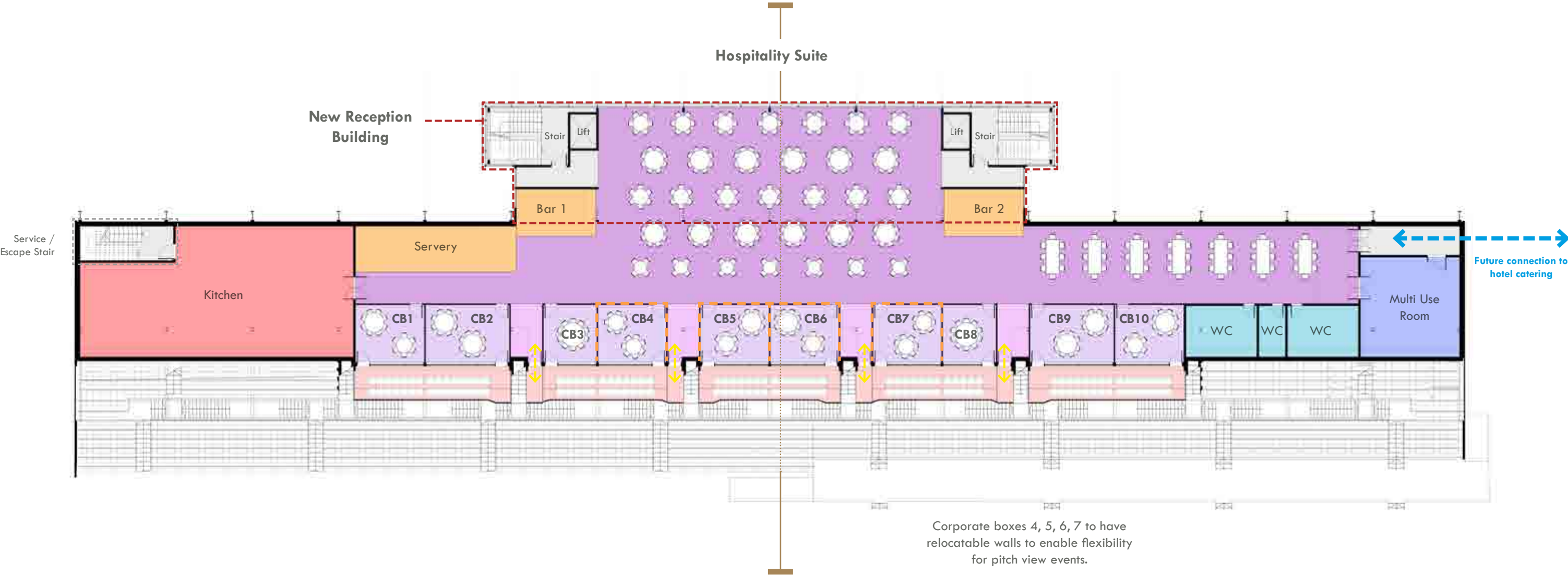


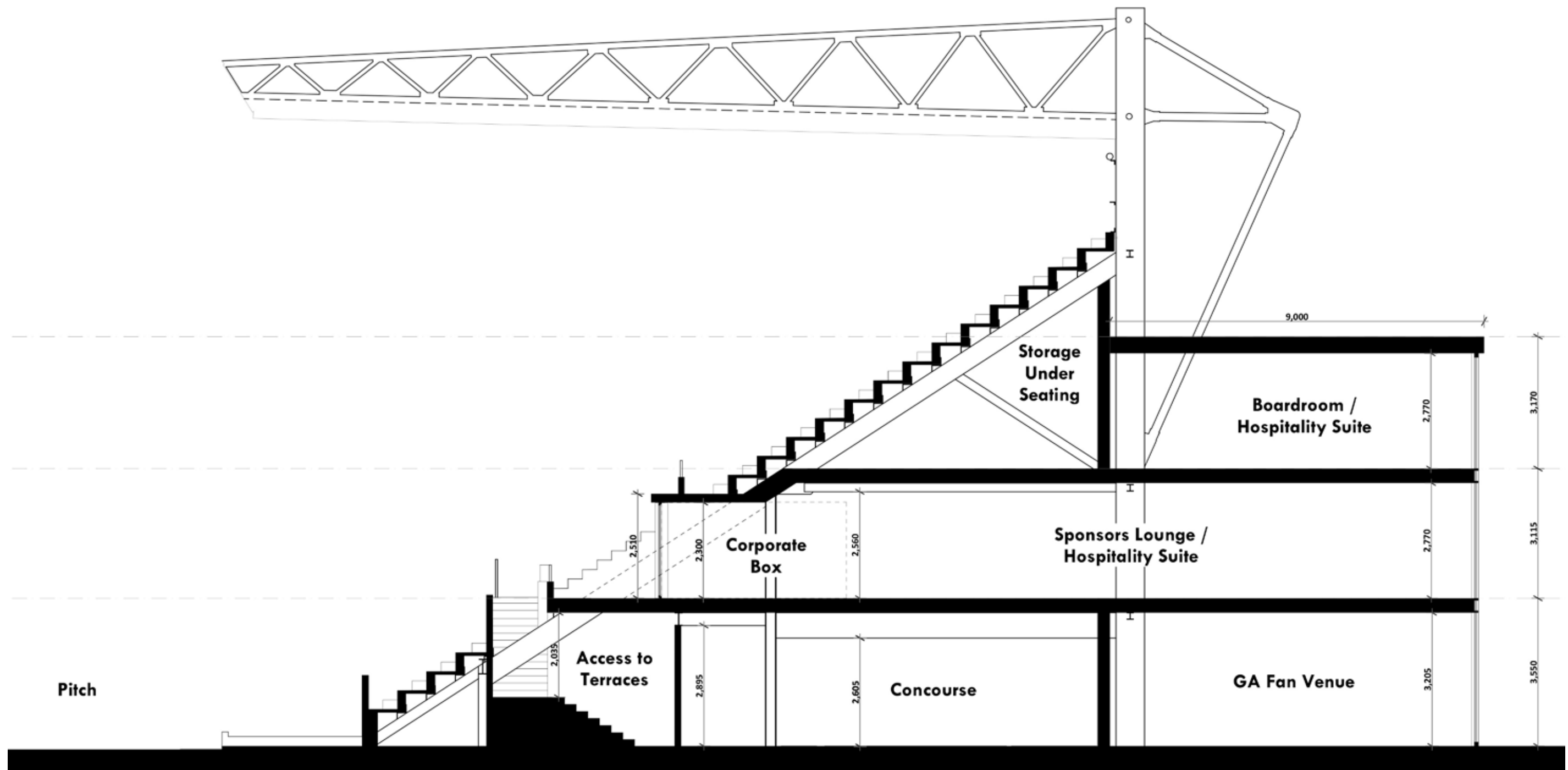
Proposed First Floor Plan



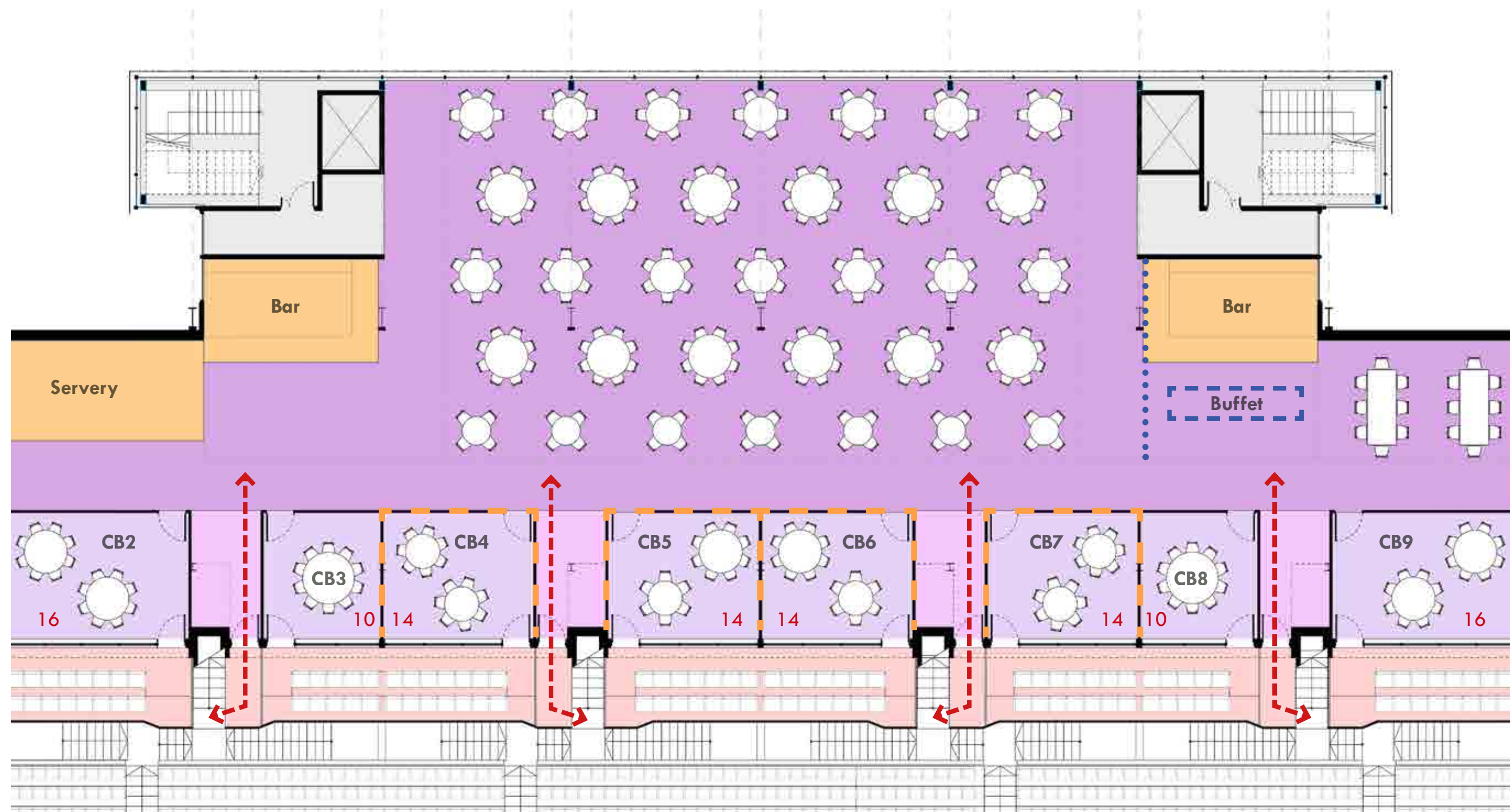
Key

- | | | | | |
|-------------------|------------------------|------------------------|----------------------------|--------------------------------|
| Corporate Boxes | Bar & Suite Facilities | Kitchen Facilities | Relocatable Walls | New Reception Building Outline |
| External Seating | Store | Bathrooms | Future Hotel Access | |
| Hospitality Suite | Circulation / Stairs | Office / Function Room | Access to DR Stand Seating | |

Proposed Section A-A - Through Corporate Box



Hospitality Suite - Illustrative Layout (Table Service)



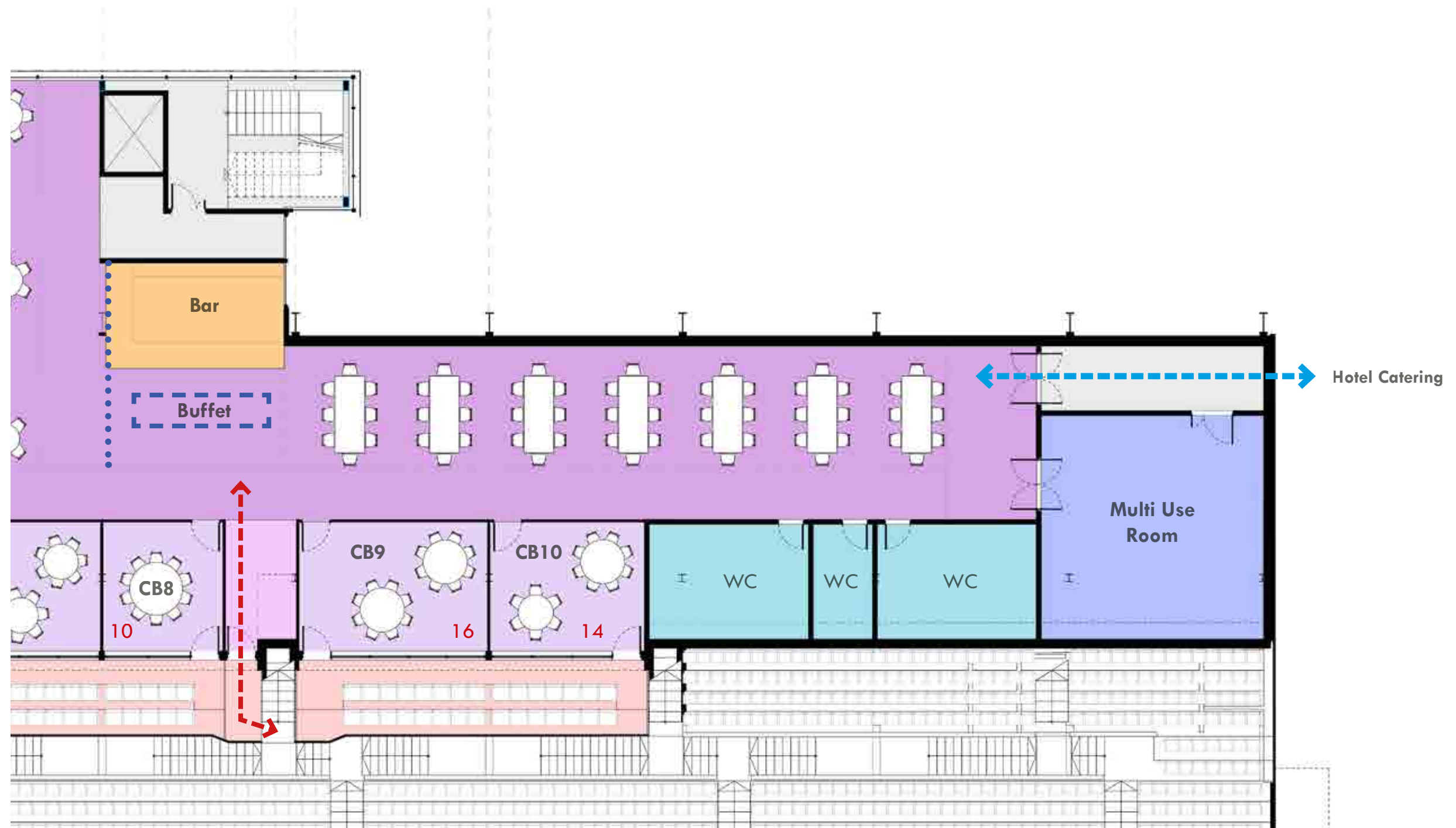
— — — CB 4, 5, 6, 7 to have relocatable walls to enable flexibility for pitch view events

Hospitality Suite - *Artistic Impression*

Concept Internal Perspective - View out towards Stadium Village



Buffet Suite - Illustrative Layout

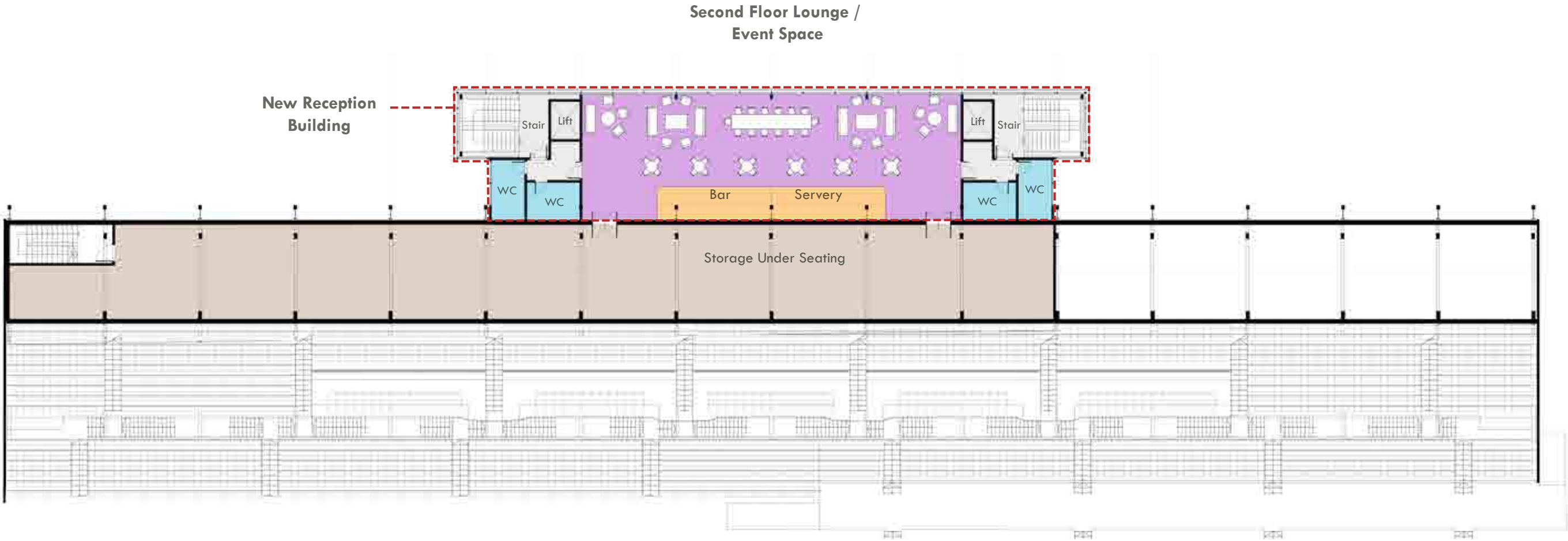


Buffet Suite - *Artistic Impression*











Concept Internal Perspective



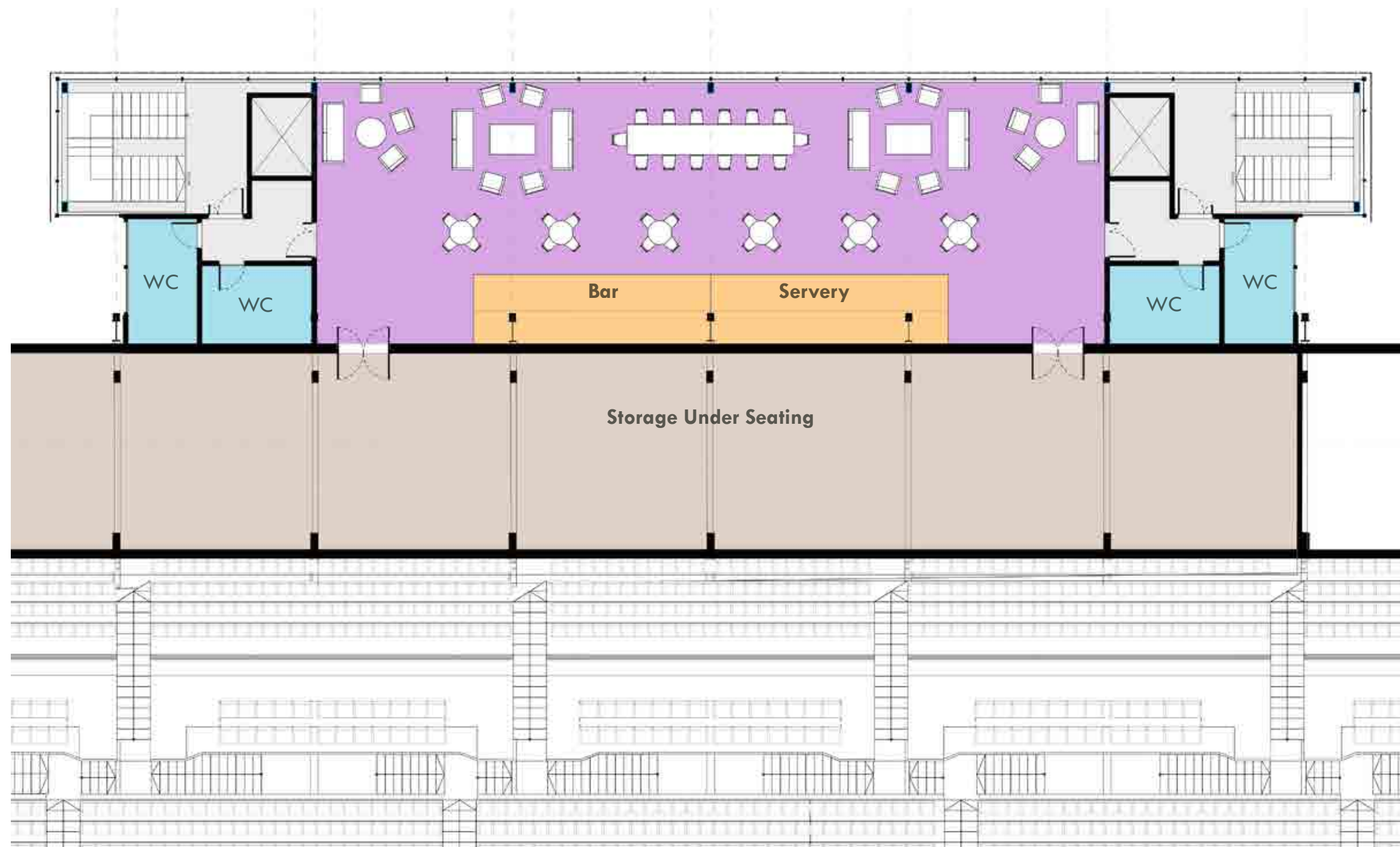
Proposed Second Floor Plan



Key

- | | | | |
|---|--|--|--|
|  Corporate Boxes |  Bar & Suite Facilities |  Kitchen Facilities |  New Reception Building Outline |
|  External Seating |  Store |  Bathrooms | |
|  Hospitality Suite |  Circulation / Stairs |  Office / Function Room | |

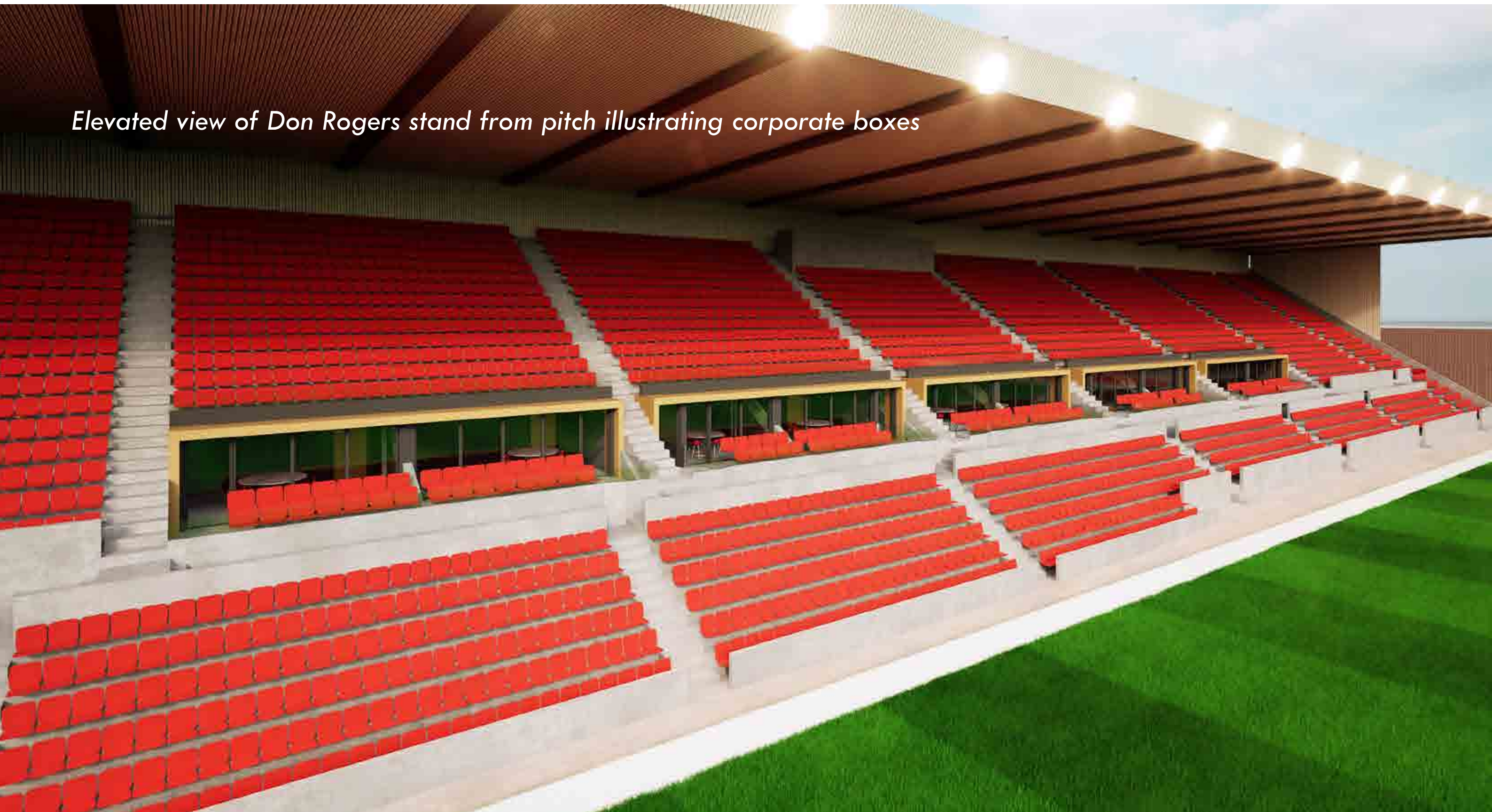
2nd Floor Lounge - Illustrative Layout



2nd Floor Lounge: *Artistic Impression*



Elevated view of Don Rogers stand from pitch illustrating corporate boxes





View of iconic Don Rogers Stand from pitch



External Concept

Externally, we propose a glazed façade with a laser cut metal cladding sun screen to the first and second floors. We will need to remove a number of the trees to make space for the Reception Building and to reveal the impressive structure of the DR Stand itself.

The laser cut pattern within the cladding is inspired by the retained tree foliage either side. From the Swindon Town FC colour palette we have selected gold as the cladding colour and this will help identify the new venue as a place of quality and competitive success.

The new façade faces south and the gold surfaces will reflect the sun in an eye catching way, significantly enhancing the currently bland blank façade in the important gateway location. At night time and when winter evening matches are scheduled the interior surfaces which are predominantly red in colour will glow through the façade acting as a warm and welcoming invitation to fans and guests. Along the top of the façade, small red feature lights which can be set to different timing patterns animate and activate the façade and as the cladding pattern reflect the trees, these light represent “Robins” in the trees.

The new Reception Building will act as a landmark for the club and help to significantly improve accessibility and connectivity with the fans and the local community. By replacing the blank featureless facade with a permeable glazed frontage we will invite neighbours into the heart of the club both on match days and just as importantly on non match days.

The Reception Building stand as phase 1 of our ambitious masterplan for the whole stadium and sets a benchmark for the quality and design direction of the redevelopment of the Nigel Eady County Ground as we take the club into a new era as a premier residential sport and leisure destination.





View of Don Rogers Stand Reception Building from Shrivenham Road



Proposed entrance to Reception Building

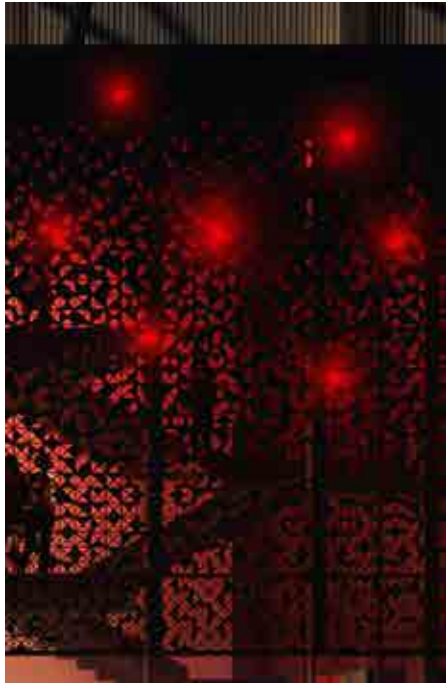


Cladding Design

Robins in the Trees



Cladding Pattern



Precedents





Day time view of Reception Building





Night time view of Reception Building





ANDERSON
PRESCOTT