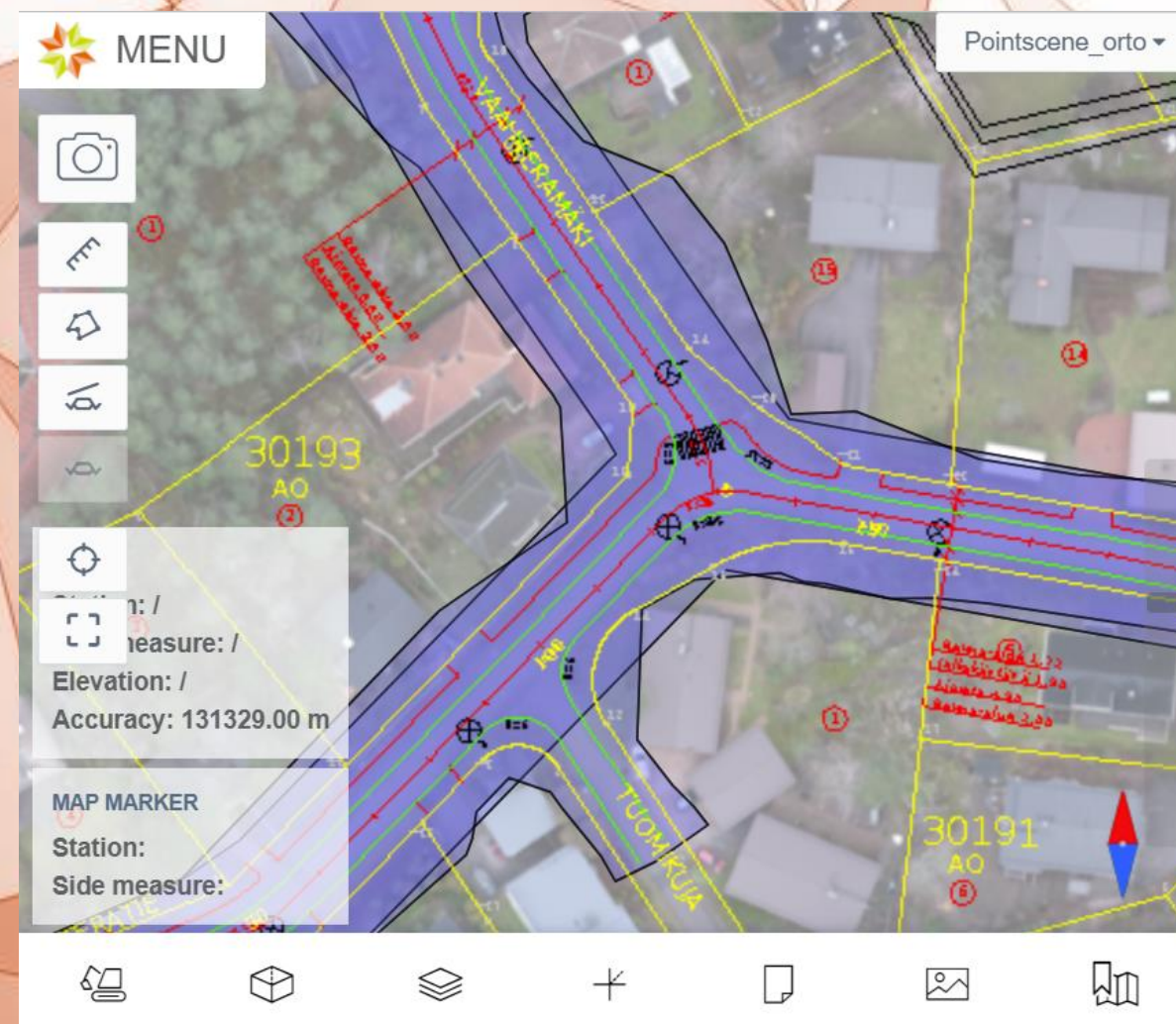


Infrakit

Mobile browser



Infrakit
Your digital transformation partner



Infrakit Mobile page

1. Infrakit Mobile page
2. Photography
3. Equipment
4. Models
5. Drawings
6. Facts
7. You documented
8. Photographs
9. Saved views



Infrakit
Your digital transformation partner

Infrakit Mobile page

app.infrakit.com/kuura/mobile2.htm

Log in with the same credentials as in Office

On the left side you will find

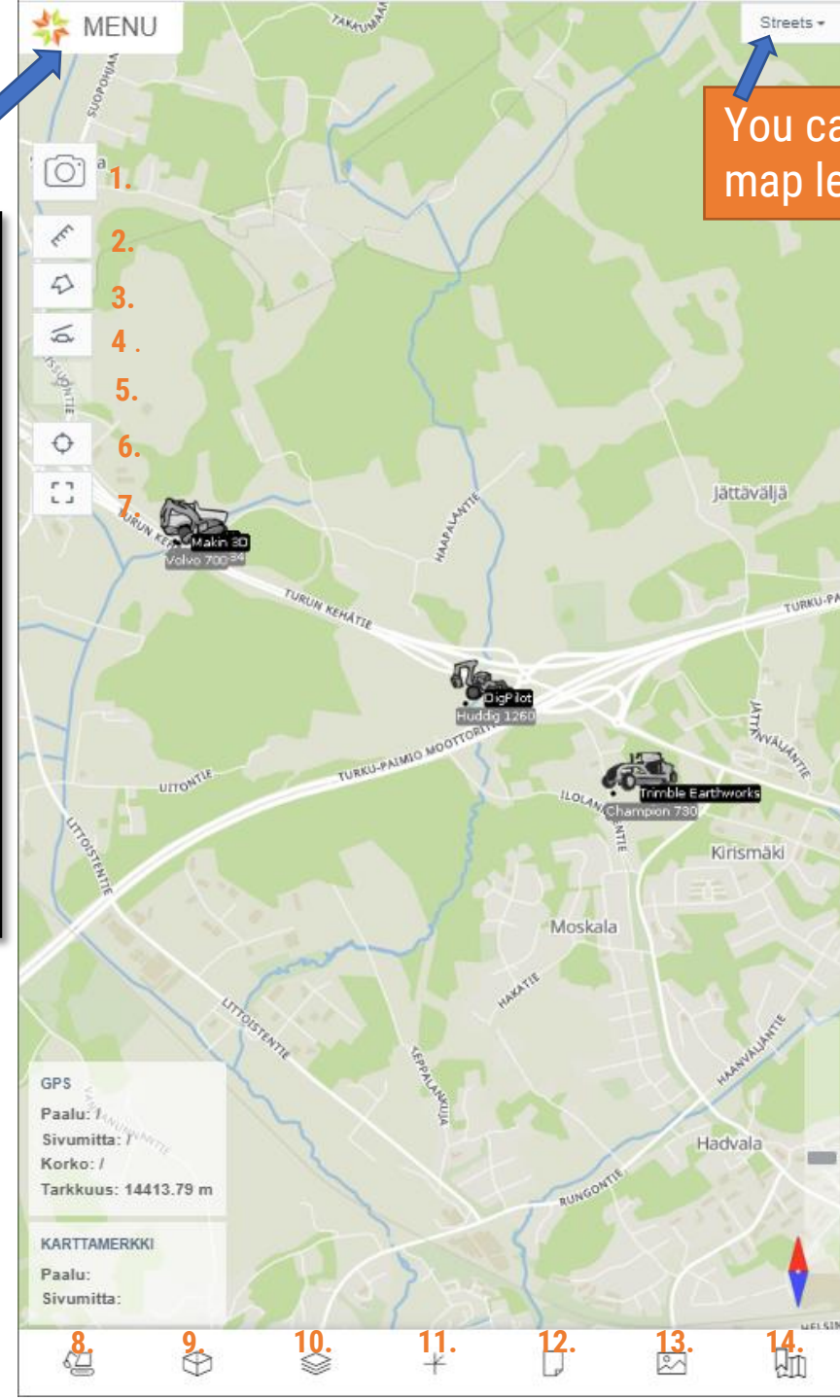
1. Photography
2. Distance measurement tool
3. Area measurement tool
4. Cross section tool
5. Cross-section with respect to the alignment
6. Locate the user
7. Zoom all

From the bottom

8. Equipment
9. Models
10. Drawings
11. As-built
12. Documents
13. Photos
14. Saved views

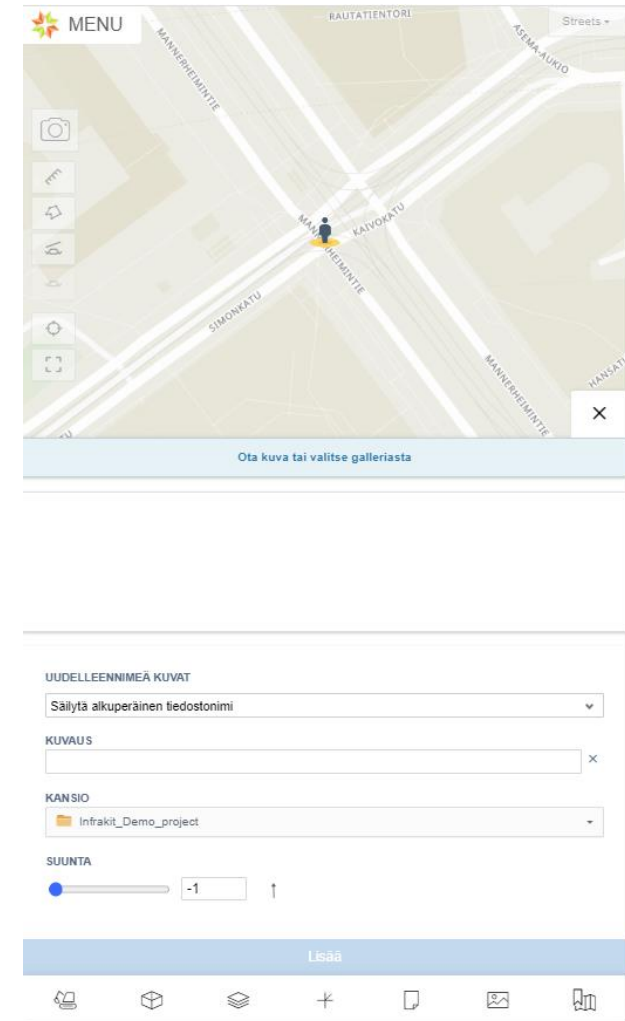
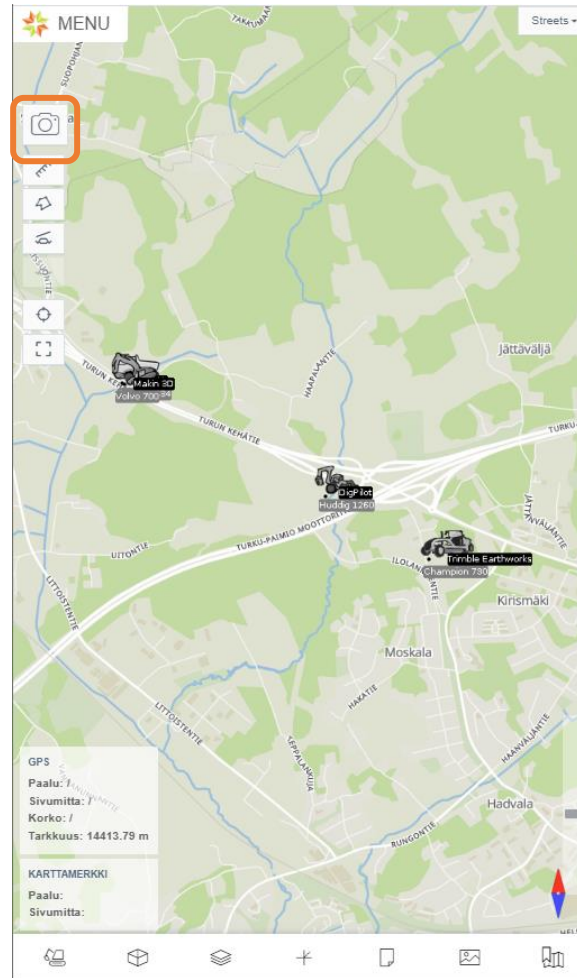
Project change under the Menu button

You can change the map level here



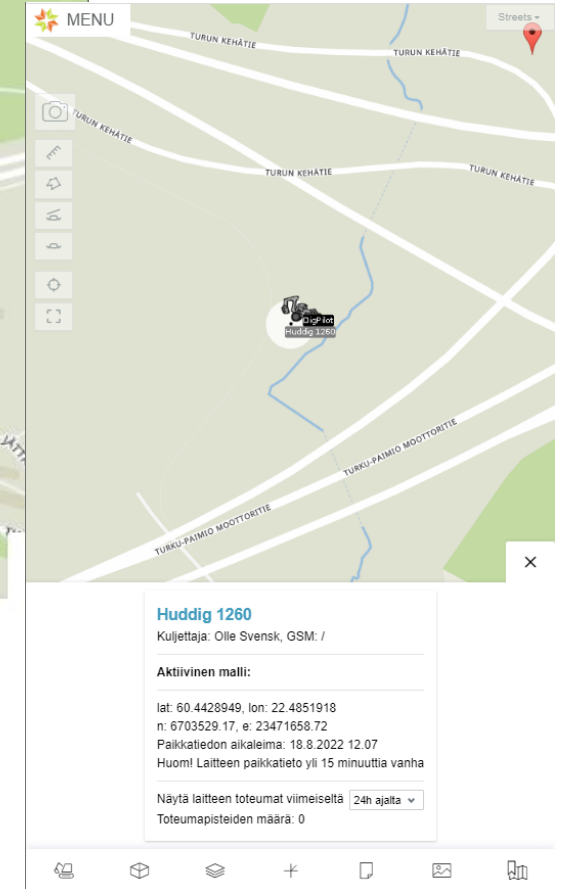
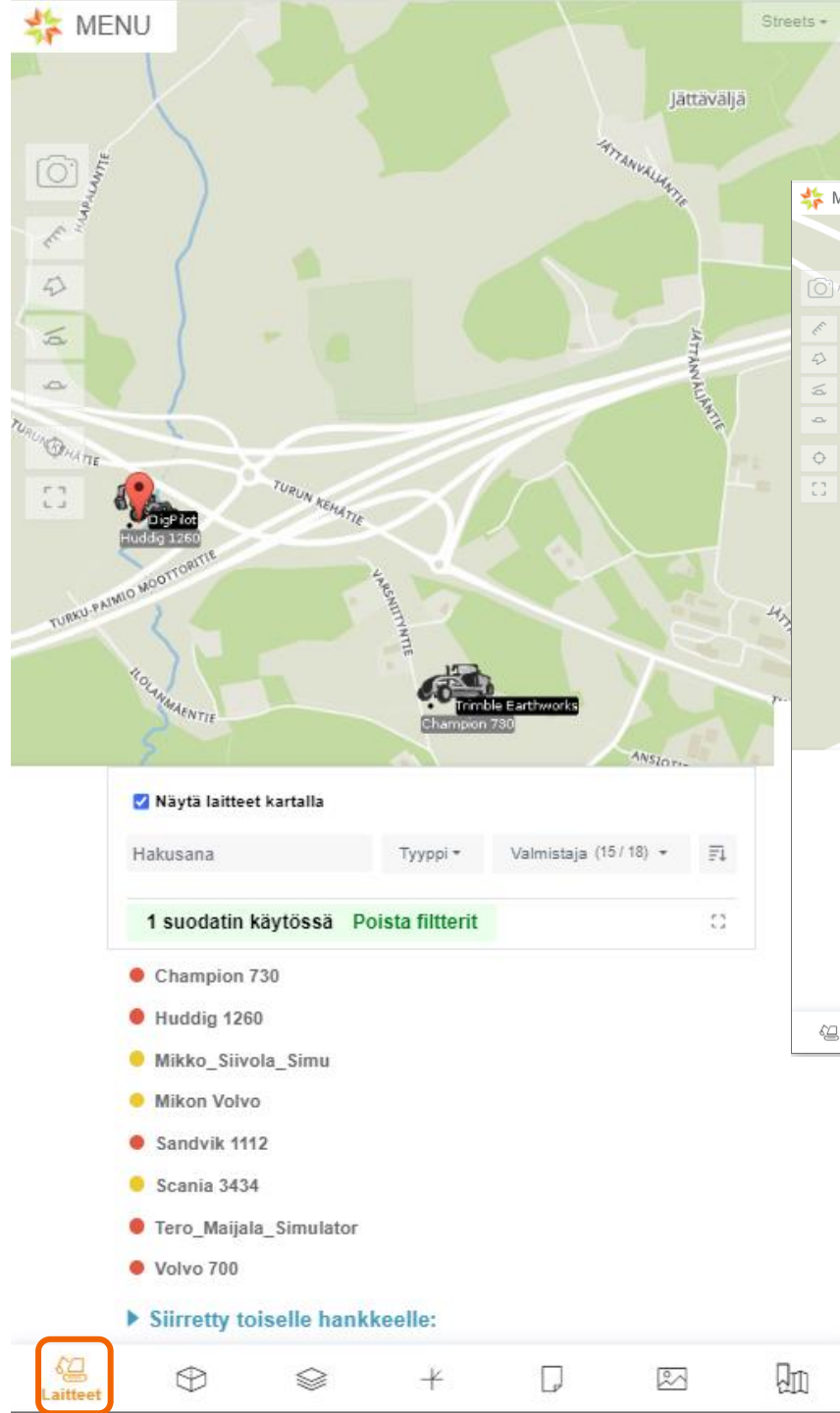
Photos

1. Click camera icon on the main screen
2. From the menu select
3. The app opens the camera
4. Point to the object to be photographed and save the image
5. Rename images - with this feature you can name the image with a alignment and station
6. You can give the photo a description
7. And direction
8. The Add button saves the image



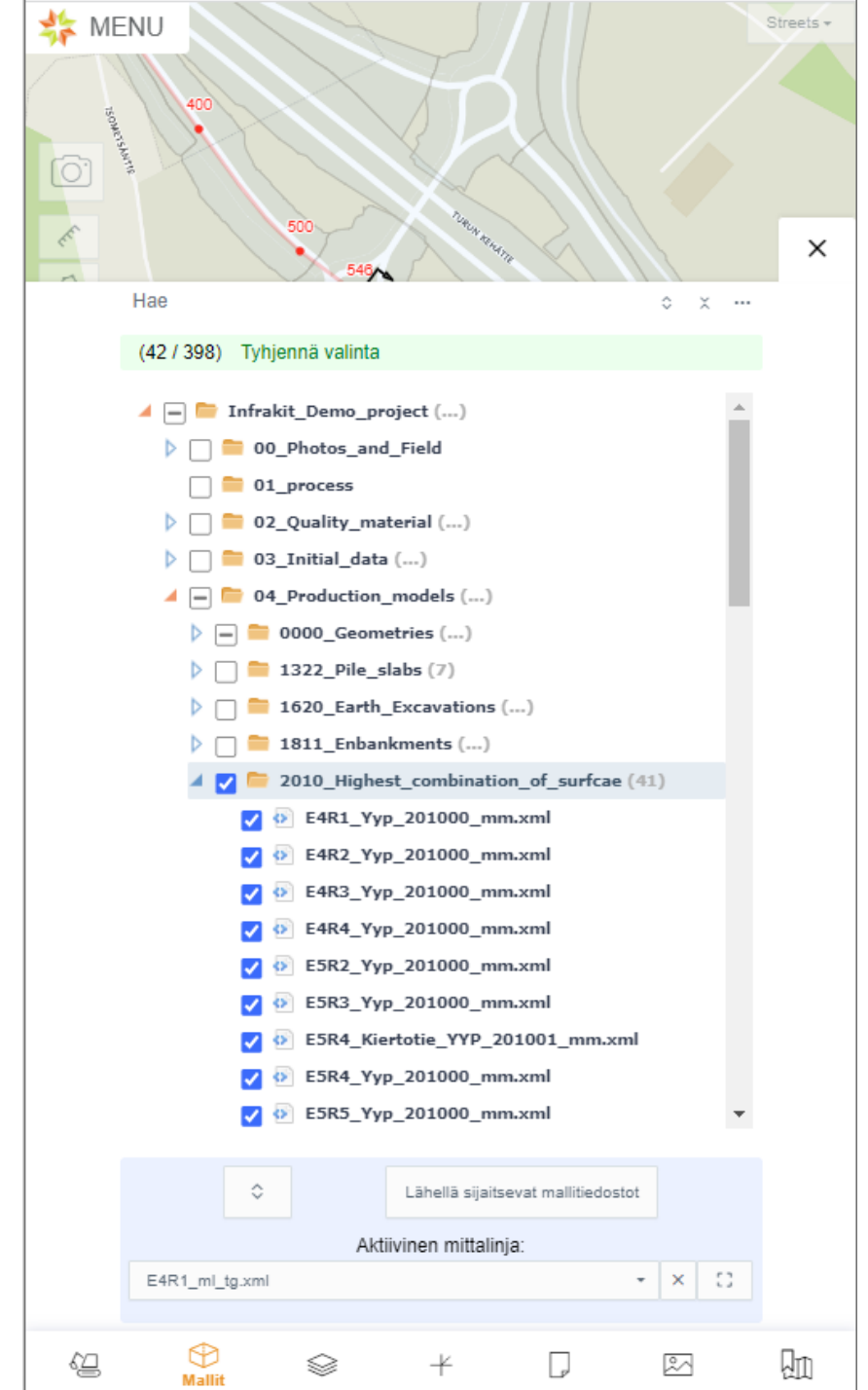
Equipment

- In the Equipment menu, you can see the devices in this project
- By tapping on the name of the device from the list, the view will focus on the device
- By tapping on the machine icon on the map, you can see the machine information



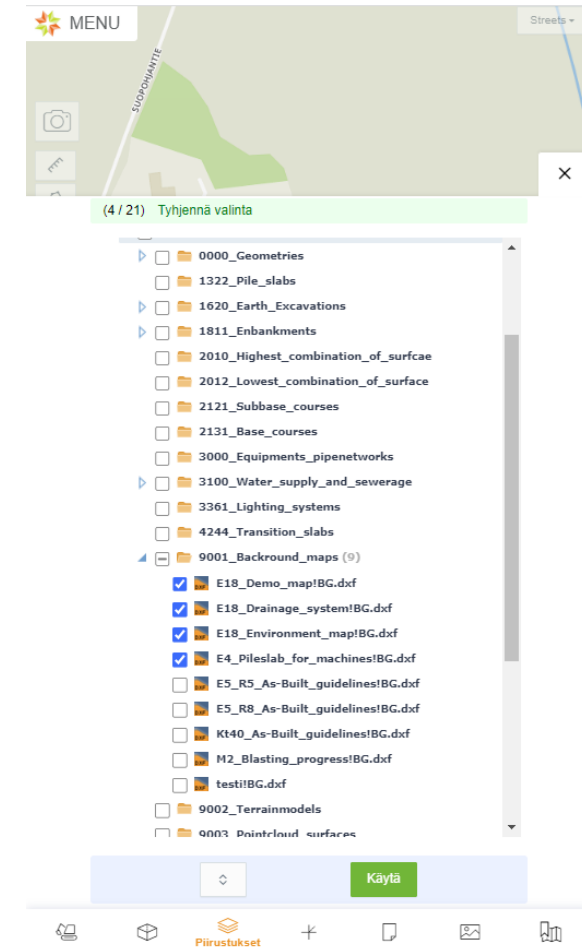
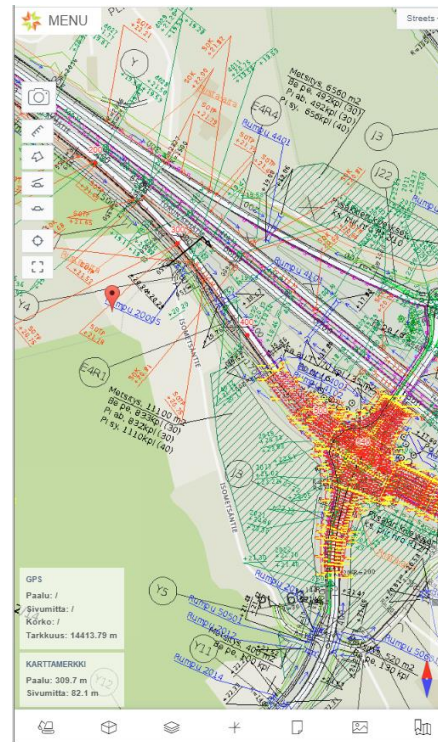
Models

- From the Models menu, you can choose which model is draw on the map view
- The folder structure of the project opens from the menu, which shows the folders that contain model data
- The desired model is activated to appear on the map by checking the box
 - You can also choose several models
- You can also select an active alignment from the menu



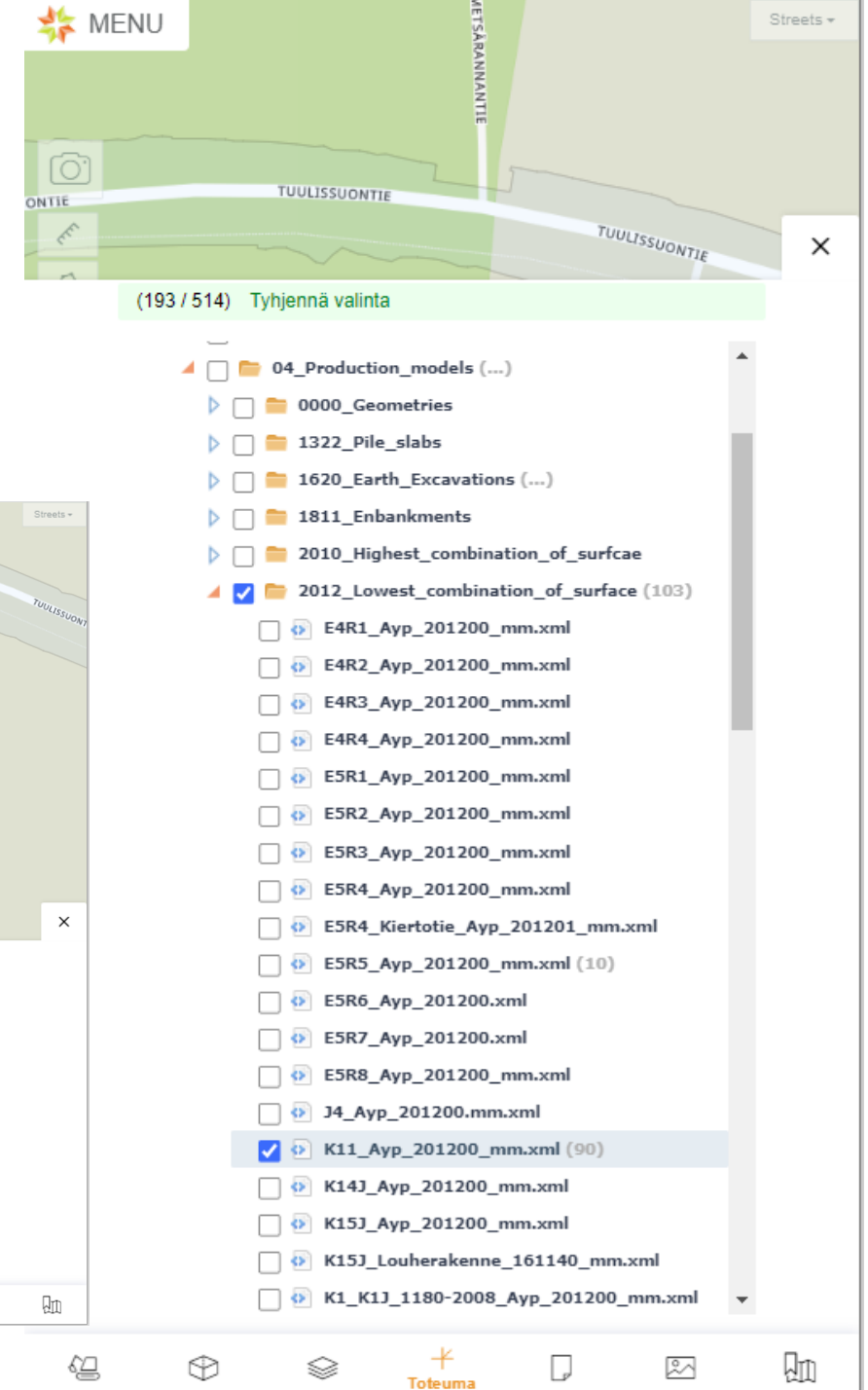
Drawings

- From the menu, you can select the drawing to be drawn on the map
- Select the drawings you want by placing a check mark in the box and select **Apply**
- Infrakit views selected drawings on the map



As-built

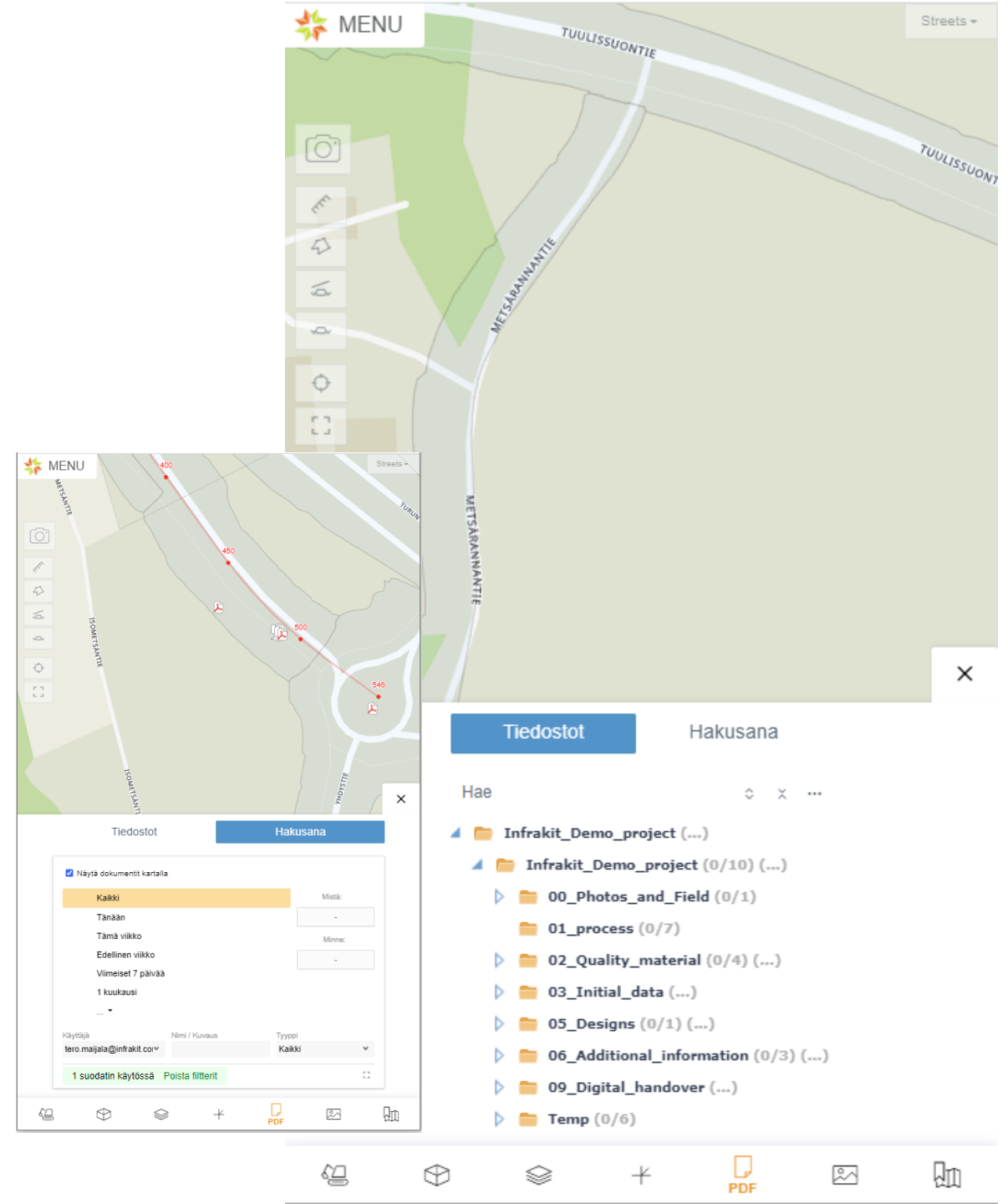
- From the menu, you can select the as-built points to be drawn on the map view
- Select the desired folder or file that contains as-builts by putting a check mark in the box
- Selected as-builts are drawn on the map
- By clicking on the point, you can see the point information



Documents

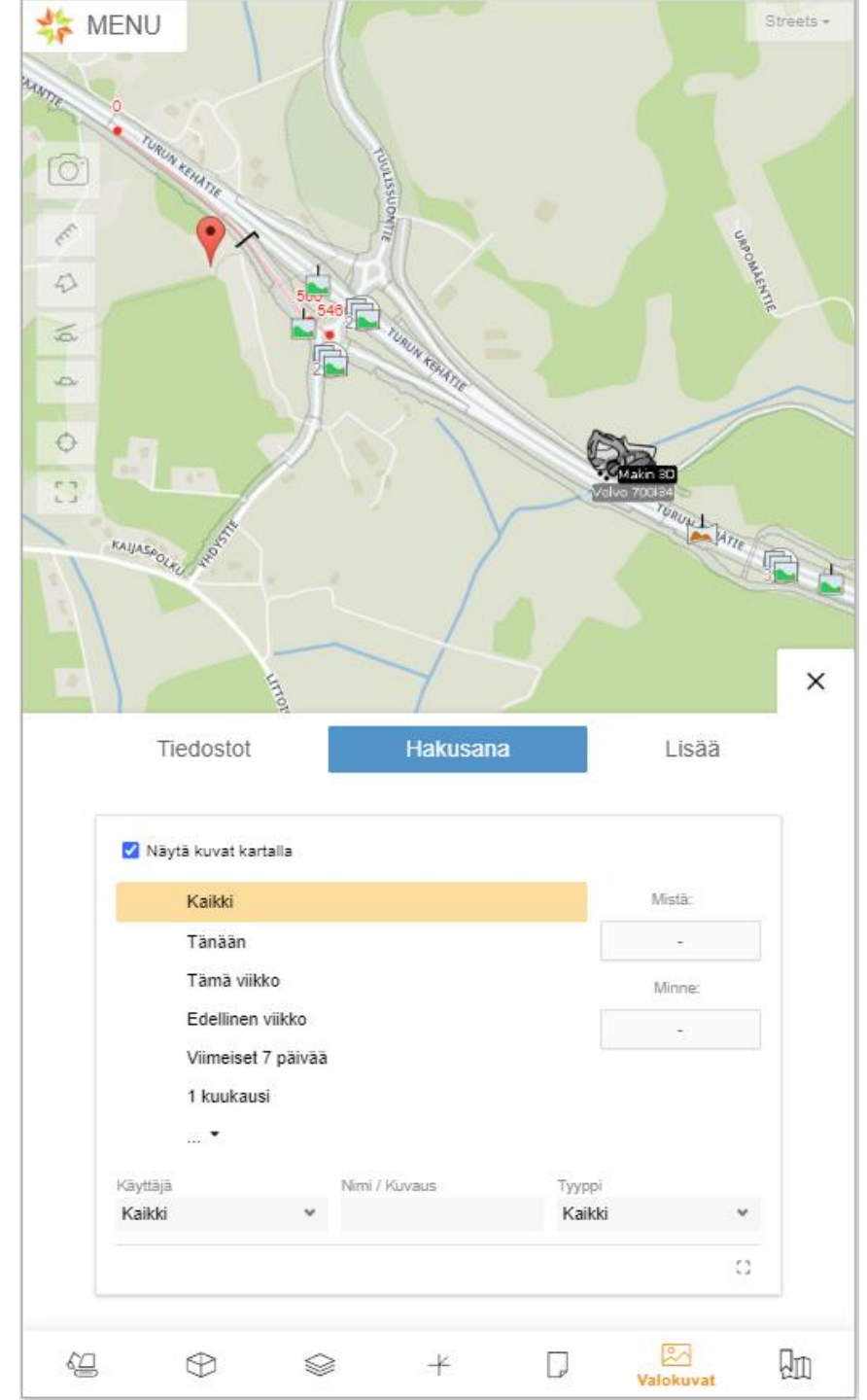
- From the menu, you can open the documents you want and show documents with a location on the map
 - From the Files tab, you can select documents from Infrakit's folder structure
 - You can search and filter documents from the search tab
- In this menu, you also have the option to turn the drawing of documents on/off from the map

You can also open a document placed on the map by clicking on its icon on the map



Photos

- From the menu, you can view the images saved for the project
- From the Files tab, you can open photos in the folder structure
- On the Search tab, you can search and filter photos by, for example, time or user
- You can also open a photo from the map by tapping on its icon



Saved views

- With the function, you can open saved views already made with Infrakit Office
- The saved view contains a pre-built viewing package. It can include, for example, models, drawings or as-built points and photos or any combination of these
- Saved view opens all materials defined for the ready-made view
- Can open a view of the folder structure of the project
- The view opens by tapping the preview icon
- The view can also attach linked documents or drawings on the map
- You can comment and draw the view by selecting Send comment / Draw

