

 **Arcluce**  
Light in life



NEWS

light+building 2024



# INDEX



**PANDA**

Page 4



**MIKO** [Range]  
Façade / Bollard / Floodlight

From page 16



**KLOU76**

Page 6



**PIXOL** [Range]  
Ceiling / Façade / Bollard / Floodlight

From page 24



**KLOU150**

Page 8



**LECTRA VIZOR**  
Office floor lamps

Page 36



**KLOU180**

Page 10



**VIZOR**  
Pendant luminaires

Page 38



**LAPIS**

Page 12



**LECTRA RIGO**  
Office floor lamps

Page 40



**KLOU-IK180**

Page 14



**RIGO51**  
Pendant luminaires

Page 42



**CONO | CONO** Catenary  
Urban lighting

(Index cover)



PANDA270  
Half Rim

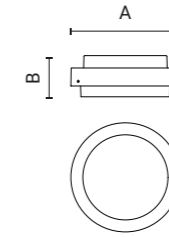
## PANDA

*The classic that surprises.*

Perfect combination of classic lines and modern technologies, PANDA is made with highly recyclables and fine finishes.

The painted structure, made of die-cast aluminum, and the refined screen, with an exclusive ice effect, illuminate indoor and outdoor areas with a pleasant and comfortable light thanks to the ultra-diffusive optics.

Designed to achieve maximum energy efficiency is also available with sensors and state-of-the-art technologies for total control of light.

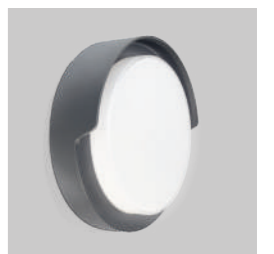


DIMENSIONS	A	B	C
PANDA 210	84	212	
PANDA 270	84	272	

LIGHTING DATA	
Power	up to 15 W
Lumen	up to 1125 lm
Efficacy	up to 75 lm/W
Colors	○ 11 (-11), ● 16 (-16), ● 12 (-12)



PANDA270 - Flat Rim



PANDA270 - Half Rim



PANDA270 - Full Rim



**KLOU76**

*The KLOU Series becomes also a residential bollard.*

Among the most popular products of Arcluce's production is the KLOU180, recently renewed with new optics and optimized for photometric performance and energy consumption.

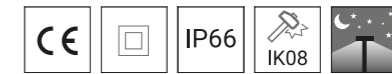
Today the photometric, design and robustness features, so appreciated by designers, are also available in a new residential version (with reduced dimensions to 76mm).

**KLOU76** joins the upgraded **KLOU180** (180mm) and the new **KLOU150** (150mm) with a specific color range for residential installations.



DIMENSIONS	A	B	C
Classic	76	500	
	76	800	

LIGHTING DATA	
Power	up to 8 W
Lumen	up to 600 lm
Efficacy	up to 75 lm/W
Colors	● 16 (-16), ● 23 (-23), ● 15 (-15)



Available in Grey colour (-16).



Available in Corten colour (-23).



Available in Milano Green colour (-15).



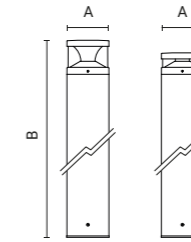
**KLOU150**

*The KLOU Series expands with a new compact size.*

With the availability of the new 150mm version, the **KLOU Series** becomes the most versatile of the Arcluce bollard range.

The wide variety of optics, wattages, color temperatures and heights allow the KLOU Series to meet the many needs of lighting design and urban fixtures with coordinated products.

**KLOU150** joins the popular **KLOU180** (180mm) and the brand new, residential **KLOU76** (76mm).



DIMENSIONS	A	B	C
Classic/Comfort	150	500	
	150	800	
Short	150	455	
	150	755	

LIGHTING DATA	
Power	up to 15 W
Lumen	up to 1500 lm
Efficacy	up to 100 lm/W
Colors	● 16 (-16), ● 21 (-21)





**KLOU180**

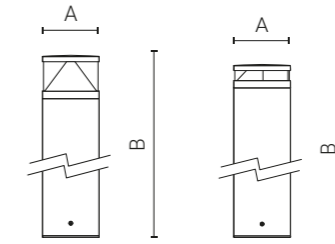
*The most complete and versatile bollard from Arcluce.*

Outdoor lighting bollard with an eye-catching design.

**KLOU180** represents a versatile and stylish solution for both public and residential lighting.

With a wide variety of optics, heights and finishes, it embellishes environments with diffused light, with high visual comfort, free from glare and light pollution.

The high degree of resistance (**IK10**), makes it suitable for installations in public parks and residential neighborhoods.



DIMENSIONS	A	B	C
Classic/Comfort	180	250	
	180	460	
	180	960	
Short	180	190	
	180	400	
	180	900	

LIGHTING DATA	
Power	up to 19 W
Lumen	up to 2250 lm
Efficacy	up to 118 lm/W
Colors	● 16 (-16), ● 21 (-21)





## LAPIS

*A new design  
for a better residential  
urban lighting.*

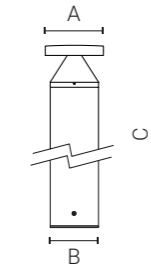
The simplicity of shapes as the outcome and synthesis of the research.

This is how **LAPIS** was born: the new Arcluce bollard with minimal and refined aesthetics.

Optimized optics generate a pleasant and wide light beam, which does not light pollution.

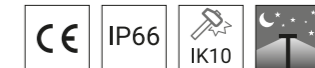
When **LAPIS** is turned on, it creates an exclusive material finish on the body under the lens, enhancing its design and making it unique in its kind.

**LAPIS** is available in various heights, configurations and modern light control systems.



DIMENSIONS	A	B	C
LAPIS	180	150	510
	180	150	810

LIGHTING DATA	
Power	up to 20 W
Lumen	up to 1700 lm
Efficacy	up to 85 lm/W
Colors	● 16 (-16), ● 21 (-21)





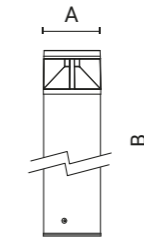
**KLOU-IK180**

*Renovate design for the most resistant Arcluce bollard.*

**KLOU-IK180**, as all the valued products appreciated and valued by planners and designers, is subject of small but substantial aesthetic and design renovations.

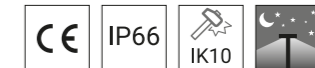
Design has become smoother, more linear, modern, and lighter; optics also evolve with greater lighting efficiency and lower consumptions.

Another redesign with a focus on sustainability: improving performance and reducing the use of raw materials to minimize the impact on the planet.



DIMENSIONS	A	B	C
KLOU-IK180	182	260	
	182	470	
	182	970	

LIGHTING DATA	
Power	up to 25 W
Lumen	up to 1400 lm
Efficacy	up to 56 lm/W
Colors	● 21 (-21), ● 16 (-16)







## MIKO [Range]

### The coordinated Range for every lighting project

MIKO Range comprises three types of products that allow to design aesthetically coordinated projects with high visual comfort.

High resistant and performing materials are used to assure durability and quality of the series.

### Applications

#### Façade

Both for indoor and outdoor lighting, MIKO Façade has an high protection degree (IP66).



#### Bollard

Elegant design to add a stylish touch to residential and urban environments.



#### Urban

MIKO Grande is the future-proof post-top luminaire which does not produce lighting pollution.





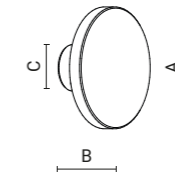
## MIKO Wall

*Simple and impactful at the same time.*

Facade lighting achieves maximum elegance and light quality in this elegant wall-mounted luminaire.

The simplicity of a point from which light radiates, impalpable and diffused, highlighting the volumes and materials of the most sophisticated architectures.

Available in different colors to better satisfy projects requirements, this wall-mounted, die-cast aluminium luminaire emanates a soft light that enhances volumes and materials of indoor and outdoor spaces.



DIMENSIONS	A	B	C
MIKO Wall	200	100	76

LIGHTING DATA	
Power	up to 10 W
Lumen	up to 875 lm
Efficacy	up to 87 lm/W
Colors	○ 11 (-11), ● 21 (-21), ● 12 (-11), ● 23 (-23)



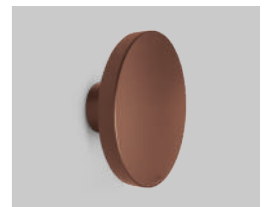
Available in White colour (-11).



Available in Aluminium colour (-21).



Available in Black colour (-12).



Available in Corten colour (-23).



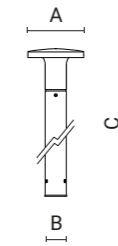
**MIKO** Bollard

*A touch of elegance for every lighting project.*

The sophisticated bollard light for outdoor private and public lighting.

MIKO bollard enhances environments with its refined design and the diffused, homogeneous lighting, without glare or light pollution.

Available in different heights, color temperatures, with one way or radial optic, this bollard harmoniously illuminates private or public gardens, pathways, pedestrian areas and parks.



DIMENSIONS	A	B	C
MIKO Bollard	200	76	300
	200	76	600
	200	76	800
	200	76	1000

LIGHTING DATA	
Power	up to 20 W
Lumen	up to 1700 lm
Efficacy	up to 85 lm/W
Colors	● 21 (-21), ● 16 (-16), ● 23 (-23), ● 15 (-15)



Available in Grey colour (-16).



Available in Corten colour (-23).



Available in Milano Green colour (-15).



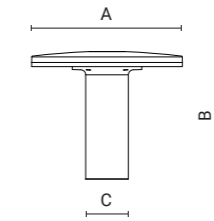
Urban lighting

**MIKO Grande**

*Essential and functional design for urban lighting.*

Clean and functional lines, high performance optics, provided with the latest technologies for smart lighting and energy efficiency: **MIKO Grande** is the pole top luminaire for urban lighting which combines elegance and innovation with the highest quality of light, without producing light pollution.

Lighting is playing a central role in building and shaping smart cities. **MIKO Grande** is equipped with connection interfaces and it can be installed on wall by means of pole heads, or on single/double pole attachments.



DIMENSIONS	A	B	C
MIKO Grande	360	305	102

LIGHTING DATA	
Power	up to 48 W
Lumen	up to 5900 lm
Efficacy	up to 122 lm/W
Colors	● 21 (-21), ● 12 (-12), ● 16 (-16)



Connecting and finishing ring for Ø60mm and Ø76mm pole.





## PIXOL [Range]

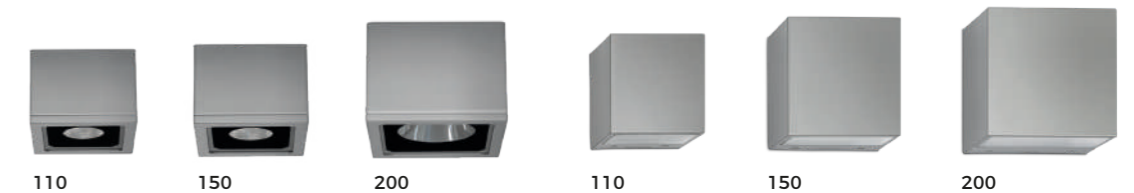
From the simplicity of the shapes PIXOL was born

**PIXOL** is the range of indoor and outdoor luminaires. Its coordinated design has been precisely conceived for functional and scenographic architectural lighting projects.

The range was inspired by the simplicity of the shapes of cubes and parallelepipeds. The distinctive features that characterize **PIXOL** products are essentiality and minimalism of the lines, combined with the careful design of the optics and the high technical standards.

The philosophy behind the concept of this range by **Arcluce** is to skilfully combine quality materials in order to shape an harmonious series of high performing products.

### Applications



#### Ceiling

Available in three sizes, the ceiling-mounted version fits into both indoor and outdoor architectural contexts.

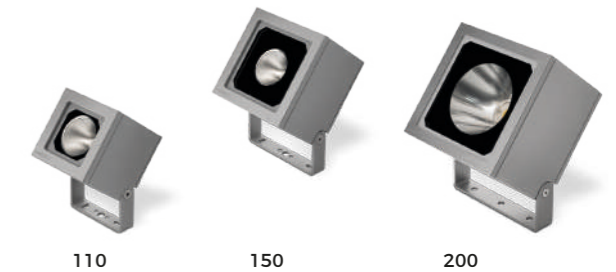
#### Façade

In the sign of modularity, the wall-mounted version is also available in three different sizes. As true decorative elements, they enhance façade details and volumes.



#### Bollard

Bollard stylishly illuminate private and public outdoor spaces. Available in two versions with mono and bi-directional optics, they fulfil a dual function: low energy consumption and use of environmentally sustainable materials, such as wood.



#### Floodlight

Also available in three sizes, outdoor floodlights complete the Range. Robust and powerful, they can be wall-mounted, stake-mounted or stake or pole-mounted using the practical and functional **Arcluce** Grapes connection.



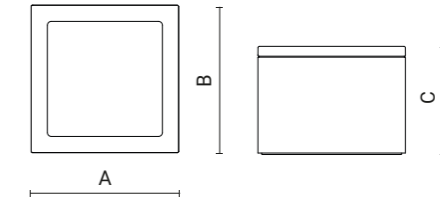
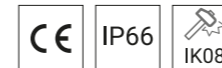
Ceiling fittings

## PIXOL Ceiling

*It is light that shapes spaces*

**PIXOL Ceiling** is the ceiling-mounted luminaire for both indoor and outdoor lighting, featuring a modern and compact design. This luminaire was specifically created to fit architectures requiring a powerful but discreet illumination.

Functional furnishing element that allows to open up a dialogue between the lighting of indoor and outdoor spaces such as arcades, hotels, exhibition routes and retail.



DIMENSIONS	A	B	C
PIXOL110	110	110	110
PIXOL150	150	150	110
PIXOL200	200	200	150

LIGHTING DATA	
PIXOL110	
Power	up to 14 W
Lumen	up to 1650 lm
Efficacy	up to 117 lm/W
PIXOL150	
Power	up to 31 W
Lumen	up to 3100 lm
Efficacy	up to 100 lm/W
PIXOL200	
Power	up to 69 W
Lumen	up to 8000 lm
Efficacy	up to 115 lm/W
Colors	● 21 (-21), ○ 11 (-11), ● 16 (-16), ● 23 (-23)



Available in Corten colour (-23).



Available in Corten colour (-23).



Available in Corten colour (-23).

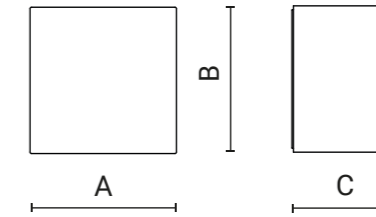
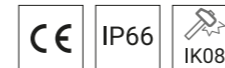


Façade fittings

## PIXOL Façade

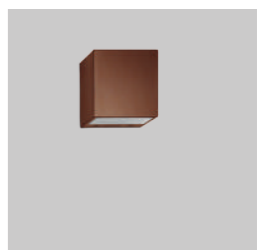
*Decorative accent lighting to historic and modern buildings.*

Designed to enhance architectural structures through accent lighting, **PIXOL Façade** is the powerful and versatile luminaire for facade lighting. With a choice of mono and bidirectional optics, it allows various combinations of beams offering multiple ways to emphasize architectural details or to define the volumes of the facades.



DIMENSIONS	A	B	C
PIXOL110	110	110	100
PIXOL150	150	150	100
PIXOL200	200	200	140

LIGHTING DATA	
PIXOL110	
Power	up to 14 W
Lumen	up to 1600 lm
Efficacy	up to 114 lm/W
PIXOL150	
Power	up to 31 W
Lumen	up to 3200 lm
Efficacy	up to 103 lm/W
PIXOL200	
Power	up to 68 W
Lumen	up to 6600 lm
Efficacy	up to 97 lm/W
Colors	● 21 (-21), ○ 11 (-11), ● 16 (-16), ● 23 (-23)



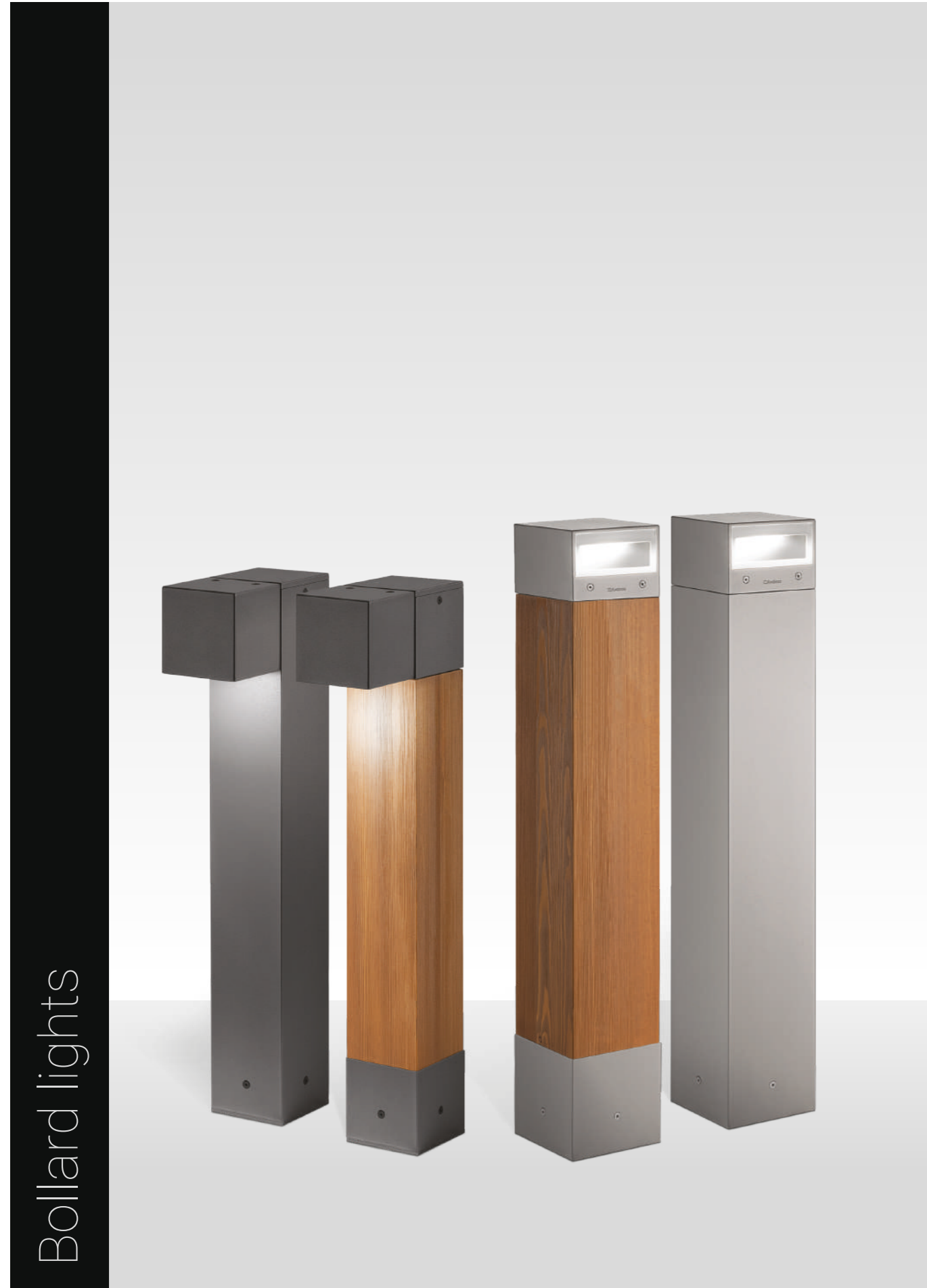
Available in Corten colour (-23).



Available in Corten colour (-23).



Available in Corten colour (-23).

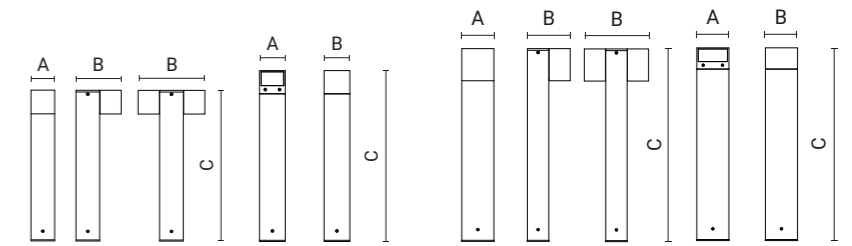
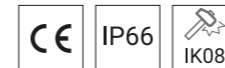


**PIXOL** Bollards

*Linear and clean design for both private and public outdoor lighting.*

This bollard combines linear elements and geometric shapes in a clean and compact design, with high performance LED sources, designed to guarantee lighting with maximum visual comfort.

A meeting point between functionality, sustainability and aesthetics, adding a touch of style to any residential and urban context, such as gardens, parks and pathways.

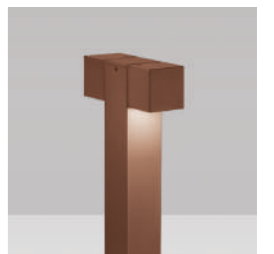


DIMENSIONS	A	B	C
PIXOL110 Single appl.	110	210	700
PIXOL110 Double appl.	110	310	700
PIXOL110 Top	110	110	730
PIXOL150 Single appl.	150	200	900
PIXOL150 Double appl.	150	300	900
PIXOL150 Top	150	150	900

LIGHTING DATA	
PIXOL110	
Power	up to 20 W
Lumen	up to 1180 lm
Efficacy	up to 59 lm/W
PIXOL150	
Power	up to 20 W
Lumen	up to 1240 lm
Efficacy	up to 62 lm/W
Colors	● 21 (-21), ○ 11 (-11), ● 16 (-16), ● 23 (-23)



Available in Corten colour (-23).



Available in Corten colour (-23).

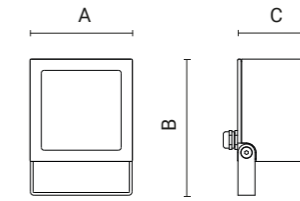


Available in Corten colour (-23).



**PIXOL Floodlights**

*The minimalist designed floodlight with a wide choice of optics.*



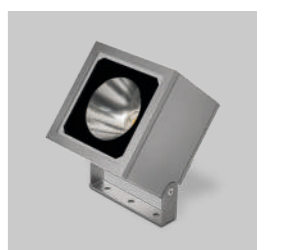
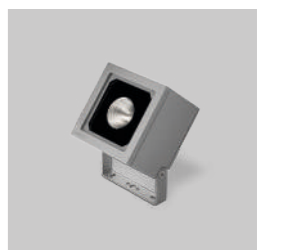
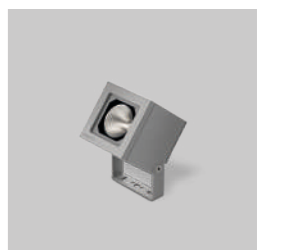
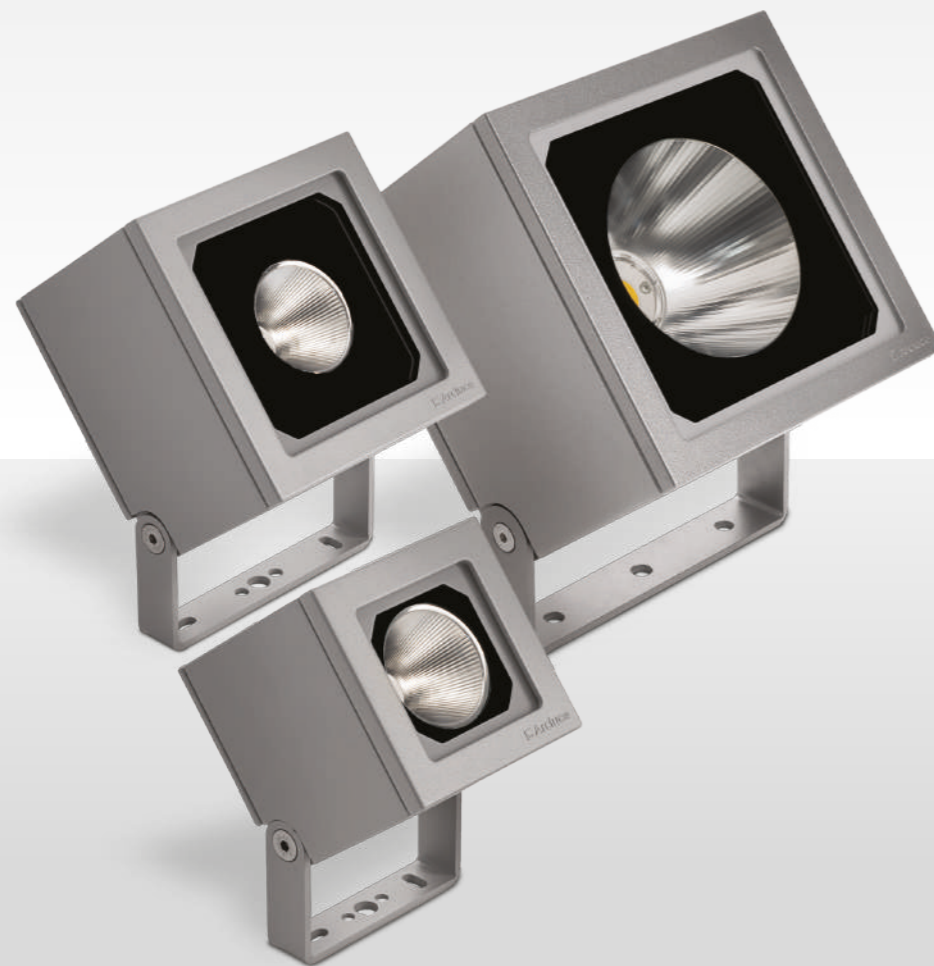
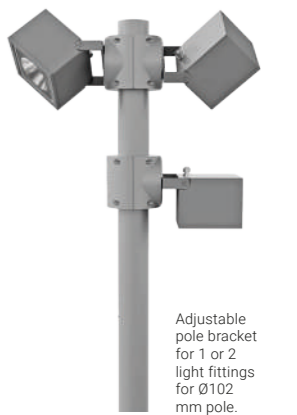
Minimal design and geometric shape maximize the potential of the LED and make **PIXOL floodlights** suitable for multiple uses and architectural contexts.

**PIXOL floodlights** range offers a wide choice of optics - from narrow to very wide flood, to adapt to the different needs of the lighting project.

Suitable for architectural lighting applications of buildings, exteriors of shopping centers, exhibition areas.

DIMENSIONS	A	B	C
PIXOL110	110	160	115
PIXOL150	150	200	115
PIXOL200	200	250	160

LIGHTING DATA	
PIXOL110	
Power	up to 14 W
Lumen	up to 1600 lm
Efficacy	up to 114 lm/W
PIXOL150	
Power	up to 31 W
Lumen	up to 3100 lm
Efficacy	up to 100 lm/W
PIXOL200	
Power	up to 69 W
Lumen	up to 8000 lm
Efficacy	up to 115 lm/W
Colors	● 21 (-21), ● 16 (-16), ● 23 (-23)



LECTRA VIZOR & LECTRA RIGO





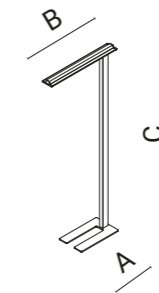
Office floor lamps

## LECTRA VIZOR

*Professional lighting designed for the new smart office trends.*

Designed for smart and open-plan offices, **LECTRA VIZOR** offers the possibility of autonomous and independent adjustment of direct and indirect light emission. Practical and versatile, it easily adapts to ever-changing desk layouts, always guaranteeing high lighting performances.

**UGR<16**



DIMENSIONS	A	B	C
LECTRA VIZOR	127	883	2050

LIGHTING DATA	
Power	up to 80 W
Lumen	up to 7170 lm
Efficacy	up to 89 lm/W
Colors	○ 11 (-11), ● 12 (-11)



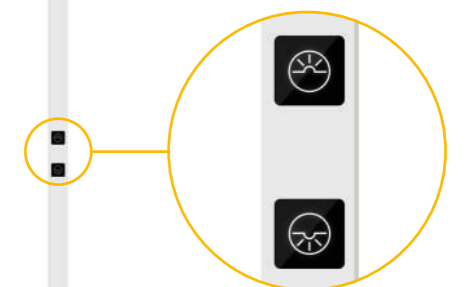
Available in Black colour (-12).



**LECTRA VIZOR** is equipped with a digital infrared (IR) control system via backlit touch buttons.

Each button allows independent and complete control of one of the two light sources:

- **upper button:** indirect light
- **lower button:** direct light



Switching on, switching off and dimming are controlled by the duration of the touch.

- **switching on and off:** by quick touches (less than 0.5 seconds);
- **change of intensity:** by prolonged pressure.

The system automatically memorises the last setting 15 seconds after the change.



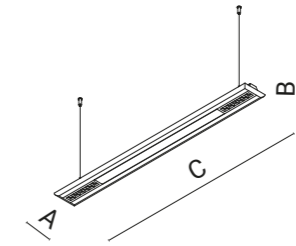
Pendant luminaires

## VIZOR

*The lighting solution that furnishes interiors with style.*

The recessed position of the light sources ensures high visual comfort and the independently controllable direct and indirect optics allow the creation of a customised lighting atmosphere that enhances spaces in residential, commercial or professional settings.

**UGR<16**

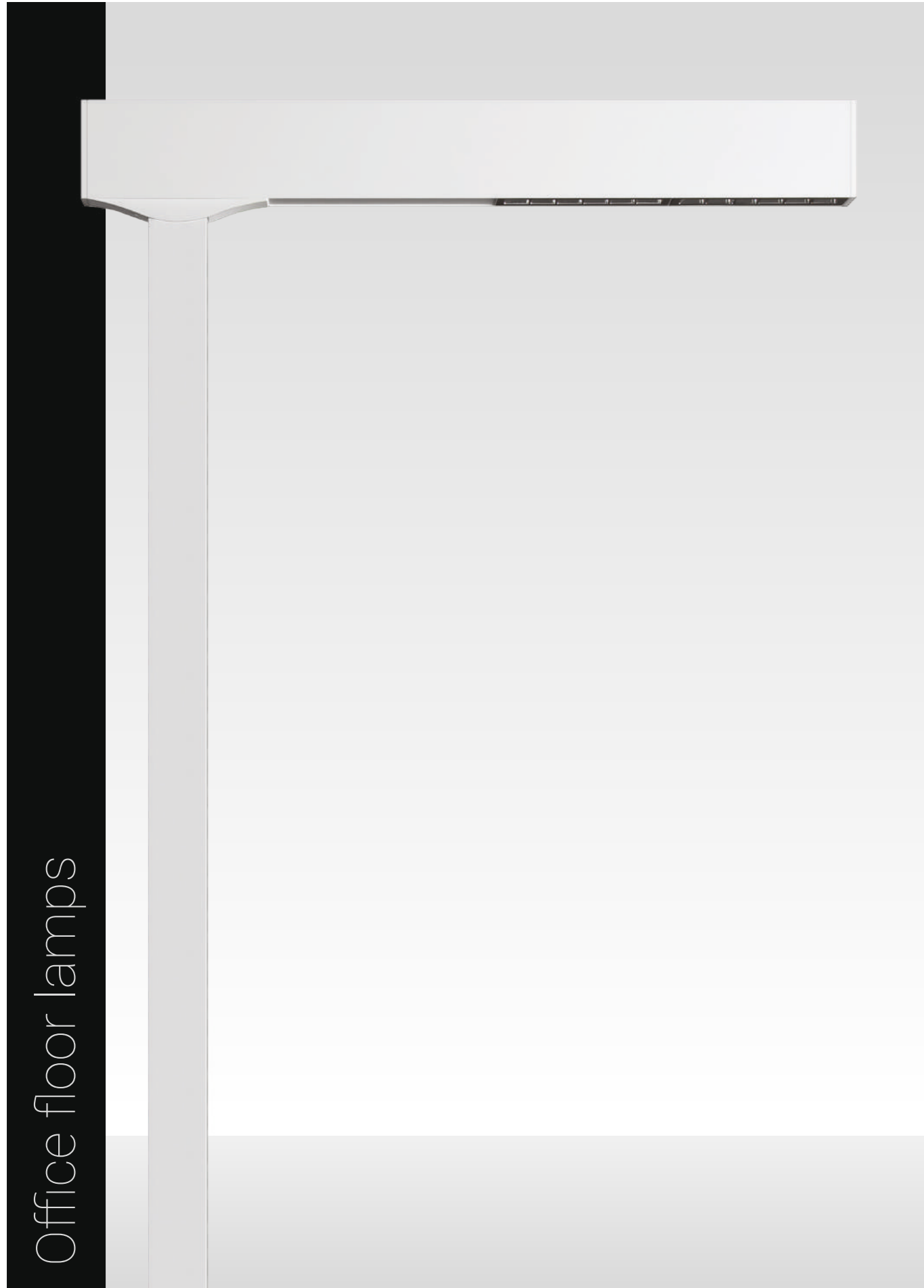


DIMENSIONS	A	B	C
VIZOR	127	42	1200

LIGHTING DATA	
Power	up to 58 W
Lumen	up to 4850 lm
Efficacy	up to 83 lm/W
Colors	○ 11 (-11), ● 12 (-11)



Available in Black colour (-12).



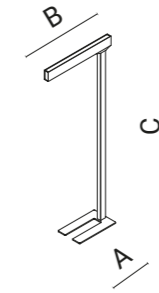
Office floor lamps

## LECTRA RIGO

*Sharp lines and controlled light for the new smart office trends.*

Featuring a bidirectional optic with independently adjustable direct and indirect light, **LECTRA RIGO** finds its natural application in professional environments with smart work stations requiring a versatile and high-quality lighting.

**UGR<16**



DIMENSIONS	A	B	C
LECTRA RIGO	52	867	2120

LIGHTING DATA	
Power	up to 54 W
Lumen	up to 6160 lm
Efficacy	up to 114 lm/W
Colors	○ 11 (-11), ● 12 (-11)

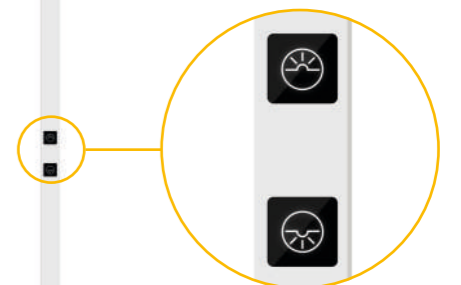


Available in Black colour (-12).



**LECTRA RIGO** is equipped with a digital infrared (IR) control system via backlit touch buttons. Each button allows independent and complete control of one of the two light sources:

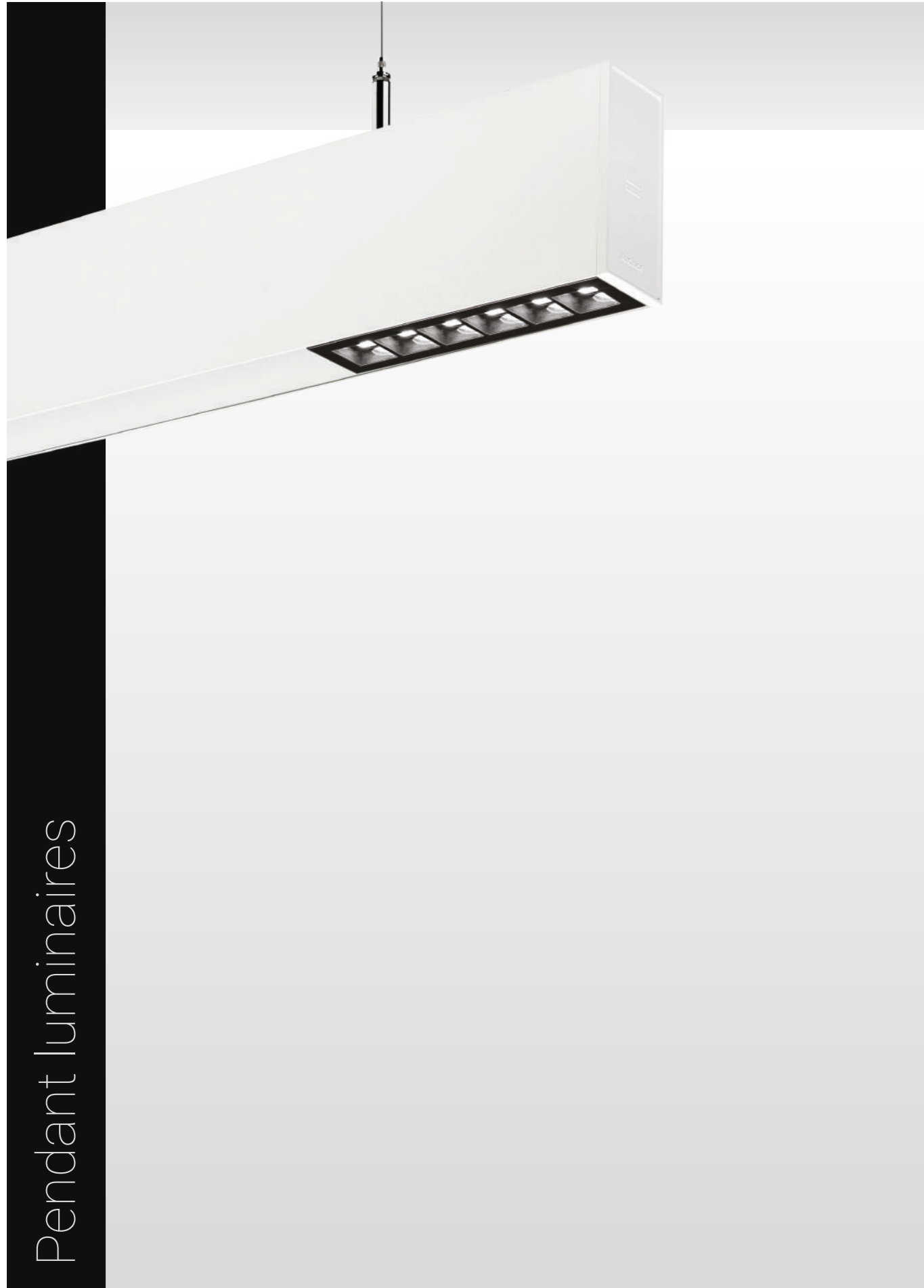
- **upper button: indirect light**
- **lower button: direct light**



Switching on, switching off and dimming are controlled by the duration of the touch.

- **switching on and off: by quick touches (less than 0.5 seconds);**
- **change of intensity: by prolonged pressure.**

The system automatically memorises the last setting 15 seconds after the change.



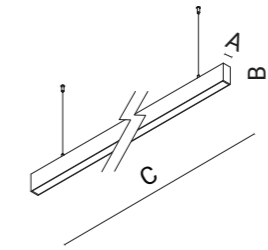
Pendant luminaires

## RIGO51

*Technical and controlled light with direct and indirect lighting.*

Available in two standard lengths and different types of optics, this pendant luminaire gives character and personality to both residential and professional interiors, offering high-quality, controllable and technical lighting.

**UGR<19**



DIMENSIONS	A	B	C
Performance+	52	110	1254
Performance	52	110	1137
Performance	52	110	1417

LIGHTING DATA	
Power	up to 58 W
Lumen	up to 6250 lm
Efficacy	up to 120 lm/W
Colors	○ 11 (-11), ● 12 (-11), ● 16 (-16)

Width= 52mm



Available in Grey colour (-16).



Available in Black colour (-12).

**PANDA270**  
Half Rim

 **Arcluce**

**Arcluce S.p.A.**

Via 1° Maggio, 6  
20070 - San Zenone al Lambro (Milan) Italy

Phone +39 02 9810981  
E-mail [info@arcluce.it](mailto:info@arcluce.it)  
Website [arcluce.it](http://arcluce.it)