

2<sup>nd</sup> April 2019

Dear Families & Friends

Welcome to the sixth week of this term – Spring is definitely in the air!

### **Safeguarding our School Community**

Please note that from Monday, 1.4.2019 that the main gate to the school is now closed at the beginning and end of the school day. We took this measure to ensure that we can keep children and parents safe when entering our school; it is extremely dangerous walking through the car park at our busiest times in the day. Please feel free to come to the office, ringing the bell by the gate. Thank you for your cooperation, and we know you will appreciate our endeavour to keep everyone safe.

### **Whole School Photo**

On Wednesday, 10<sup>th</sup> April 2019, the photographers are visiting Linden to take our whole school photo. Please ensure that your child is at school on time. To look our very best, can you please ensure that your child comes to school in our Linden uniform: white polo shirt or shirt, blue jumper, grey trousers and black school shoes.

### **PAID SCHOOL MEALS PRICE INCREASE**

We have a duty to inform you that our catering services have notified us of a price increase for paid school meals from £1.75 to £2.30 per meal – an increase of 55p. The new price will take effect from Monday, 1<sup>st</sup> April 2019. Please note that there has not been a price increase for several years.

However, as some school meals have been paid for to the end of the half-term, i.e. until Easter, the governors and senior leadership of the school have decided to fund this increase until the end of the Spring term.

From Monday, 29<sup>th</sup> April 2019, the new price of £2.30 will be chargeable which will equate to a weekly charge of £11.50. For Summer Term 1, the charge will be £43.75 and for Summer Term 2, the charge will be £69.00. The total for the whole term is £112.75.

If you wish to change the dinner arrangements from 29<sup>th</sup> April 2019, please notify the school office as soon as possible but **at the latest on Thursday, 11<sup>th</sup> April 2019.**

### **“Punctuality is the first step towards success.”**

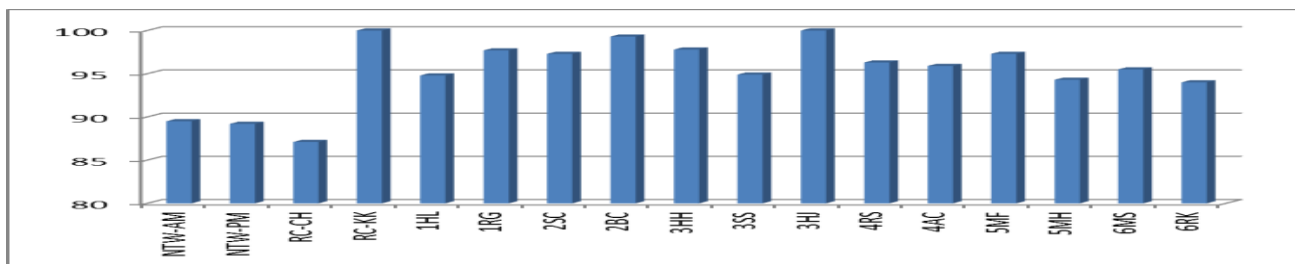
Please ensure that your child arrives well in time for the whistle at 8.55am. Even only 5 minutes regular lateness leads to 3.4 days of teaching time lost over the year, 10 minutes more than doubles this figure.

Should you experience difficulty in bringing your child to school on time, we have a walking bus and the breakfast club to help parents with the morning rush. If you wish to find out more about it, please contact the school office.

### Attendance Matters

Our Attendance Target for this year is **96%**. Find below the attendance for last week, and we are pleased to say that we have achieved and exceeded our target last week. Let's keep it up next week – hopefully, the kinder weather will help. Please help us to maintain a high level of attendance by sending your child to school each day. Eight out of seventeen classes achieved our target – RC-KK, 1-RG, 2-SC, 2-BC, 3-HH, 3-HJ, 4-RS, and 5-MF. The KS1 award was presented to RC-KK and the KS2 award was presented to 3-HJ. Well done keep it up! 406 children achieved 100% attendance. A FANTASTIC EFFORT!

NTW-AM	NTW-PM	RC-CH	RC-KK	1HL	1RG	2SC	2BC		<b>TOTAL</b>
<b>89.5</b>	<b>89.2</b>	<b>87.1</b>	<b>100.0</b>	<b>94.8</b>	<b>97.7</b>	<b>97.3</b>	<b>99.3</b>		
3HH	3SS	3HJ	4RS	4AC	5MF	5MH	6MS	6RK	<b>96%</b>
<b>97.8</b>	<b>94.9</b>	<b>100.0</b>	<b>96.3</b>	<b>95.9</b>	<b>97.3</b>	<b>94.3</b>	<b>95.5</b>	<b>94.0</b>	



### FORTHCOMING DATES

- 4.4.2019 Our Year 5 and Mayflower Primary School 'Living Well Together' presentation to Year 4. We have spaces for 15 Year 5 parents on a first-come-first-served basis.
- 4.4.2019 Magic Show at 3.30-4.30pm in KS2 hall – tickets are still available
- 5.4.2019 Year 4 Easter Assembly – performances at 10.00am and 2.00pm
- 10.4.2019 Whole-school Photo
- 11.4.2019 Year 1 Vaisakhi Assembly performances at 10.00am and 2.00pm
- 12.4.2019 School closes for Easter Break at 3.15pm
- 29.4.2019 School opens after Easter Break