



Palterton Primary School

Back Lane, Palterton, Chesterfield, Derbyshire S44 6UN

telephone : (01246) 823143

e mail: [info@palterton.derbyshire.sch.uk](mailto:info@palterton.derbyshire.sch.uk) • website: [www.paltertonprimary.co.uk](http://www.paltertonprimary.co.uk)

Headteacher : Mrs R Horsley

*Please remember parking safely shows you care.*

16<sup>th</sup> May 2019

Dear Parent/ Carer,

Each term we present a range of clubs for the children, we aim to provide clubs that will be suitable for the complete age range in school too. The clubs we are offering are shown below. As always, we ask you to book and pay for these in advance.

Regrettably, **we are unable to accept phone call requests** for children to stay at clubs on days where they are not booked in already, except where there are **extremely urgent and unavoidable circumstances**. This is to ensure that the planned clubs can go ahead and the staff in school aren't having to change arrangements with the children at the end of the day. Thank you for your co-operation and understanding with this.

**Clubs finish at 4:30 and we appreciate you collecting your child/ren promptly. If you are going to be unexpectedly late for example stuck in a traffic jam, please ring the school (when/ if it is safe to do so) to let staff know.**

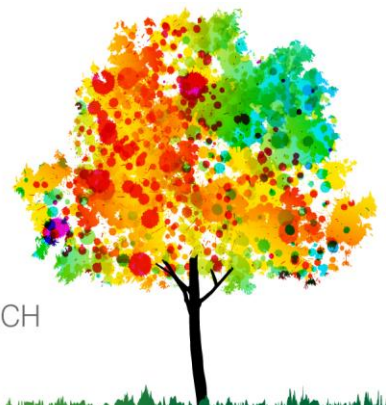
**After school clubs will run from Wednesday 5<sup>th</sup> June 2019 until Monday 22<sup>nd</sup> July 2019. Please note that our club charges are £3 per child per session.**

Please complete the form to book clubs for next term and return it to school by **Wednesday 5<sup>th</sup> June** with the correct payment or pay online at ParentPay to secure your child's place.

If you require any further information regarding our after school clubs please do not hesitate to contact us.

Yours sincerely,

Mr Whittaker  
PE Lead



where learning is...RICH



**Clubs and Activities Return Form**

**Wednesday 5<sup>th</sup> June 2019 until Monday 22<sup>nd</sup> July 2019.**

**Name of Child** .....

My child would like to attend the following clubs:  
 \*Please highlight your choices

			Term Cost each Club £
Monday	<b>(All)</b> <b>Basketball</b> <b>Chesterfield FC</b>	<b>(All)</b> <b>Construction</b>	£21
Tuesday	<b>(All)</b> <b>Art</b>	<b>(All)</b> <b>Multi Sports</b> <b>Samba Sports</b>	£18
Wednesday	<b>(All)</b> <b>Craft</b>	<b>(KS2)</b> <b>Table Tennis</b> <b>(max 10)</b> <b><u>First 10 to arrive back at school</u></b> <b><u>with the correct payment.</u></b>	£21
Thursday	<b>(All)</b> <b>Gardening</b> <b>(max 10)</b> <b><u>First 10 to arrive back at school</u></b> <b><u>with the correct payment.</u></b>	<b>(All)</b> <b>Dance</b> <b>Chesterfield FC</b>	£21
Friday	<b>(All)</b> <b>Film</b>	<b>(Year 1 - 6)</b> <b>Football</b>	£21
<b><u>Total cost for Term 6</u></b>			£ _____

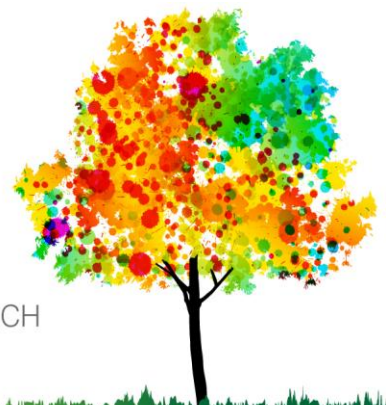
**I enclose ..... payment for Term 6**  
**I have paid ..... onto ParentPay**

I give permission for my child to stay late on the relevant days.  
 (Please make cheques payable to Palterton Primary School)

Signed \_\_\_\_\_

Date \_\_\_\_\_

KS1 – Reception, Year 1 and Year 2.  
 KS2 – Years 3, 4, 5 and 6.  
 All – Available to whole school



where learning is...RICH