

Spring term Week 1 - 7th January 2019



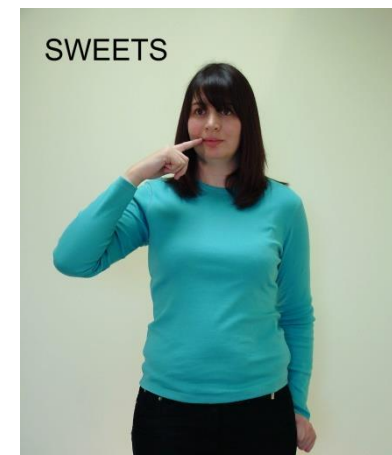
LOVE

Both hands rest over the heart.



YOGHURT

Finger spell 'Y' then non dominant hand forms a 'pot' shape and first two fingers of dominant hand dip into the pot and move towards the mouth.



SWEETS

With index finger of dominant hand, twist round at the side of the mouth.

Spring term Week 2 - 14th January 2019



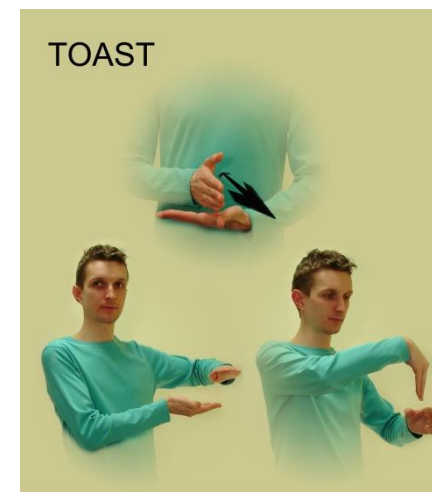
TO PUT

Mime the action.



JAM

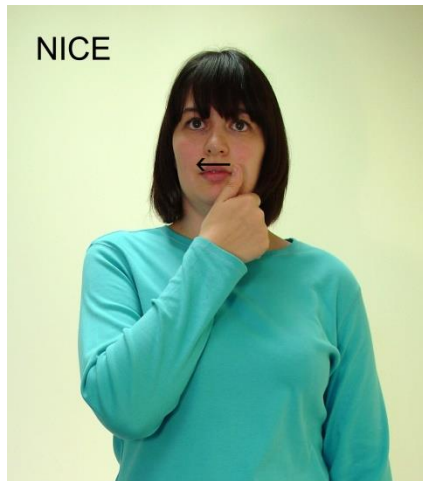
Non dominant hand forms a 'pot' shape and first two fingers of dominant hand dip into the pot then mime spreading over the palm of non dominant hand



TOAST

Sign 'bread' then sign 'under' if it goes under a grill or sign 'in' if it goes in a toaster.

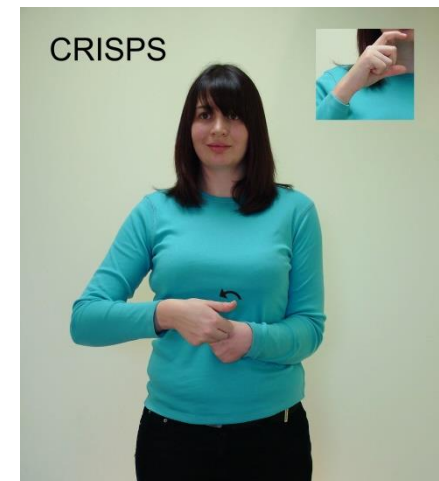
Spring term Week 3 - 21st January 2019



Move 'good' hand across the lips

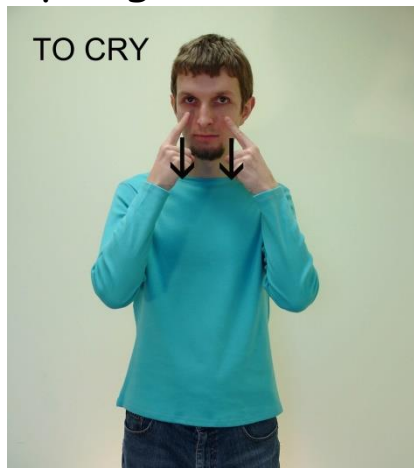


Non dominant hand mimes holding a potato.
Dominant hand mimes peeling it.



Sign 'potato' and 'c'.
Ask your speech and language therapist
for other local variations of this sign.

Spring term Week 4 - 28th January 2019



Index fingers of both hands move down
the cheeks.



Index finger of dominant hand points
to the neck and twists.



Dominant full hand makes 'C' shape
and twists sharply at side of mouth.

Spring term Week 5 - 4th February 2019



SANDWICH

Palms fit together with fingers in opposite directions. Hands move together.



CHEESE

Palm of non dominant hand is uppermost and dominant hand makes a wedge shape on it.



BUTTER

The first two fingers of dominant hand mime spreading over the palm of non dominant hand

Spring term Week 6 - 11th February 2019



DANGEROUS

Move the dominant hand which is in a flat shape up to the forehead.



NOISY

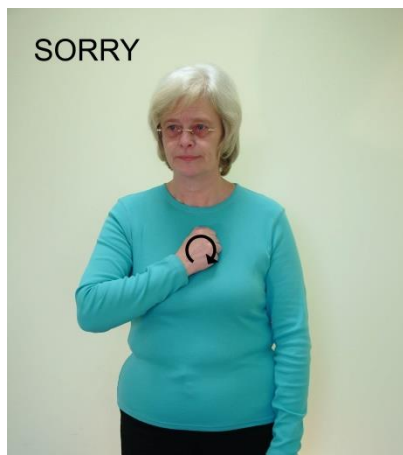
Index finger makes a small circular movement next to the ear.



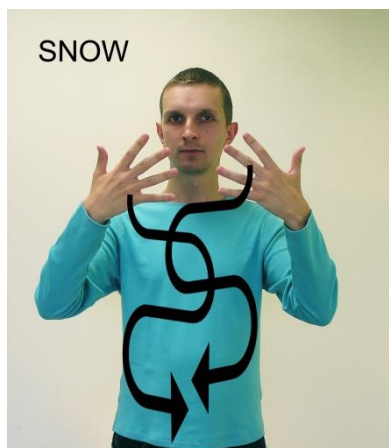
QUIET

Hold index finger in front of the mouth.

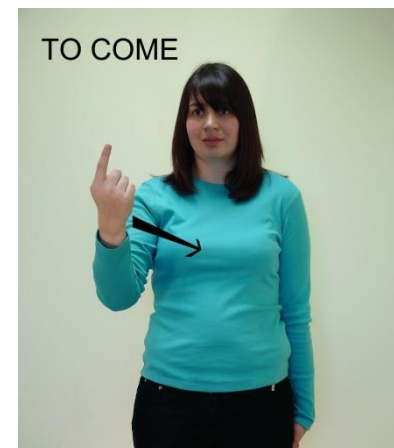
Spring term Week 7 - 25th February 2019



With dominant hand closed, hand moves in a small circular motion on the chest.

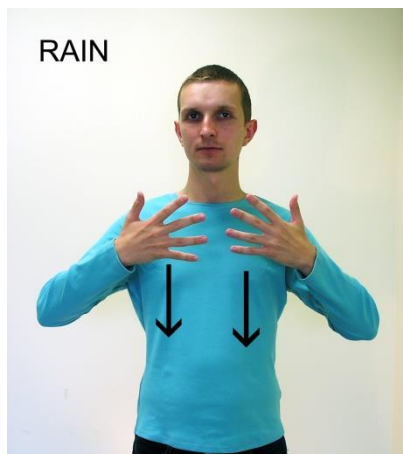


With fingers spread, hands move down in a swirling motion.



Index finger of dominant hand moves to the body.

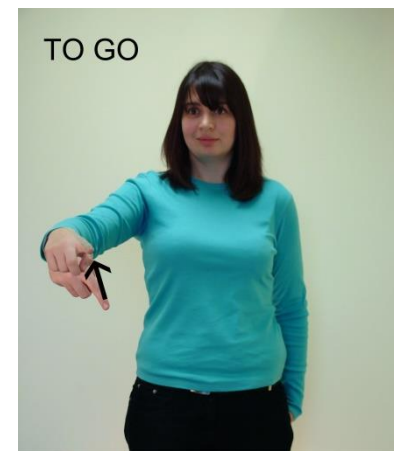
Spring term Week 8 - 4th March 2019



With fingers spread, wiggle fingers as hands move down.



With first two fingers in a 'v' shape, move down quickly.



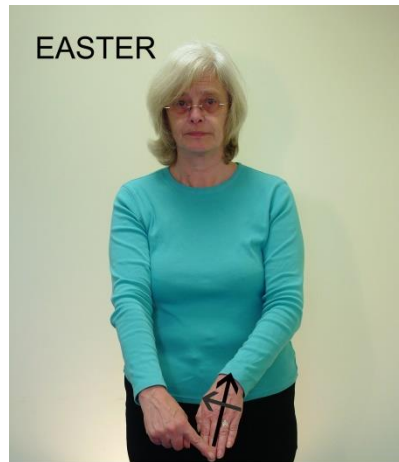
Index finger of dominant hand moves away from the body.

Spring term Week 9 - 11th March 2019



FLOWER

With a bunched hand move from side to side of nose as if to smell it's perfume.



EASTER

Index finger traces the cross on the back of the hand. Also sign for "hot cross bun".



GROW (to)

Move hand up slowly and spread fingers.

Spring term Week 10 - 18th March 2019



SUN

Index finger outlines the shape of the sun.



CHOCOLATE

Make a 'c' hand with the dominant hand and circle the chin.



EGG

Hold egg with non dominant hand. With dominant hand in the knife sign ie. first two fingers together, bring knife down towards the egg.

Spring term Week 11 - 25th March 2019



Hand is held with fingers together and moves against the cheek.



With palms together, mime opening the card with the upper hand.



With first two fingers of each hand pointing upwards, move fingers back and forwards.