



**Kings Mill School**  
**RESIDENCE STAFF**



**Head of Care**  
Steve Miller



**Senior Care Officer**  
Laraine Hancock



**Senior Care Officer**  
Sarah Matschke



**Senior Care Officer**  
Nathan Taylor

**Care Officers**



Gemma Bottrill



Chris Bowers



Kim Dixon



Leanne Parker



Liz Hubbard



Sally Ingram



Hayley Mason



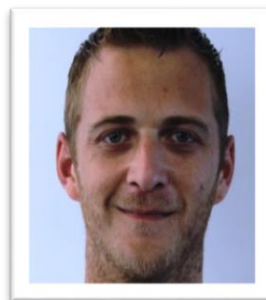
Sian Munday



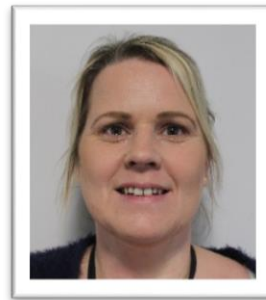
Gill Parker



Jean Richardson



Danny Savage



Emma Wilmot



**Night Care Assistants**



Eluned Harewood



Julie Hanes



Carmen Kinsley



Carol Lee



Jennifer Macmillan

**Supply Care Officers/Night Care Assistants**

Sally Iveson