

NORTH FERRIBY C E PRIMARY SCHOOL

HEALTH AND SAFETY POLICY

Last Review Date:	Spring 2019
Next Review Date:	Spring 2020
Policy Type:	School
Co-ordinator:	Mrs Atkinson
Link Governor:	Derek Shepherd
Committee:	F&GP

Mission Statement:

A Christian School with children at its heart.

Christian Values Statement:

At North Ferriby CE Primary School, we keep Christian values at the heart of our school community where we live, love and learn together.

Ethos Statement for North Ferriby CE VC Primary:

Recognising its historic foundation, the school will preserve its religious character in accordance with the principles of the Church of England and in partnership with the Church at parish and diocesan level.

The school aims to serve its community by providing an education of the highest quality within the context of Christian belief and practice.

It encourages an understanding of the meaning and significance of faith and promotes Christian values through the experience it offers to all its pupils.

YORK DIOCESAN BOARD OF EDUCATION

North Ferriby CE Primary School recognises the benefits of a positive health and safety culture in promoting an effective learning environment in which employees, students and visitors are protected from harm.

We also appreciate that whilst managing our activities we need to be risk aware, but not necessarily risk averse.

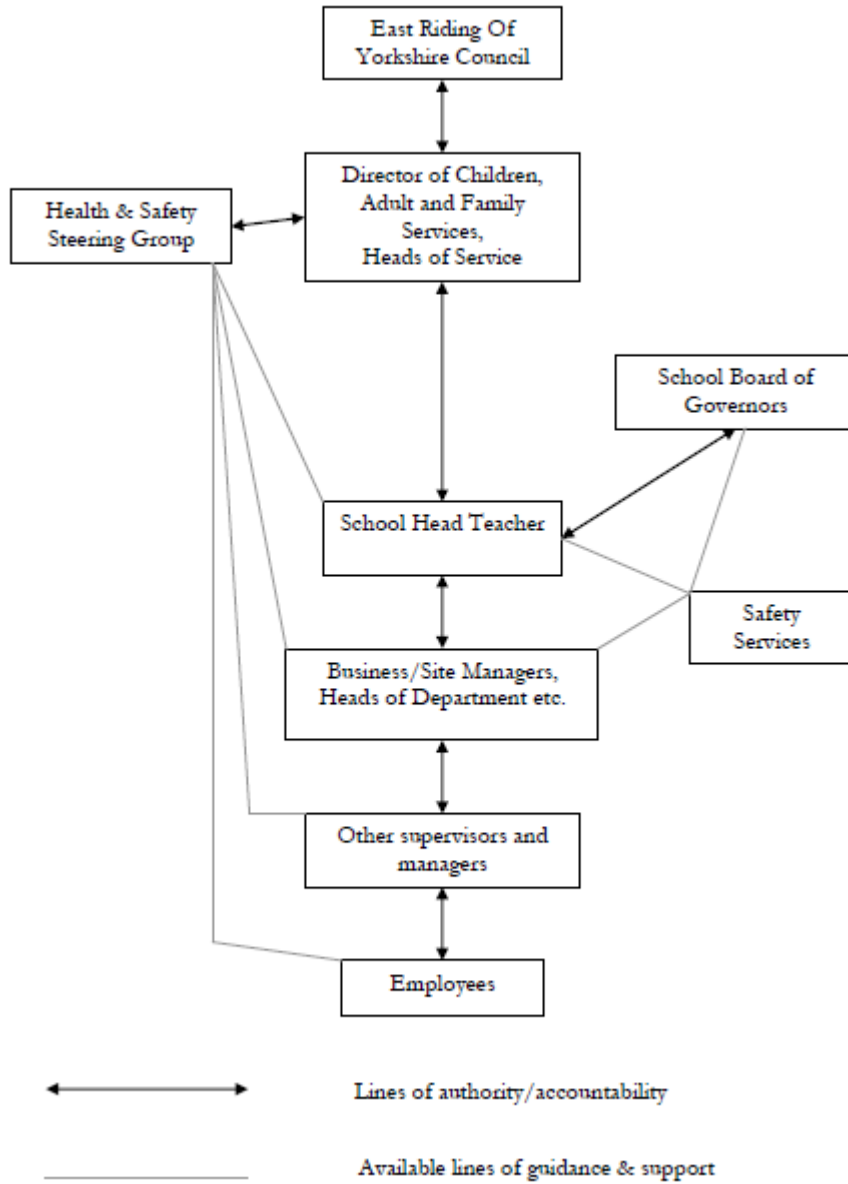
In particular the school will provide sufficient resources, time, effort and finance, to ensure, that as far as is reasonably practicable:

- It will safeguard the health, safety and welfare of its employees and anyone else who may be affected by its activities.
- Have arrangements to ensure that articles and substances are free from risks to health and are safe to use, handle, store and transport.
- Provide information, instruction, training and supervision as is necessary to ensure the health and safety at work of its employees and students.
- Maintain the school in a condition that is safe and without risks to health including; safe means of access and egress and welfare facilities.
- Consult with employees or their recognised representatives about health and safety matters.

This policy will be reviewed on a regular basis and in any event, not less than every two years.

Organisation for Safety

Lines of Responsibility.



Roles and Responsibilities

School Governors

Governing bodies must act as a corporate body.

The governing body carry out their function with the aim of taking a largely strategic role in the running of the school. This includes setting up a strategic framework for the school, setting aims, objectives and policies and targets for achieving the objectives and reviewing progress.

In foundation and voluntary aided (VA) schools the governing body as the employer has overall responsibility for health and safety matters. In community and controlled schools the local authority has overall responsibility.

In all cases the governing body will ensure: -

- A health and safety policy has been produced reflecting the health and safety management arrangements specific to their individual school (ie this document);
- A school health
- Risk assessments are carried out;
- All health and safety matters within the school are effectively managed;
- Wellbeing of the Headteacher, all members of staff and children remains a high priority and that a wellbeing policy is implemented and managed effectively at all levels,
- The summary report from the site safety inspection will be fed back to the F&GP committee each term (buildings management report)
- That an annual audit of the school's Health and Safety Management System is completed.

Headteachers

Headteachers under the direction of the governing body are responsible for implementing the corporate and directorate health and safety policies and the school's health and safety policy. To achieve this, Headteachers must: -

- Produce and maintain a school specific health and safety policy (ie this document) and supporting safety procedures. Ensure that all health and safety matters within the school are effectively managed;
- Produce, monitor, review and report progress on the school's health and safety routines and processes to the F&GP group;
- Arrange for appropriate consultation with employees in the workplace;
- Ensure all new employees receive a suitable and sufficient safety induction;
- Ensure the wellbeing of all staff and children remains a high priority and that the wellbeing policy is implemented and managed effectively at all levels;
- Ensure that suitable and sufficient risk assessments are carried out, reviewed and that safe systems of work are developed and communicated to all staff;

- Ensure appropriate equipment, tools and protective equipment is provided to enable work to be done safely. Maintain it and where necessary to ensure safety, inspect it appropriately with records of inspections maintained;
- Ensure relevant statutory inspections take place within their school;
- Ensure all accidents, incidents and dangerous occurrences are investigated and recorded promptly in accordance with the accident reporting procedure;
- Ensure that an educational visits co-ordinator is appointed and that visits are managed safely;
- Ensure that formal health and safety inspections are carried out at least once each term and remedial action taken where necessary.
- Ensure that health and safety is a standard agenda item on appropriate staff meetings.

These duties may be delegated to other responsible managers, but oversight and responsibility remain with the Headteacher.

Business Managers, Site Managers, School Department Heads etc.

Managers are responsible and will be held accountable for achieving compliance with this policy within their area of service delivery.

They are responsible for the duties delegated to them by the Headteacher.

In particular they have the following responsibilities;

Business Manager

- Visitors on site (including contractors)
- Cyclical Maintenances
- Security
- Record any Health and Safety Issues and manage any resultant repairs or control measures

Caretakers

- Visitors on site (including contractors)
- Daily site check
- Gritting schedule
- Security
- Report any Health and Safety Issues to the school business manager

Employees

- Report any Health and Safety Issues to the caretaker / school business manager

Every employee is expected to co-operate with the Council, Governors and the Headteacher on all aspects of health and safety and in accordance with section 7 of the Health and Safety at Work etc Act take reasonable care of their own safety and that of others who may be affected by their acts or omissions.

Furthermore, the following requirements are expected of every employee: -

- Carry out assigned tasks and duties in accordance with the information, instruction and training given, following agreed risk assessments and safe methods of working;
- Not to intentionally or recklessly interfere with or misuse anything provided in the interests of safety, health or wellbeing, or to do anything likely to endanger themselves or others;
- Use tools, equipment and materials provided for their intended use only, in accordance with the information, instruction and training they have been given ensuring that damaged faulty equipment is not used and reported to their supervisor/line manager;
- Through the Employee Development Review process and regular meetings, cooperate with managers in identifying any training needs, including updates and refresher training;
- All employees have a responsibility to act immediately upon discovering or receiving a report of a workplace hazard to rectify or otherwise make the situation safe,
- Raise any concerns about their wellbeing in an open and frank way so that appropriate support can be given and action taken to address these concerns in line with the Council's wellbeing policy;
- Report all accidents and any unsafe practices or conditions to their supervisor/line manager.

Arrangements for the Management of Health & Safety

Policy and Guidance

School policies and guidance are produced and regularly reviewed. These will be brought to the attention of all relevant employees at induction on first appointment and thereafter, following any significant change.

These arrangements should be read in conjunction with those contained in the Directorate and Corporate Health and Safety Policies.

Health & Safety Advice

Advice is available from the council's safety services section and in addition to visits, e mail and telephone advice, has a range of guidance documents and resources available on their Insight Intranet pages.

Consultation on Health, Safety and Wellbeing

The school will:

- Consult with employees about matters affecting their health, safety and wellbeing,
- Ensure that health and safety is a standing item on all team and management meetings,
- Where requested under the Safety Representatives and Safety Committees or the Health & Safety (Consultation with Employees) Regulations form a school Health and Safety Committee.

Training

All employees, including temporary and agency employees will receive,

- Induction training – on commencement of employment or immediately after any significant change to their duties, responsibilities or place of work, It will include:
 - Emergency procedures
 - 1st aid arrangements
 - Accident reporting
 - Hazard/safety issue reporting
 - Location of policy, guidelines and other relevant documents
 - Relevant risk assessments and safe systems of work
 - Smoking restrictions
 - A tour of the premises/site
 - Other relevant information
- Competency based training – relevant to the individual's role and development needs will be identified by managers and headteachers and delivered by the most efficient means, e.g. specialist courses or local in house team discussions.

Records of competencies, skills and training will be kept for management purposes.

Audits

The school governors and headteacher are expected to ensure that the school's health and safety management systems and records are audited once per year to identify any weaknesses and areas for improvement.

Inspections

Periodic health and safety inspections (including Fire Safety) will be carried out by the headteacher or those delegated with the task. The frequency of inspection of any particular item or topic may vary from daily, weekly, monthly, six monthly or annually as required by legislation (Statutory Inspections), risk assessment or good practice.

General health and safety inspections of the premises and site will be carried out at least once per term.

Results of inspections, including any remedial actions, will be recorded.

Risk Assessments

All school activities will be subject to a risk assessment and where there are any significant risks identified, they will be recorded.

The process of recording a risk assessment will include identifying the relevant control measures and devising a safe system of work that the person carrying out the task follows to ensure the health and safety of themselves and others who may be affected.

Health Surveillance

Where required by specific legislation and/or a risk assessment, health surveillance will be carried out to monitor and ensure that the individual suffers no work related adverse effects from their employment at our school.

Emergency Procedures

The school will ensure that there are written procedures in place that are to be followed in the event of an emergency that may affect the occupiers of the school premises or site including those temporarily off site on educational visits.

The procedures will extend beyond fires and bomb threats and will also consider any other significant threat.

Where necessary, training will be delivered to anyone with specific roles to play within the procedures and this may extend to practice drills, e.g. fire drills.

Other arrangements to ensure that safety systems are maintained and tested will be put in place.

Accidents, Injuries, Diseases and Dangerous Occurrences

The Reporting of Injuries, Diseases and Dangerous Occurrences regulations (RIDDOR) stipulate that certain events have to be reported to the Health and Safety Executive (HSE). It is essential that the guidance from Safety Services is followed in a timely manner so that accidents are recorded, investigated and reported to the HSE appropriately. Further guidance and documents are available:

<http://insight.eastriding.gov.uk/directorates/cr/hr/safety-services/accidents/>

Employment of Young or Vulnerable People

The safety of young (under 18 years) and vulnerable people (under 25 years) has to subject to a specific risk assessment and/or a review of relevant existing risk assessments to take account of their inexperience and ensure they are not subject to any additional risk of harm or injury. The parent or carer must be provided with comprehensive and relevant information before the young person begins work.

Other Statutory Arrangements and Regulations (Thorough Inspections, Asbestos, Water Hygiene etc.)

Where relevant, the school headteacher will ensure that appropriate management arrangements are in place to maintain premises, equipment and systems in a safe condition.

Contractors and Self Help Maintenance or Construction

Visiting contractors must be managed whilst on the school site.

Information about the risks, hazards and control measures (e.g. emergency procedures, asbestos, segregated area of work, etc.) that each party will be exposed to for the duration of an activity must be exchanged.

School staff must raise any concerns about contractor safe working practices immediately, if it looks wrong or anyone is unsure, stop and ask. Seek further guidance if necessary.

Any proposal to engage contractors to carry out construction activities must follow all permissive protocols (internal, planning, building control, etc.) before activity commences. Such projects must comply with the Construction, Design and Management Regulations which places duties on Clients (the school), designers, contractors etc. The 'Schools Self Help Contract Monitoring Form' must be submitted to Safety Services. Further guidance can be obtained from Safety Services (<http://insight.eastriding.gov.uk/directorates/cr/hr/safety-services/safety-topics/construction-design-management/>) or Infrastructure & Facilities.

Safeguarding and Security

The school will have in place measures to safeguard young people, vulnerable individuals, and visitors including;

- a policy
- security measures
- vulnerable areas that are well supervised
- appropriate disclosure and barring checks
- visitor signing in and identification arrangements

Other sources include:

- First Aid Policy
- Medicines in School Policy
- Asthma Policy

Appendix A – School Health and Safety Management Plan

Inspections/Audit

Periodic fire safety inspections need to be carried out as follows:

Daily: Verification that the 'opening' up procedure has been carried out so that the building is ready to be occupied.

Weekly

Fire alarm test, visual check of escape routes, fire alarm panel, emergency lighting and fire fighting equipment to identify any obvious deficiencies and rectify them.

Monthly

Emergency lighting function test, a management systems check and a comprehensive check that all the fire safety precautions are in place and functioning correctly.

Termly

A full fire evacuation of the premises. Remember that you may need to carry out fire drills at other times for the benefit of staff not at work during school the school day.

Six Monthly

Senior manager's simple audit of systems and records.

Annually

Staff fire safety training (hazards and risks you have identified, the management systems you employ to manage them including the evacuation procedures.

Playground check

On-going

Cyclical checks

To include:

Water hygiene

Emergency lighting

Fire extinguishers

Fire alarms

Gas boiler servicing

Pat testing

Electrical fixed wire