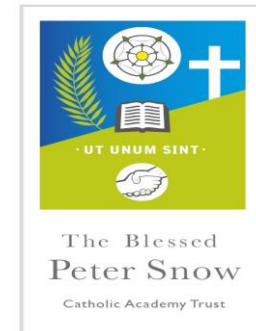

Catholic Academy Trusts

May 2019

Blessed Peter Snow



Our Growing Family of Schools
Our Trust



History

- 2012 - Bishop Arthur gave permission for schools in the Diocese of Leeds to convert to academies
- Condition – Mission must be to strengthen Catholic education and promote the distinctive nature of Catholic academies
- Diocesan Trustee determined model of academies – five diocesan trusts



Diocesan Trust Model

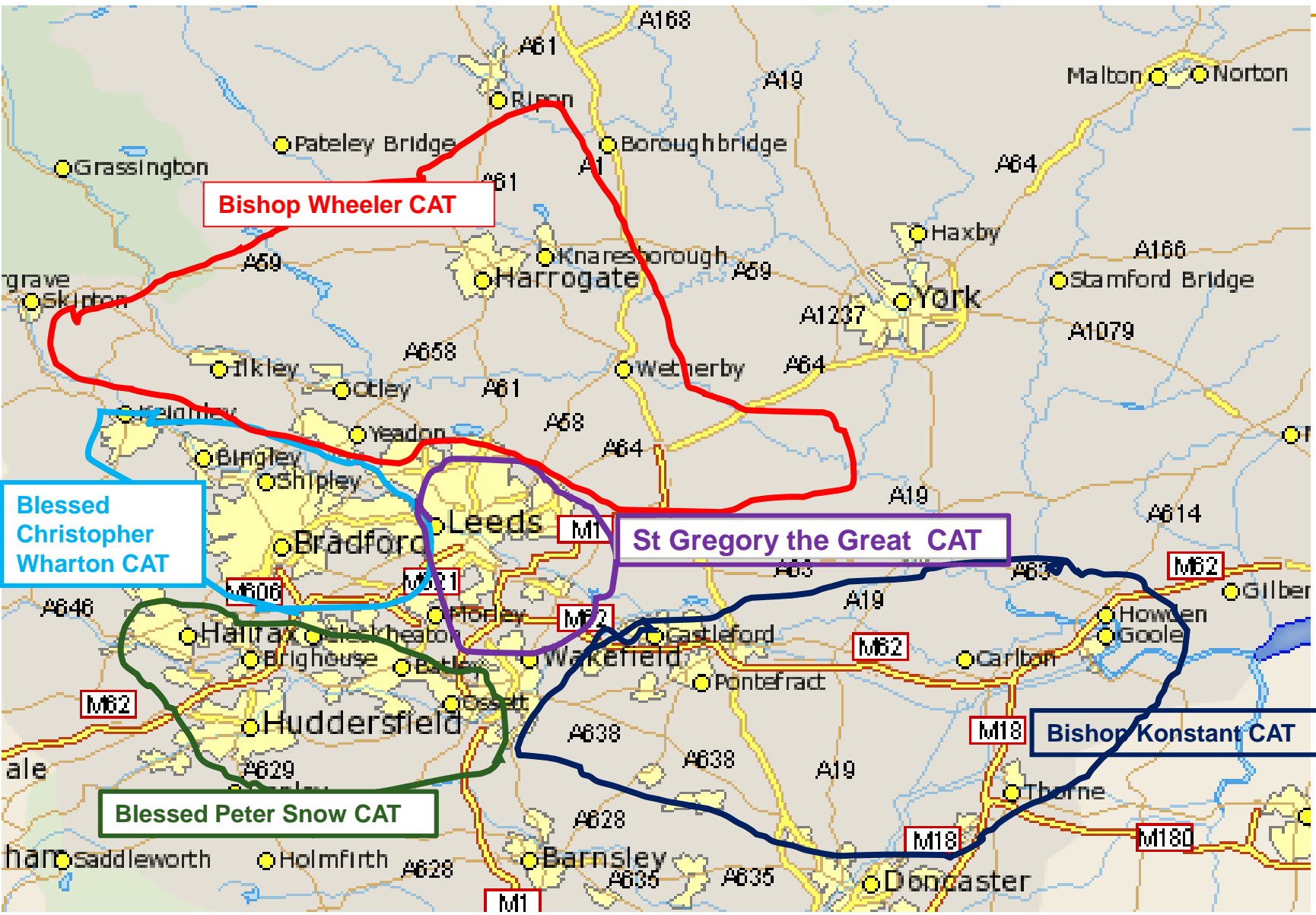
Bishop Marcus has endorsed the future pathway with his requirement for all schools to become part of a family

My conviction comes from the faith that we share as one family in the Church; faith in Lord Jesus Christ who will guide us with His light and sustain us with His grace as we make this journey. The strength of any family is in the quality of its relationships. This is evident when its members, respecting the dignity of each, work together for the good of one another and in the service of the common good. This too will be our strength in the years ahead if, as a diocesan family of schools, we are able to build relationships, forge solidarity and develop a collaborative framework of family groups of schools that is resilient to present and future challenges, and provides us with the confidence to take advantage of new opportunities.



Catholic MAT – Key Principles





The Landscape 2018-2019

■ Bishop Konstant Catholic Academy Trust

St Joseph's at Pontefract, Castleford, Moorthorpe, Sacred Heart Hemsworth St Benedicts, St Ignatius, St Austin, Holy Family & St Michael, English Martyrs, St John's Normanton, St Thomas a Becket, St Wilfrid's,



■ Bishop Wheeler Catholic Academy Trust

St Joseph's at Otley, Pudsey, Harrogate, Ss Peter & Paul, Sacred Heart Ilkley, St Mary's Horsforth, St Mary's Knaresborough, St Mary's Menston, St Stephen's, Holy Name,



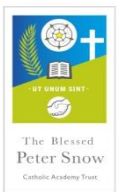
■ Blessed Christopher Wharton Catholic Academy Trust

St Anne's, Keighley; Our Lady of Victories, Keighley, St Walburga's, St John the Evangelist, St Winefride's, St Joseph's Keighley,



■ Blessed Peter Snow Catholic Academy Trust

St Malachy's, Halifax; Sacred Heart, Sowerby Bridge; St John Fisher, Dewsbury



■ St Gregory the Great Catholic Academy Trust

Christ the King, Bramley



Academies

- Formally group schools under one legal organisation – the Catholic Academy Trust
- Are independent state schools responsible to the Bishop and Secretary of State for Education
- Local authorities are responsible for coordinated admissions, safeguarding and SEN
- Take responsibility for their staff, land and buildings and can look for new ways of working together to benefit the children



Advantages

- A shared vision for Catholic Academy Trust schools whilst retaining each school's individual characteristics and ethos;
- Greater protection for individual schools in a rapidly changing political, financial and educational climate;
- Opportunities to share expertise, facilities and resources from specialist teachers across a trust that will benefit all;



Advantages

- Formalised school liaison allowing joint liaison and working together to provide the best quality of provision for the benefit of local children and young people;
- Improved use of individual school's finances through economies of scale offered by the bulk acquisition of services and resources;



Blessed Peter Snow Catholic Academy Trust

Primary:

Sacred Heart Catholic Primary Academy, Halifax (Calderdale)

St Malachy's Catholic Primary Academy, Halifax (Calderdale)

St Joseph's Catholic Primary, Halifax (Calderdale)

St Joseph's Catholic Primary, Brighouse (Calderdale)

St Mary's Catholic Primary, Halifax (Calderdale)

St Patrick's Catholic Primary, Elland (Calderdale)

Holy Spirit Catholic Primary, Heckmondwike (Kirklees)

St Mary's Catholic Primary, Batley (Kirklees)

St Joseph's Catholic Primary, Dewsbury (Kirklees)

St Joseph's Catholic Primary, Huddersfield (Kirklees)

St Paulinus Catholic Primary, Dewsbury (Kirklees)

St Patrick's Catholic Primary, Birstall (Kirklees)

St Patrick's Catholic Primary (Federation), Huddersfield (Kirklees)

Our Lady of Lourdes Catholic Primary (Federation), Huddersfield (Kirklees)

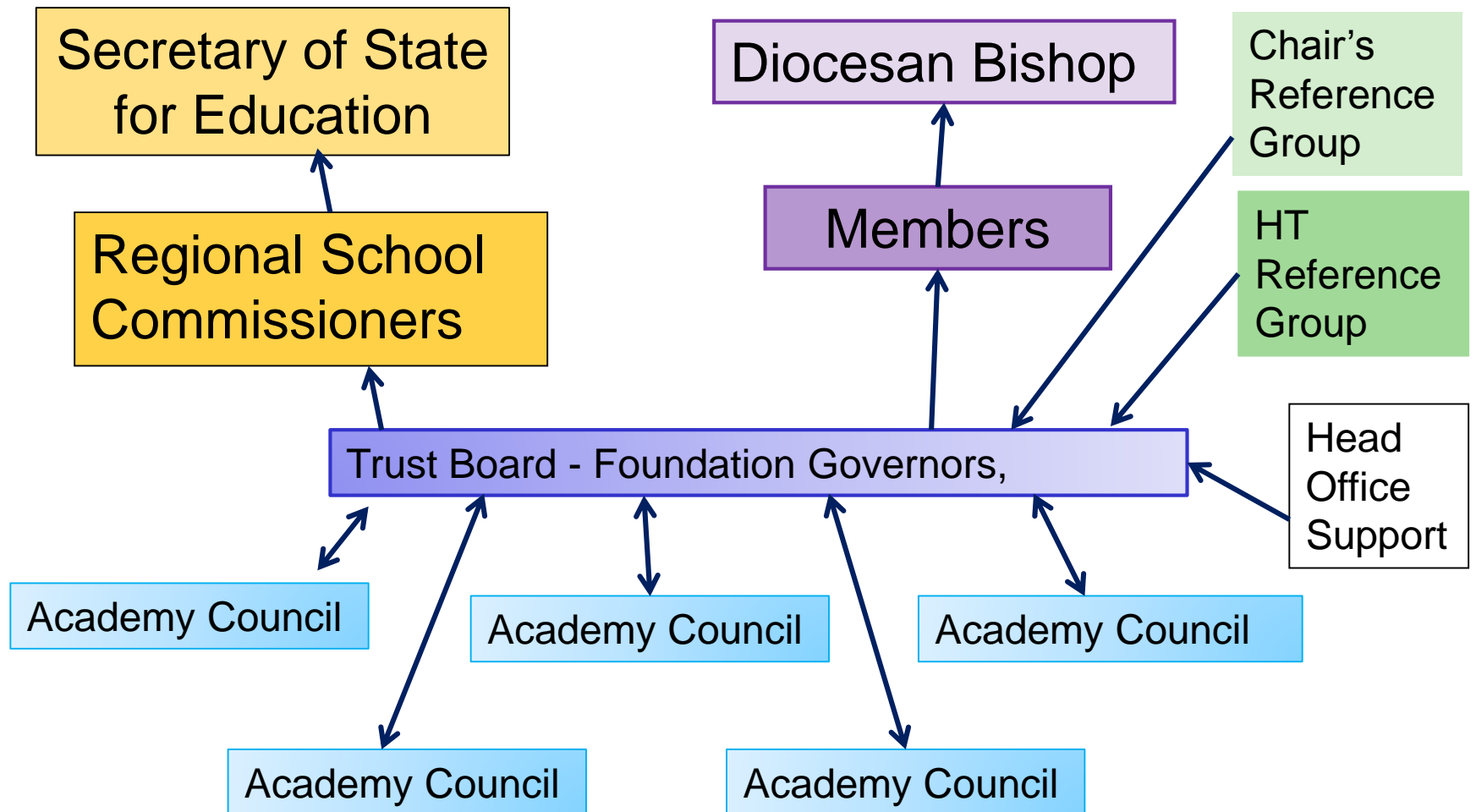
Secondary:

St John Fisher Catholic Voluntary Academy, Dewsbury (Kirklees)

All Saints Catholic College, Huddersfield (Kirklees)



CAT Accountability



Typical Timeline for a straightforward conversion (4 months)

0
Month 1

- Application to Diocese following resolution being passed

Month 1

- Approval from Diocesan Trustee
- Application to DfE, parental consultation, SI strategy

Month 2

- RSC/DfE approval and appoint project lead
- Due diligence, preparation of documents
- Land questionnaires, finance, TUPE

Month 3

- Confirmation of CTA and land leases
- Responses to DfE questions
- Agreed documentation including leases signed by all parties

Month 3

- Details of Bank account to DfE/ESFA

Month 4

- Conversion and post conversion support



Building Capacity in BPSCAT

- Aiming for all schools joining together- advantages here;
- Proposed date to aim for - September 2020;
- Autumn term 2019 – Further directors, a new chair and vice-chair have joined the Trust Board. Working alongside the Head Teachers of all the schools, the Trust is developing capacity - identifying talent and developing the most appropriate education and business strand structure (short, medium and longer term) to meet the needs of our schools in Calderdale and Kirklees;
- Early Spring term 2020 – recruitment process for agreed positions in the Trust which will include a CEO.



**Parents questions received
by Friday 11th October.**



Parent Questions

- Will the school need to change its name?
- Will the Admissions Policy remain the same?
- Will parents of primary children still have a choice of which secondary school they send their children to?
- Will school hours, holidays or uniforms change?
- Will the staff stay the same?
- Will there be changes to Nursery provision?



Parent Questions

- Will more schools continue to join after these 13?
- Will the school performance level go down?
- Will the school lose its OFSTED rating?
- Is there a lead school?
- What will the leadership structure look like?
- How will funding be split across the schools, will “poorer” schools get more funding?



Parent Questions

- How will joining a trust with an inadequate school impact on standards at St Patrick's?
- Will there be changes made to the curriculum?
- How will the trust quality assure the school as there has been no OFSTED inspection for a number of years?
- Will the governance of the school change?



