

---

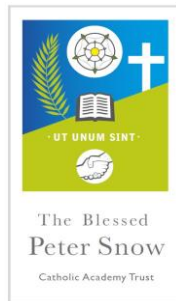
# Catholic Academy Trust



## Blessed Peter Snow

---

Our Growing Family of Schools  
Our Trust



---

## What is a Catholic Multi-Academy Trust?

- A Catholic Multi Academy Trust is simply a number of Catholic Academies who agree to work together within an overarching Trust Body.
  - The Bishop has asked all schools in the Diocese to become Academies and join their designated Trusts.
  - The Diocesan Officers have determined the groupings to avoid any school being left isolated.
-

---

# Catholic Academy Trusts

- Formally group schools under one legal organisation – the Catholic Academy Trust
  - They are independent state schools responsible to the Bishop and Secretary of State for Education – **as now**
  - Local Authorities are responsible for co-ordinated admissions, safeguarding and SEN – **as now**
  - Our partnership has a shared vision for Catholic Academy Trust schools whilst retaining each school's individual characteristics and ethos
-

# The Landscape 2018-2019

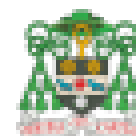
- **Bishop Konstant Catholic Academy Trust**

St Joseph's at Pontefract, Castleford, Moorthorpe, Sacred Heart Hemsworth, St Benedicts, St Ignatius, St Austin, Holy Family & St Michael, English Martyrs, St John's Normanton, St Thomas a Becket, St Wilfrid's,



- **Bishop Wheeler Catholic Academy Trust**

St Joseph's at Otley, Pudsey, Harrogate, Ss Peter & Paul, Sacred Heart Ilkley, St Mary's Horsforth, St Mary's Knaresborough, St Mary's Menston, St Stephen's, Holy Name,



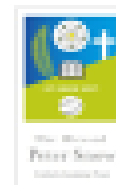
- **Blessed Christopher Wharton Catholic Academy Trust**

St Anne's, Keighley; Our Lady of Victories, Keighley, St Walburga's, St John the Evangelist, St Winefride's, St Joseph's Keighley,



- **Blessed Peter Snow Catholic Academy Trust**

St Malachy's, Halifax; Sacred Heart, Sowerby Bridge; St John Fisher, Dewsbury



- **St Gregory the Great Catholic Academy Trust**

Christ the King, Bramley

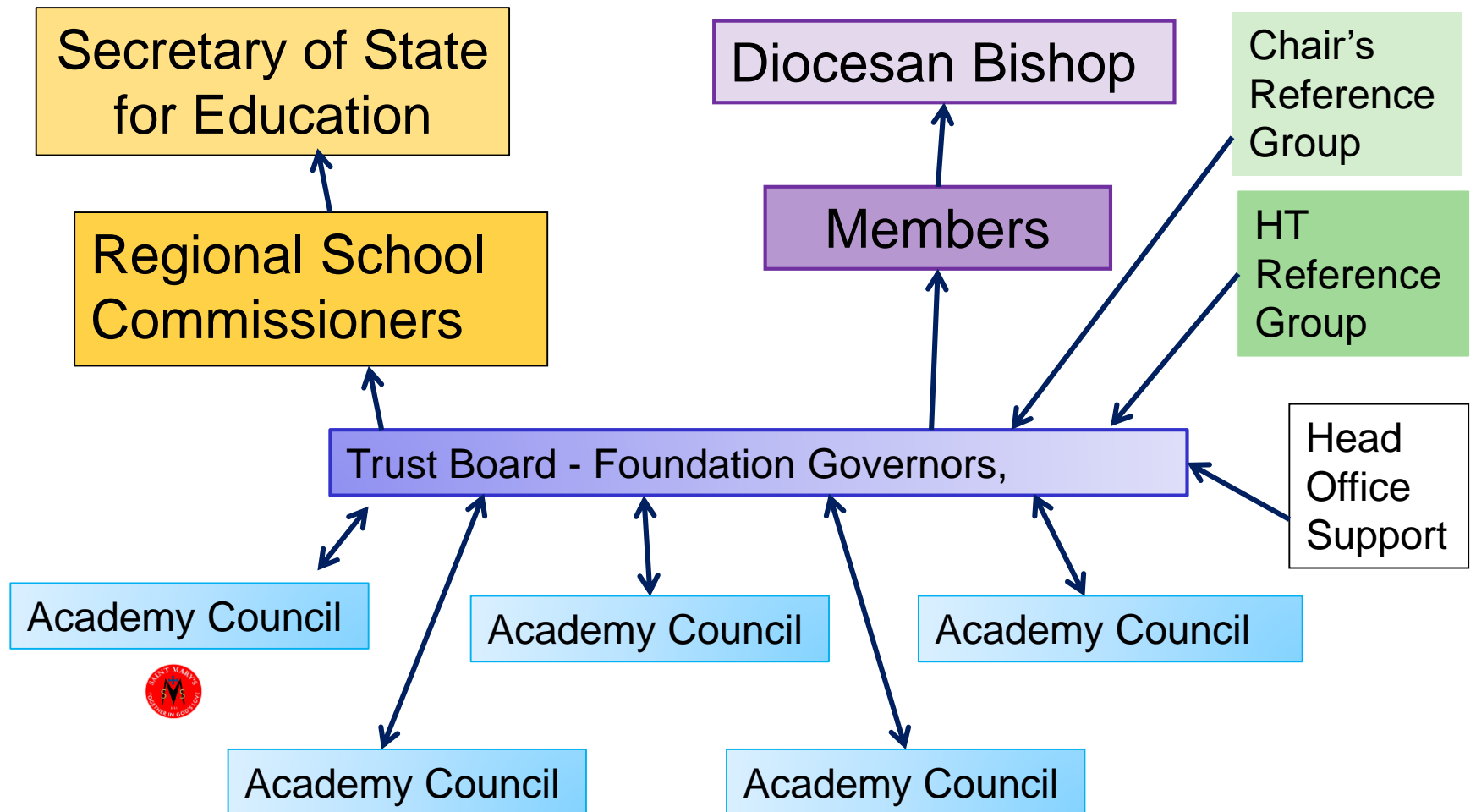




# Catholic MAT – Key Principles ....



# CAT Accountability



---

## ■ Blessed Peter Snow Catholic Academy Trust

- ❑ Sacred Heart, Sowerby Bridge
  - ❑ St Malachy's, Halifax
  - ❑ St John Fisher High School, Dewsbury
  - ❑ **Eventually 14 primary schools and 2 high schools which will enable a structure to facilitate and maximise opportunities**
  - ❑ **Us** – St Mary's Halifax
  - ❑ St Joseph's, Halifax
  - ❑ St Patrick's, Elland
  - ❑ St Joseph's, Brighouse
  - ❑ St Joseph's, Dewsbury
  - ❑ Holy Spirit, Heckmondwyke
  - ❑ St Paulinus, Dewsbury
  - ❑ St Mary's, Batley
  - ❑ St Patrick's, Birstall
  - ❑ All Saints Catholic College, Huddersfield
  - ❑ Our lady of Lourdes, Huddersfield
  - ❑ St Patrick's, Huddersfield
  - ❑ St Joseph's, Dalton
-



---

**Q: Why is it beneficial to become part of the CMAT? (Q: What changes do you envisage on joining the CMAT?)**

- Opportunities to share expertise, facilities and resources from specialist teachers across a trust that will benefit all;
  - Formalised school liaison allowing joint liaison and working together to provide the best quality of provision for the benefit of local children and young people;
  - Improved use of individual school's finances though economies of scale offered by the bulk acquisition of services and resources;
  - Applications for funding as a group of schools are likely have more success than by individual or small groups;
  - We can be creative in how we spend our funding to maximise the value for our schools eg: with extended services such as educational psychologists, speech and language;
  - We would no longer have to contribute 10% directly to capital projects;
  - A central team working for the Trust to enable Senior Leaders to focus more on teaching and learning and less on eg: project management or procurement;
  - All schools working on the same financial systems with an accountant supporting at least once a month;
  - Greater protection for individual schools in a rapidly changing political, financial and educational climate.
-

---

**Q: Will the schools still follow the national curriculum?**

A: Whilst they do have the freedom to diversify from this the NC usually forms the basis of the curriculum because of the end testing at the various key stages 1, 2 and 4

**Q: Will the children still have to do SATS?** *Yes – this is a DfE statutory requirement)*

**Q: Will standards/academic progress be monitored in the same way or will this change?**

A: They will still be monitored and we will still be required to report them to the Local Authority and the DfE.

Our current tracking systems may remain or we may agree a different tracking system across the Trust

We currently have a School Effectiveness Officer who meets with myself and the SLT regularly – this will still continue unless the Trust establish a team of officers that work across the Trust. This would have lots of benefits.

**Q: Will there be a lead school?**

A: No there is no lead school in the Diocese CMATs. There is an administrative centre which is either in no schools at all or in a school that has the office space. Our trust Board are currently looking for an office space separate from any school.

---

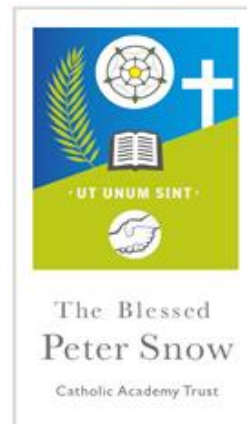
---

**Q: Will the Uniform have to change? Will signage be the same?**

There are no expectations for schools to change their uniforms.

The signage may have the addition of the BPSMAT logo placed on it, alongside our existing much loved logo but this is not a requirement initially and in any case it would not happen until we can afford to change the signs!

The school's headed paper may also have the subtle addition of the BPSMAT logo, but would be done to show that we have become part of a new family and we are proud of that fact.



---

The Blessed  
Peter Snow  
Catholic Academy Trust

---

**Q: Can St Mary's make independent decisions or do all the schools have to follow the same pathway?**

There will remain a significant degree of practical autonomy in all the Trust schools.

The scheme of delegation will map out the areas of responsibility for the CMAT and the Academy Councils (Governing Bodies) and the Headteachers.

Many of the day to day decisions we currently take will continue to be the case. Existing Academy schools say their parents hardly notice any changes in their experiences with the school.

Our Trust schools will still retain their individuality and will not be clones of each other.

**UNITY not UNIFORMITY**

---

# So what will it mean for our children, parents/carers?

On a day to day basis, the children and parents should not see any obvious difference.

Our Trust Board will be working very closely with all the Headteachers to ensure that our individual identities as a school are protected.

## For example - our children:

- will come to the same school building
- will work with the same staff
- will wear the same uniform
- will serve and live as a part of the same Parish
- will be part of their local community and take part in project links with other local schools.

Parents of children in other academy schools say they have not noticed any difference: ***Sacred Heart Sowerby Bridge, St Malachy's Ovenden, St Walburga's Bradford, St Winefride's Bradford, English Martyrs Wakefield.***

# Typical Timeline for a straightforward conversion (6 - 9mths)

Month 1

- Application to Diocese following resolution being passed

Month 3

- Approval from Diocesan Trustee
- Application to DfE, parental consultation, SI strategy

Month 4

- RSC/DfE approval and appoint project lead
- Due diligence, preparation of documents
- Land questionnaires, finance, TUPE

Month 6

- Confirmation - Commercial Transfer Agreement + land leases
- Responses to DfE questions
- Agreed documentation including leases signed by all parties

Month 7

- Details of Bank account to DfE/ESFA

Month 9

- Conversion and post conversion support

---

# Building Capacity in BPSCAT

- Aiming for all schools joining together to build the instant capacity that will enable the benefits of all being in the Trust to be established quickly.
  - Proposed date - September 2020.
-

---

**Further questions or comments?**

