

Welcome to our 'ATTENDANCE MATTERS' Newsletter

Good Attendance at school is linked to academic success, we are therefore asking for all parents /careers to support in ensuring that pupils achieve the highest possible attendance. You can do this by bringing you child to school **EVERY DAY** unless your child is **TOO ILL** to attend.

We have dedicated members of staff that support families who experience difficulties in ensuring their child attends school every day.

If you are experiencing any difficulties, please do not hesitate to contact **Mrs Elwell Tel 0121 568 6421**

Punctuality

Please ensure your child is inside the school gate for **8.45 a.m.** ready for prompt **8.55 a.m.** registration.

Arriving late is not only disruptive to your child's learning but also to the learning of others. Some Children feel embarrassed when they walk into the classroom late.

Dedicated staff are on both entrances and in the playground to greet you and your child into their class.

If your child arrives to school late the parent should bring them in to the school office and sign them in to school via the school inventory system.

So far this year 135 pupils have arrived late to school. Please support your child by ensuring they arrive at school on time

Attendance Procedures for 2019/2010

Absence Procedures

If your child is too ill to attend school, please take them to a Doctor and provide school with medical evidence. **We ask that you call the school: 0121 568 6421 between 7.30 -8.45 A.M every day that your child is absent. You can also report a child's absence via our school website.** As part of our robust safeguarding policy we have to be aware of pupils whereabouts daily, therefore should we not have any contact with parents either by telephone, in person or home visit, we have to request a safe and well check by the police and when necessary a referral to 'children missing education'.

Children may have minor illnesses such as coughs and colds, headaches, tummy aches. Although children may feel under the weather, they can often be well enough to attend school.

Please only keep your child at home if necessary.

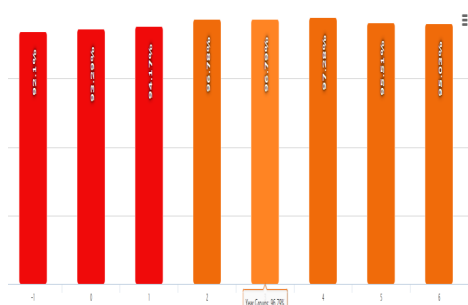
What the Law says

It is a parent's legal responsibility to ensure their child/children receives appropriate education. Failing to send your child to school regularly without good reason is a criminal offence.

During the last academic year there have been parents that have been taken to court due to concerns regarding poor attendance, This has resulted in large fines being issued. Parents have been issued with fines up to £600.00. There has also been a parent out one of our federated schools that received a custodial sentence due to their child's school attendance.

Attendance so far this academic year by year group.

Well done all of year 4 for excellent attendance so far this year.



Attendance for this year so far is 95.46%

Our whole school Attendance for 2018/2019 reached 95.39%

Holiday's during term time

We strongly advise that you do not book any holidays without speaking to school first. Parent/carers will be required to complete a 'Leave in Term Time' request. Only leave under exceptional circumstances will be authorised. ALL unauthorised holidays during term time WILL result in a fixed penalty notice. This costs £60 per parent, per child.

In the last academic year there was a total of 27 Fixed Penalty notices issued for holidays being taken during term time.

Emergency collection of your child

We understand at times that an emergency may occur throughout the day when you need to collect your child early, however we have a duty of care for every child and safeguarding procedures to follow. Should you child have an emergency appointment during the day, please call the school prior to collecting them and provide medical evidence where possible.

Where family emergencies occur, please consider that it may be within the interest of the child to have normality and routine and leave them in school until the end of the day. If in doubt, please call the school for advice. **Important - If you are not able to collect your child and have arranged for someone else to collect you must inform the school.**

Attendance Rewards

We would like to announce the opening of our '**Attendance Shop**'. The good news is it is open throughout the school from Reception right through to year 6. for every week with 100% attendance and no late arrivals the child will earn a reward point. At the beginning of the new half term the children can visit our shop and cash their reward in for goods. Dependant on how many points they have received, determines which gift they can choose. We have a selection of items ranging from stationary, bats & balls, gliders, Slinkysthe list is endless of what we are offering.

We would like to congratulate the many parents who make sure their children attend school regularly and are therefore benefiting fully from their education opportunity.

Please Do not let your child miss out on our next celebration event.

The school target for attendance is 97% for the whole school and 100% pupil Attendance. This then will give your child the best opportunities throughout their education.

Walsall's Education Welfare Service support with monitoring attendance, children with attendance that falls below 92% will be referred to this service and medical evidence will be required for all absence from school.