

## Lower Key Stage 2 Newsletter Spring term 1

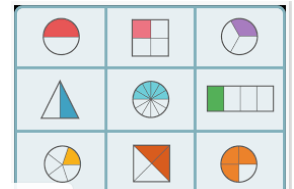
Dear Parents and Carers,

Happy New Year! Welcome back to a brand new year and term. We would like to thank you for all of the gifts we received at Christmas and your continued support.

Our Learning Journey for this term is 'Wonderful Worlds'. Please take the time to look through our learning journey leaflet for further ideas in how you can support your child at home. We are certainly looking forward to the term ahead!



**Year 3 and 4 Maths:** We will be studying multiplication and division. Then year 3 will cover money and statistics. Year 4 will focus on Area and Fractions. At home it would be great if you could practice solving problems involving multiplication and



division. Please see the teacher if you would like some support of which websites can support this. In June, year 4 will be completing a National Times tables test so please practice these at home. Our year 3 children have also been busy practicing their tables, remember you can practice your tables anywhere, in the car, before you go to bed, even whilst you are in the bath! A great link to use is <https://www.timestables.co.uk/multiplication-tables-check/>

**Year 3 and 4 English:** In English, we will be using the text 'Grimm Tales' by Philip Pullman. This book is based on traditional Fairy-Tales but with a twist. The children will be reflecting, comparing and reading different tales. You can help your child at home by reading fairy tales to them. They will also be performing and retelling these stories in front of an audience to support and encourage their confidence. At the end of the term we will be writing our own Grimm Tale and create our own characters, story and morals. Encourage your child to write their own stories at home using their imagination and real-life experiences.

**Science:** This half term we will be looking at rocks and soils. This will help us when designing and making our garden for Alice next half term.

**Year 3 and 4 Homework** (handed out on a Friday) it is important that your child practises the spellings at home as they will be tested weekly.

**Reading:** Your child will bring home, school reading books (fiction and nonfiction). Reading is a life skill and children need to feel that we value them as readers. We would therefore ask parents to listen to their children read regularly at home and write a comment in their reading record at least once a week. This could be any adult, uncle, aunty, grandparents or older siblings. Your feedback on how they are reading at home is valuable to us.



**Bug Club:** As a school we subscribe to an online resource which gives your child access to hundreds of e-books. If you have trouble logging in, please speak to your class teacher or Mrs Hatcher



Don't forget to log onto Maths factor

**What you can do to help:** Please practice all timetables up to 12 as well as the division facts e.g.  $5 \times 4 = 20$   $20 \div 5 = 4$   $20 \div 4 = 5$ . For example, if you know that  $9 \times 10 = 90$ , then 90 divided by 10 equals 9!

### **Year 3 Statutory Spellings**

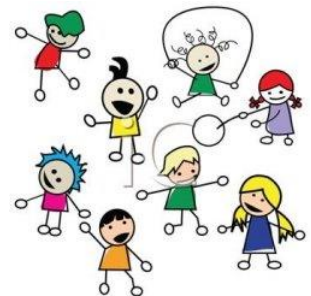
answer, build, caught, circle, early, earth, fruit, group, heard, heart, height, island, learn, minute, often, woman/women, address, appear, arrive, breath, breathe, disappear, guard, guide, history, imagine, increase, important, interest, question, recent, reign, remember, centre, century, certain, consider, enough, famous, forward(s), grammar, length, notice, strange, strength, though, although, thought, through.

### **Year 4 Statutory Spellings**

complete, decide, describe, different, difficult, February, library, naughty, opposite, ordinary, perhaps, popular, probably, regular, suppose, surprise, various, exercise, experience, experiment, extreme, favourite, mention, occasion(ally), position, possess(ion), possible, potatoes, pressure, promise, purpose, quarter, sentence, therefore, accident(ally), actual(ly), believe, bicycle, busy, business, calendar, continue, eight, eighth, knowledge, material, medicine, natural, particular, peculiar, separate, special, straight, weight.

**Uniform reminders:** Children are not allowed to wear nail polish in schools. We have also noticed a few children not wearing suitable footwear at school. Children should be wearing black shoes or plain black trainers (no logos).

**Year 3 and 4 P.E.** P.E. will be on a Monday and Friday for Beech class. Year 3's (Ash and Aspen) P.E will be on a Monday and Wednesday. In year 3 and 4 children are expected to take their own earrings off for P.E and put them away in their own tray. Also, please check that your child's plimsolls fit them, a few children have said that they are waiting to grow into them!



**Attendance:** It is crucial that children attend school every day, if you are unsure please see link for advice. <https://basildonandbrentwoodccg.nhs.uk/about-us/publications/health-information-leaflets/1763-advice-on-childhood-illnesses-poster/file> For most illness the school is able to administer calpol to help them on the road to recovery, so, if they are 'poorly' or 'unwell', please do send them into school. If you have any concerns over your child's attendance, please do speak to Mrs Hatcher (attendance officer)

**Home Learning Project:** Can your child create their own interpretation of a wonderful world in a shoe box? What type of land is there? What kind of creatures live there? Spend time with your child discussing and gathering ideas about what their interpretation of a 'Wonderful World' could be. It can be as simple or extravagant as you like. We will display the projects in the classroom and share with the classes what each child has made.

**Deadline: Monday 10<sup>th</sup> February**

Please do remember our doors are always open if you have any concerns, questions or even positive comments to share.

Miss Collin, Miss Marbe and Miss Usher