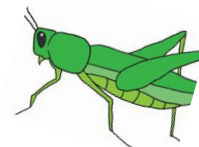


**Jolesfield CE Primary School**  
**Information for Parents and Carers**  
**Weekly Overview**



**Year group: Year 4**

**Date w/c: 3.2.2020**

Area of learning	What we will be learning
<b>English</b>	<p><b>Reading</b> – We are continuing to have a look at the text about How a Lighthouse Works. We are going to be exploring explanation texts and magpie some ideas for our very own texts.</p> <p><b>Writing</b> – We are going to learn about how we can create explanation texts. We are going to start by discussing different explanation texts and what we can learn from the structure and type of vocabulary used. We will then be drafting ideas of the vocabulary we can use for an explanation text about how a circuit works. Our grammar focus will be the present tense and how this is used as part of explanation texts.</p>
<b>Spellings</b>	<p>Group 1 - Chef, shop, sure, sugar and circle Group 2 - Creation, radiation, dedication, ventilation and vibration Spelling test this Friday for the above words - your child should know which set of spellings they are focusing on. New words will be sent home on Friday.</p>
<b>Maths</b>	<p>In Maths this week we are going to be learning about dividing 2 digit numbers by 1 digit. We will be using part part whole models to support this. We will also be learning about numbers which leave us with a remainder. Building on 2 digits, we will then be dividing 3 digit numbers by 1 digit. NEXT WEEK...we will be moving on to fractions.</p>
<b>Topic</b>	<p>In Science we are going to continue focusing on electricity - we will be using all of our learning in a Design and Technology project next week.</p> <p>If you have any clean and safe recycling that could be turned into a battery powered light please send this into school. We have been saving some already, but it's always better to be safe than sorry.</p>
<b>Homework</b>	<p>Homework books will be collected on Tuesday. New homework sent home on Wednesday.</p>
<b>Any Other Information</b>	

*Please note this is a basic overview of the planning for this week. It is impossible to cover in this outline all the learning that takes place during a week! We also believe in listening to your children and responding to the children's interests and ideas therefore all our planning is **very** flexible. Please note some of the learning will take place across more than one week and during some weeks the learning focus may not cover all curriculum areas.*