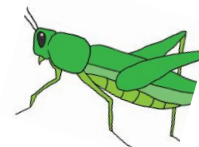
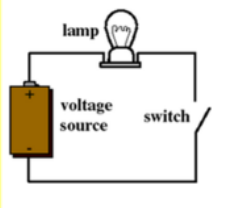


**Jolesfield CE Primary School**  
**Information for Parents and Carers**  
**Weekly Overview**



Year group: Year 4

Date w/c: 10.2.2020

Area of learning	What we will be learning
<p style="text-align: center;"><b>English</b></p> 	<p><b>Reading</b> – We are continuing to look at explanation texts and the text How a Lighthouse Works. Following on from our own explanation texts, we are going to discuss a peers text and talk about the language choices. This will support us in creating an explanation text about our DT product.</p> <p><b>Writing</b> – This week our writing is going to be based around our DT product. We are going to apply our learning about explanation texts to our product. We are going to be explaining how the circuit in our product is working so that the light works. These will be sent home alongside the product.</p>
<p style="text-align: center;"><b>Spellings</b></p>	<p>Group 1 - Kindly, sweetly, quickly, spotless and homeless Group 2 - Submerge, subheading, submarine, superman and supervise Spelling test this Friday for the above words - your child should know which set of spellings they are focusing on. New words will be sent home on Friday.</p>
<p style="text-align: center;"><b>Maths</b></p>	<p>Last week in maths we found division a bit tricky. We finally felt more confident on Friday so the start of this week we are going to consolidate division. We will then be moving on to fractions. Our first lesson about fractions will be answering the question: What is a fraction? We will then be recognising equivalent fractions.</p>
<p style="text-align: center;"><b>Topic</b></p>	<p>In Science this week we are going to be exploring making switches. We will then be using all of our science learning to support the designing and making of a battery powered light product.</p>
<p style="text-align: center;"><b>Homework</b></p>	<p>Homework books will be collected on Tuesday. Homework for the half term will be asking someone at home to complete their evaluation form for their product. This form will be sent home on Friday. Homework books will be kept safe in school over the half term week.</p>
<p style="text-align: center;"><b>Any Other Information</b></p>	<p>Don't forget - Monday 24th February is an INSET day.</p> <p>Our whole school DT project will begin on Tuesday 25th February. We have been tasked with creating a model of Partridge Green. Years 3 and 4 have been asked to create the buildings. As we are focusing on the buildings, we would like to go on a walk around the village to make some close observations for our designing. We need some volunteers to walk with us. We aim to leave school on Tuesday at 9:30. This will give us time to introduce to the classes the focus for our project. If you can walk with us please let us know.</p> <p>We also need walkers to help get us to our Ash Wednesday Church Service on 26th February. If you can help with this walk please let us know.</p>

*Please note this is a basic overview of the planning for this week. It is impossible to cover in this outline all the learning that takes place during a week! We also believe in listening to your children and responding to the children's interests and ideas therefore all our planning is **very** flexible. Please note some of the learning will take place across more than one week and during some weeks the learning focus may not cover all curriculum areas.*