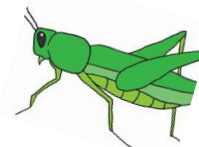


Jolesfield CE Primary School
Information for Parents and Carers
Weekly Overview



Year group: Year 4

Date w/c: 25.2.2020

Area of learning	What we will be learning
DT Week	<p>This week we are off timetable to focus on our whole school DT project - making a model village of Partridge Green. Years 3 and 4 have been asked to create the buildings for the village. We are focusing on the construction skills of DT. This will include measuring and marking wood as well as using a glue gun under close supervision. We will begin by researching the buildings that are in PG before working in small groups to plan our building. The construction will then begin by making a frame from wood. This frame will then be added to as the week progresses.</p> <p>Writing – Our writing is going to be based around our DT project. We are building the houses of Partridge Green and so we are going to be writing about Partridge Green. The children will be choosing what they write about (who lives in PG, history of PG, what makes PG a community). They will also be choosing how to present their information (a poster, an informative map or a leaflet). These pieces of writing will be presented alongside the finished whole school model village.</p>
Spellings	<p>Group 1 - Believe, group, height, continue, appear and breath Group 2 - Girls', boys', teachers', parents' and babies'</p> <p>Spelling test this Friday for the above words - your child should know which set of spellings they are focusing on. New words will be sent home on Friday.</p>
Homework	<p>Homework books with new homework will be sent home this week. Please remember to send back your evaluation forms for your battery operated lights.</p>
Any Other Information	<p>NOTICE - our Ash Wednesday church visit is on Wednesday 26th February at 2:30pm. We will be leaving school shortly after 2:00 and will be back for the usual end of school finish. Let us know if you are able to walk with us to church. Thank you in advance.</p>

*Please note this is a basic overview of the planning for this week. It is impossible to cover in this outline all the learning that takes place during a week! We also believe in listening to your children and responding to the children's interests and ideas therefore all our planning is **very** flexible. Please note some of the learning will take place across more than one week and during some weeks the learning focus may not cover all curriculum areas.*