



# Headteacher's Newsletter

**February 2020** ISSUE 2

Dear Parents and Carers,

Welcome back from the half term break. I hope all our families had an enjoyable break.

We are looking forward to lighter evenings and the exciting events planned for the rest of this term.

## Important Dates

**Friday 3rd April:** Term Ends at 12:30pm

**Monday 20th April:** Children return to school at 8:50am

**Thursday 7th May:** School closed for the elections. The Junior school will be open as usual. Junior school children must still attend on this day.

**Friday 8th May:** School closed for Spring Bank holiday



One of our School Values is SAFE.

We all have the right to be safe. We have the responsibility to keep ourselves and others safe. We all play a part in following the school's strong safeguarding procedures to ensure that everyone is safe. We have recently updated our Child Protection Policy. A copy of this policy can be found on our website: <https://www.whitehall-inf.hillingdon.sch.uk/key-information/links-to-policies>

Please come along to our Coffee morning about our policies on **Friday 13th March at 9am in the hall** to find out more information on our recently updated policies.

## Book week

Next week is National Book Week where the love of reading is celebrated.

All children in Reception, Year 1 and Year 2 are taking part in a sponsored readathon. Please remember to return your child's completed sponsorship form and money by **Monday 2nd March**.

We will be celebrating **World Book Day** on **Thursday 5th March**. On this day, children can come to school dressed as a book character. A letter has been sent home with ideas for some easy book character outfits. Please ensure your child wears appropriate clothing and school shoes or trainers only please.

On **Friday 6th March**, we are holding a Family Reading Morning. Please come in to your child's class at 8:40am until 8:55am to read a book with them.



## Coffee Mornings - Every Friday 9am until 10am.

This is a great opportunity to ask for advice and meet other parents. If there is anything you would like to talk about or to meet other parents, please do come along. To attend, please wait outside Elm class, which is off the big playground, once you have dropped your child to their class.



## Sports Relief

We will be celebrating Sports Relief on **Friday 13th March**.

The money raised through Sport Relief helps vulnerable people across the UK and the World, live happier, healthier and safer lives. On this day, children can come to school in sports clothes for a donation of £1. Sensible clothing and shoes only please.



**Thursday 5th March Beech Class at 9am**

**Thursday 12th March Spruce Class at 9am**

**Thursday 19th March Birch Class at 9am**

Parents or carers of the class are welcome to attend. Please ensure that you arrive on time. Also, please do not eat, talk or use your phone during the assemblies as this can distract the children.

## Reception school trips

Letters have been sent home regarding the Reception school trips. The first trip takes place on Tuesday 3rd March going to the Beck theatre to see a play called Zog. Please ensure you return your child's slip and payment no later than the end of the school day on **Friday 28th February**. Please note that if we do not receive sufficient contributions, we may have to cancel the trip.

## 'Family' homework

We sent out 'Family' homework before half term to design artwork based on the Fourth Plinth in Trafalgar square as part of the Mayor of London's competition. Thank you to everyone who has handed in their child's entry. Please remember all entries should be brought in to school by **Friday 28th February**. For a reminder of the details of this competition, please visit <https://www.whitehall-inf.hillingdon.sch.uk/parents/noticeboard>



## Applying for Nursery



Children born between 1st September 2016 and 31st August 2017 are eligible to start our school Nursery in September 2020. If you or someone you know would like to apply for a Nursery place, please collect an application form from the main school office as soon as possible.

## Parent Workshops



Thank you to everyone who attended the Read, Write, Inc and the Year 2 End of Year Assessments parent workshops. Information from all workshops can be found on our website: <https://www.whitehall-inf.hillingdon.sch.uk/parents/noticeboard>

## Curriculum Overviews

The curriculum overview for this half term for your child's year group can be found on our website: <https://www.whitehall-inf.hillingdon.sch.uk/curriculum>

Well done to the Parents' Association for raising over £130 at their recent bake sale, Thank you to everyone who supported them with this.

## Attendance

As we progress through the school year, it is very important that your child's attendance is at least 96%. Attendance will be monitored throughout the year and letters will be sent home for children with low attendance. Please remember to check the school term dates (<https://www.whitehall-inf.hillingdon.sch.uk/key-information/term-dates>) and do not take holidays during the term time.

## Punctuality

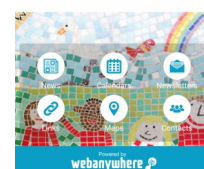
We want all children to start their school day in the best possible way. Please remember to check your journey before you travel to ensure you leave enough time to get to school. All children who arrive after the bell (at 8:50am) will be marked as late. All class room doors will close at this time, and children will need to go through the main school office to be signed in.

## Have you downloaded our App?

Access information such as the notices, calendar, contacts and newsletters with ease! You will be also able to receive notifications of any upcoming events.

To download, visit the Google App store or the Apple App store and search for 'School Jotter'. Once downloaded, select Whitehall Infant School from the dropdown list.

**Remember to check our website - we are frequently updating it with new information!**



## Pancake Day

We recently celebrated pancake day! Pancake day (also known as Shrove Tuesday) is the beginning of the 40 days leading into Easter. Lent is traditionally a time of fasting and sacrifice, and often Christians give things up - such as chocolate.

Thank you to the Parents' Association for spending the day in school, providing pancakes for every child!



## RNLI Workshop

The Year 1 children recently had a visit from the Royal National Lifeboat Institute. They talked to the children about Hero's and Heroines, in particular, Grace Darling who the children will be learning soon.



## Lunch Menu

This is available to view on our website:

<https://www.whitehall-inf.hillingdon.sch.uk/parents/school-dinners>

# Diary Dates

Please note that these dates are subject to change. More information will be sent out regarding each event.

W/c	2 <sup>nd</sup>	March	Sponsored Readathon	Reception, Year 1 & Year 2
Tuesday	3 <sup>rd</sup>	March	Reception visit to Beck Theatre	
Thursday	5 <sup>th</sup>	March	World Book Day	Dress up day
Friday	6 <sup>th</sup>	March	Family Reading morning	8:40am - 8:55am in classrooms
Friday	6 <sup>th</sup>	March	Coffee morning for parents	9-10am in Elm class
Thursday	12 <sup>th</sup>	March	Spruce assembly	9am in the hall
Friday	13 <sup>th</sup>	March	Sports Relief	Dress Up Day - sports clothes
Friday	13 <sup>th</sup>	March	Coffee morning on policies	9-10am in the hall
Tuesday	17 <sup>th</sup>	March	Parents Evening	3:30-5pm
Tuesday	17 <sup>th</sup>	March	Parent lunch taster	Year 2
Wednesday	18 <sup>th</sup>	March	Parent lunch taster	Year 1
Thursday	19 <sup>th</sup>	March	Parent lunch taster	Reception
Thursday	19 <sup>th</sup>	March	Birch Class assembly	9am in the hall
Thursday	19 <sup>th</sup>	March	Parents Evening	3:30-7pm
Friday	20 <sup>th</sup>	March	Coffee morning for parents	9-10am in Elm class
Monday	23 <sup>rd</sup>	March	International performance -Year 2	9:10am & 2:40pm in the hall
Tuesday	24 <sup>th</sup>	March	International performance -Year 1	9:10am & 2:40pm in the hall
Wednesday	25 <sup>th</sup>	March	International performance -Rec	9:10am & 2:40pm in the hall
Friday	27 <sup>th</sup>	March	Family Reading morning	8:40am in classrooms
Friday	27 <sup>th</sup>	March	Coffee morning for parents	9-10am in Elm class
Tuesday	30 <sup>th</sup>	March	Tropical Zoo visit	Nursery
Friday	3 <sup>rd</sup>	April	TERM ENDS	12:30pm

# Coronavirus

Please refer to the letter that was sent home on Wednesday.

**There's currently no cause for concern at Whitehall Infant School, but we'll keep you informed about any developments and ensure we are doing all that we can to stop the spread of any virus.** Please assist us with this by encouraging your children to wash their hands regularly and follow the below advice.

## How can you stop viruses spreading?

### If you need to cough or sneeze



**Catch it**  
with a tissue



**Bin it**



**Kill it**  
by washing your  
hands with soap &  
water or hand  
sanitiser

### You should wash hands with soap & water or hand sanitiser



**After breaks  
& sport  
activities**



**Before  
cooking  
& eating**



**SCHOOL  
ETC.**  
On arrival at  
any childcare  
or educational  
setting



**After using  
the toilet**



**Before  
leaving  
home**



Try not to touch your  
eyes, nose, and mouth  
with unwashed hands



Do not share items that come  
into contact with your mouth  
such as cups & bottles



If unwell do not share  
items such as bedding,  
dishes, pencils & towels

## Prevent the spread of infection

Make sure you and your children follow these general principles to prevent spreading any virus:

- ◆ Wash your hands often - with soap and water for at least 20 seconds, or an alcohol-based hand sanitiser
- ◆ Avoid touching your eyes, nose, and mouth with unwashed hands
- ◆ Avoid close contact with people who are sick
- ◆ If you feel unwell, stay at home and don't attend work or school
- ◆ Cover your cough or sneeze with a tissue, then throw the tissue in a bin
- ◆ Clean and disinfect frequently touched objects and surfaces in the home

**If you're worried about your symptoms, please call  
NHS 111 - don't go directly to your GP or other  
healthcare environment**