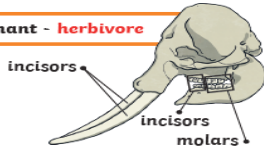


Animals, including humans

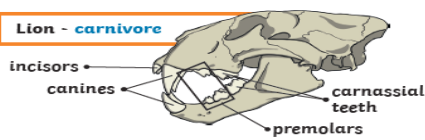
Key Knowledge

The teeth of an animal are designed to eat different foods depending on the diet of the animal. Examples of a **herbivore**, a **carnivore** and an **omnivore** skull:

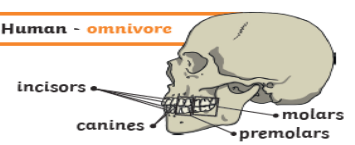
Elephant - herbivore



Lion - carnivore

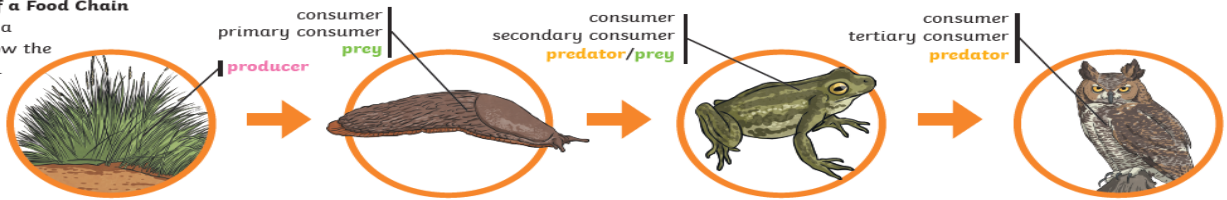


Human - omnivore



An Example of a Food Chain

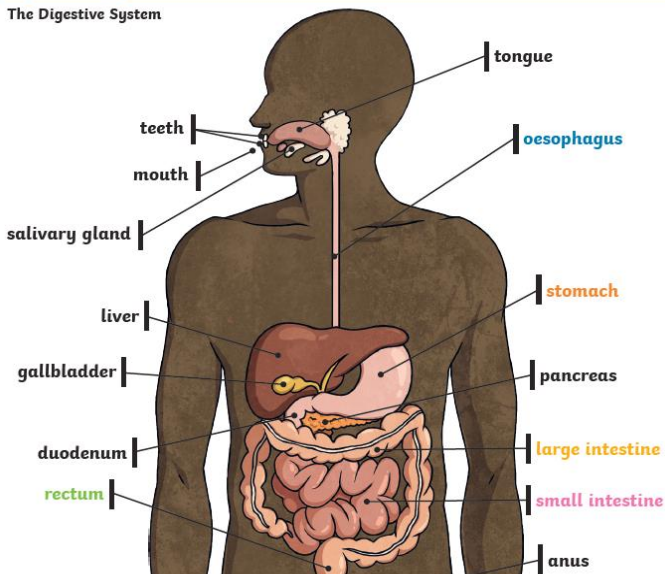
The arrows in a food chain show the flow of energy.



Functions of the basic parts of the digestive system

Key Knowledge

The Digestive System

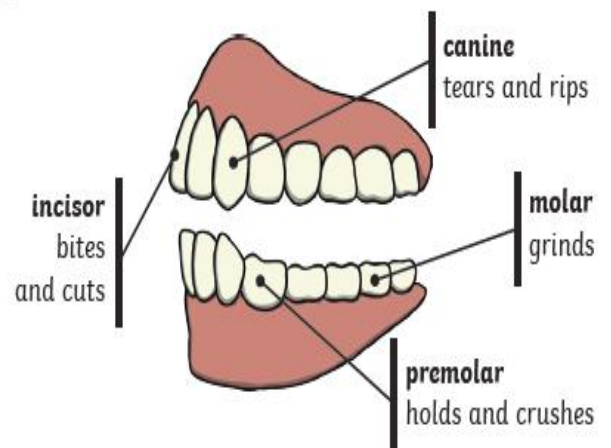


Key Vocabulary

herbivore	An animal that eats plants.
carnivore	An animal that feeds on other animals.
omnivore	An animal that eats plants and animals.
producer	A plant that produces its own food.
predator	An animal that hunts and eats other animals.
prey	An animal that gets hunted and eaten by another animal.

Identify different types of teeth in humans and their functions

Human Teeth and Their Functions



Some people have wisdom teeth but they have no function now.

Key Vocabulary

digest	Break down food so it can be used by the body.
oesophagus	A muscular tube which moves food from the mouth to the stomach.
stomach	An organ in the digestive system where food is broken down with stomach acid and by being churned around.
small intestine	Part of the intestine where nutrients are absorbed into the body.
large intestine	Part of the intestine where water is absorbed from remaining waste food. Stools are formed in the large intestine.
rectum	Part of the digestive system where stools are stored before leaving the body through the anus.