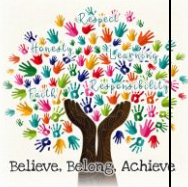


Middleton St Mary's Newsletter 1



Moor Flatts Road, Leeds. LS10 3SW. Tel: 01132 717206 www.middletonstmarys.co.uk

Monday 28th September 2020

Welcome Back

We know that the last six months have been very different and somewhat challenging for everyone. We hope that you and your families have been safe. We have tried to keep in touch with our families throughout this period, but if there is something that you need to inform us about, please phone the school or email enquiries@msmleeds.co.uk and someone will aim to get back to you the same day. We are now entering into week four of returning to school and so are able to review the safety measures and procedures that we have put in place for your child's return.

School Street - Moor Flatts Road Closed

The closure of Moor Flatts Road to vehicles apart from residents and those with disability badges has been working very well, especially in the mornings. However, this week, the afterschool procedures have not worked so well. A number of parents who are parking on Town Street are blocking residents drives and one has been abusive to them when they have asked them to move. This is not acceptable. A few parents are also parking where the Crossing Patrol stops the traffic to cross our children safely across the road. Again, this is not acceptable. The Road Safety Team and Influencing Travel Behaviour Team have been notified. Please consider your parking.

Times and entering School

The staggered start times are generally working well. Staff have requested that Year 5 and 6 children arrive 8.20-8.30am each morning rather than 8.40am to allow lessons to start on time after their Early Bird Maths session. Some children in Year 4 have been invited to a booster club, these children will enter via the main office each morning.

| | School Opens | Registration Closes | Collection Time | Place to drop off/collect |
|----------------|--------------|---------------------|------------------------------|---------------------------|
| Breakfast Club | 7.30am | 8.20am | | Main office |
| Year 6 | 8.20am | 8.40am | 2.40pm | Main office gate |
| Year 5 | 8.20am | 8.40am | 2.40pm | Y1/Y2 playground gate |
| Nursery | 8.20am | 8.40am | 3pm gates open 2.55pm | Nursery gate |
| Reception | 8.30am | 8.50am | 3pm | Nursery gate |
| Year 2 | 8.30am | 8.50am | 3pm | Y1/2 playground gate |
| Year 1 | 8.40am | 9.00am | 3.10pm | Y1/2 playground gate |
| Year 3 | 8.40am | 9.00am | 3.10pm | Main office |
| Year 4 | 8.40am | 9.00am | 3.10pm | Main office |

If your child is unwell and cannot attend school, please phone school stating the reason for their absence before 8.30am, leaving a voicemail if necessary. If you have not been in touch with school, it is part of our procedure to visit your home. This is part of our safeguarding procedures.

If your child has any one of the following Covid-19 symptoms:

YOU SHOULD BOOK A TEST IF YOUR CHILD HAS:

| | | | | |
|--|-----------|--|-----------|---|
| a high temperature. | OR | a new continuous cough. | OR | a loss of or change to your sense of smell or taste. |
| This means they feel hot to touch on their chest or back (you do not need to measure their temperature). | | This means coughing a lot for more than an hour, or three or more episodes in 24 hours (if they usually have a cough it may be worse than usual) | | This means they've noticed they cannot smell or taste anything, or things smell or taste different to normal. |

You MUST book a swab test for them online. Go to www.gov.uk/coronavirus, the test must be done in the first 5 days of having symptoms. You and your whole household will be required to isolate for 14 days from the start of the symptom or until a test result comes back negative. This must be seen by the school office, Head or Deputy Headteachers (Mrs Marston or Mrs Aston) before your child can come back to school. A screen shot can be sent to the school facebook page via messenger or emailed to enquiries@msmleeds.co.uk. Thank you for your cooperation.

What to do if Someone in your house has Symptoms:

If someone other than your child at home has symptoms, your child must stay off school for 14 days. The whole household must isolate. A test can be arranged for the person with symptoms and if it comes back negative, children can return to school. Proof of a negative test must be provided to school on return.

What to do if you are contacted by NHS Test and Trace.

If NHS Test and Trace contact you to say that your child had been in contact with a positive case of coronavirus, you must keep the child at home for 14 days, even if they feel well. You can arrange for a test if you feel unwell, but even if this test comes back negative, your child must not return to school for 14 days, as the virus takes time to develop. If someone else at home has been in contact with a positive case, the current guidelines are that the rest of the household does not need to isolate, unless they are unwell or receive a positive test.

End of the day

We have staggered exit from school times as well as staggered entry times. Please be aware that Year 3 and 4 are not late out of school at 3.10pm. This is their allocated time as they start later than the other phases/bubbles (the old school finishing time). **We are asking that parents do not arrive early to collect their children. Often, parents are waiting on Moor Flatts Road for 20-30 minutes before their child's leaving time. This is causing too much congestion on Moor Flatts Road AND parents ARE NOT social distancing. If you need to speak to your child's teacher, this is not the time to do this, please phone the school and they will call you back.**

Please put our children first.

Mrs N Wood, Headteacher.



Every child in Key Stage 2 has a log-in to TT Rockstars, this is glued in their reading diary along with their Accelerated Reader log-in. Remember to keep visiting TT Rockstars to improve your child's times tables skills!

Parent Governor Vacancy

We are currently looking for a new Parent Governor and would be delighted to hear from anyone who has:

- an interest in the performance of the school.
- a desire to contribute to and represent the community.
- an open and enquiring mind
- the ability to look at issues objectively
- the confidence to ask questions and join in debate.
- a willingness to listen and make informed judgements
- the ability to work well with others
- time to spare
- a child or children currently attending the school

If you match the above description, you may be the very person to become a Governor at Middleton St Mary's CE (VC) Primary School.

What is the Governing Board's Role?

The Governing Board of our school plays a key role in:

- setting targets for raising standards of educational achievement
- monitoring progress towards meeting these targets
- supporting and challenging the performance of the school
- deciding policy and future development plans

As well as attending meetings governors are also asked to look at specific areas of the school's work in more detail. To help support governors, everyone has access to further training to help build on existing skills or to develop new ones.

If you are interested, please complete the attached application form with a brief description about yourself and why you would like to join the governing board, and return this to Mrs N Wood, Headteacher at enquiries@msmleeds.co.uk before Friday 2nd October 2020. Depending on the number of applications there may be an election process, which will be advised in due course.