



Irthlingborough Nursery and Infant School

Issue 10 January 2021

Into 2021

It has been a very difficult start to the New Year for all of us. The year started with hearing the sad news that our beloved teaching assistant, Mrs Powell had died after a short time in hospital. We are all devastated but learning to take comfort from the happy memories we all have of Mrs Powell. We will be closing the school on Friday afternoon to allow teachers to take time for private reflection as due to the current Covid 19 situation, we are not all able to attend the funeral. We will be wearing something pink, as she loved pink and bright colours, wherever we are, but teachers will not engage in either classroom learning or remote teaching on the afternoon of 22nd January as school closes at 12pm and nursery at 11.30am.



AND INTO SCHOOL LOCKDOWN NUMBER TWO!

This wasn't the start we wanted with some of our children in school and some learning from home but here we are again! Teachers have been amazing ensuring that learning was ready for children in school and at home from day one. We have quickly moved to the live learning sessions through Microsoft Teams, which are recorded and can be viewed later if the live time clashes with another sibling's sessions or the pace of the lesson was too fast for your child, you can just re-watch and pause the sections you need to. We have looked through the survey and we are trying to support those children who do not have a tablet or laptop. Unfortunately, as an Infant school we haven't had an allocation of laptops or tablets from the DFE. We will however do our very best to support families at home. Some children have been able to share an older sibling's laptop or Chromebook.

We know that being the teacher, mum or dad, nurse and carer at home can be difficult when there is no daily school, so we hope that the live lessons and timetables will help add a structure to your day.

Our nursery is open as usual, as directed by government but teachers are still providing home learning too for the parents who are keeping their children at home.

School and nursery are closed on the afternoon of Friday 22nd January in honour of Mrs Sharon Powell, for private reflection. Nursery will close as 11.30am and main school 12pm.

Teacher	Contact Email
Mrs Luke- Nursery Team Leader	bluegroup@iflt.org.uk
Mrs Dodds	yellowgroup@iflt.org.uk
Miss Knibb	greengroup@iflt.org.uk
Mrs Hurley- Reception Team Leader	monkeyclass@iflt.org.uk
Mrs Steventon and Miss Chapman- Deputy head	meerkatclass@iflt.org.uk
Mrs Kitson	dolphinclass@iflt.org.uk
Mrs Mason	lemurclass@iflt.org.uk
Miss Smart	pandaclass@iflt.org.uk
Miss Garrett	slothclass@iflt.org.uk
Mrs Grocock and Mrs Wright- Deputy head	tigerclass@iflt.org.uk
Miss Lees- KS1 Team Leader	penguinclass@iflt.org.uk
Miss Smith	zebraclass@iflt.org.uk
Mr O'Brien	giraffe@iflt.org.uk

Please email the class teachers with any concerns regarding learning at home or school. Teachers may not email you back immediately as they have teaching commitments and will not be constantly checking for emails.

For those children in school absences or urgent concerns must be phoned in or emailed to the school office. Phone: 01933 654900 Email: inisoffice@ift.org.uk

You can also contact the **Head Teacher, Mrs Marshall**, via the office email and this will be addressed during office hours.



We want to ensure that our communication with families is still strong so please ensure we have a current email, address, home phone number and mobile number. If any of these change, please inform the school office as soon as possible. If we need to get hold of you quickly the more contacts we have the better! This is still important even if your child is home learning at present.



We do not answer direct school related questions on either Twitter or FaceBook as these are to share and celebrate school and home working together. If you have a question either email or phone the school office.

School and nursery are closed on the afternoon of Friday 22nd January in honour of Mrs Sharon Powell, for private reflection. Nursery will close as 11.30am and main school 12pm.

Twitter and Facebook



We have a School Twitter and a FaceBook page. We would love you to share home learning on



Twitter and also any physical exercise you might be doing with your child at home. Keeping fit, healthy and motivated during this second lockdown may be difficult but we are hoping to flood our Twitter pages with positive images!

[Click here to go to our Twitter feed on our website](#)

If you already have a Twitter account, please search for @INISYear2, @INISYear1, @INISReception, @INISNursery, @INISMrsMarshall If you are new to Twitter, it's easy and it's free to create an account.

How to set up a Twitter Account:

On your PC/laptop: Go to www.twitter.com, enter your email address and choose a password, then click on 'Sign up to Twitter'. Search for [@INISYear2](#), [@INISYear1](#), [@INISReception](#), [@INISNursery](#) and click 'Follow'.

On your **smartphone or tablet**: Download the free 'Twitter' app from your usual App Store, enter your email address and choose a password, then click on 'Sign up to Twitter'. Search for [@INISYear2](#), [@INISYear1](#), [@INISReception](#), [@INISNursery](#), [@INISMrsMarshall](#) and click 'Follow'. You can set up your account so that an alert or banner notification appears on your screen when we post a message.

You can just use Twitter to share your child's adventures, even if you don't use it as your regular social media page.

Safeguarding

SAFEGUARDING
We take our Safeguarding responsibilities very seriously. For more information visit our website. If you have any safeguarding concerns, please contact one of these people as follows:

Name & Safeguarding role	Phone number	Email address
Mrs Marshall (Designated Safeguarding Lead)	01933 654900	head@willingborough-inf.northants-ed.gov.uk
Mrs Harvey (Designated Safeguarding Deputy)	01933 654900	tracy.harvey@ift.org.uk
Mrs Colquhoun (Designated Safeguarding Deputy)	01933 654900	lesley.colquhoun@ift.org.uk

We also have Miss Chapman, Mrs Wright and Mrs Luke who are also Designated Safeguarding Deputies and can be contacted through the main school number above.

Please ensure you contact school or the local authority on 0300 126 1000 with any safeguarding concerns whether your child is at home or school.

Reading is the key to all learning!



Please try to ensure you keep reading with your child during this lockdown. This is vital to ensure children keep on track with all

other learning.

Reading Dog stories- check out the website by following this link to some new stories involving our reading dogs. Meet Monty and Star! [Meet our reading dogs](#)

Reading Eggs is available at your child's reading level for all Reception and Year One Children. The children have their logins in their writing book. This is an excellent programme and includes access to Fast Phonics and many books to read at home and school.

<https://readingeggs.co.uk>

Free books to read online at **Oxford Owls**.

Teachers will be sending out information for a further selection of books which we have paid for children to access at home and school.

<https://home.oxfordowl.co.uk/reading/free-ebooks/>

Try this link to "**Teach Your Monster To Read**".

<https://www.teachyourmonstertoread.com/>

Try the **Oak Academy virtual library**

<https://library.thenational.academy/>

Other materials to support learning at home and school

The **Oak Academy** have a wide range of lessons and learning activities for children. Some of these will be planned in by our teachers for home learning but there is lots more on there.

<https://www.thenational.academy/>

Here is also a link to **White Rose maths** which is the programme we use in school, so will support learning at home and school.

<https://whiterosemaths.com/homelearning/>

Newsround News explained for children. [Find out more.](#)

School and nursery are closed on the afternoon of Friday 22nd January in honour of Mrs Sharon Powell, for private reflection. Nursery will close at 11.30am and main school 12pm.

School Leavers



We will be saying goodbye to **Mrs Harvey**, one of our wonderful family workers. Mrs Harvey is relocating out of the county. She has worked at our school and Children's Centre for fifteen years and we will all miss her knowledge, skills and sense of humour. We wish her well with her new adventures, when she leaves us at the end of January. We will all miss you!

We are also saying goodbye to **Mrs Bailey**, who has made the decision not to return after her maternity leave ends in February. Mrs Bailey is a wonderfully talented teacher and we will miss her but understand her decision to spend more time with her beautiful little boy. Mrs Kitson has agreed to continue to teach Dolphin class, until the end of the year. Remember we still need to meet that gorgeous baby boy!

And our final goodbye is to the wonderful **Mrs Powell**. I've had some beautiful tributes from staff and parents which will be placed into a book of remembrance for her family, of her time at INIS. Once part of the INIS family, always a part of our family in our hearts and memories. We will miss your love, kindness and nurturing ways. If you would like to add a short message to the remembrance book, please email head@irthlingborough-inf.northants-ecl.gov.uk mark in the subject line Mrs Powell.



[Northants live article about Mrs Powell](#)

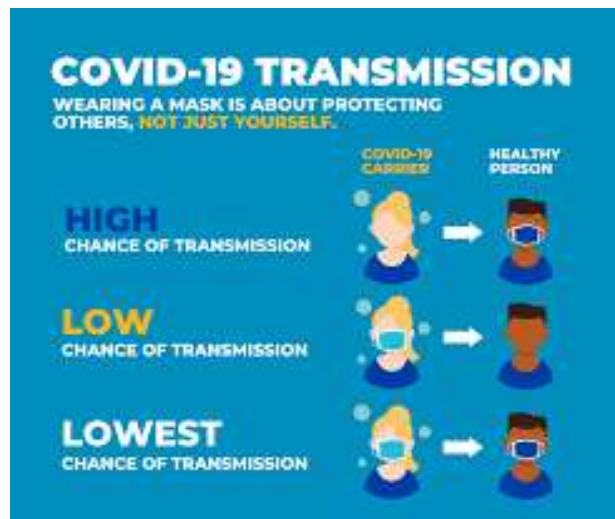
[Northants live article about Mrs Powell v2](#)

Covid 19 infection rates remain high so please follow the government guidance

If you have recent onset of any of the most important symptoms of coronavirus:

- a new continuous cough
- a high temperature
- a loss of, or change in, your normal sense of smell or taste (anosmia)

you and your household must isolate at home: wearing a face covering does not change this. You should [arrange to have a test to see if you have COVID-19](#) and ensure you contact school.



ENGLAND LOCKDOWN
STAY AT HOME
THE NEW STRAIN OF CORONAVIRUS IS SPREADING FAST.
WE ALL NEED TO PLAY OUR PART TO STOP THE SPREAD.

▶ LEAVING HOME
You must not leave, or be outside of your home or garden, except for a very limited set of exemptions e.g. to shop for basic necessities, exercise, go to work, if you cannot do so from home, or to escape risk of harm.

▶ MEETING OTHERS
You cannot leave your home to meet socially with anyone, except with your household or support bubble (if eligible to form one). Stay 2 metres apart from anyone not in your household or support bubble.

▶ EXERCISE
You may exercise on your own, with your household or support bubble, or with one person from another household (when on your own). Stay 2 metres apart from anyone not in your household or support bubble.

▶ BARS, PUBS AND RESTAURANTS
Hospitality closed aside from sales by takeaway until 11pm, click-and-collect, drive-through or delivery. Alcohol cannot be purchased through takeaway or click-and-collect from hospitality venues.

▶ RETAIL
Essential shops can open. Non-essential retail must close and can only run click-and-collect and delivery.

▶ WORK AND BUSINESS
Everyone must work from home unless they are unable to do so.

▶ EDUCATION
Early years settings open. Primary and secondary schools and colleges move to remote provision except for vulnerable children and children of critical workers. Most university students to move to remote learning.

▶ LEISURE AND SPORTING FACILITIES
Closed, with limited exceptions.

▶ ACCOMMODATION
Closed, with limited exceptions.

▶ PERSONAL CARE
Closed.

▶ ENTERTAINMENT
Closed.

▶ OVERNIGHT STAYS
You must not stay overnight away from home. Limited exceptions apply e.g. to stay with your support bubble.

▶ WEDDINGS AND FUNERALS
Funerals of up to 30 people permitted. Weddings up to 6 people permitted in exceptional circumstances. Wake and other linked ceremonial events of up to 6 permitted.

▶ PLACES OF WORSHIP
Places of worship can remain open and communal worship is permitted, but you must not mix with those outside your household or support bubble.

▶ TRAVELLING
You must stay at home. If you do leave home for a very limited set of exemptions, you should stay local in the village, town, or part of the city where you live where possible. Do not travel abroad unless an exemption applies.

▶ CLINICALLY EXTREMELY VULNERABLE
Shielding reintroduced across England. You should not travel to work, school, college or university and should limit the time you spend outside the home. You should only go out for medical appointments, exercise or if it is essential.

▶ CARE HOME VISITS
Visits can take place with arrangements, such as outdoor screens, sliding panels, or behind windows. Close-contact indoor visits are not allowed. No visits will be permitted in the event of an outbreak but and of life visits are permitted in all circumstances.

STAY HOME • PROTECT THE NHS • SAVE LIVES

For more information go to:
gov.uk/coronavirus

Here is a digital book to share with your child about Coronavirus and this lockdown. This may be particularly useful for children at home. I advise parents to read first before deciding, it is suitable for their child.

<https://www.flipsnack.com/CSKidsBooks/what-s-going-on.html>

School and nursery are closed on the afternoon of Friday 22nd January in honour of Mrs Sharon Powell, for private reflection. Nursery will close as 11.30am and main school 12pm.

Remote Learning

We understand that home learning can be difficult but we want to support parents as best we can whilst all children are unable to come into school. We have changed the way we are doing home learning to hopefully give a little more structure to a home school day. The winter weather makes lots of things more difficult too!

We want to constantly improve and help and support our families during this lockdown but we need to know what works for you. We know that not everything will suit everyone, but we are hoping by using Teams those families where timings don't work for live lessons, you can go back and look at the lesson in your own time. Or if something is going at a pace which is too fast for your child you can re watch the video and pause to discuss the learning again.

Please find a short survey about our home learning offer. Remember you can find the home learning on our website too.

Please click on the link to the short survey- it will really help as we move towards half term.

<https://forms.office.com/Pages/ResponsePage.aspx?id=dYo2-w-DZ0aSpunoapGXiNGaHTjTcsdEuX7cA27QvoJUQTB MUTBSWTRYWkRIOTJCOEg4NIRSSUdBRy4u>



Say hello to Monty and Star our lovely reading dogs!

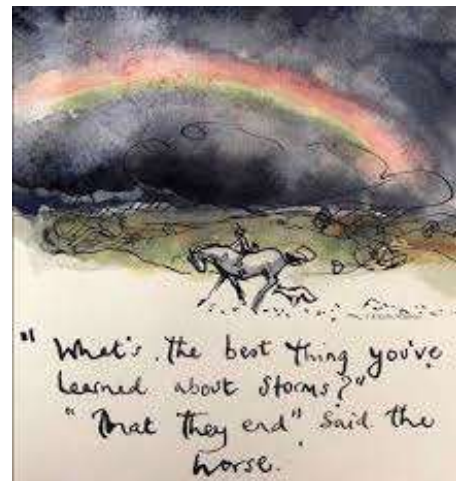
[Meet our reading dogs](#) by clicking on this link.

Pupil Premium

We are looking to organise pupil premium vouchers for our families before the half term break. We are aware that again during this lockdown some family circumstances may have changed. Please let us help you to support your family. If you are in receipt of benefits or on a low income you may be eligible for supermarket vouchers and support for school uniform, clubs and additional support for your child when everyone is back at school.

 Call 01604 366656	 Apply online	 Text 'FSM' followed by your full name, National Insurance Number, your child's name and school name to 60622
---	---	--

If you are unsure what to do please phone the school office for support, 01933 654900.



"What's the best thing you've learned about storms?"
"That they end" said the horse.



School and nursery are closed on the afternoon of Friday 22nd January in honour of Mrs Sharon Powell, for private reflection. Nursery will close as 11.30am and main school 12pm.