



Surrey sets us an attendance target each year. Good attendance for our pupils is 96% or more over the year. Children with good attendance get a special certificate in July.

## Why is good attendance so important?

Children with good attendance get better results at school. Research shows that attendance of less than 90% could mean 1-2 grades lower than expected at GCSE.



In a year there are 190 statutory school days leaving 175 days for holidays, appointments and shopping.

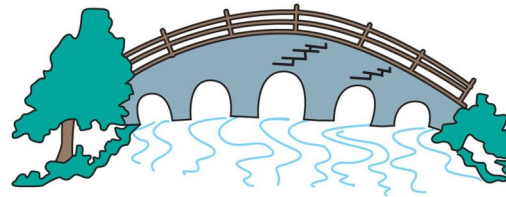
Children with good attendance are happier at school. Each week the class with the best attendance get the *good attendance teddy* to keep in their class.



If a child misses 16 days of school a year they are out of school more than they are in school!

$$175+16=191$$

If a child has 8 days off in a school year for illness then their attendance will still be good. Taking additional time off for holidays however will cause attendance to be flagged as a concern and they may be contacted by the Educational Welfare Officer.



All Saints C of E Infant School Tilford

OFSTED use attendance as one measure of how good a school is. At the moment our attendance is low compared to similar schools.

## How do children feel when they have poor attendance?

Children tell us that they can feel left out when they return to school. They can find it hard to fit back in with friendship groups in the playground and in class.



Children tell us that they worry about what learning they have missed while they are away. Subjects are often taught in units that are a week long. A week's holiday can mean missing a whole unit on addition in maths.



Children tell us that they feel sad when they miss special events in school. We often have these in the last week of term. Children have missed things like the Easter trail, the egg roll, the Christingle service and school trips. An important thing for children is feeling that they belong.

