



Winter: (After Autumn half-term holiday, and throughout Spring Term)

Navy skirt / pinafore /knee length culottes or trousers

or Grey shorts / trousers

Pale blue shirt/ blouse.

School tie (elasticated in FS / KS1)

Navy 'V-neck' jumper or cardigan with school badge. Navy, grey or white socks or tights.

All skirts, pinafores and dresses should be at least knee length.

Navy or blue coat (optional)



Summer: (Summer term, and first half of Autumn Term)

Pale Blue gingham dress,

or

Grey shorts or trousers, with pale blue short-sleeved polo shirt with school logo.

Navy 'V-neck' jumper or cardigan with school badge. Grey or white socks.

All skirts, pinafores and dresses should be at least knee length.



Footwear

Black or brown shoes / boots or sandals.

Socks/ Tights..grey for boys, white or navy for girls.



Coats

Navy-blue or black coat



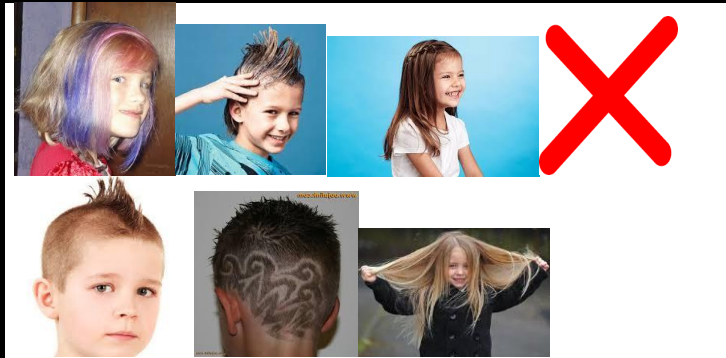
Accessories

No make-up or nail varnish is allowed. Jewellery is not allowed except for ear studs and watches, and these must not be worn for P.E. lessons. Hair ornaments should be appropriate to school - simple bands or 'bobbles'. Large, oversized and colourful hair accessories are not appropriate.



Hairstyles

Hairstyles must be appropriate to school. Shoulder length hair or longer should be tied back in either a pony tail or plait. No tram lines or patterns are allowed.



PE Kit

Plain white/ navy T-shirt or School navy PE shirt (with school badge).
Navy or black shorts.
Black, navy or grey tracksuit bottoms and sweatshirts may be worn over shorts / t-shirts in colder weather.
Trainers and short socks (no tights).

