

HOW TO REALLY LOVE A CHILD

Be there. Say YES as often as you can. Let them bang on pots and pans. If they're crabby, put them in water. Read books out loud with joy. Go find elephants and kiss them. Encourage silly. Giggle a lot. Remember how really small they are. Search out the positive. Keep the gleam in your eye. Go see a movie in your pyjamas. Teach feelings. Realize how important it is to be a child. Plan to build a rocketship. Stop yelling. Invent pleasures together. Surprise them. Express your love. A lot.

Children are miraculous
SARK

Bransgore Vision and Direction



“Growing in the Forest”





Tim Oates talks about assessment without levels

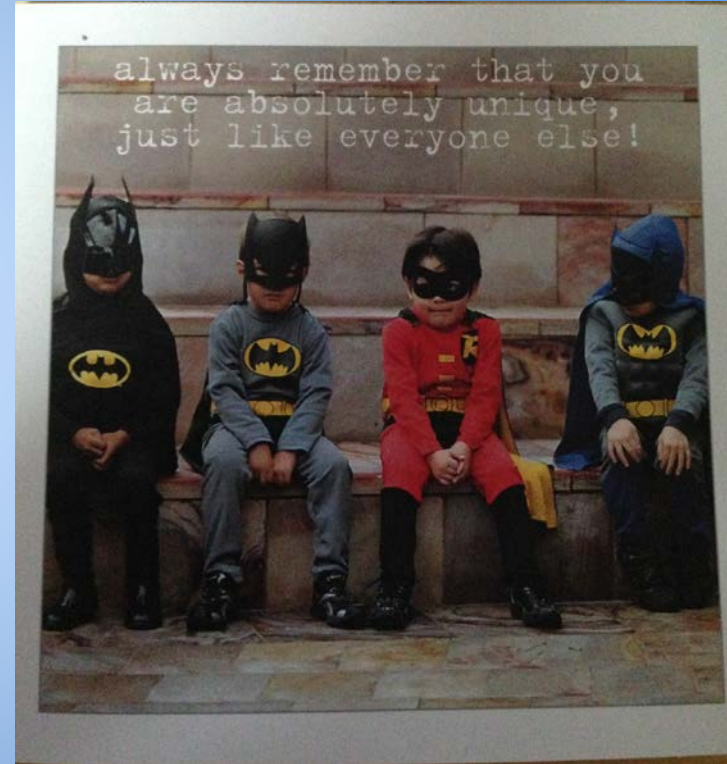
This has huge implications for how we plan and teach every day. This is
NOT just about assessment.

I don't believe you have to be better than everybody else. I believe you have to be better than you ever thought you could be.

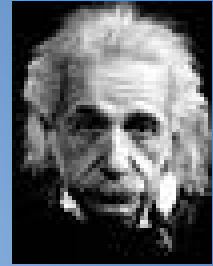
Our Philosophy:

Because every child is unique, we will try to get to know each individually.

We will seek opportunities for every child to shine and succeed.



How will we demonstrate our philosophy?



We will have the highest expectations for pupils.

We will encourage pupils to have the highest expectations of themselves.

We acknowledge the influence of Attribution Theory.

We will foster growth mindset and challenge fixed mindsets amongst adults and pupils in our school community. [Carol Dweck TED](#)

We will teach pupils that mistakes are a critically important and valuable part of the learning journey. "Those who have never made a mistake have never learned anything new" (Einstein)

How will we demonstrate our philosophy?

http://www.ted.com/talks/brene_brown_on_vulnerability?language=en

We will be a safe school where children are protected and where it is cool to tell.

How will we make the philosophy a reality?

By providing an outstanding, vibrant, challenging and innovative curriculum.

By establishing robust assessment and reporting systems.

By providing the best and most modern teaching spaces we can.

By creating inspirational outdoor spaces to play and learn.

How will we make the philosophy a reality?

By training staff to deliver the best lessons and the best interventions.

By providing the best resources we can afford.

By encouraging parents as partners.

By encouraging other agencies and businesses to help us.

By providing cutting edge technology.

How will we make the philosophy reality?

By working in partnership with other schools similar to and different from us both locally, nationally and internationally.

By exploiting our enviable locality.

By teaching pupils to value themselves and each other.

By teaching in mixed ability learning groups.

How will we make the philosophy reality?

By ensuring pupils are ready and able to learn by monitoring and supporting their social and emotional well-being daily.

By raising pupil self-esteem through leading edge P.S.H.C.E, R.E and positive behaviour management.

By giving pupils the skills and resilience to learn independently

School Improvement Plan

Embed 2nd year of new curriculum

Develop a pilot future model classroom using Learnstor

Train teachers to fully exploit new ICT resources.

Establish collaborative partnership with local schools for the benefit of staff and pupils. Establish shared moderation and Q.A

Build multi use games area.

introduce new RE,PSHCE and P.E Scheme of work

Develop training and conference programme to create cost neutral training model.

Apply for 3 more SLEs H/T apply to be NLE.

Embed assessment without levels system including regular AFL and IT tracking system.

create new library/ learning resource centre

Ensure minimum 90% of pupils attain ARE in reading, writing and maths across each cohort.

Develop outdoor and environmental learning spaces and formalise use. Apply for Eco. Schools award.

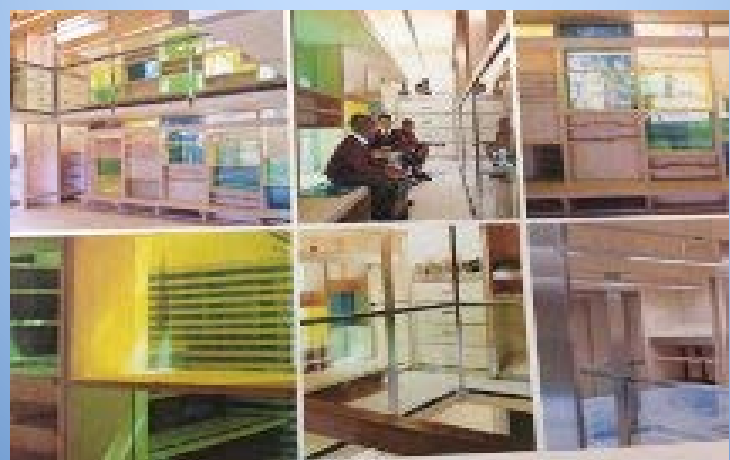
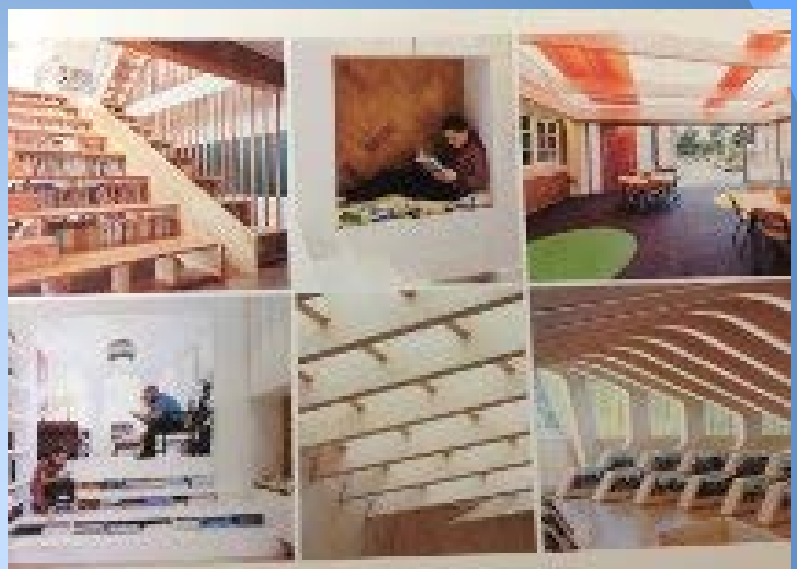
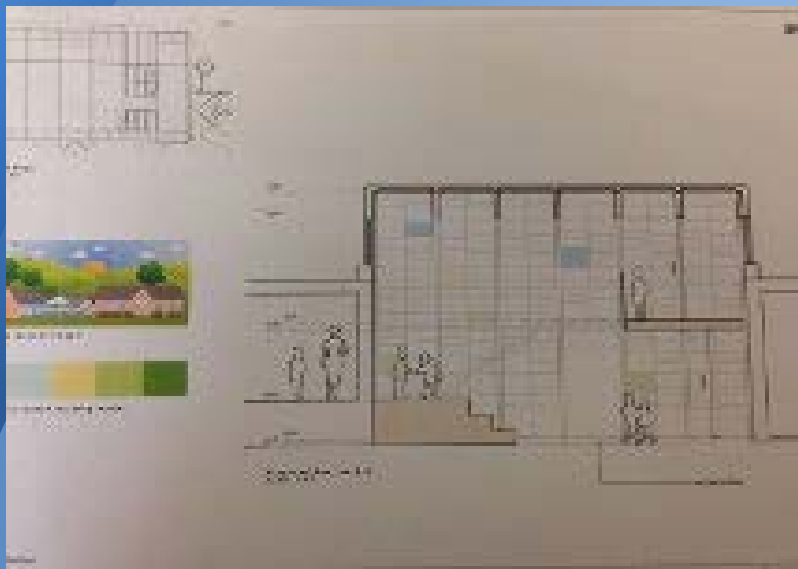
Embed and extend house points system

Submit bid to extend Early years learning space.

Develop innovative lesson study programme to encourage self improving philosophy

Maximise staff knowledge and teaching passions by creating a skill share in afternoons





We will be:

Supportive

Collaborative

Open

Ambitious

Inclusive

Innovative

Honest

Relentlessly optimistic!

AND CREATIVE!

Ken Robinson

