

One Page - Code of Conduct

Introduction

This document provides a guide for adults working in schools (including staff, governors, volunteers and visitors) about acceptable and desirable conduct to **safeguard** both adults and pupils. It refers to and complements other policies and guidance in our school, including the School's Child Protection Policy, Behaviour Policy and "Guidance for Safer working Practice for Adults who work with Children and Young People in Education Settings".

Always remember that while you are caring for other people's children, you are in a position of **trust** and your responsibilities to them and the organisation must be uppermost in your mind at all times. The child's welfare is paramount (Children Act 1989) and DfE guidance "Keeping Children Safe in Education" is essential for all staff and volunteers.

Do not:

Discriminate favourably or unfavourably towards any child

Use any kind of physical punishment

Smoke, use non-prescribed drugs or be under the influence of alcohol whilst caring for children

Behave in a way that may frighten or demean any child

Use any racist, sexist, discriminatory or offensive language

Invite a child to your home or arrange to see them outside the set activity times

Engage in any sexual activity (this includes using sexualised language) with a child you meet through your duties or start a personal relationship with them – this would be an abuse of trust

Engage in rough or physical games – including horseplay

Let allegations made by a child go unchallenged, unrecorded or not acted upon

Rely upon good nature to protect you or believe "it could never happen to me." (never put yourself in a position that could be misinterpreted)

Give children presents or personal items (unless an item given in your professional capacity, e.g. the custom of giving an end of year present)

Accept a child as a friend on any social media site

Make any comment on social media sites which could lead to criticism of the school

Post pictures of children on any social media site

Use your personal electronic devices to take photographs of children

Do:

Be familiar with and work in accordance with all of the school's policies.

Provide a good example and be a positive role model to pupils

Ensure that your relationship with pupils remains on a professional footing

Behave in a mature, respectful, safe, fair and considered manner

Exercise caution about being alone with a child. In situations where this is unavoidable, ensure another colleague or volunteer knows what you are doing and where you are

Ensure that any physical contact is initiated by the child's needs, e.g. for a hug when upset.

Prompt children to carry out personal care themselves and if intimate care is needed ensure 2 adults are present.

Talk to children about their right to be kept safe from harm

Listen to children (be approachable) and take every opportunity to raise their self-esteem

Work as a team with your colleagues / volunteers. Agree with them what behaviour you expect from children and be consistent in enforcing it

Remember that if you have to speak to a child about their behaviour, you are challenging 'what they did', not 'who they are' (label the act, not the child)

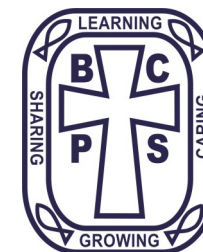
Make sure you are up to date with identifying child protection issues and report any concerns to the designated member of staff for safeguarding children

Be clear with anyone disclosing any matter that could concern the safety and well-being of a child that you cannot guarantee to keep this information to yourself

Be friendly but NOT 'a friend'

Offer alternative changing arrangements and respect a child's privacy (especially age 9+)

Ensure that all communication (including online, social media and email) are professional in nature.



We have also adopted the MODEL POLICY CODE OF CONDUCT FOR TEACHING AND SUPPORT STAFF IN SCHOOLS from the LA (July 2015). Please see policy booklet for full information.

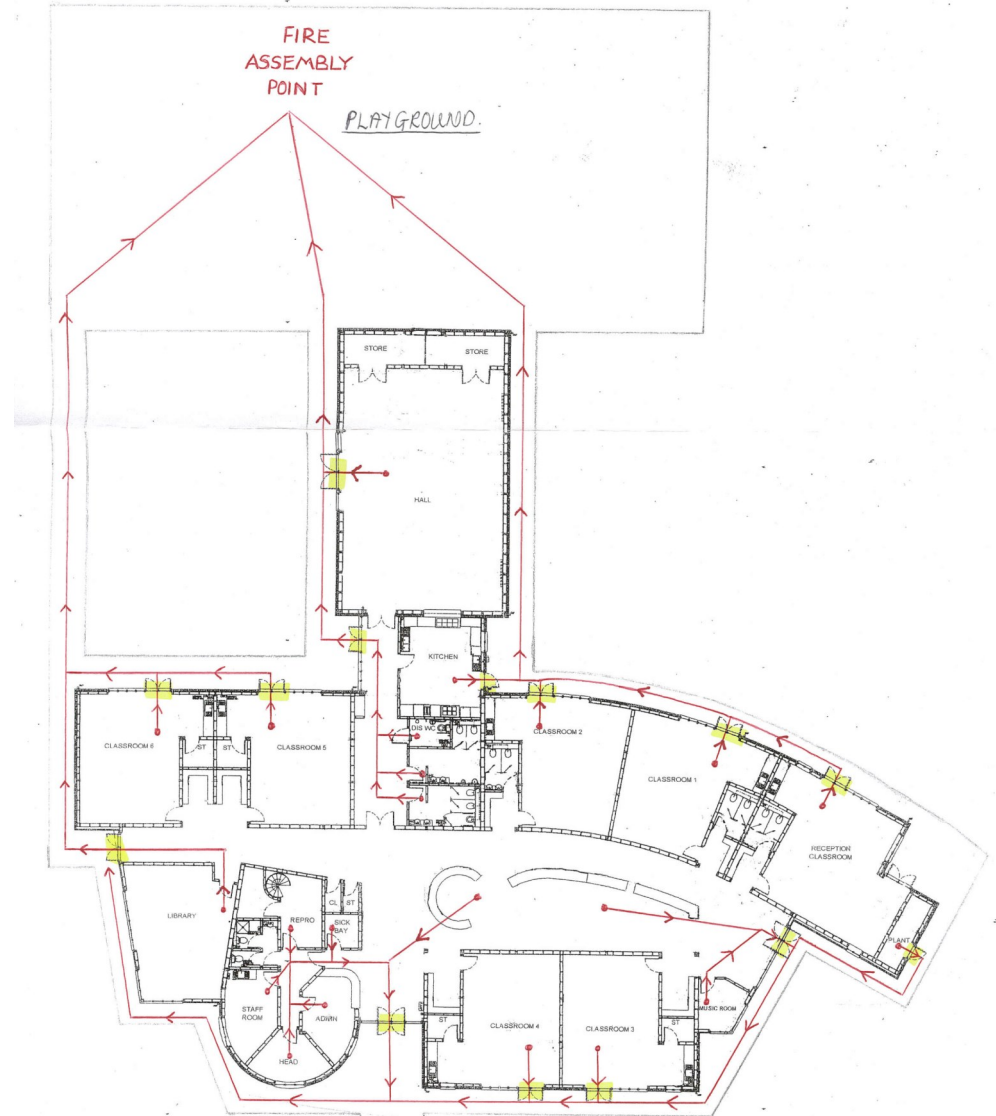
Broad Chalke CE VA Primary School

Music Teachers, Sports Coaches and After School Club Leaders

Handbook

School Plan

(Showing all evacuation routes to the Fire Assembly Point)



Safeguarding Policy

The Designated Safeguarding Lead at Broad Chalke Primary School is Mrs Amanda Brockway and Mr Jez Howell is Deputy Safeguarding Lead. If you are at all concerned about any pupil at Broad Chalke School then do not hesitate to contact Mrs Brockway or Mr Howell. It is better to be safe than sorry.

Schools now have a further duty to look out for children at risk of:

- Radicalisation by extremist views, this is called the 'Prevent Duty'.
- Child Sexual Exploitation
- Female Genital Mutilation

If you have any concerns about a child, please speak to Mrs Brockway or Mr Howell.

Please see our Child Protection Policy available on our school website www.broadchalke.wilts.sch.uk

INDEX

Page	
2	Introduction
3	Aims of Broad Chalke Primary School
4	Information
5	Information continued
6	Emergency Procedures
7	The School Day
8	Safeguarding and Child Protection
9	Plan of the school
10	One page Code of Conduct

Broad Chalke Primary School

A guide for Music Teachers, Sports Coaches and After School Club Leaders

Welcome to Broad Chalke Primary School

This booklet is designed to give you some important guidelines to help you settle in quickly and play your part in the school.

We also want you to understand more about our school and how you can help to keep children safe.

Anyone who works with our children must also abide by our code of conduct to help to safeguard children.

Best Wishes



Amanda Brockway

Headteacher

The School Day

Times	KS1	KS2
8:50 - 8:55	Arrive	Arrive
8:55 - 9:00	Lead in	Lead in
9:00 - 9:10	Registration	Registration
9:10 - 9:30	Collective Worship	Collective Worship
9:30 - 10:45	Lesson 1	Lesson 1
10:45 - 11:00	Break	Break
11:00 - 12:15	Lesson 2	Lesson 2
12:15 - 1:15	Lunch and play	Lunch and play
1:15 - 1:20	Registration	Registration
1:20 - 1:45	Lesson 3	Lesson 3
1:45 - 3:00	Lesson 4 <i>Play - KS1 only 2:15 - 2:30</i>	Lesson 4
3:00 - 3:15	Story KS1 only	Lesson 4 continued

Emergency Evacuation Procedures

ADULTS

1. Ensure the safety of the children.
2. Stop what you are doing immediately.
3. Leave the building without delay.
4. Walk in silence to the main playground (Assembly Area).

PUPILS

1. Stop what you are doing immediately.
2. Leave the building without delay.
3. Walk in silence to the main playground (Assembly Area).
4. Line up in register order in the normal place allotted to your class.
5. Stand in silence and wait until you are dismissed.

THE MOST IMPORTANT THING IS TO LEAVE THE BUILDING WITHOUT DELAY

STAFF

1. Registers, visitors' book and all signing in and out books are taken to the Assembly Area by the person at Reception (the class teacher will bring the register if it is still in the classroom at the time of evacuation i.e. during registration).
2. In the absence of a Class teacher any member of staff may be asked to check a register.
3. Immediately the class is checked the registers must be returned to the office staff and any pupils not accounted for should be reported to the Headteacher.
4. Await further instructions maintaining silence.

MISSION STATEMENT

'With the love of God we learn, care, grow and share.'

VISION

Our shared vision is that every child who leaves this school will have had a high quality education and gained the skills to become a life-long learner; they will have developed values, based on Christian ethics, which will inspire them to play a valuable part in their personal, family and community life.

SCHOOL AIM

To provide a secure, happy and nurturing environment in which children develop their self-confidence and are challenged to fulfil their potential underpinned by an understanding of the Christian faith and their own personal values as well as a respect for other faiths and cultures.

OBJECTIVES

1. To enjoy school life, making the most of all opportunities and having fun!
2. To value every child for their own unique gifts.
3. To provide a broad, balanced and creative curriculum which inspires all children to achieve their full academic potential.
4. To develop lively and enquiring minds so that children embrace new challenges and opportunities with confidence.
5. To equip children with the inter-personal and technological skills they will need to be successful in later life.
6. To help children to understand the need to adopt a healthy lifestyle: eating healthily, being active and developing emotional well-being.
7. To enable children to understand the world in which they live and the positive impact they can have on the local community, the environment and society in general.

Volunteer Information

Dress

Please wear appropriate clothes. Please do not wear anything too casual or T shirts with slogans etc.

Signing In

Please sign in and out at Reception each day and wear the badge given.

Confidentiality

Do not talk about pupils or staff to others in a critical way although of course you may raise any concerns you have. We may have some pupils who find their work difficult - please be sensitive to their needs and assist them tactfully. Do not discuss children or staff out of school or on social networking sites.

Behaviour

Pupils are expected to be polite and helpful towards you. Please do not allow pupils to be cheeky or use inappropriate language to you. Please inform staff at once if you consider there are any problems which need to be rectified.

Please ensure that you avoid any words which are unsuitable for children.

General

Children often love to meet new people and may want to be affectionate. Please be friendly but avoid any physical contact. Do not be too familiar. Ensure that you and the pupils have the right relationship and avoid any misunderstandings.

Health and Safety

Teachers often have to move equipment etc. but ensure that you are safe and do not lift anything too heavy. If in doubt ask or check first - do not be afraid to say no if you are unhappy about a task set.

Do not stand on chairs or tables to display items, only use a safety step. If you see anything risky or which you feel is dangerous, e.g. wet floor, please report it to someone. No-one will mind and people will be pleased that you are being thoughtful.

Fire Drill

If you hear the fire bell leave the building by the nearest marked exit and make your way to the playground.

First Aid

If a pupil needs First Aid ask a member of staff to contact one of our First Aid Staff. Please let us know if you have any medical conditions which our First Aid staff need to know about in case of emergencies.

Safeguarding

Please read the information about Safeguarding and Child Protection on display in the staff room titled 'What to do if you are worried that a child is being abused or neglected'.