



EXCLUSIONS POLICY UNDER CONSULTATION WITH GOVERNORS

www.wattonatstone.herts.sch.uk

When the Headteacher has excluded a pupil, the Exclusions committee may be required to consider representations from a parent/carer and/or to consider reinstatement of the pupil.

The Exclusions committee will be formed from available and qualified Governors.

The Exclusions committee will follow the guidance recommended by the Department for Education (DfE), available on the DfE website (<https://www.gov.uk/government/publications/school-exclusion>), document name "Exclusion_from_maintained_schools__academies_and_pupil_referral_units".

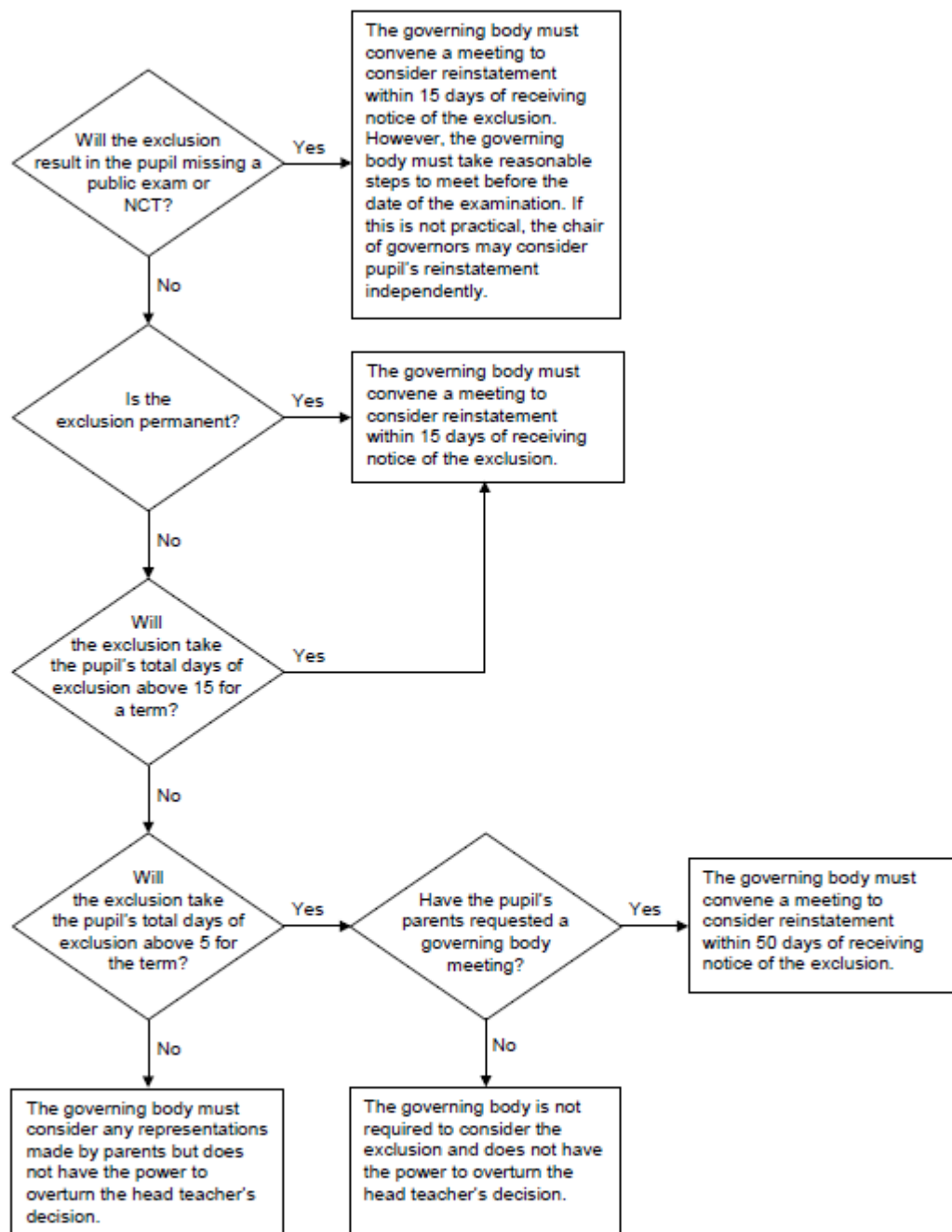
Herts County Council has an Exclusion Guidance Supplement on its website, which supports the DfE guidance, (<http://www.thegrid.org.uk/info/welfare/exclusions.shtml>), document name "exclusion_guidance_hcc_dec16.pdf".

A copy of each of the above documents current at the time of ratification of this policy has been put on the school website for reference, but the above websites should always be checked when an exclusion is being considered, so that the most up to date guidance is used.

A summary of the governing body's duties to review the head teacher's exclusion decision, taken from Annex A of the DfE guidance, is also appended.

Last Author: Robin Baynham
Date: April 2017 (Summer Term)
Owning role: Chair of the Governing Body
Status: Statutory
Review schedule: Biennial

Annex A – A summary of the governing body’s duties to review the head teacher’s exclusion decision



The governing body may delegate its functions to consider an exclusion to a designated sub-committee. References to days mean 'school days'.