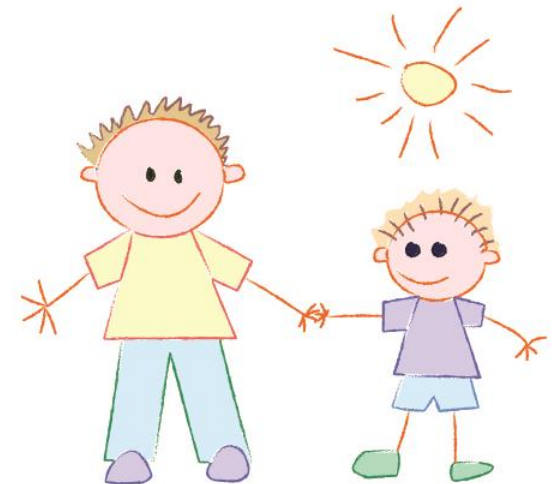


Assessment Terminology at Sandling Primary School



Key Stages in Primary School

Key Stage	Age Range	Year Groups
Foundation Stage	Birth to end of Reception Year	Reception
Key Stage 1	5-7	Year 1 & Year 2
Key Stage 2	7-11	Years 3,4,5 and 6

Curricula in Primary School

Key Stage	Curriculum
Foundation Stage	Early Years Foundation Stage Framework
Key Stage 1	National Curriculum 2014
Key Stage 2	National Curriculum 2014



Assessment

Assessment
and Reporting
to Parents

Attainment

Progress

Attitude to
Learning



Assessment - EYFS

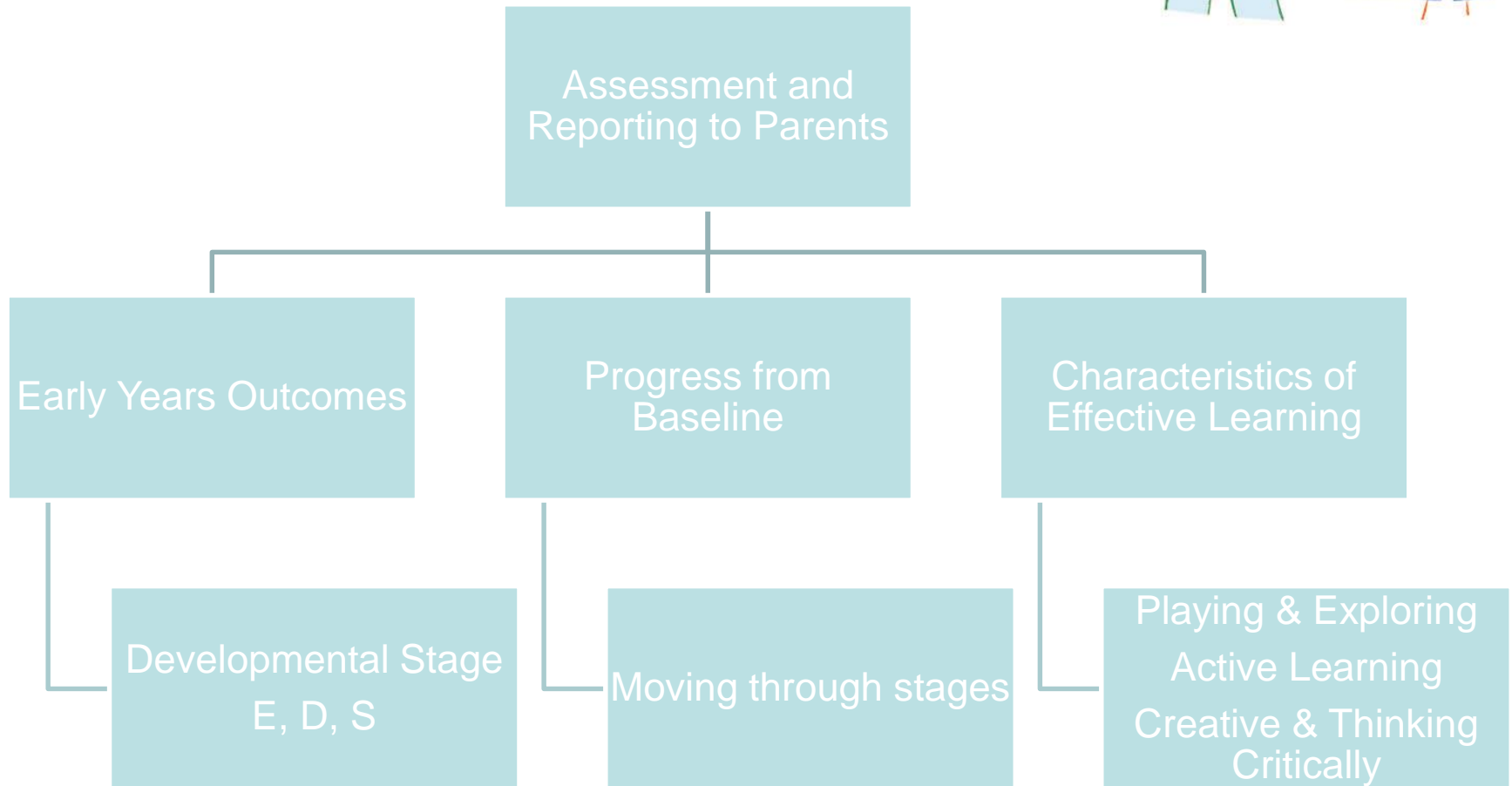
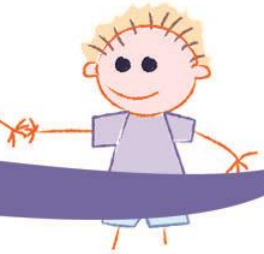
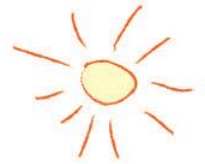
Assessment
and Reporting
to Parents

Early Years
Outcomes

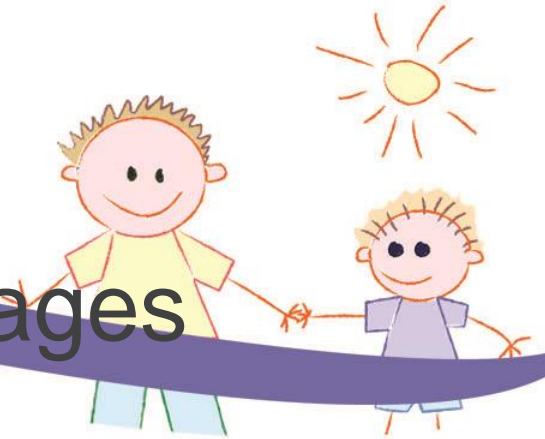
Progress from
Baseline

Characteristics
of Effective
Learning

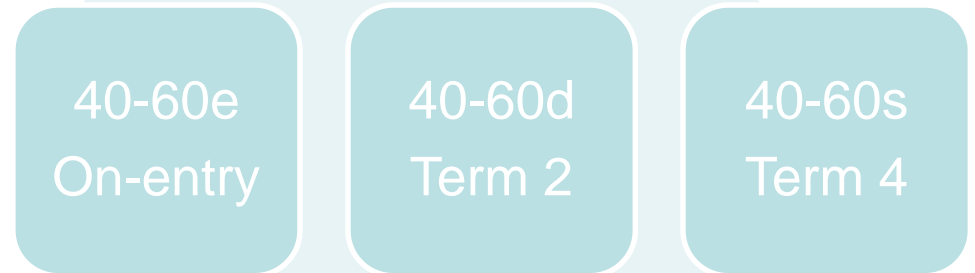
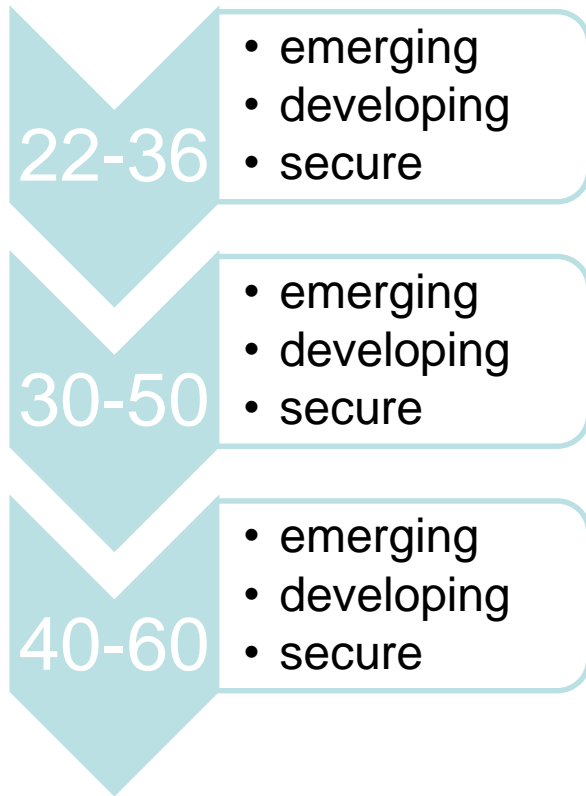
Assessment - EYFS



EYFS – Developmental Stages



Age Related Expectations through Year R



Used for reporting attainment and progress through Year R



Early Years Profile

Early Learning Goal

1

2

3

emerging

expected

exceeding

Reported for all 17 areas of learning

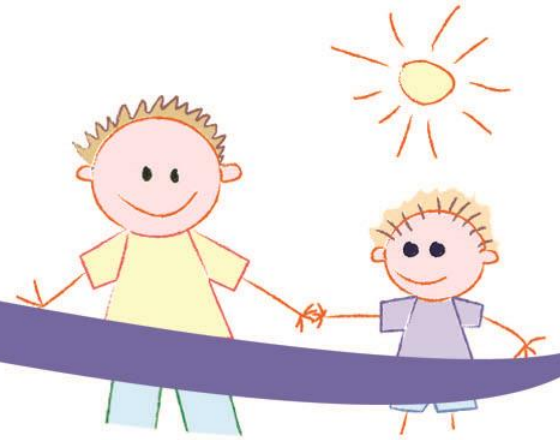
Used for reporting attainment at end of Year R

Narrative for CofEL

Next steps for learning



Assessment



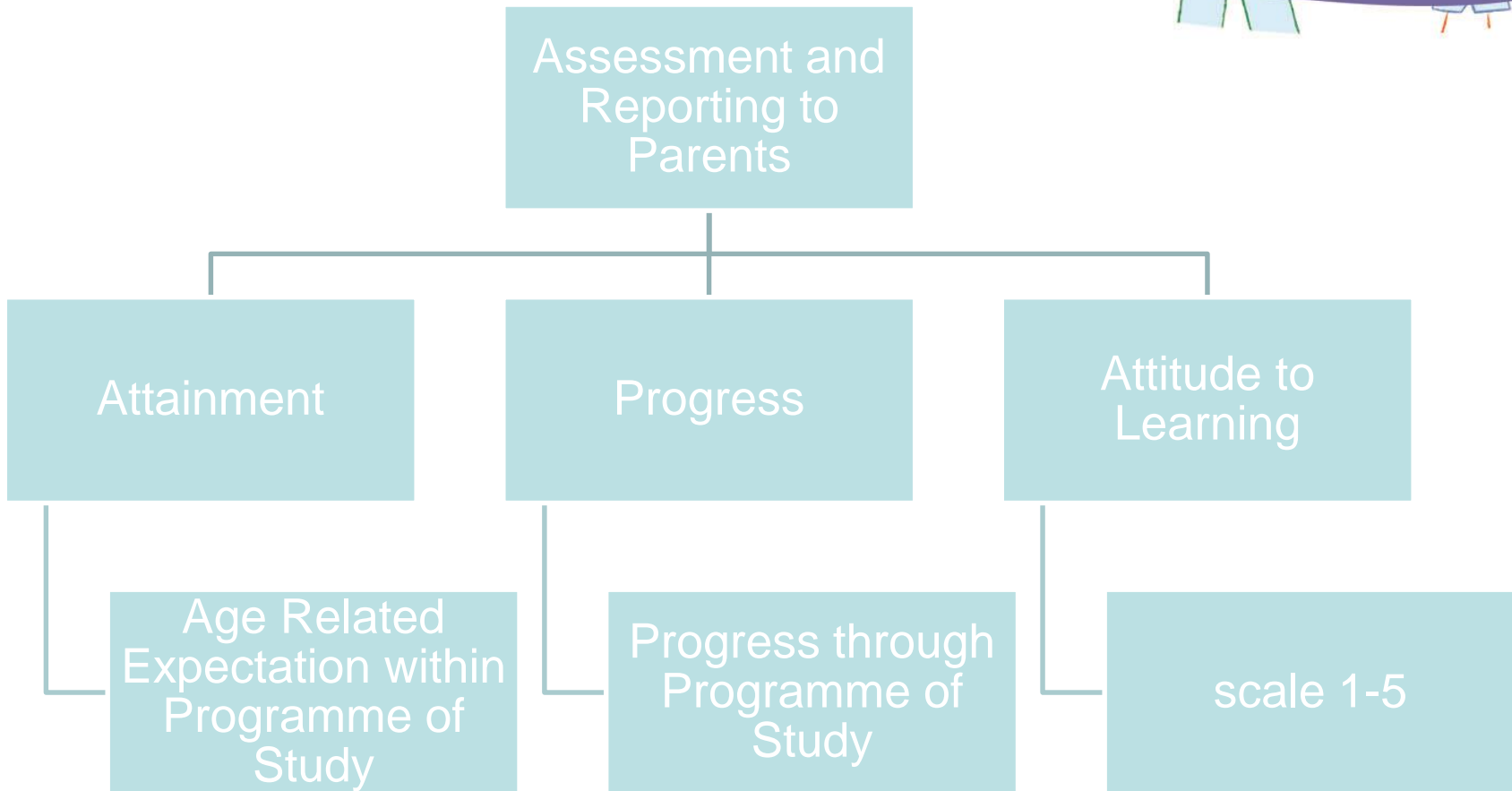
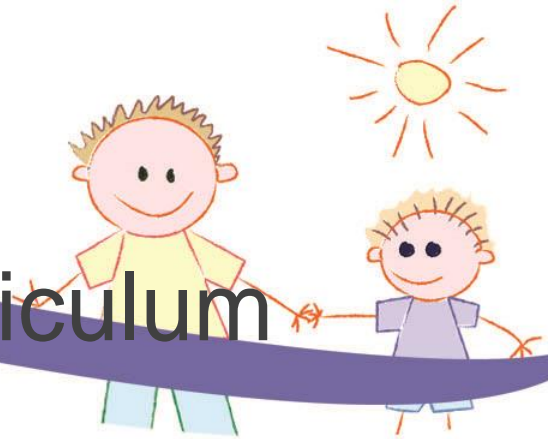
Assessment
and Reporting
to Parents

Attainment

Progress

Attitude to
Learning

Assessment – National Curriculum



Programmes of Study

- Programmes of Study set out what teachers should cover in every subject during each Key Stage.
- Long term plan on school website details what aspects of the PoS for each year group get taught when.

Assessment of National Curriculum

- National expectation is that children have achieved the learning objectives set out in the Programme of Study by the end of the year. This is called Age Related Expectation.
- If children do not achieve ARE then they are assessed as 'emerging'/working towards ARE.
- Children can be assessed as working at Greater Depth (previously 'exceeding') within PoS.
- At Greater Depth, children can transfer their learning to different contexts and can explain their understanding to others.
- Some children may be working on PoS from earlier years (SEN).



Mid-Year Reports National Curriculum

- Not all objectives taught.
- Children assessed against taught objectives.
- Assumption is that children will continue to progress through the Programme of Study at the same rate, therefore attainment reported as:
‘On Track for’ emerging/expected/greater depth
- Progress is measured through year.
- YTD progress is measured against standards achieved from baseline (on-entry from prev year).
- Expected progress – expected ARE Y3, ‘on-track’ for expected ARE Term 3 Y4.
- Accelerated progress – emerging ARE Y3, expected ARE Y4.



EOY Reports National Curriculum

- All PoS objectives taught.
- Attainment reported as :
emerging/expected/greater depth
- Progress is measured from entry baseline of previous year.
- Expected progress – expected ARE Y3, expected ARE Y4.
- Accelerated progress – emerging ARE Y3, expected ARE Y4.
- Some children will be working on PoS from previous years (SEN) – parents will be aware.

Key Stage 1 TA – Possible Outcomes

Key Stage 1 Teacher Assessment – possible outcomes

	Reading	Writing	Mathematics	Science
Higher-attaining	Working at greater depth within the expected standard (GDS)	Working at greater depth within the expected standard (GDS)	Working at greater depth within the expected standard (GDS)	Working at the expected standard (EXS)
Expected attainment	Working at the expected standard (EXS)	Working at the expected standard (EXS)	Working at the expected standard (EXS)	
Lower attaining	Working towards the expected standard (WTS)	Working towards the expected standard (WTS)	Working towards the expected standard (WTS)	Has Not Met the expected standard (HNM)
	Foundations for the expected standard (PKF)	Foundations for the expected standard (PKF)	Foundations for the expected standard (PKF)	
	Below the standard of the pre-key stage (BLW)	Below the standard of the pre-key stage (BLW)	Below the standard of the pre-key stage (BLW)	
Pupils with SEND	P-levels: P4, P5, P6, P7, P8	P-levels: P4, P5, P6, P7, P8	P-levels by strand: P4, P5, P6, P7, P8	
	P-levels for English overall: P1i, P1ii, P2i, P2ii, P31i, p3ii		P-levels for Maths: P1i, P1ii, P2i, P2ii, P31i, p3ii	

Key Stage 1 TA – Possible Outcomes

Working at Greater Depth within the Expected Standard

Working at the Expected Standard

Working Towards the Expected Standard

Foundations of the Expected Standard

For children who have taken the Year 2 tests

*Some pupils with Special Educational Needs may be judged against the separate P-levels.

Key Stage 1 Tests – Scaled Scores



2017

Mathematics & Reading

2018


Mathematics, Reading & GPS

Key Stage 2 TA – Possible Outcomes

Key Stage 2 Teacher Assessment – possible outcomes

	Reading	Writing	Mathematics	Science
Higher-attaining	Working at the expected standard (EXS)	Working at greater depth within the expected standard (GDS)	Working at the expected standard (EXS)	Working at the expected standard (EXS)
Expected attainment		Working at the expected standard (EXS)		
Lower attaining	Has Not Met the expected standard (HNM)	Working towards the expected standard (WTS)	Has Not Met the expected standard (HNM)	Has Not Met the expected standard (HNM)
	Growing Development of the expected standard (PKG)	Growing Development of the expected standard (PKG)	Growing Development of the expected standard (PKG)	
	Early Development of the expected standard (PKE)	Early Development of the expected standard (PKE)	Early Development of the expected standard (PKE)	
	Foundations for the expected standard (PKF)	Foundations for the expected standard (PKF)	Foundations for the expected standard (PKF)	
	Below the standard of the pre-key stage (BLW)	Below the standard of the pre-key stage (BLW)	Below the standard of the pre-key stage (BLW)	
Pupils with SEND	P-levels: P4, P5, P6, P7, P8	P-levels: P4, P5, P6, P7, P8	P-levels by strand: P4, P5, P6, P7, P8	
	P1i, P1ii, P2i, P2ii, P31i, p3ii		P1i, P1ii, P2i, P2ii, P31i, p3ii	

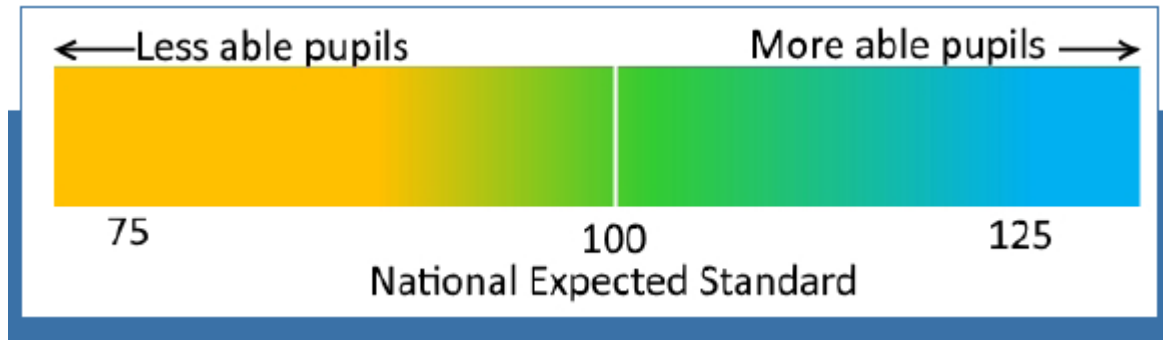
Key Stage 2 TA – Possible Outcomes



Working at Greater Depth within the Expected Standard*	For children who have taken the Year 6 tests
Working at the Expected Standard	
Working Towards the Expected Standard*	
Growing Development of the Expected Standard	For children who were unable to access the Year 6 tests
Early Development of the Expected Standard	
Foundations of the Expected Standard	
Below the Expected Standard	

*These judgements are used only for Writing.

Key Stage 2 Tests – Scaled Scores



Year 1 Phonics Screen

Assessment Grades

Grade	Description
Wa	Took the phonics screening check and met the required standard
Wt	Took the phonics screening check and did not meet the required standard
A	Absent
D	Did not take the phonics screening check
L	Left the school
Q	Maladministration