

Welcome to Silver Birch Class

Adults in our class

- Mrs Dunn
- Mrs Gibson Tuesday pm, Wednesday pm, Thursday am, Friday.
- Mrs Jelf on Thursday afternoon.

Morning expectations

- Early morning work (EMW) when the children enter the classroom.
- Home School records with comments to address into the pink basket, along with any letters.
- Time to change reading books if needed. This is the children's responsibility.

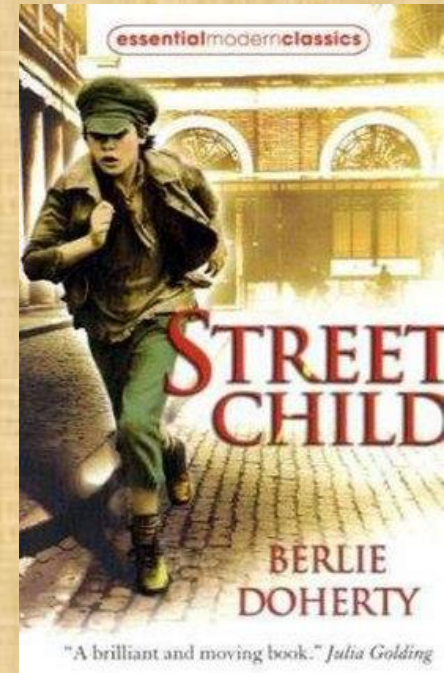
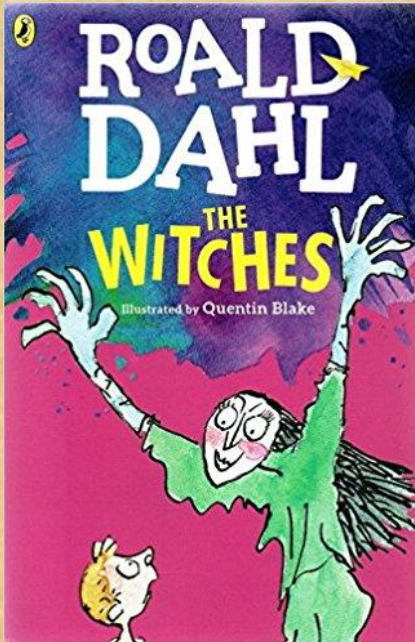
Equipment

- School stationery is provided.
- Pencil cases (if you have one) must live in drawers. Check they fit. All items brought in at own risk!
- Can use own equipment during creative tasks.
- Equipment your child needs every day: A filled water bottle, Reading book and Record, PE Kit, a coat.
- Uniform in line with the school code of dress and named please.

Reading

- Reading books can be changed daily. It is the children's responsibility (8:45am – 9:00am).
- Whole class reading (ERIC). We are reading *The Witches* (4x weekly).
- Reading at home a minimum of 3x weekly, preferably to an adult. However, if they read independently, then you could sign their book and ask them a few questions to check understanding.

Books we are studying this term:



If you have your own book of each of these it would be very helpful.

Maths

- Times tables will be worked on in school weekly. Table focus will be reported via the Home School Record.
- Times Table Challenge (TT38) last week each half term.
- Continuing our weekly skills maths sessions (Fridays)

Spellings

- Spelling zappers in school weekly as part of EMW and spelling sessions on Wednesdays.
- Spellings will be reviewed on a Friday morning and spelling zappers updated when needed.
- Key spellings for the Year Group are included in their files and will be sent home termly to show progress and gaps.

Handwriting

- Cursive script.
- Starting each letter on the line.
- Handwriting lesson in class 1x weekly and an extra support session/ homework for those struggling to join fluently.

Autumn Term Topics



Dear Schools,

Can you help?

We are looking for a suitable location to use for our upcoming programme Autumnwatch. Somewhere with lots of different types of habitats so that we can show our viewers the range of creatures that live in the British Isles. We would like you to investigate your area for suitability and report back.

Hope you are up for the challenge?

We are also looking for any budding presenters for our CBBC programme so get adventuring in your area!

We look forward to hearing about your findings!

Best wishes,

Simon, Michaela and Chris



Homework

- There will be a homework menu for the half term.
- The children will be able to choose a selection of tasks to complete.
- Homework will start this week.

Groups

- Seating/ talk partners are selected randomly and changed every 3-4 weeks.
- Pupils work in mixed ability groups.
- Adults will select groups to work with who have a similar need or next step.
- Pupils are encouraged to self-assess and select their level of challenge in some tasks.

Reward System

- Dojos are awarded for a selection of achievements.

Yellow and red cards are still being used as a warning system for making the wrong choice.

Class Assemblies

- We have two class assemblies in the year.
- November and March.
- Please see the 'Diary Dates' on the newsletter for exact dates.

Home School Record Books

- Any messages can be written in these
- We encourage the children to show us if there is a message we need to see by putting it in the basket.
- Please add comments or initials if you have
 - ✓ listened to your child read
 - ✓ worked with them on their times tables or mental maths
 - ✓ helped with their homework.

Open door policy

- Please come to see us at the end of the school day if you have anything you would like to ask.

Silver Birch Support

- If you are able to support with:
- Afternoon Maths Support – 2.45 – 3.15
- Morning Reading Support – 8.45 – 9.05
- Or if you have any skills or talents to share, Please do contact us; your help would be greatly appreciated.

Thank you for coming.