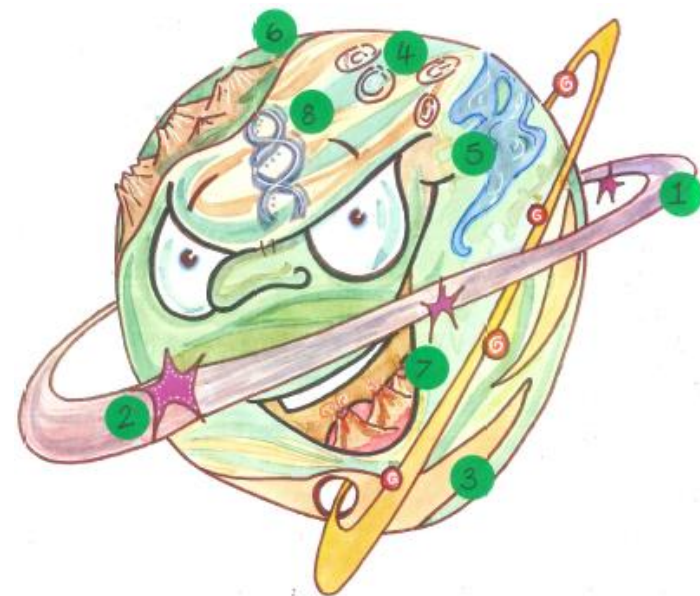




WHEATFIELD'S MATHS PLANETS



	Flashback	Focus	How to help at home
1	Place value	Times tables (to 12x12)	Flashcards, Songs, Mix all tables including division facts at speed, Interactive games and websites such as: https://www.topmarks.co.uk/maths-games/hit-the-button
2	Times tables	Multiplying & dividing by 10, 100, 1000 (including converting measures)	Use place value grids (not just adding a zero!), Apply to real life e.g. recipes https://www.topmarks.co.uk/Flash.aspx?f=bingotimesordivide
3	X and ÷ by 10, 100, 100	Mental calculations (addition and subtraction)	Partitioning, number bonds to 10,20,100 and 1000 Compensating/near 10's (if add 19 add 20 and take one away), inverse operations.
4	Doubling and halving	Mental calculations (multiplication and division)	Use number facts up to 12x12 and apply to larger numbers https://www.topmarks.co.uk/maths-games/hit-the-button
5	Roman numerals	Decimals	Place value of decimal digits, convert to fractions over 10 or 100 (tenths or hundredths).
6	Times Tables	Fractions and percentages	Link to fractions e.g. 50% = 1/2 and 10% = 1/10. Use these to make 60% etc. http://www.bbc.co.uk/skillswise/game/ma18comp-game-percentages-and-fractions-side-by-side
7	Doubling and halving	Factors and multiples	Practise times tables and division facts https://www.topmarks.co.uk/Flash.aspx?a=activity02
8	Times Tables	Squares, cubes and primes	https://www.topmarks.co.uk/maths-games/hit-the-button

PLANET HILBERT



WHEATFIELD'S MATHS PLANETS



PLANET HILBERT