

# Spring Term - Key Stage 2

Year 6



Dear Parents/Carers,

Welcome back and welcome to the Spring Term!

We hope that you have had an enjoyable Christmas and are raring to go for the year ahead. Following on from our World War II theme museums, we would like to thank you for attending in the last week of term; the children enjoyed showing their work and explaining their knowledge of the topic. We would like to take this opportunity to thank you for all your hard work and continued support.

Year Six Team

## Maths

Through our work in maths we will continue work on the understanding and application of number and calculation concepts, as well as studies in Geometry, Measures and Statistics. It is crucial that the children continually practise their multiplication tables knowledge and further facts that can be derived, e.g.  $0.4 \times 6 = 2.4$ ,  $0.04 \times 60 = 2.4$

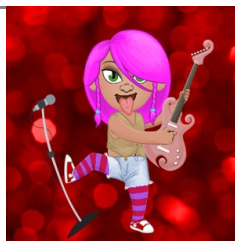
## VISITS

As part of our English topic we are planning a trip to the London Eye. During our visit we will be considering the science behind this famous landmark and looking at it from a literary viewpoint to inspire our writing.



## Times Table Rockstars

As you are aware, we have recently signed up to a new website and app that promotes the speed of recall of multiplication facts. We would like to encourage the use of the site to improve speed and accuracy.



## English

In English this term we will begin by looking at factual historical narrative telling the story of Sir Ernest Shackleton's effort to lead an expedition in walking across the continent of Antarctica in 1914. We will then study 'The London Eye Mystery'. Through our work in Big Reading we will be working on key skills of inference, deduction and authorial intent. If possible we would prefer the children not to have read these books in advance.



## Dates for your diary

10th January	Coffee Morning 8.45am
8th February	Parents 'Pop-In'
12th-16th February	Half term
19th February	INSET day
20th and 22nd	Parents' Evening
29th March	Last day of Term 1.45pm finish.

Please remind your child about our school dress code, particularly concerning hair bands and clips, which should be plain in the following colours - black, green or brown. No hair ornaments or excessive hair clips, such as large bows, should be worn. School shoes as opposed to black trainers are expected and could you please ensure that children have their full P.E. Kits in school, including a tracksuit to offer some protection from the cold weather.