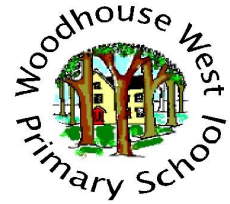




Attendance Spring 2 2018 Newsletter



'Aspiring to be awesome. Making everyday build a brighter tomorrow.'

What a term! We've had lots going on this term and it has been amazing being part of it. We're seeing the children grow in confidence every day, which is truly lovely to watch!

Faces around school...

There are often too many faces and too many names to remember so let's have a look at who is part of our inclusion team:



Mr Bywaters
Deputy Head Teacher
and Inclusion Manger

Mr Cheetham
Inclusion Teaching
Assistant

Mrs Holmes
Deputy Safeguarding
Officer

Miss Rudge
Special Educational
Needs Coordinator

Mrs Wragg
Home School Link
Worker

Inclusion Suite

Our Inclusion Suite is used for breakfast intervention to support children, who may need extra transition into school. We also run our C.L.I.M.B group, based on the needs of the children, during the morning session and in an afternoon interventions take place to support children with additional needs. Children from all year groups use this provision. Mr Cheetham, Mrs Holmes, Miss Rudge and Mrs Wragg are all based in the office next to the inclusion classroom. If you have any questions around special educational needs, attendance or safeguarding, or even just want to have a chat, please don't hesitate to pop by.



IDL Cloud

IDL Cloud is still running across school. If your child would like to access it at home, please use the following link:
www.idlcloud.co.uk

Sensitivity

Please be aware that the parents of children with SEND are facing a number of challenges, so be sensitive. Listen to one another and be supportive! All our children are special. Some have challenging behaviours. They are not just 'naughty'.

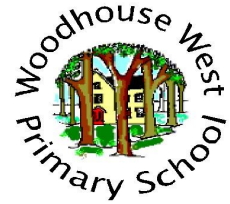
Relaxation time!

Miss Rudge is now delivering some calm sessions, which include gentle exercises and breathing techniques to help us stay on task throughout the day.





Attendance Spring 2 2018 Newsletter



'Aspiring to be awesome. Making everyday build a brighter tomorrow.'

Website

Please keep checking our website for new information around SEND.

SEND Ten!

Every Thursday, class teachers are available for ten minutes after school. This is to allow parents of children with SEND, time to discuss any current interventions taking place or any concerns a parent may have.

SEND Targets

Targets for children with SEND are available in their class drawers. These are reviewed half termly and updated termly. Please discuss with your child's class teacher if you have any questions around these targets.

Interventions

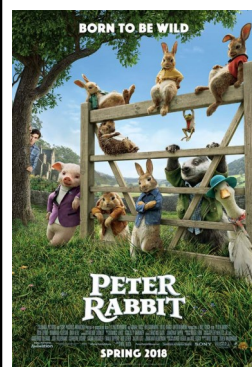
Last year, we handed out booklets with information around the interventions taking place in school. If you would like a booklet, these can be found at the office. The booklet is designed to explain the content and purpose of interventions your child has taken part in or will be taking part in this year.

Beighton Magpies Inclusive Football

Beighton Magpies are running an inclusive football session suitable for all children with additional needs. There are some new sessions beginning Wednesday 28th March between 6-7pm. The sessions are run by FA qualified coaches. It will be taking part at St. Georges Park, Westfield, S20 8FA for ages 7-16.



If you require any further details, please contact Paul Roberts: 07952 111584



Friendly Screenings!

Email autismfilms@dimensions-uk.org for more information!

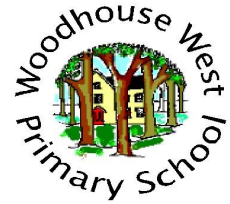
Cineworld's next autism friendly film screening is Peter Rabbit on Sunday 1st April 2018.

Odeon's next autism friendly film screening is Peter Rabbit on Sunday 18th March.

Both cinema's also have hearing loop systems fitted for those with hearing impairments.



Attendance Spring 2 2018 Newsletter



'Aspiring to be awesome. Making everyday build a brighter tomorrow.'

Attendance

What a term it has been! Ofsted were very impressed by our efforts around attendance and making sure children were in school and on time every day. Let's keep working hard to reach our target.



Illness

It is the responsibility of the parent to ring every day of absence, if your child is too ill to come to school.

Our attendance target is 96%

Last half term during Spring 1 our attendance was: 93.2%

What's in the box?

Every week, the class with the highest attendance will win the contents of Mrs Wragg's box! What do you think is in the box this week?



Daily Dip!

Every child, who has arrived on time, has the chance to win the daily dip! One child from each class is chosen daily.

Early Bird Phone Calls...

We offer phone calls from 7:30am. If you feel you would benefit from this, please contact Mrs Wragg.



Walking Bus

Our walking bus meets at the co-op in Woodhouse village a 8am.

Stop 1- 8:00am Co-op

Stop 2- 8:04am Cemetery Gates

Stop 3- 8:09am New cross way bus shelter

Stop 4- 8:10am Hardcastle/Stradbroke Road

Stop 5- 8:13am Southsea Road/Corwan Place

Stop 6- 8:15am Southsea Road/Wolverley Road

There are spaces available on our walking bus! Please contact Mrs Wragg for further information.