

Empowering &
Preparing for
Success in a changing world.



Head Teacher Mrs S. Edwards

Eastlands Primary School

May 2018

EPS Attendance
 Target **96.5%**

Attendance in April:

R— 98.7%

Y1— 98.5%

Y2—98.8%

Y3—96.9%

Y4— 97.4%

Y5—96.8%

Y6— 92.9%

Overall attendance for the whole school for April was averaging at 97.2%.

This is exceeding our target.

Please help us to maintain this high % by ensuring your child attendance is good or better.

Is your child's class

“On time at 5 to 9” ?

School opens at **8.45am** when children can go to their classrooms and get ready for the start of the school day. Please make sure that your child is in their class, ready to work by **8.55am** at the latest.

LOOK OUT FOR: Science Week

Science week - Monday 11th June to Friday 15th June will be Eastland's Science week. The theme for the week is **EXPLORATION**



If we have parents who work in the field of science /health please talk to Miss Towers with any ideas you may have or email admin with your details. Thank you.

Term dates.

7th May—Bank Holiday

14th May—Year 6 SATs week

28th May—Half Term Week

8th June—Year 6 to Skern

28th June (Year 3R, 4,5,6) & 2nd July (N, R, Year 1, 2, 3T)Termly Learning Conferences

29th June - PSA summer fayre

21st June—Sports Day

18th June—New Reception parents evening

Happy Birthday to all our children who celebrate their birthdays in May



Rec: Gracie

1: Leah, Samuel

2: Sienna, Daniel

3: Tharosh, Oliver, Omshri, Leah

4: Ezme, Sienna, RoaldsMarsels

5: Rocco, Krisha, Daniils, Harry

6: Talia

Punctuality facts.

Once again I request that parents do not make routine appointments during school hours.

Thank you for your continued co-operation.

Why is punctuality so important?

Good school attendance includes being there on time. Punctuality is a life skill. The habit of good punctuality at school will help your child throughout their education, into adult life and the work place.

Did you know that...

5 minutes late each day
 = **3 days** lost over a year

10 minutes late each day
 = **6.5 days** lost over a year

15 minutes late each day
 = **10 days** lost over a year

20 minutes late each day
 = **13 days** lost over a year

30 minutes late each day
 = **19 days** lost over a year

Safeguarding is Everybody's Responsibility

Eastlands Primary School

Lansdowne Place, Rugby CV21 3RY Tel: 01788 57328

Eastlands Primary School

School Vision In Action

Our 3rd aim is to praise hard work, determination and having a positive attitude. Previously in newsletter I have spoken of the reward system we use to recognise achievement.



Year 2—Noah. 'I did neat handwriting'.

Year 2—Zayan 'I can learn new interesting words in English.'



Year 2—Jacob—'In PE we run around and exercise. That's positive'.

We also have embedding school language that talks of 'Secrets of Success' which encourages determination, perseverance and taking responsibility for your own learning. This is displayed in each classroom and in the hall.

Governor Profile

My name is Elizabeth Olupitan, I was co-opted onto the governing body at Eastlands School in December 2017. I am new to the role and now learning to effectively assist.

I arrived at Hillmorton in August 2017 with my husband and twin babies and have found here and the school warm and welcoming.

My desire to be part of the governing body is from a genuine enthusiasm about the development of children into value adding citizens of the community. I am delighted to see this enthusiasm shared amongst the staff and governors.

I hope that my skills will be useful to support Mrs Edwards, the staff and governors as they continue to maintain the good school and develop to ensure the school goes from strength to strength.

Ms Elizabeth Olupitan (Co-opted Governor)

Eastlands Primary School



A Royal Wedding Celebration



Thursday 17th May - The day before children will be making table decorations, place cards, bunting and decorating celebration cup-cakes.

We need parents help too!
In the week beginning 14th May could you send in donations of plain cupcakes for children to decorate in readiness for Friday.



On **Friday 18th May** we would like to celebrate the royal wedding in school.
Children are asked to dress as if attending a wedding.
During the day they will be studying the Royal family

There is also talk of a special royal visitor popping in to help us celebrate.



The school kitchen will be providing a royal lunch for all children to purchase on the 18th.
A flyer, with more details, is to be sent out shortly.

Eastlands Primary School

TAGBTIGERS
JUNIOR TAE KWON-DO

RESPECT - FOCUS - TEAMWORK - FITNESS - CO-ORDINATION - DISCIPLINE - CONFIDENCE

T.A.G.B.
TAE KWON-DO
ESTABLISHED 1983

THINKING ABOUT DOING SOMETHING NEW
FUN & REWARDING
JOIN US, FREE TRAINING AVAILABLE

Thursday evenings at Eastlands Primary School 6—to 6.45pm

Tel 07853338732 Email p4tkd@sky.com

Instructor — Pat Carter

Community

Dressing up on World book Day raised £128.70 for Book Aid International.

Marie Curie daffodils were purchased by the school for Mothering Sunday.

PSA Fundraising.

Our Bag2School collection in April raised £56. Thank you to everyone that filled a bag! The next collection date is 9th October 2018. For more information on the Bag2School scheme visit <http://uk.bag2school.com/> . Thank you.

School Twitter Feed

Our school Twitter account is used as a commentary on events and activities held in school. I hope you find it useful.

Please note Twitter is used for sharing information from school only.



Safeguarding is Everybody's Responsibility

Eastlands Primary School



Interested in being more involved in the way children and young people's mental health services are shaped in Warwickshire?

We are looking for parents/carers who would like to participate in the commissioning of services and dialogue between children's mental health commissioners and key stakeholders, and to make recommendations to the Strategic Partnership Board on service developments.

Please contact— andrewsjurseth@warwickshire.gov.uk

01926 742336

As soon as possible

Eastlands Primary School

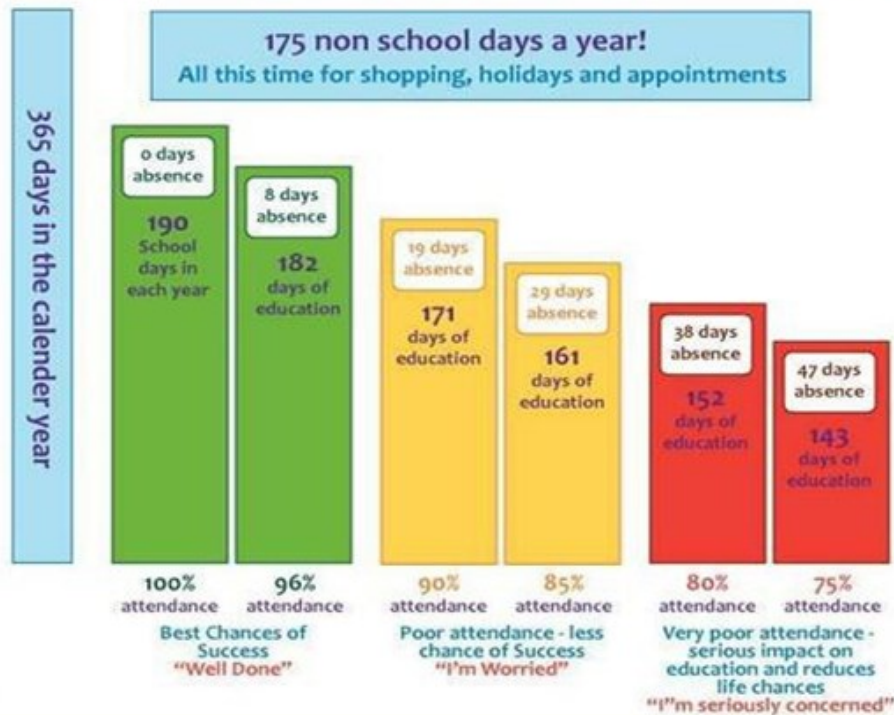
School Closure in Emergency —We If we have an emergency school closure or part day closure you will be informed through Rugby FM, our school website, on www.warwickshire.gov.uk/schoolclosure and by text message as soon as possible.

ATTENDANCE TARGET

Our school attendance target is:- **96.5%**

Good Attendance Means...

being in school at least 96% of the time. This means 8 Days Off!



Computer Fun

This month's recommended website for children:-



Ks1 [story time](http://www.storyteller.net)

Always supervise your children when they are using the internet



Ks2 - [storyteller](http://www.storyteller.net)

Eastlands Primary School

LEAVE OF ABSENCE DURING TERM TIME 2016-17 - UPDATED INFORMATION FOR PARENTS

The Supreme Court recently reached a decision in the case of *Platt v Isle of Wight Council* which has clarified the law on unauthorised leave, including holidays, during term time. The parents of children of compulsory school age are required to ensure that they attend school on a regular basis. The Supreme Court has made clear that attending school 'regularly' means that the children must attend school on every day that they are required to do so. As such, the parents of any child who are absent from school without authorisation for any length of time are likely to be considered as committing an offence under s444 of the Education Act 1996.

Head Teachers retain the ability to authorise leave in accordance with the Education (Pupil Registration) (England) Regulations 2006. When considering such requests for a leave of absence, the school are obliged to act within the law. Head Teachers may not grant any leave of absence during term time unless there are exceptional circumstances relating to the application. If the leave is granted, head teachers are able to determine the number of school days a child can be absent for.

It is for the Head Teacher to decide what is 'exceptional' and it is at their discretion if the circumstances warrant the leave to be granted. The school can only consider Leave of Absence requests which are made by the 'resident' parent.

Each application for a leave of absence will be considered on a case by case basis and on its own merits. Where applications for leave of absence are made in advance and refused, the child will be required to be in school on the dates set out in the application. If the child is absent during that period, it will be recorded as an unauthorised absence, which may result in legal action being taken against the parent(s), by way of a Fixed Penalty Notice.

Failure to make an application for leave in advance can also result in a Fixed Penalty Notice being issued to the parent(s).

All matters of unauthorised absence relating to a Leave of Absence will be referred to the Attendance, Compliance and Enforcement Service of Warwickshire County Council.

It is important to note, Fixed Penalty Notices are issued to each parent of each absent child, (for example 2 children and 2 parents, means each parent will receive 2 invoices in the amount of £120 each, totalling £240 for both children, this is reduced to £60 per child if paid within 21 days).

Where a Fixed Penalty Notice is not paid within the required timeframe as set out on the notice, the matter will be referred to Warwickshire County Council's Legal Services to consider instigating criminal proceedings under S444 Education Act 1996.

Fixed Penalty Notices are issued in accordance with Warwickshire County Council's Code of Conduct for Penalty Notices.

We greatly appreciate parental support to reduce the total amount of days lost due to holidays. We are committed to working in partnership with you to enable your child to reach their academic targets and to support their social development. For this to happen we need to keep individual attendance as high as possible - we all need to play our part.

Your child's progress academically as well as socially is our shared priority