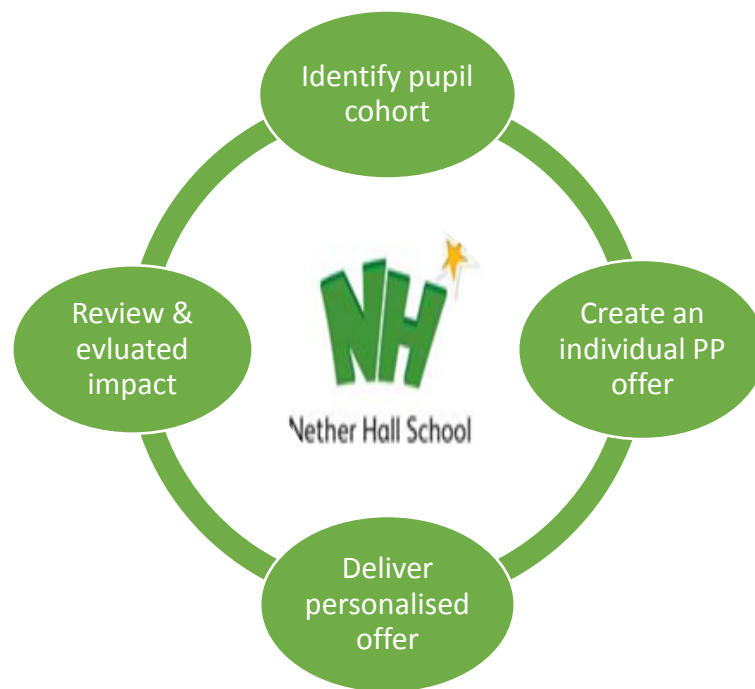
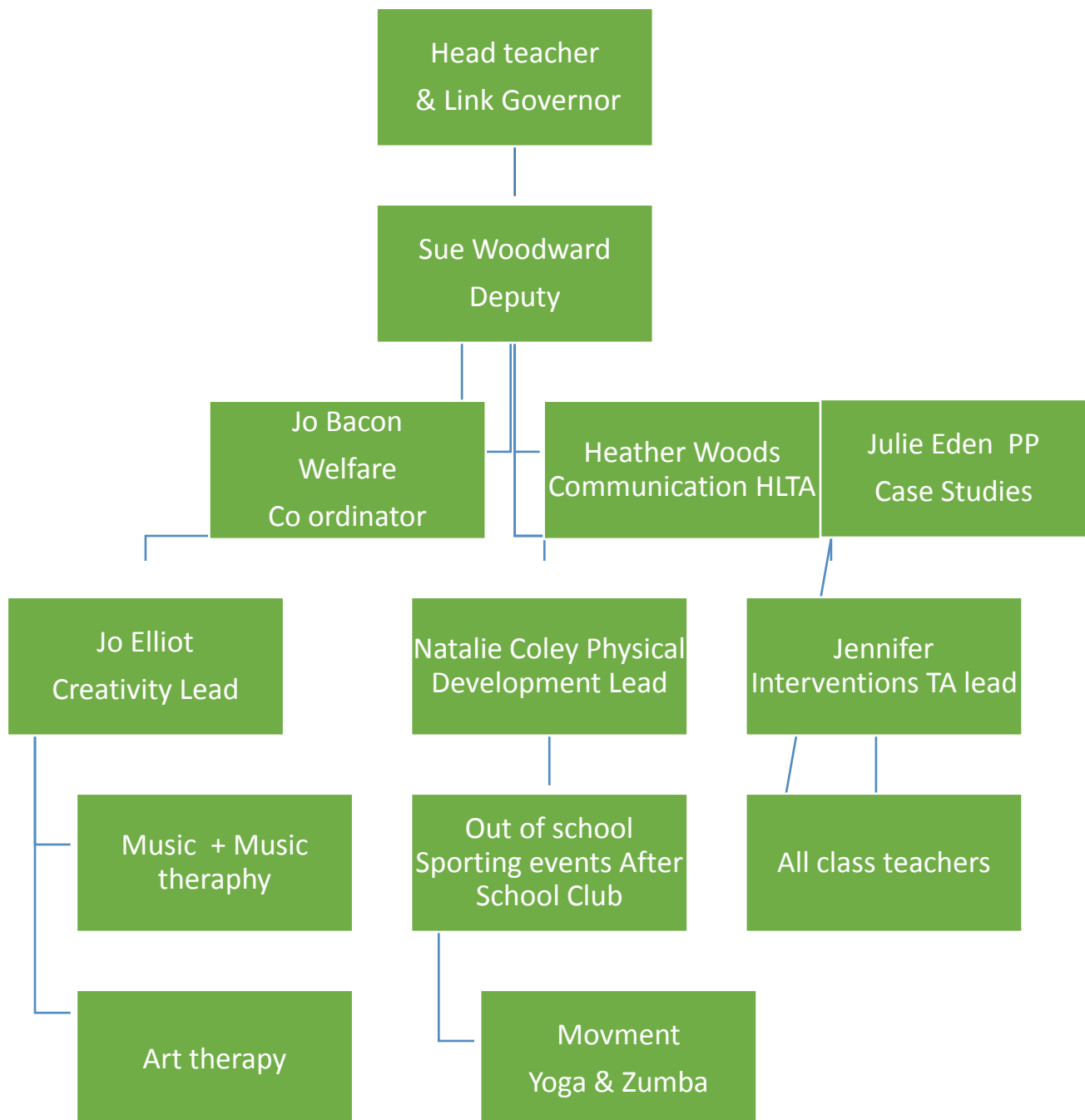
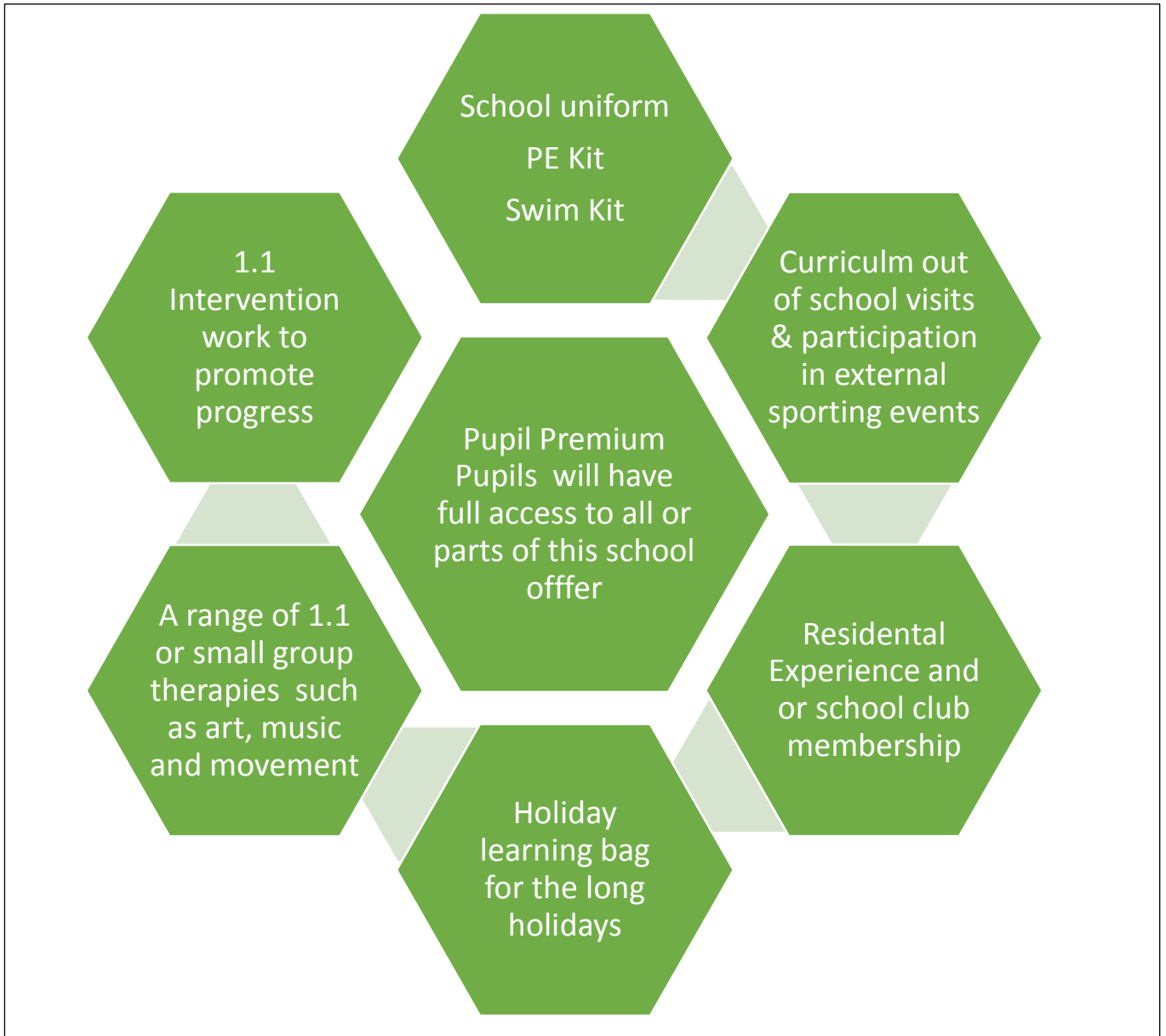


## Pupil Premium Process 2018-2019





## Nether Hall School -Pupil Premium Offer 2018-2019



At the start of each new school year we will contact you to inform you **if your child is eligible for the pupil premium grant.**

**If your child qualifies for the pupil premium grant they will have access to the support we as a school can offer as shown in the diagram above.**

**Schools must account for the spending of their pupil premium grant in a very transparent and comprehensive manner.**

**If you have any queries regarding pupil premium grant please visit our website <http://www.netherhall.leicester.sch.uk/>**

**Or you may contact Sue Woodward Deputy Head Teacher at Nether Hall School.**