

Welcome to Year 2

Wood End
School

Year 2 Staff.....

- ◇ Mrs Smart
- ◇ Miss Payne
- ◇ Mrs Middleton (HLTA)
- ◇ Mrs Marchon (TA)
- ◇ Mrs Dona-Paz (PPA Cover)

Just before we begin...

- ◇ Please ensure that names are in EVERYTHING
- ◇ Vast amount of lost property
- ◇ Send coats EVERY DAY.
- ◇ A pair of wellies may be kept in school for wet weather.
- ◇ Named water bottle.
- ◇ Painting apron
- ◇ P.E. kits in school every day
- ◇ Book bags each day

Year 2 ...

- ◇ Holly and Hawthorn are found in Key Stage 1 building
- ◇ The bell will ring at 8:50 and their teacher or teaching assistant will meet them on the appropriate playground
- ◇ Children to line up quietly and independently in alphabetical order

Expectations ...

- ◇ Children to be encouraged to take responsibility for their own possessions – personal organisation
- ◇ Wear appropriate uniform – no jewellery
- ◇ If an issue has arisen please write a note to the teacher but not in the reading record
- ◇ Speak to class teacher, then KS 1 leader if necessary before head teacher
- ◇ PE: trainers, indoor kit, tracksuit
- ◇ Rewards : stickers, house points, certificates

SATS

- ◇ We keep them very low key
- ◇ Children are continually assessed so we attach a great deal of importance to teacher assessment
- ◇ Children assessed in Maths, Reading and Writing (including Spelling)
- ◇ SATS form part of our assessment
- ◇ Children unaware

Behaviour

Our behaviour system at Wood End is called 'Good to be Green' and is based on green, yellow and red cards.

Children who behave appropriately in class will remain on green and be rewarded with Golden Time each week on a Friday afternoon.

If children break class or school rules, they will be moved to a yellow or red card accordingly. This may mean missing some of their Golden Time.

We are sure that all of our children in Year 2 will show us their best behaviour at all times!

Reading

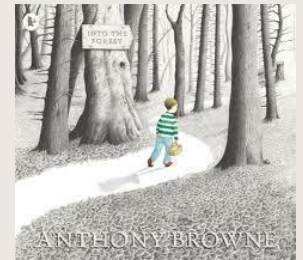


- ◇ Please hear your child read each day at home
- ◇ Please sign reading record
- ◇ Children to be heard by teacher weekly during Guided Reading and one more designated adult – maybe more
- ◇ Parent helpers – impact
- ◇ Parent helper meeting
- ◇ Books changed Mondays, Wednesdays & Fridays
- ◇ Please correct mispronunciations eg th/f/v
- ◇ Moving through the reading scheme : comprehension, character profiles, reviews

Writing



- ◇ Superhero comic writing
- ◇ Traditional Tales
- ◇ Poetry – calligrams/list
- ◇ Recount of Florence Nightingale
- ◇ Focus on basic punctuation, conjunctions, developing vocabulary and spelling
- ◇ Spelling – high frequency and common exception words which will be on our website



Spellings/Handwriting

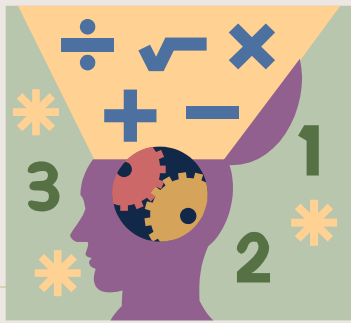
- ◇ Spellings will be taught during Phonics lessons.
- ◇ Children will not be bringing spelling lists home.
- ◇ Children will be continually assessed
- ◇ Joined handwriting encouraged now
- ◇ May be a little untidy initially!
- ◇ Do not worry about untidiness
- ◇ Encourage at home!

Show & Tell



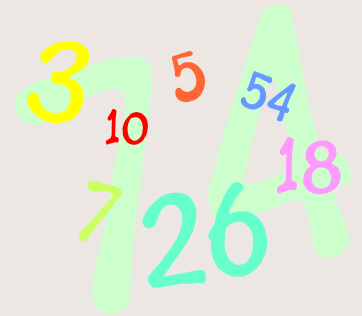
- ◇ Rota of themes
- ◇ Each theme lasts for 2 weeks
- ◇ Dates have been given and emailed, website
- ◇ Flexibility
- ◇ Part of homework and assessed as part of Speaking & Listening
- ◇ Needs to be short – approximately 2 minutes
- ◇ Children enjoy preparing and presenting these
- ◇ Prompts required rather than scripts
- ◇ Country presentations to be completed in May/June





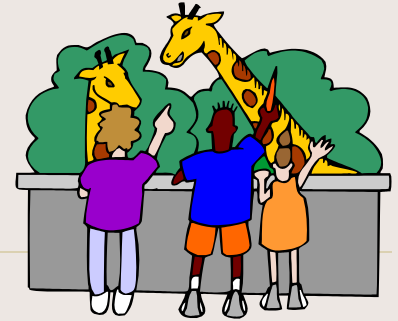
Maths

- ◇ Times tables : 2x 5x 10x 3x 4x. Learn through chanting, CDS, songs
- ◇ Addition/subtraction to 100 and beyond
- ◇ Place Value
- ◇ Simple division and fractions
- ◇ Money
- ◇ Time
- ◇ Problem solving and reasoning
- ◇ Practical situations would be helpful
- ◇ Homework to be given after half-term





Exciting Events....



- ◇ Superhero Day – Today!!
- ◇ History Off the Page: Florence Nightingale, History of Toys
- ◇ Harvest Assembly
- ◇ Class Assemblies
- ◇ Christmas Performance
- ◇ Whipsnade Zoo
- ◇ Country Dancing
- ◇ Visit to St Alban's Cathedral
- ◇ Leavers Assembly



Home/School Partnership

Consultation evenings are held in the Autumn and Spring Term.

Whole school **Open Evening** takes place in the Summer Term.

You will receive an **annual report** in July.

Your child's books will be sent home regularly.

We operate an **Open Door policy**. Should you have any concerns or problems do not hesitate to come in a speak to us, preferably at the end of the day.

And Finally...

- ◇ If you would like to come in to school to help out in Year 2 we are always grateful for volunteers! However you will need to be DBS checked (forms available from the Office).
- ◇ Parent helpers need to be available on a regular basis to be able to have a positive impact on learning
- ◇ If you have any worries or concerns please come in and see us and we will do our best to help you.
- ◇ We are looking forward to working with you and your child.

