



September 2018

# CASTLE HILL PRIMARY NEWSLETTER



## KS2 Hike to the Pike

KS2 had a very invigorating Hike to the Pike today. It was lovely to see the children so keen and ready to go. Year 6 children took the opportunity to use Ordnance Survey maps to track the route that was being covered. The weather was perfect. Many parents came to help too, and it was a lovely family event, especially the picnic at the top. It was great to get out of the classroom and explore the impressive landscape in our local area.



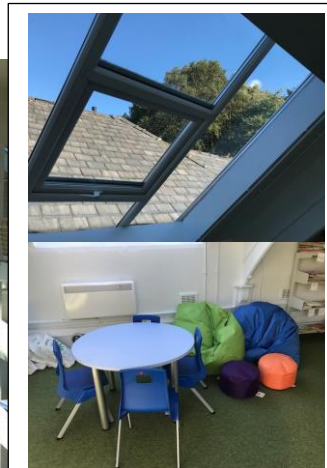
## KS1 Foraging Walk

The whole of KS1 had a very interesting walk in our local area. They walked along the canal and gathered lots of different leaves and twigs. They also foraged for blackberries, elderberries and other incredible edibles. They then painted with them!



## New Library

Our old ICT suite has been renovated over the summer holidays and it is now going to be our new library. The official opening will be in November and in the meantime we are busy organising the books around school!





# CASTLE HILL PRIMARY NEWSLETTER



September 2018

## Reminders

Please can I remind parents not to park on King Street. There have been a number of complaints and Calderdale Council is looking into the situation. Should you wish to contact Calderdale yourself, please call:

Linda Hemingway - Road Safety  
01422 392803  
1<sup>st</sup> Floor  
Westgate House  
Halifax  
HX1 1PS

## Contacting Members of Staff

Please can I remind parents to send all correspondence (marked confidential if necessary and for the attention of the member of staff) via the office

[admin@castlehill.calderdale.sch.uk](mailto:admin@castlehill.calderdale.sch.uk).

This will ensure that the email is seen and dealt with as soon as possible.

## KS1 LEGO Arctic Challenge



Key stage 1 have been working on a challenge that has been delivered by LEGO Arctic Expedition city! They are making Arctic landscapes and building models that can cope with the wintery terrain. They are also using mapping skills and knowledge of the Arctic to help them with their decisions.

## Year 6 Bikeability

The children from year 6 took part in Bikeability this week. They had to carry out a bike check first to see if their bikes were in working order. They then checked their helmet and make sure it was securely fastened. The children were then tested on their ability to cycle in a straight line and on their road safety knowledge, including how to brake safely. They then applied all they had learned in the quiet back streets around Todmorden.





September 2018

# CASTLE HILL PRIMARY NEWSLETTER



## Dates for your Diary

Thursday 4 <sup>th</sup> October	Pm Year 2 Multi Skills - Todmorden Sports Centre
Thursday 4 <sup>th</sup> October	Todmorden High School Open Evening 5pm-8pm
8 <sup>th</sup> - 12 <sup>th</sup> October	Scholastic Book Fair
Tuesday 9 <sup>th</sup> October	Nasal Flu Vaccinations Reception - Year 5
Thursday 11 <sup>th</sup> October	Pm Cross Country - Centre Vale Park
Thursday 11 <sup>th</sup> October	Nursery Open Day 9:30-11:30 / 13:15-15:00
Tuesday 16 <sup>th</sup> October	Harvest Festival Assembly - Reverend Nancy
Tuesday 16 <sup>th</sup> October	Pm 4/5C Zoolab visit
Thursday 18 <sup>th</sup> October	Individual Photos
Thursday 18 <sup>th</sup> October	Parents' Evening 15:30-19:00
Monday 22 <sup>nd</sup> October	3.30pm PFA Hallowe'en Bake Sale (note change of date)
Tuesday 23 <sup>rd</sup> October	10am Year 5 Dementia Friendly Event at Todmorden Fire Station
Tuesday 23 <sup>rd</sup> October	Parents' Evening 15:30-19:00
Thursday 25 <sup>th</sup> October	Am U11 Athletics - Todmorden Sports Centre
Friday 26 <sup>th</sup> October	Deadline for Secondary School Applications
Friday 26 <sup>th</sup> October	18.45 Hippodrome Trip: Wind in the Willows
Friday 26 <sup>th</sup> October	Break for Half Term
Monday 5 <sup>th</sup> November	INSET DAY 2 - SCHOOL CLOSED
Tuesday 6 <sup>th</sup> November	Back to school
Friday 16 <sup>th</sup> November	Nursery parents' Reception online application day
Friday 16 <sup>th</sup> November	Tom Palmer (author) visiting school
Wednesday 21 <sup>st</sup> November	6GP Todmorden Climbing Wall
Thursday 22 <sup>nd</sup> November	Pm - Year 4 Todmorden Sports Centre
Monday 26 <sup>th</sup> November	1.30pm Enterprise Open Afternoon: All parents welcome
Thursday 29 <sup>th</sup> November	Pm - Year 3 Todmorden Sports Centre
Friday 7 <sup>th</sup> December	3.30pm - 5.00pm PFA Christmas Fayre (note change of date)
Thursday 13 <sup>th</sup> December	6.00pm Key Stage 2 Carol Concert - St Mary's Church
Monday 17 <sup>th</sup> December	4.00pm Nursery Christmas Performance
Monday 7 <sup>th</sup> January	Back to school

## Harvest Festival

On Wednesday 16<sup>th</sup> October, Reverend Nancy White will be leading our Harvest Festival. We will be donating to our local community and Stanley Cryer Court. Donations of food or any other items, such as toiletries, would be very gratefully received. Please bring items into school on Monday 15<sup>th</sup>. Thank you in advance.