

English

Literacy and Language: Reading and writing - phonics/spelling, vocabulary, handwriting, grammar and punctuation through the fiction genre of science fiction/fantasy stories 'A Tale of Two Robots' and the non-fiction genre of discussion texts.

Focus: determiners, conjunctions, adverbs and adverbials

Recap: inverted commas, dictionary, openers

Science

Forces and Magnets:

* Explore what forces are.

* Notice that some forces need contact between two objects.

* Compare how things move on different surfaces.

* Explore how magnetic forces work.

* Identify magnetic materials

PE

Real PE - Social Skills

Dance: * Repeat, remember and perform phrases.

* Improvise freely and translate ideas from a stimulus into movement. * Share and create phrases with a partner and small group.

Geography

* Features of villages, towns or cities. * Explain why people may be attracted to live in cities. * Find UK cities on a map. * Explain why people may choose to live in one place rather than another.

Music

Remembrance and Christmas themed singing - accurate pitch and expression

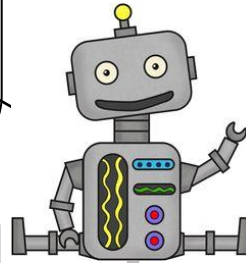
Christmas themed composition - clear notes, repeated patterns, different elements, moods

Weekly brass lessons

SEAL

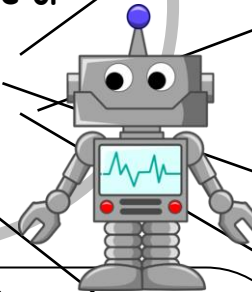
Getting on and falling out

Friendship. Managing feelings. Resolving conflict. Working together



Autumn 2 2018

Robots - reliable or reckless?



History

Not a focus this half-term

Art and Design

Not a focus this half-term

DT

Design, make and evaluate a robot.

* Select tools and techniques. * Work accurately to measure, make cuts and holes. * Evaluate products for their purpose and appearance.

PSHE

Mental Health and Emotional Wellbeing:

* Celebrating achievements and setting personal goals

* Dealing with put-downs

* Positive approaches to dealing with set-backs

Our Value

Forgiveness

RE

Christianity - Incarnation: The story of the birth of Jesus and the link with Incarnation

MFL (French)

Fruit and food (link with number and colour); Christmas

The 5 Rs

Relationships; Resilience; Risk Taking; Resourcefulness; Reflection - ongoing with a particular focus in Nurture Group sessions

Maths

Geometry - 3D shapes (Y3), quadrilaterals and triangles (Y4), perimeter (Y3+4)

Measures - telling the time

Ongoing: Place value and Calculation targets

Parents/Trips/Visitors

Wednesday 7th November - Parents' Evenings

Thursday 8th November - Parents' Evenings

Thursday 8th November - Remembrance Service at St. Mary's

Friday 9th November - School photographer

Thursday 6th December - Advent Service at St. Mary's

Thursday 20th December - Christingle Carol Service

Monday 17th December - Topic Detectives homework due

Friday 21st December - Child of Achievement assembly; last day of term

Monday 7th January - Training Day - School Closed

Tuesday 8th January - Back to School

Computing

Use a range of software; design and create content; present information; manipulate and improve digital images; search for information on the web in different ways