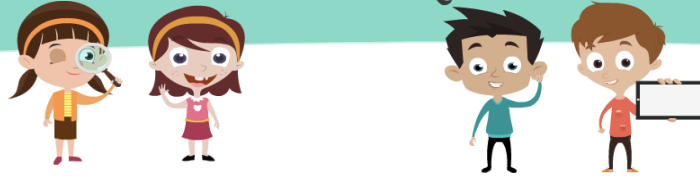


FOOD

in the FAMILY home Questionnaire



Information Sheet

Please take time to read this information carefully, and feel free to ask us any questions. We will do our best to explain and to provide any information you require.

What is the purpose of the study?

We are conducting this research to find out more about food in the home environment. In particular, we are interested in the views of parents of primary school aged children, as we are aiming to explore food in the family home, shopping & cooking, and also children's eating habits.

Who is organising and funding this study?

This study is organised by the School of Food Science and Nutrition at the University of Leeds. No funding from outside parties is being received.

Taking part is voluntary

It is up to you to decide whether or not to take part. If you do decide to take part, you can still withdraw at any time and without giving a reason.

What does taking part involve?

You will complete an online questionnaire that will take you about 8-12 minutes. In the questionnaire, you will be asked about food e.g. food preparation, eating out, food shopping, what foods your child eat etc.

Are there disadvantages or risks to taking part?

We do not anticipate that there are any risks from taking part. If you have any concerns please contact me.

Are there possible benefits to taking part?

The results of this questionnaire will help us to understand food in the family home and better understand children's food habits.

Will taking part in this study be confidential?

The data from the questionnaire will be securely stored and only available to the research team. Data will be anonymous and you will not be identified in any reports or publications resulting from the research.

What will happen to the results of the research project?

The findings from this study will be written up as a report and may be published more widely e.g. in an academic journal. The published work may include quotations from the questionnaire results, but these will be anonymous and you will not be identified in any report or publication.

Who has reviewed this study?

This study has been reviewed by a Faculty Research Ethics Committee at The University of Leeds.

If you would like more information or have any questions or concerns please contact:

**Thank you for taking the time to read this information sheet.
We are grateful to you for thinking about taking part in this study.**

Rosie Mark

Email: fs15rm@leeds.ac.uk

Dr Hannah Ensaff

Tel: 0113 34 33418

Email: h.ensaff@leeds.ac.uk

School of Food Science and Nutrition, University of Leeds, LS2 9JT