



MARVELLOUS  
ME

MARVELLOUSME

PARENTAL  
ENGAGEMENT IS  
MORE THAN  
HELPING WITH  
HOMEWORK

Somewhere between 75% and 85% of a child's waking hours are spent outside of school

Parental engagement in the education and development of children improves their attainment

Research shows that children's progress can be hindered by a lack of parental engagement

# HOW EFFECTIVELY ARE WE ENGAGING PARENTS IN SUPPORTING THEIR CHILDREN'S DEVELOPMENT?

Facebook

Newsletters

Homework

WHY  
MARVELLOUSME?

Encourages communication  
between children and parents

Fosters high self esteem and  
confidence

Improves children's  
interaction with their peers

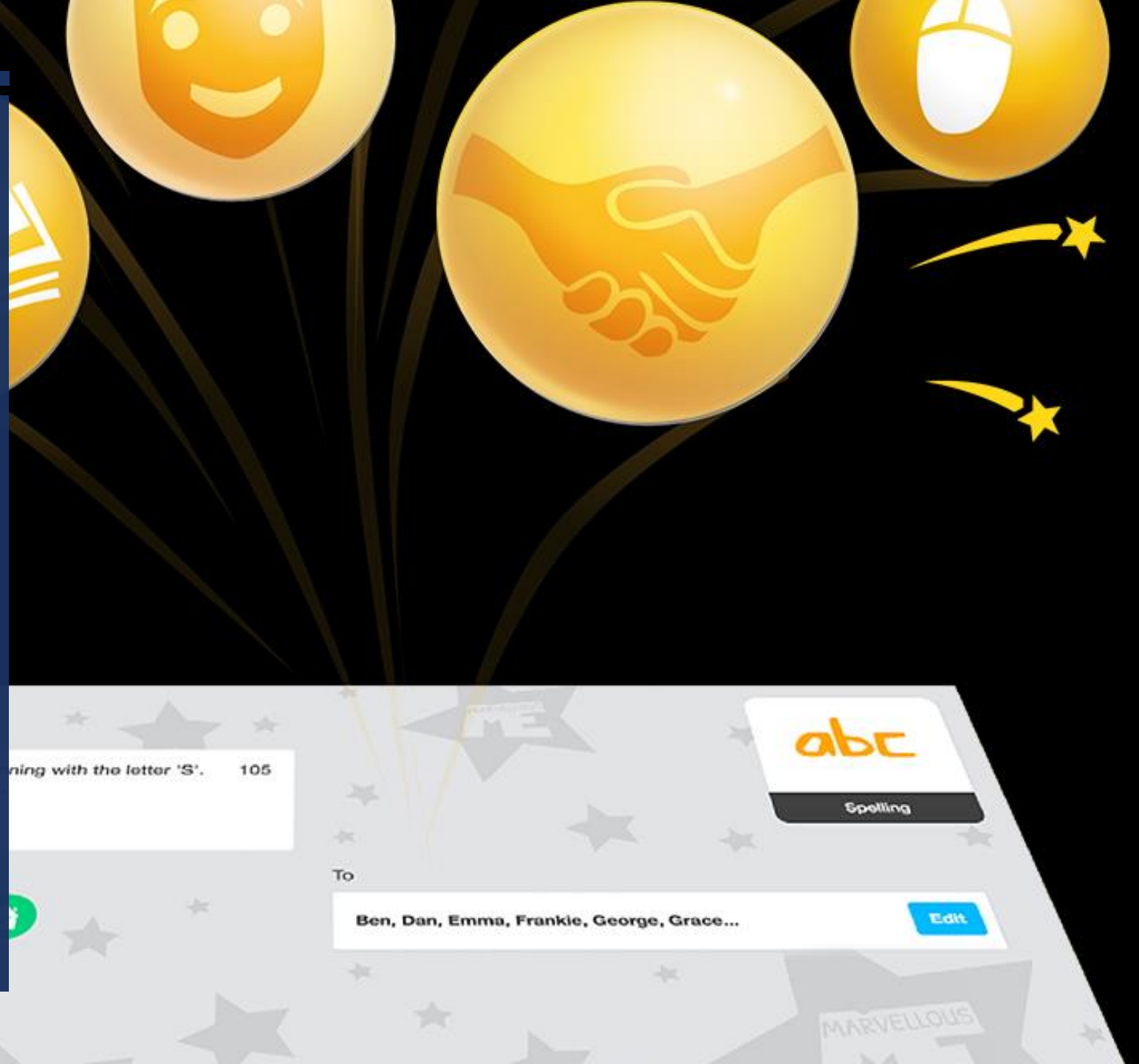
## WHAT IS MARVELLOUSME?

- **‘MarvellousMe is a game changer for parent engagement.’**
- Children are happier. Their learning and character skills improve.
- Designed by a once disengaged dad, MarvellousMe engages parents in their children’s learning and character development. It boosts family conversations about school and makes it easy for parents to help their children’s education and say: ‘Well done!’



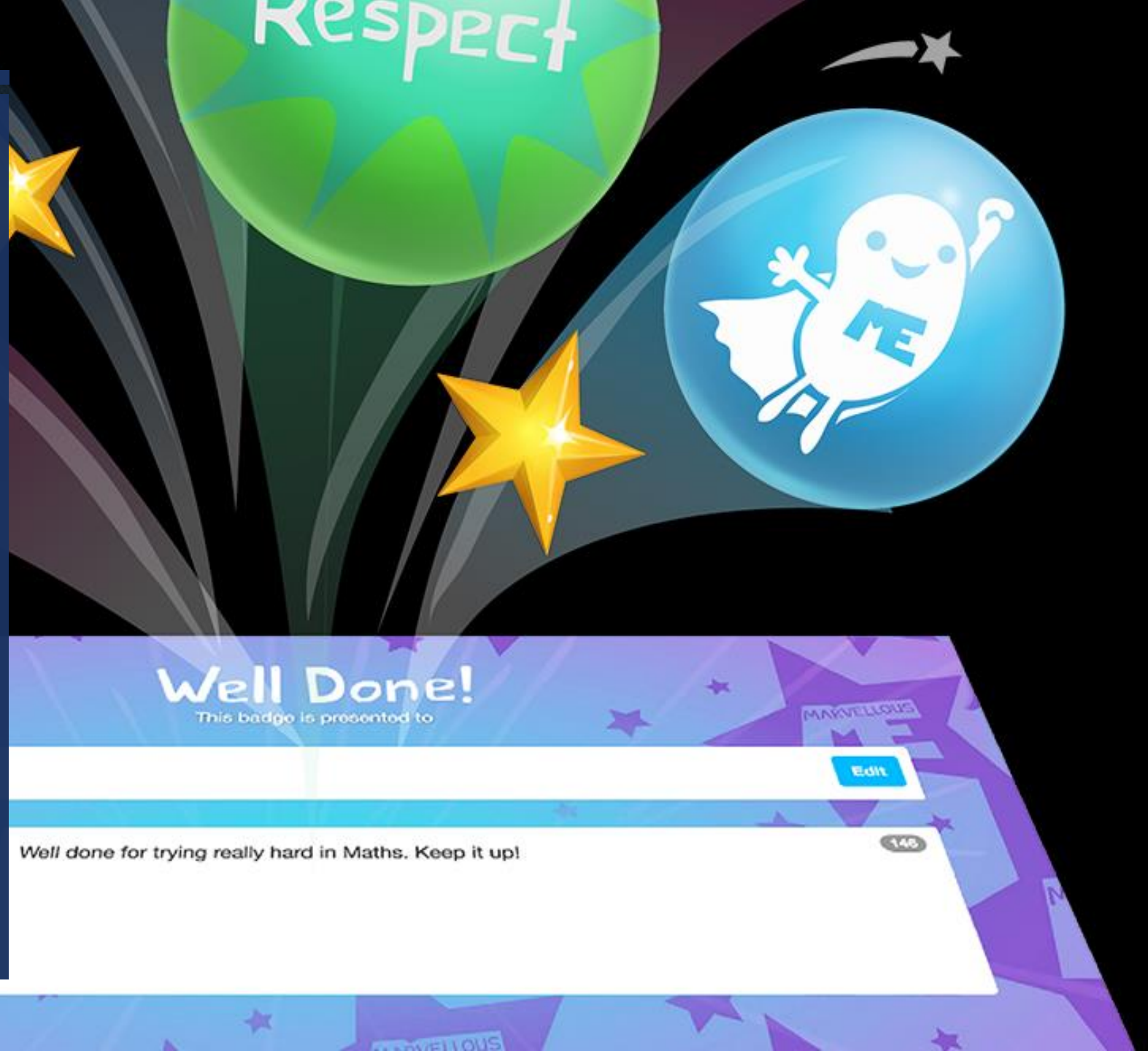
## POST ACTIVITIES ABOUT CHILDREN'S LEARNING - SET HOMEWORK

- MarvellousMe activities tell parents what their children are learning across the curriculum. It's a digital upgrade to sending postcards; more effective, quicker, and no paper and postage costs.
- Most teachers post them 2-3 times a week, in plenaries to consolidate learning.



## AWARD BADGES AND SHARE THEM WITH PARENTS

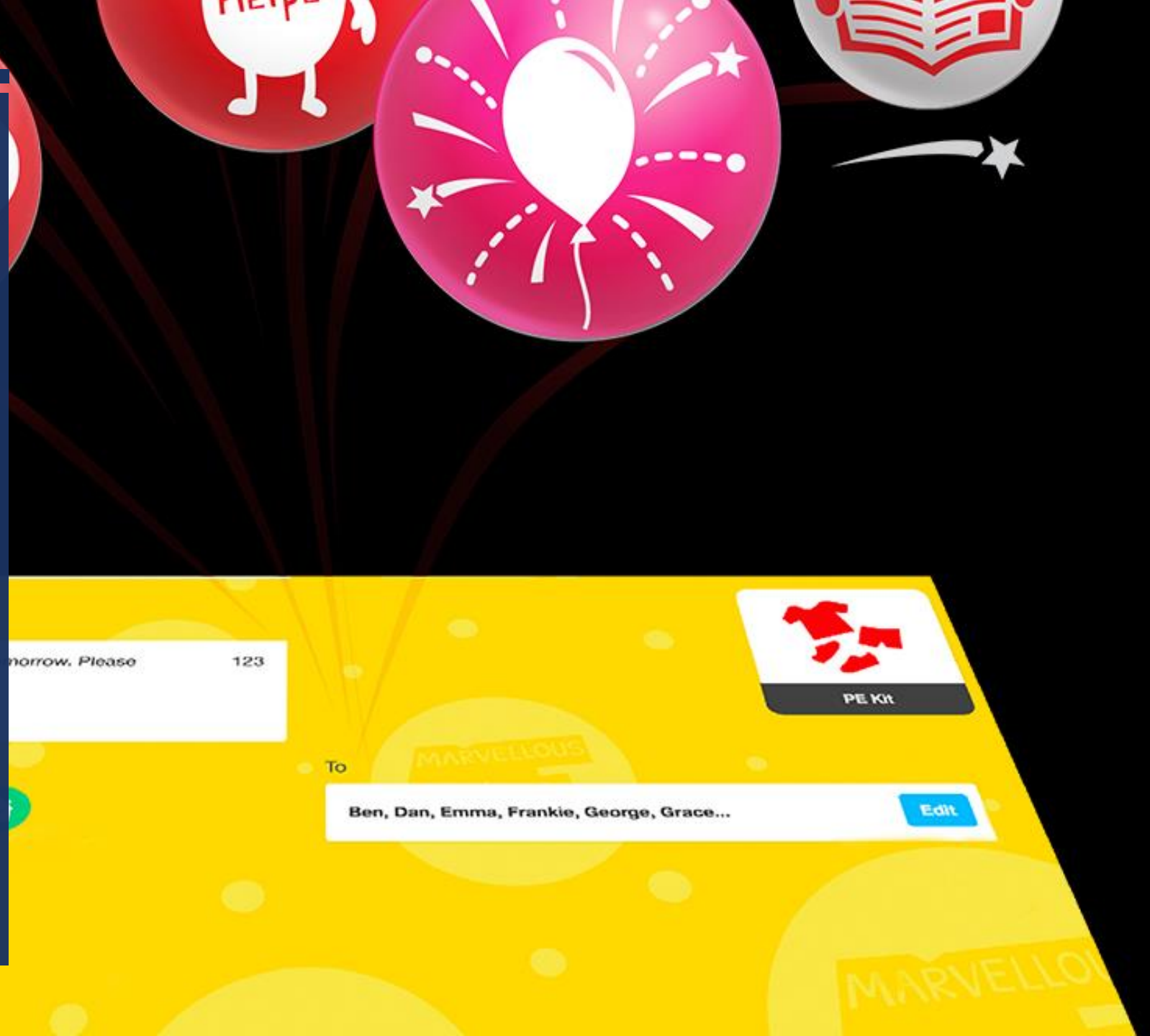
- MarvellousMe is a powerful new praise solution, or complements your rewards system with home reinforcement.
- Award MarvellousMe badges to celebrate good work, attendance, values and learning skills. The child's parent is instantly pinged with the wonderful news.





## SEND MESSAGES, REMINDERS AND DEADLINES

- Broadcast general school messages and reminders to everyone, years and groups, or send personal ones. From the classroom, headteacher's office and school reception.





## HOW OFTEN CAN YOU EXPECT TO RECEIVE NOTIFICATIONS?

---

Activities will be posted 2/3 times a week with a maximum of 4 activities a week

---

A child should expect to receive a badge at least 3 times a half term

---

Messaging will vary from half term to half term – we will try to keep direct messages to a minimum

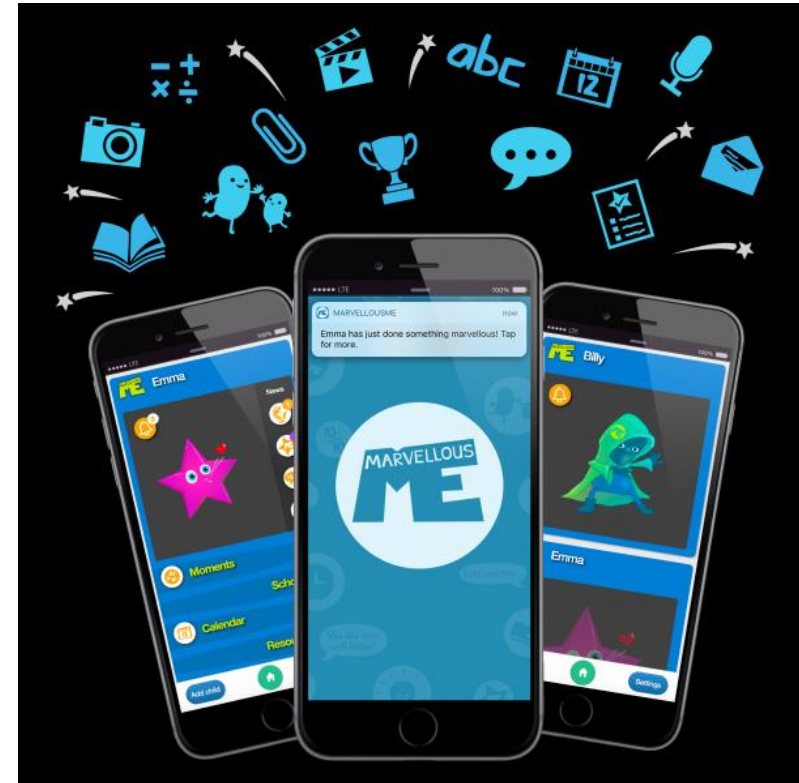
# MarvellousMe

Parent Quick Reference



# WHAT NEXT?

- Parent/Carer letters
- Download app
- Individual pupil codes





Parent Join Code for [REDACTED]

Sign up at [www.marvellousme.com](http://www.marvellousme.com) or download the app on Apple and Android devices.

Dear Parent/Carer

I am delighted to let you know that I will be using MarvellousMe to keep you informed of your child's activities and achievements at school.

MarvellousMe is a light-touch app that you can use on your smartphone, tablet or online and is ideal for parents who want a quick snapshot of their child's day. It offers real-time updates and is easy to share with people that you choose.

MarvellousMe will help you to:

- **Have a meaningful conversation with your child about their school day.**
- **Continue your child's learning and practise what they've done in class.**
- **Celebrate and reinforce their successes and positive behaviours.**

To sign up:



- Download the MarvellousMe app from your Apple and Android app stores, or go to [www.marvellousme.com](http://www.marvellousme.com)
- Enter your parent join code given above.
- Enter your name, email and a password.

To find out more or to get any help, please visit [www.marvellousme.com](http://www.marvellousme.com)

Thank you.

# PARENT LETTER

## SUCCESS SO FAR



- One week into parent and staff launch
- Initial engagement of 58%
- Staff feedback – incredibly positive: many staff already want to increase the minimum number of engagements with parents
- Student feedback – pupils visibly affected by knowledge of parent engagement
- Year 6 – Quality of work noticeably improvement when MM response from their parent was shared with the class

# 01

Discussion with EYFS staff to implement MM in Reception and Nursery in Summer 2 as a preferred method of engaging with parents

# 02

Initial analysis of behaviour patterns, parental engagement and pupil voice

# 03

Explore new badges to link with school development priorities

## NEXT STEPS

---