



9<sup>th</sup> January 2019

Dear Families & Friends

## Happy New Year

Welcome to 2019! I hope you have had a successful time with your families; energised your batteries and are ready for the challenges of the year ahead.

During this term your children will have the opportunity to take part in many exciting learning activities involving team work, problem solving, discussion, questioning, analysing and hypothesising.

As of this term all newsletters will be sent as paper copies to each family so that you are always kept informed of all school events. I have included with this newsletter the result of the Parent Questionnaire - thank you for taking your time to give us your view. I will use your views to support any future school developments and may ask you to take part in this.

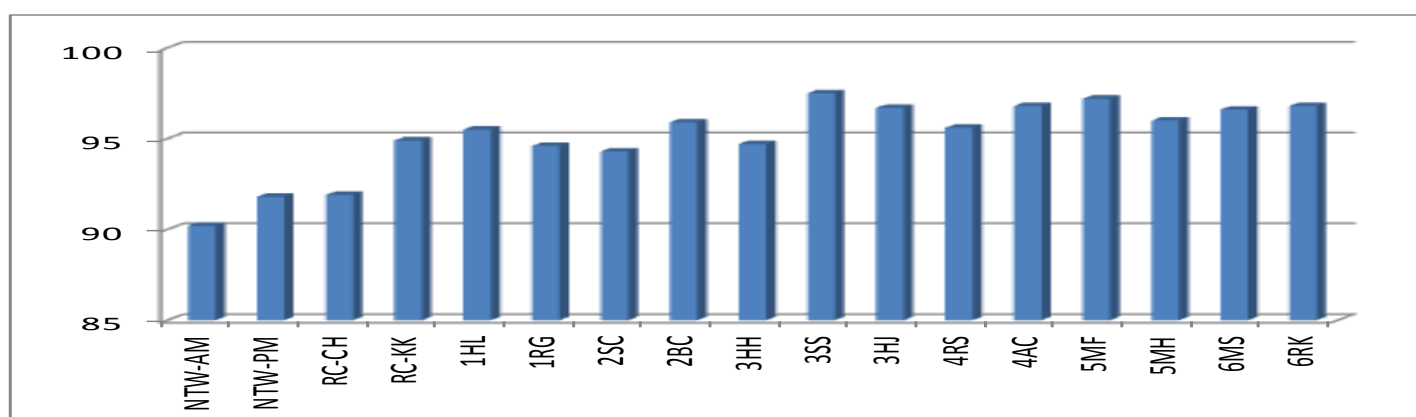
Please enjoy below the wonderful photographs of the Nursery & Reception Nativity play. The children were absolutely brilliant! What a fantastic way to end 2018 for our Linden family.



## Attendance Matters:

Our Attendance Target for this year is **96%**. Find below the attendance for the whole of last term. We very narrowly missed our target; this was partly due to illness and unauthorised extended leave across the school. Let's start 2019 by meeting our target each week. Please help us to maintain a high level of attendance by sending your child to school each day. Seven out of seventeen classes achieved our target – 3SS, 3HJ, 4AC, 5MF, 5MH, 6MS & 6RK. 116 children achieved 100% attendance. A FANTASTIC EFFORT!

NTW-AM	NTW-PM	RC-CH	RC-KK	1HL	1RG	2SC	2BC		<b>TOTAL</b>
<b>90.2</b>	<b>91.8</b>	<b>91.9</b>	<b>94.9</b>	<b>95.5</b>	<b>94.6</b>	<b>94.3</b>	<b>95.9</b>		
3HH	3SS	3HJ	4RS	4AC	5MF	5MH	6MS	6RK	<b>95.6</b>
<b>94.7</b>	<b>97.5</b>	<b>96.7</b>	<b>95.6</b>	<b>96.8</b>	<b>97.2</b>	<b>96</b>	<b>96.6</b>	<b>96.8</b>	



## DINNER MONEY

<b>1<sup>st</sup> Half Term</b>	<b>£50-75</b>
<b>2<sup>nd</sup> Half Term</b>	<b>£61-25</b>
<b>Total</b>	<b>£112-00</b>

## DATES

8 <sup>th</sup> January 2019	- School Term begins
29 <sup>th</sup> January	- Governing Body meetings
8 <sup>th</sup> February	- Yr5 Chinese New Year assembly
12 <sup>th</sup> February	- Governing Body meeting
18 <sup>th</sup> February	- Half Term break
28 <sup>th</sup> March	- School Photographs – Class groups
5 <sup>th</sup> April	- Yr4 Easter Assembly
10 <sup>th</sup> April	- Whole School Photograph
11 <sup>th</sup> April	- Yr1 Vaisakhi Assembly
12 <sup>th</sup> April	- Term End

Parent Questionnaire – December 2018

131 Questionnaires Received – 28%

	Question	Strongly Agree	Agree	Disagree	Strongly disagree	Don't Know
1.	My child enjoys their time at Linden	<b>41</b> <b>33%</b>	<b>78</b> <b>62%</b>	<b>2</b> <b>2%</b>	<b>0</b> <b>0%</b>	<b>1</b> <b>1%</b>
2.	My child is safe at Linden	<b>43</b> <b>34%</b>	<b>74</b> <b>60%</b>	<b>1</b> <b>1%</b>	<b>0</b> <b>0%</b>	<b>5</b> <b>4%</b>
3.	My child is looked after at Linden	<b>44</b> <b>35%</b>	<b>74</b> <b>60%</b>	<b>2</b> <b>2%</b>	<b>0</b> <b>0%</b>	<b>3</b> <b>2%</b>
4.	My child is taught well at Linden	<b>44</b> <b>35%</b>	<b>65</b> <b>52%</b>	<b>4</b> <b>4%</b>	<b>0</b> <b>0%</b>	<b>1</b> <b>1%</b>
5.	My child receives about the right amount of homework for their age at Linden	<b>37</b> <b>30%</b>	<b>68</b> <b>54%</b>	<b>9</b> <b>7%</b>	<b>1</b> <b>1%</b>	<b>7</b> <b>6%</b>
6.	Linden helps all children to behave well	<b>39</b> <b>31%</b>	<b>64</b> <b>52%</b>	<b>15</b> <b>12%</b>	<b>1</b> <b>1%</b>	<b>6</b> <b>5%</b>
7.	Linden deals with unacceptable behaviour when it occurs	<b>28</b> <b>22%</b>	<b>65</b> <b>52%</b>	<b>13</b> <b>10%</b>	<b>6</b> <b>5%</b>	<b>11</b> <b>9%</b>
8.	Linden is well led and managed	<b>34</b> <b>27%</b>	<b>63</b> <b>50%</b>	<b>6</b> <b>5%</b>	<b>3</b> <b>2%</b>	<b>12</b> <b>10%</b>
9.	Linden responds to any concerns I raise	<b>31</b> <b>25%</b>	<b>66</b> <b>53%</b>	<b>11</b> <b>9%</b>	<b>2</b> <b>2%</b>	<b>12</b> <b>10%</b>
10.	My child's school/teacher shares with me each term valuable information about my child's progress	<b>45</b> <b>36%</b>	<b>70</b> <b>56%</b>	<b>7</b> <b>6%</b>	<b>1</b> <b>1%</b>	<b>0</b> <b>0%</b>
11.	My child is making progress at Linden	<b>43</b> <b>34%</b>	<b>71</b> <b>57%</b>	<b>2</b> <b>2%</b>	<b>0</b> <b>0%</b>	<b>1</b> <b>1%</b>
12.	I would recommend Linden to another family	<b>40</b> <b>32%</b>	<b>56</b> <b>45%</b>	<b>10</b> <b>8%</b>	<b>1</b> <b>1%</b>	<b>13</b> <b>10%</b>
13.	I find the Linden website helpful	<b>25</b> <b>20%</b>	<b>62</b> <b>50%</b>	<b>10</b> <b>8%</b>	<b>1</b> <b>1%</b>	<b>17</b> <b>14%</b>
14.	I find the Linden text messaging service helpful	<b>63</b> <b>50%</b>	<b>57</b> <b>46%</b>	<b>2</b> <b>2%</b>	<b>1</b> <b>1%</b>	<b>0</b> <b>0%</b>
15.	I read the Linden newsletter regularly to keep myself informed of all events that take	<b>54</b> <b>43%</b>	<b>57</b> <b>46%</b>	<b>5</b> <b>4%</b>	<b>3</b> <b>2%</b>	<b>4</b> <b>3%</b>

place at school					
<b>TOTAL</b>	<b>611</b>	<b>990</b>	<b>99</b>	<b>20</b>	<b>93</b>
<b>%</b>	<b>34%</b>	<b>54%</b>	<b>5%</b>	<b>1%</b>	<b>5%</b>
<b>%</b>	<b>89%</b>		<b>6%</b>		<b>5%</b>