



# Wood End School

Learning Together, Respecting Each Other

News 11<sup>th</sup> January 2019

## Parent Consultation Evenings—Tues 12<sup>th</sup> Feb and Thurs 14<sup>th</sup> Feb

We are using the online appointment booking system: [“Parents Evening System”](#) (quick link at the top of the school website), which will open on **Monday 21st January**. An email giving full instructions and a link to the system will be sent to every parent/carer today. Only Nursery appointments are also available to book on Wednesday 13<sup>th</sup> Feb.

Please **DO NOT** book an appointment with Mrs Millar (SENDCo), unless you need to see her.

Please ‘book’ **one** 10 minute time slot, on one of the two days available for each of your children. If you would like to use a school computer and/or need help with signing up, please call the school office.

Deadline for sign up is **9am Friday 1st February**.

## Reception Stay and Play—Mon 28th Jan to Fri 1st Feb, 9-10am

We are using the online appointment booking system: [“Parents Evening System”](#), which will open on **Friday 18th January for Reception Stay and Play**. An email giving full instructions and a link to the system will be sent to every parent today.

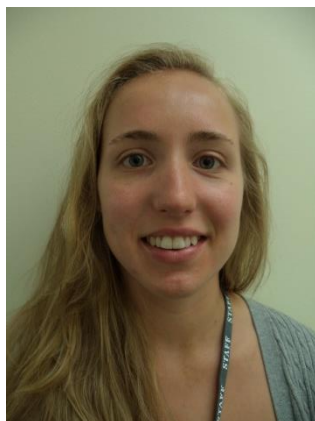
Please ‘book’ **one** place per child, on one of the five days available. If you would like to use a school computer and/or need help with signing up, please call the school office. Deadline for sign up is **12 noon Thurs 24th Jan**.

**Nursery Stay and Play** will take place Mon 4<sup>th</sup> Mar to Fri 8th March 2019. Details to follow next week.

## Admission Timetable Nursery and Reception September 2019

Admission Timetable for Nursery Schools	
Apply online from	Monday 4th February 2019
Application deadline	12pm Monday 4th March
Offer date	Monday 18th March
Accept your place by	Monday 25th March

To find out all about our fabulous Nursery and the admissions process, please visit [our website](#) for lots of information including 30 hour funded places. The deadline for application for Reception places September 2019, is Tues 15th January 2019.



## Meet the Team

**Name:** Miss Lundgren, Maple Class Teacher

### What does your role involve?

My role involves teaching Maple class, in Year 4, where I enjoy inspiring my class and creating new lessons to teach. I am responsible for ensuring all the children have equal opportunities in and outside the classroom, that they make progress and become independent learners.

The subject I lead is P.E (with the help of Mr Barker), ensuring that the curriculum is being taught and integrated across the school.

### How did you get into this role?

I have always known I wanted to be a teacher, even when I was in primary school myself. After leaving school, I completed a BA Hons in Education and then went on to complete my PGCE in Primary Teaching.

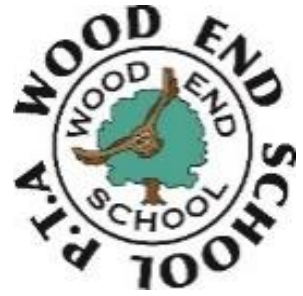
### What do you enjoy about it?

I love that every day is different and I am still always learning and improving my practice. Getting to know my children and learning about them is one of the highlights of being a teacher. When I have helped them achieve, I feel I have achieved as well.

### What might surprise people about your role?

I do not have a favourite subject that I teach, I love teaching everything!

## PTA News



Our next PTA Meeting is on Tuesday 15th January, 7.45pm start in the staff room. Everyone is welcome. You do not need to be a Trustee, event organizer or have any particular role! Just come along to find out more about plans for how funds will be spent and future fundraising ideas.



Get your teams ready! The ever popular PTA Quiz night will return on Saturday 2nd February. Doors (and bar!) will open at 7pm for a 7.30pm start. Lookout for paper order forms in book bags (and a PDF form is also attached to this email).

Tickets are £13 per person (which includes a fish and chip supper from Godfrey's). Teams are max 8 per table (we can help if you don't have a full table). Wine pre-orders will be available at discounted prices! It is always a fun night out and last year we raised over £2,800 for the school. Any questions, please contact Helen at [woodendptaquiz@gmail.com](mailto:woodendptaquiz@gmail.com)

PTA Key News and Dates: <http://www.woodend.herts.sch.uk/home-1/about/news>

Email: [PTA@woodend.herts.sch.uk](mailto:PTA@woodend.herts.sch.uk)



## Health & Safety Notices

**Dogs—May we please remind you that dogs are not allowed on the school premises. In light of requests from parents, may we also ask that you do not leave your dog unattended tied to the school fence. Thank you.**

Also that should your child suffer from sickness or vomiting that they do not return to school for 48 hours after the last episode. Thank you

## Links to Recent Events/Information on the School Website:

[Year 6 SATS Presentation](#)

[Year 2 History Off the Page – Toys – Wed 9<sup>th</sup> Jan](#)

[Curriculum Letters Spring Term 2019 – Nursery to Year 6](#)

If you wish to receive news reminders and view past events from the website on your phone please download the School Jotter App. For iPhone users go to the App Store and for Android users go to Google Play. Follow the instructions on screen to find Wood End School. There is no need to add your payment details as all payments are made via the School Gateway (Schoolcomms).

## Leaflets Attached:

Hertfordshire Parent Spring ESafety Leaflet

The Harpenden Neighbourhood Plan Referendum leaflet – Polling at Wood End on Thurs 7<sup>th</sup> Feb 19

Art Camp at Roundwood Park School, February half term