

Dear School Swimming Contact,

Here are your 2014/15 Block 1 Swimming results and the subsequent analysis of them so you can share the information with your colleagues. The service average contains the results from the schools that swam in Block 1 (there are schools who will swim in Block 2 only) and this will therefore change throughout the year. This year we have included more information so you can see the progress the children are making.

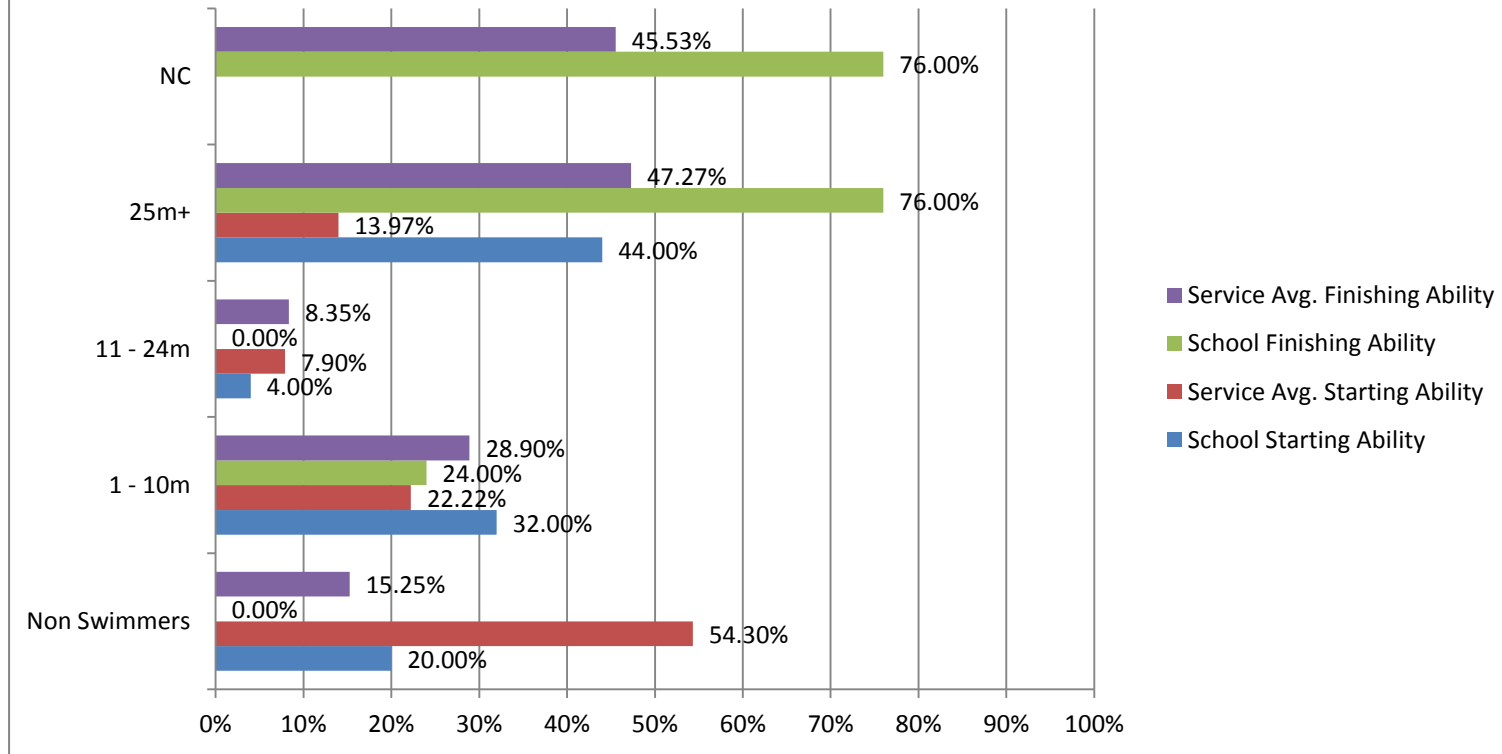
### Swimming Service average compared to 2013/2014 (Block 1 only)

	Starting ability		Finishing ability	
	2013/2014	2014/2015	2013/2014	2014/2015
<b>Non Swimmer</b>	48.92%	54.30%		14.98%
<b>1 – 10m</b>	23.17%	22.22%		28.39%
<b>11 – 24m</b>	10.46%	7.90%		8.44%
<b>25m+</b>	17.40%	13.97%	52.17%	47.97%
<b>NC</b>			50.44%	46.20%

### Your school results

18 Weeks	Y4			
	School Starting Ability	Service Avg. Starting Ability	School Finishing Ability	Service Avg. Finishing Ability
<b>No. of Children</b>	25	28.1	25	28.0
<b>Non Swimmers</b>	20.00%	54.30%	0.00%	15.25%
<b>1 - 10m</b>	32.00%	22.22%	24.00%	28.90%
<b>11 - 24m</b>	4.00%	7.90%	0.00%	8.35%
<b>25m+</b>	44.00%	13.97%	76.00%	47.27%
<b>NC</b>			76.00%	45.53%

## St Thomas More Catholic Primary - Y4 - 18 Weeks



Many thanks, the School Swimming team.