



THE TIPTREE HEATH TELEGRAPH

18th January 2019
Spring Term Issue 2



If you have any Safeguarding concerns please speak to Tracey Oram, Designated Safeguarding lead. Information will be treated in the strictest confidence.

DATES FOR THIS TERM

25th January - Damson Class Assembly
25th January - Apricot Class Home Safety Talk by Fire Brigade
1st February - Blueberry Class Assembly
7th February - PTFA EGM 3.15pm - All welcome to attend
8th February - Raspberry Class Assembly
11th February - Termly Learning Conferences 3.30pm to 7.30pm
13th February - Termly Learning Conferences 3.30pm to 7.30pm
15th February - Cherry Class Assembly
18th to 22nd February - Half-term Holiday
1st March - Apricot Class Assembly
8th March - Little Scarlet Class Assembly
22nd to 27th March - Book Fair in School
8th to 22nd April - Easter Holidays
23rd April - All children return to school for the Summer Term

11+ FOR SEPTEMBER 2020 ENTRY

We have been asked by the Consortium of Selective Schools in Essex to inform parents of the 11+ examination procedure for September 2020 entry. Registration for the 11+ exam will take place from 14th May to 1st July 2019 inclusive. The CSSE schools will hold open days during June and July 2019.

The 11+ tests will take place on Saturday, 21st September 2019.

A parental guide for 11+ preparation is available on the CSSE website along with one set of downloadable free familiarisation papers. The most recent past papers from September 2018 are available to order. These can all be found at

www.csse.org.uk

If you require further information, please call into the school office.

Happy Birthday to:

Emily - 18th January
Mason - 21st January
Aaliyah-Milan - 22nd January
Carmen - 23rd January



This Week's Super Star Award

Lexington - Little Scarlet Class
Evalynn - Raspberry Class
Evie - Damson Class
Cameron - Apricot Class
Sam - Cherry Class
George - Blueberry Class
Ellis - Mulberry Class

This Week's Headteacher Super Star Award

Elizabeth - Little Scarlet Class
Thomas - Raspberry Class
Lily-Rose - Damson Class
Aston - Apricot Class
Callum - Cherry Class
Keira - Blueberry Class
Thomas - Mulberry Class



THE TIPTREE HEATH TELEGRAPH

18th January 2019
Spring Term Issue 2



POET SURVEY

Share your experiences of SEN and ECHP support and help improve services in Essex.

Do you receive SEN support for a special educational need or disability?

Do you have an Education Health Care Plan (ECHP)?

Are you a parent, carer or practitioner with children or young people who have an ECHP or SEN support?

If the answer is yes, we'd love to hear your thoughts through the POET SURVEY.

Take part in the survey by visiting:

www.essexlocaloffer.org.uk/POET

LUCKY PLATE WINNERS

On Thursday this week we had a special Nemo themed lunch at the Tiptree Nibble Station. Congratulations to all the children who found a lucky plate and received a prize of a colouring book and colouring pencils.

Well done to Jasper, Ella Rose, Lily, Michael James, Lauren, Adam and Clare who were the lucky winners.

BLUEBERRY CLASS SURVEY ON SCREEN TIME

As part of their 'Media Madness' theme this term Blueberry class need your views on screen time - especially if you are under 18!

Follow this link to answer the questions they have devised

<https://www.surveymonkey.co.uk/r/QR5Y3WY>

Have a super weekend, Tracey Oram

PTFA EXTRAORDINARY GENERAL MEETING

Thursday 7th February 3.15 pm

- Do you have the time to become a member of our new PTFA Committee?
- Do you have the skills to be the Chair/Deputy Chair or a committee member?
- Why not come along to the EGM

WRITING FANTASTICS

This week the teachers have introduced the writing FANTASTICS in class to support children's writing of sentences.

These are:

F-Feeling

A-Asking

N-Noticing

T-Touching

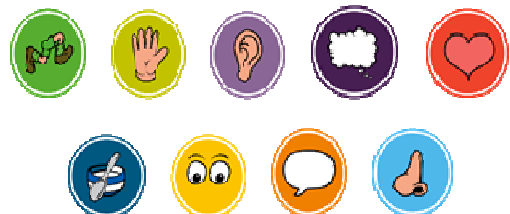
A-Action

S-Smelling

T-Tasting

I-Imagining

C-Checking



Please talk to your children about them I am sure they will be able to tell you about how they are using them to improve their sentence writing.