



Key Dates Term Dates 2019

Term 3

Thursday 3rd January
until

Friday 15th February

Term 4

Tuesday 26th February
until

Friday 5th April

Term 5

Tuesday 23rd April
until

Friday 24th May

Term 6

Tuesday 4th June
until

Tuesday 23rd July

Tuesday 29th January 17.30 -
Year 5 Parent briefing about
Medway Test (New date)

Class assemblies:

Wednesday 30th January –
3/4P (new date)

Wednesday 6th February -
3/4B

Wednesday 13th February
3/4F

Wednesday 27th February
3/4M (new date)

Parent Consultations

Tuesday 12th February and

Thursday 14th February

Headline

Introductions

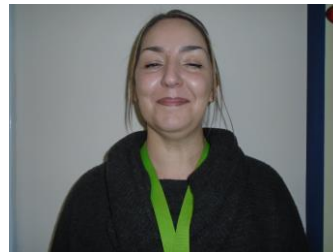
We would like to introduce 4 new members of staff who have joined us this term:



Rachel Farmer has joined the school administration team. She comes from a background of working in a range of schools and is a whizz on all matters relating to school office administration! Mrs Farmer can be found in the office between 8am and 4pm everyday.



Claire Hofer has joined us as our new Year 5 teacher. She is an experienced teacher who has worked in schools across Medway and is mad about STEM (science, technology, maths and engineering)! She is keen to work with the Upper Key Stage 2 team and especially proud to take over the year 5 class.



Claire Langridge has joined our Pastoral Team and will be working closely alongside Mrs Liddle to work with parents and their families. We are delighted to announce that Mrs Langridge's post has been funded by Provident Bank and she works for a charity called School Home Support. School Home Support (SHS) is an independent education charity that works in partnership with schools to support children and their families to get the most from the educational opportunities on offer.

SHS can offer practical and emotional support to children and their families within the school community. Our SHS Practitioner is there if you are feeling worried, concerned or just need some advice. As SHS is an independent service you can self-refer, or speak to a staff member, who can refer to SHS on your behalf. The service is client led so you can work with them for as long, or as little, as you need. We are hoping that Mrs Langridge will develop lots of opportunities for family learning, adult classes and support groups.



Mark Russell has joined us as a Nursery Officer to work full time in Foundation Satge One. Mark has worked with the school for some time now, completing his training with us. We are delighted to welcome him to the Early Years team!

Uniform

A navy blue jumper, sweatshirt or cardigan for Years 1 - 6. Royal blue for FS1 and FS2 (Nursery and reception). Navy, black or grey trousers, tailored shorts, skirt or dress/navy and white checked dress. A white or blue polo shirt, shirt or blouse. Flat plain black shoes or trainers (no heels or open toes). Uniform can be ordered from

www.tesco.com/ues

Key Staff

Mrs Mason *Headteacher*

Mrs Price *Deputy Head FS & KS1*

Mr Presneill *Deputy Head KS2*

Mrs White *Chair of Governors*

Mrs Prentice *SENCO*

Mrs Lewis *FS Leader*

Mrs Price *Y1 Leader*

Mrs Byrne *Y2 Leader*

Mrs Marie *LKS2 Leader*

Mr MacDonald *UKS2 Leader*

Mrs Liddle *Family Liason Officer*

07535 696125

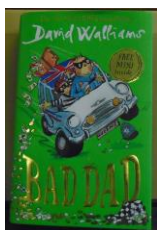
This school is committed to safeguarding and promoting the welfare of children, achieving equal opportunities and combating discrimination.

We operate a very clear whistleblowing policy for staff.

News

Prize draw

We have a signed copy of Bad Dad by David Walliams. If you would like to have the chance to win this lovely publication, please send £1 in a named envelope clearly marked "David Walliams" by Friday 1st February. The draw will take place on Monday 4th February and the winner will be notified by text message



Flu vaccine

If your child missed having their flu vaccine in school, there are 2 extra clinics:

Tuesday 22nd January 2019 (3.00pm - 5.00pm) at Twydall Primary school
Monday 28 January 2019 (3.30 - 5:30pm) at Medway Maritime Hospital, Magpies Centre

Primary Engineer Leaders Award

We are taking part in the above award. If you are an engineer or have links to the engineering industry, we would be delighted to have your help and support. Please complete the slip sent home and return it to the office or Miss Staples. Thank you for your support.

Teacher recruitment

School Direct is a school-based teacher training route led by schools working in partnership with universities. Together we provide training which blends the theoretical study of learning, teaching and child development. There are a large number of School Direct places available in primary and secondary schools for salaried and non-salaried positions (QTS and PGCE).

The Medway Teaching School Alliance is a highly successful and forward-thinking group of 80+ schools who are

committed to developing excellent teachers. MTSA are able to offer a stimulating and challenging training experience. Our trainees work alongside and learn from outstanding teachers and gain experience in a range of settings and contexts. If you are interested, applications must be made via www.ucas.com to Medway Teaching School Alliance.

October Tag Day

We raised an amazing £390 for the Indonesia appeal. Thank you for your support

Reminders

PGL

If your child is going to PGL in March, please ensure it is fully paid by 15th February. Thank you.

Pat On The Back

3/4B - Kiya K for her independent home learning research about Spain and Anna for increasing her home reading and motivation for learning in class
3/4F - Maizie for her improvement in her attitude and behaviour to learning and school this week. Aiysha for her brilliant work in finding countries in Europe with an atlas

3/4M - Isaac for his fraction work in numeracy and Lillie for writing a story at home and sharing with the class

3/4P - Emelia and Oliver for being role models and settling in well

5H - The whole class for adapting so brilliantly to new expectations and routines – they have all made me very proud and I am looking forward to continuing to work together throughout the rest of this year

5/6S - Kelisha for her perseverance with fractions in numeracy and Flourish for her initiative in topic work reading maps

6T - Alfie for his determination to learn and improve his weekly spellings and for trying really hard to use his spelling learning to improve his writing. Tyler for the continued effort he is putting into his maths learning, which is really beginning to show in the work he is producing

Coming home.....

- Primary Engineer Leaders Awards

