



# Blewbury Endowed C of E Primary School

## Diary updates and Office Notices

### Wk /Com 26th November

Dear Parents and Guardians

We have had another busy week in school and as you can imagine there are lots of preparations going on for Christmas. The Angel costumes are down from the attic and nativity songs fill the air.

**Christmas Cards** – Thank you to those of you that ordered. If you forgot, ran out of time etc you can still do this, please see the message below.

The online shop will be open till **midnight 09/12/2018** for any late orders or reorders\*.

Parents simply need to visit <https://www.apfsorders.co.uk> and enter the unique order code from the back of their child's original artwork to place their order. A small postage and packing charge will apply and all orders will be dispatched directly back to the parent's home address.

**Christmas Fair** – Please read all the information further down the newsletter and bring in your contributions. Let's make this a really good Christmas Fair. Hopefully the date is in your diary.

**Kingswood** – I have put the powerpoint presentation which was shared at the assembly, on to the web site, unfortunately the videos don't work but it gives you a further idea of our activities. For my group there is a selection of photos on Class 4 page.

**Shakespeare – The Tempest** - Again thank you to everyone for their fantastic efforts with this production which was performed at the Cornerstone on Monday 19th. The production was part of a national Shakaespeare Festival, on our night Chilton performed Romeo and Juliet, then we performed the Tempest and finally after the interval one of the classes from Manor performed Mid summer Night's Dream. In total there were three performing nights at the Cornerstone. This was a lng day for the children with a technical rehearsal in the afternoon, however an amazing experience for all concerned. Thank you Mrs Galbraith, with assistance from Mrs Bayliss and Miss Costello.

**Leaf clearing** – Class 5 are helping out the village on Thursday this week by collecting leaves around the play close, so if you see us setting off in wellies tomorrow you'll know what we are up to!

**Book Fair** – Well done to everybody who purchased and or helped. We took about £450 and this will translate into over £200 worth of books we can order from the Scholastic site. This is a great way of us refreshing stock and adding to our class libraries.

This Thursday, tomorrow will be chip day as the school is closed for INSET Day on Friday.

**Cross Country** – Reminder that there is a race this Saturday at Sonning Common , Chiltern Edge School. As usual Year 1 start at 10.00 and each year group goes at 15 minute intervals. Unfortunately I can't come and watch this time but good luck if you run.

**Biathlon National Finals** - Well done to Maddie Kingston who competed in the Under 10 category at the National Biathlon Finals last Saturday in Leeds. This involved a 50 m swim and an 800 metre run she came 14th overall and had two PBs. Well done Maddie look forward to your next result in March at the school's finals, Maddie was competing for Blewbury School.

**Don't forget the Christmas Fair !**

Diary Notices  
WC 26th November 2018

TERM 2		School Lunches Week 2	
<b>Monday 26th November</b>	Karate 15:20 – 16:20 Tag rugby 15:15 – 16:15 Drama 15:15 – 16:15		
<b>Tuesday 27th November</b>	Construction club 15:15 – 16:00 Dance 15:15 – 16:15 Football Y4-6 15:15 – 16:15 Gymnastics Class 2 & 3 15:30 – 16:3		
<b>Wednesday 28th November</b>	Early Morning ICT Club 8:00 – 8:45 Gymnastics class 4-6 15:30 – 16:30 Hockey Ignite 15:15 – 16:15		
<b>Thursday 29th November</b>	Mindfulness 15:15 – 16:00 Choir 15:15 – 16:15 Football Ignite 15:15 – 16:15		
<b>Friday 30th November</b>	<b>INSET DAY</b>		

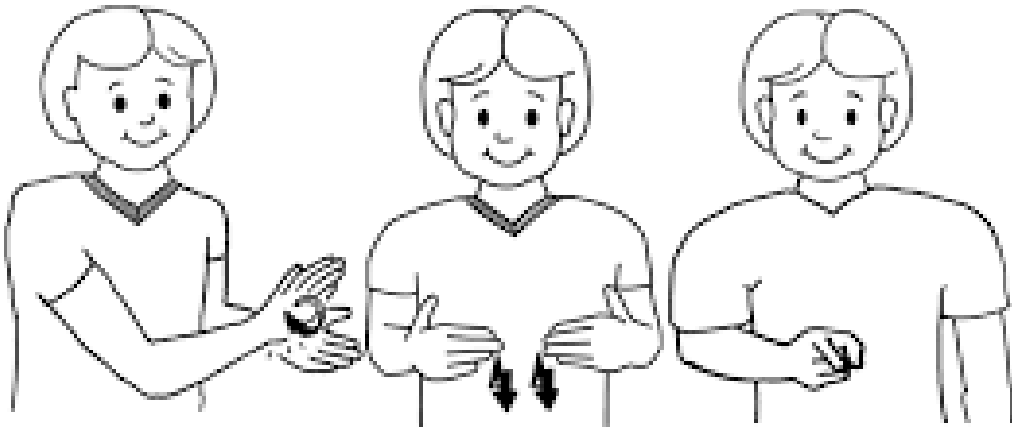
**Key Dates for your Diary**

4th December	Year 1-6 Pantomime in Newbury 13.00 - 17.15
7th December	Foundation to Cornerstone 09.30 - 12.00
7th December	Christmas Fair 14.00 - 16.00
11th December	Nativity Dress Rehearsal 10.00
11th December	Senior Citizen Christmas Lunch
12th December	Nativity 14.00
13th December	Nativity 18.30
19th December	Christmas Lunch 12.00 RockSteady concert 14:45 Village Carol Service 20.00
20th December	Carol Service 3.30 pm
21st December	End of Term 1.30 finish
7th January 19	Start of Term

*All dates can be found on the school website: <http://www.blewbury.oxon.sch.uk/> here you can see the next fortnight's information on the left hand side. You can also look at the calendar for dates further ahead by clicking on Key Information/School Calendar*

# Super Signer

## Happy Birthday Amos



Happy Birthday to you  
Happy Birthday to you  
Happy Birthday Amos



We are looking for players to join our u12's.  
Love netball? Come along!

🕒 6-7.15pm, Wednesdays

📍 OLA, Radley Rd, Abingdon OX14 3PS

ALL players welcome!

Get in touch to arrange a taster session  
[trinitynetball@hotmail.com](mailto:trinitynetball@hotmail.com)



[www.trinitynetball.com](http://www.trinitynetball.com)

**DIDCOT RUGBY**

We are recruiting new players!  
All ages & all levels of experience.  
Adults & children's rugby, contact & non-contact versions.  
Fully floodlit pitch, new clubhouse & changing rooms!  
RFU Level 3 & 2 coaches

[www.didcotrfc.com](http://www.didcotrfc.com)  
[JOIN@DIDCOTRFC.COM](mailto:JOIN@DIDCOTRFC.COM)  
07554 632994

TOUCH RFU Quality Standard

# Christmas note from the PTA

Dear all

Your children should have bought home this week information with regards to the Christmas fair on Friday 7th December. There is a leaflet about donations as well as information on Santa's grotto and a useful dates reminder list. This event cannot happen without your support so please donate anything you can as well as coming along to the event on the day, There will be lots of great stalls for some Christmas shopping and fun and games for the kids.

This year we are doing the Grotto slightly differently. If you would like your child to meet father Christmas in our magical grotto we are kindly asking for parents to bring in a small gift (of a value no more than £5) with a donation of £1. Please bring this gift to the school office the week of the Fair CLEARLY LABELLED with your child's name and class.

As always, if you are able to help in any way on the day please let me know

Thankyou

Sally Lewis ([sallyannlewis@googlemail.com](mailto:sallyannlewis@googlemail.com))



**Don't forget to bring in your Christmas Raffle tickets in time for the draw on Friday 7th December at our Christmas Fair**



## Christmas Check list for School

There is lots to remember this time of year, so we thought we would give you a hand!



Donations for school Fair  
Friday 30<sup>th</sup> Nov - Friday 7<sup>th</sup> Dec



Hand in Santa's grotto form with small  
labelled gift (max spend £5) and £1 donation  
by Thursday 6<sup>th</sup> December



School Christmas Fair in village Hall  
Friday 7<sup>th</sup> December 2-4pm



Order DVD for Nativity play (KS1 only)  
by Friday 14<sup>th</sup> December



School Carol service at Blewbury Church  
Thursday 20th December 3.30pm



KS1 Nativity  
DVD is on  
ParentMail  
ready to  
pre order



# Donations needed for School Christmas Fair – Dec 7<sup>th</sup> 2018



Please bring in your donations for the school Fair from...

MONDAY 3<sup>rd</sup> DECEMBER -FRIDAY 7<sup>TH</sup> DECEMBER

Please donate as much as possible to help fill the stalls for the Christmas Fair. WE NEED

- **Soft Toys**
- **Children's tombola (good quality please)**
- **Toys, games and books**
- **Filled Jam Jars**
- **Wine/Adult tombola (Chocolates, toiletries, gifts etc)**
- **Cupcakes and Biscuits**

If anyone can **help on the day** we would really appreciate it. *Please* contact the office or a member of the PTA if you are able to help. It is a big day and we need help with the stalls, coffees and mince pies

Please avoid sending in videos or books in poor condition. Good quality tombola gifts for adults and children very much appreciated - Thanks



## Santa's grotto

There will be a Santa's Grotto at the Christmas fair on Friday 7<sup>th</sup> December.

**If you would like your child to have a gift, please bring in a small wrapped present with a donation of £1.**

Please CLEARLY label the present with the child's name and class and hand in with this form to the office

Please bring in and leave presents from

Monday 3<sup>rd</sup> - Thursday 6<sup>th</sup> December



VILLAGE HALL

2-4 PM

7th DEC

BLEWBURY  
SCHOOL PTA



STELLA AND DOT. CHILLI STALL  
STATIONERY. CHRISTMAS CARDS. SANTA'S GROTTO  
HANDMADE JEWELLERY. LOCAL CRAFTS  
VEGAN SKINCARE. GIFTS. TOMBOLA  
RAFFLE. CHILDREN'S STALLS + GAMES