

Portable power station

Designed for eternal power

vibe

by **STRIMA**[®]



See
how it's
works



What is a Portable Power Station?

- A portable power station is a compact, rechargeable device that provides electricity for various electronic devices and appliances when traditional power sources are unavailable.
- You don't have to rely solely on an electrical socket - the VIBE power station allows you to draw energy straight from the sun!

Where Can You Use a Portable Power Station?



Camping & Outdoor Adventures

Charge phones, cameras, GPS devices, power camping lights and portable fridges.



Emergency Preparedness

Stay powered during outages.



Travel & Road Trips

Keep devices charged in remote areas, power entertainment devices for long journeys.



Outdoor Worksites

Operate tools in remote areas, perfect for construction, landscaping, and field research.



Events & Festivals

Keep your devices charged during outdoor events, power sound systems, lights, and vendor equipment.



Home Use

Ideal for working from home or your garden.



Why Choose a Portable Power Station?

- ✓ Convenient & Portable
- ✓ Versatile & Reliable
- ✓ Eco-Friendly when used with solar panels

Energy for free

Whenever, Wherever

STRIMA[®]

Swadzim, Poznanska Street 54
62-080 Tarnowo Podgorne, Poland

+48 61 8 950 950
sales@strima.com

www.strima.com



PORTABLE POWER STATIONS



VIBE ALPHA 300
Battery capacity: 296 Wh
Output: 230 V, 50 Hz
300 W (continuous),
600 W (peak)

Battery Type: Li-NiCoMn
Cycle Life: > 800 times

Recommended panel:
VIBE EPP 120

214 USD + VAT



VIBE GAMMA 1000 LFP
Battery capacity: 1075.2 Wh
Output: 230 V, 50 Hz
1 000 W (continuous),
2 000 W (peak)

Battery Type: LiFePO4
Cycle Life: > 3500 times

Recommended panel:
VIBE BPP 150 (maks. x2)

731 USD + VAT



VIBE ALPHA 1000 LFP
Battery capacity: 768 Wh
Output: 230 V, 50 Hz
1 000 W (continuous),
2 000 W (peak)

Battery Type: LiFePO4
Cycle Life: > 3000 times

Recommended panel:
VIBE EPP 200

474 USD + VAT



VIBE ALPHA 1500 LFP
Battery capacity: 1 536 Wh
Output: 230 V, 50 Hz
1 500 W (continuous),
3 000 W (peak)

Battery Type: LiFePO4
Cycle Life: > 3000 times

Recommended panel:
VIBE EPP 400

994 USD + VAT

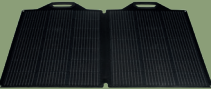
Vibe Alpha 300 Usage Example



RUNNING TIME OF DEVICES USING ALPHA 1000 LFP WITH CAPACITY OF 768WH					
Around 20 hours depending on the workflow	Around 8 hours depending on the workflow	Around 45 charges	Around 11 charges	Around 2 hours	Around 8 hours
Domestic sewing machine with AC Servo motor	Industrial sewing machine with AC Servo motor	iPhone (15Wh)	Macbook Pro	Electric drill (345W)	Mini fridge (70W)

- Drone
- Projector
- Round knife
- Sewing machine
- Coffee machine
- Laptop
- Portable fridge

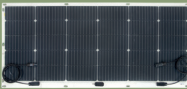
MONOCRYSTALLINE PHOTOVOLTAIC PANELS



VIBE BPP 150
Foldable panel
Maximum power: 150 W
Voltage: 24 V



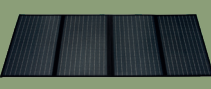
196 USD + VAT



VIBE BPF 100
Flexible panel
Maximum power: 100 W
Voltage: 18 V



109 USD + VAT



VIBE EPP 120
Foldable panel
Maximum power: 120 W
Voltage: 18 V



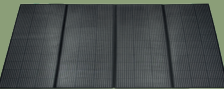
176 USD + VAT



VIBE EPP 200
Foldable panel
Maximum power: 200 W
Voltage: 18 V



314 USD + VAT



VIBE EPP 400
Foldable panel
Maximum power: 400 W
Voltage: 40 V



588 USD + VAT