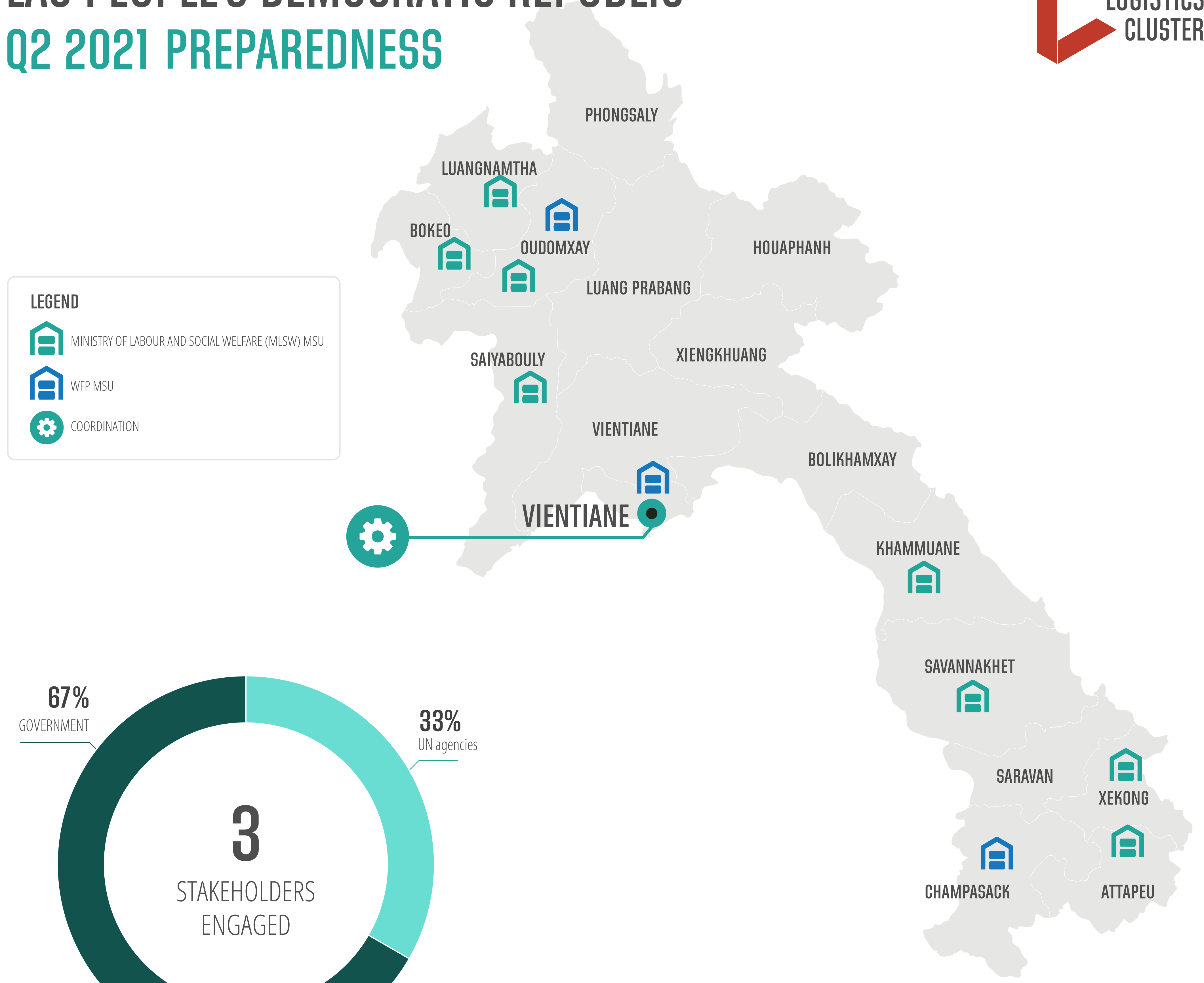


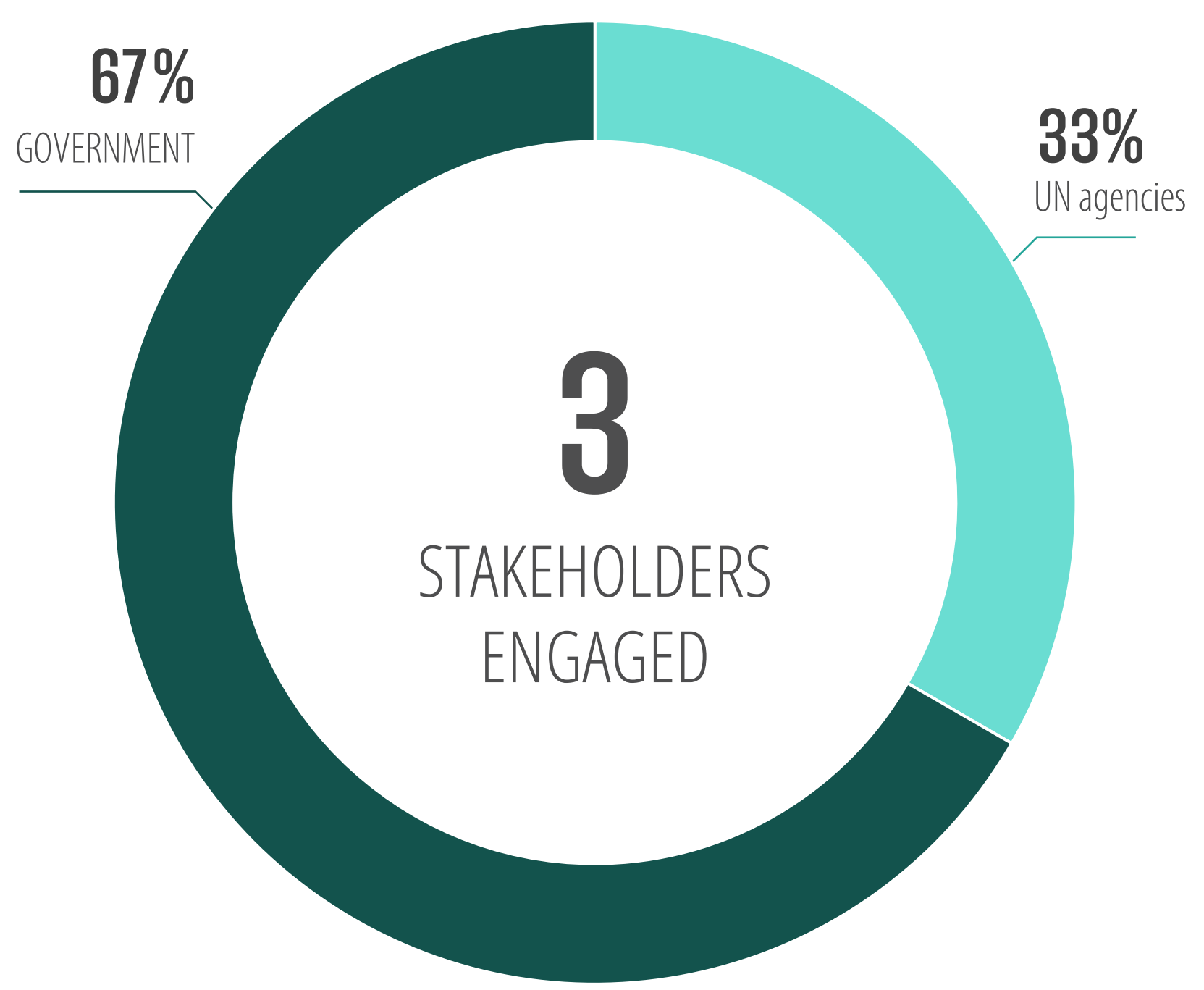
# LAO PEOPLE'S DEMOCRATIC REPUBLIC

## Q2 2021 PREPAREDNESS



**LEGEND**

- MINISTRY OF LABOUR AND SOCIAL WELFARE (MLS) MSU
- WFP MSU
- COORDINATION



## PROJECT HIGHLIGHTS



PREPAREDNESS OFFICER CONTINUED WORKING WITH THE MINISTRY OF LABOUR AND SOCIAL WELFARE TO UPDATE LOGISTICS IMPLEMENTATION PLAN BASED ON THE NATIONAL LOGISTICS PREPAREDNESS ACTION PLAN AND THE WFP DISASTER RISK REDUCTION PROGRAMME



THE PROJECT SUPPORTED MOLSW IN DESIGNING AND PLANNING FOR DISTRICT-LEVEL WAREHOUSE MANAGEMENT TRAININGS



[LOGCLUSTER.ORG/PREPAREDNESS/LAOPDRI9](https://logcluster.org/preparedness/laopdri9)



*Information represented in this document is based on the most accurate data currently available from the Field Logistics Cluster staff supporting the emergency response operation. It may be revised or updated as new, or more complete data becomes available.*