

## Background

The conflict in Sudan continues to cause an influx of returnees crossing through several border points into South Sudan adding to more pressure to the protracted humanitarian response in South Sudan. Consequently, the WFP-led Logistics Cluster continues to support the humanitarian community in South Sudan by playing the coordination role, provides information management services to improve the decision-making of humanitarian organisations in South Sudan. Where logistic gaps are identified, the Logistics Cluster acts as a *Provider of Last Resort* by facilitating access to these common logistics services to support the humanitarian community in their operations.

## Operational Highlights

- The Logistics Cluster facilitated and transported **1,044 mt** of life-saving multi-sectoral humanitarian cargo from January to March 2024. Out of the total, **90%** was transported by road and river and **10%** by air. The cluster reached **61** hard-to-reach locations and supported **69** organizations.
- The Logistics Cluster **supported the Sudan emergency response in Renk** being a primary entry point for the returnees by facilitating river movement of **287 mt** of multisectoral humanitarian relief cargo on behalf of **15 humanitarian organizations**.
- Additionally, the cluster transported **461 mt** of relief cargo by river to Malakal, Melut including Bor and **191 mt** to **31** locations in Bentiu and Wau by road utilizing IOM's Common Transport Service (CTS) trucks.
- **Fourteen road convoys** consisting of **230** trucks/ light vehicles estimating **8,167 mt** were coordinated to Greater Pibor Administrative Area (GPAA), Northern Jonglei, Western Equatoria and locations along the Western Corridor.



Dry season Prepositioning, Bor South Sudan

Photo credit: Gabriel Kuany, Logistics Cluster

## Coordination and Information Management

- **Five coordination meetings** were conducted in Bentiu, Bor and Juba with a general focus on road convoy coordination in line with the dry season prepositioning, and the cluster's services in support of the Sudan crisis.

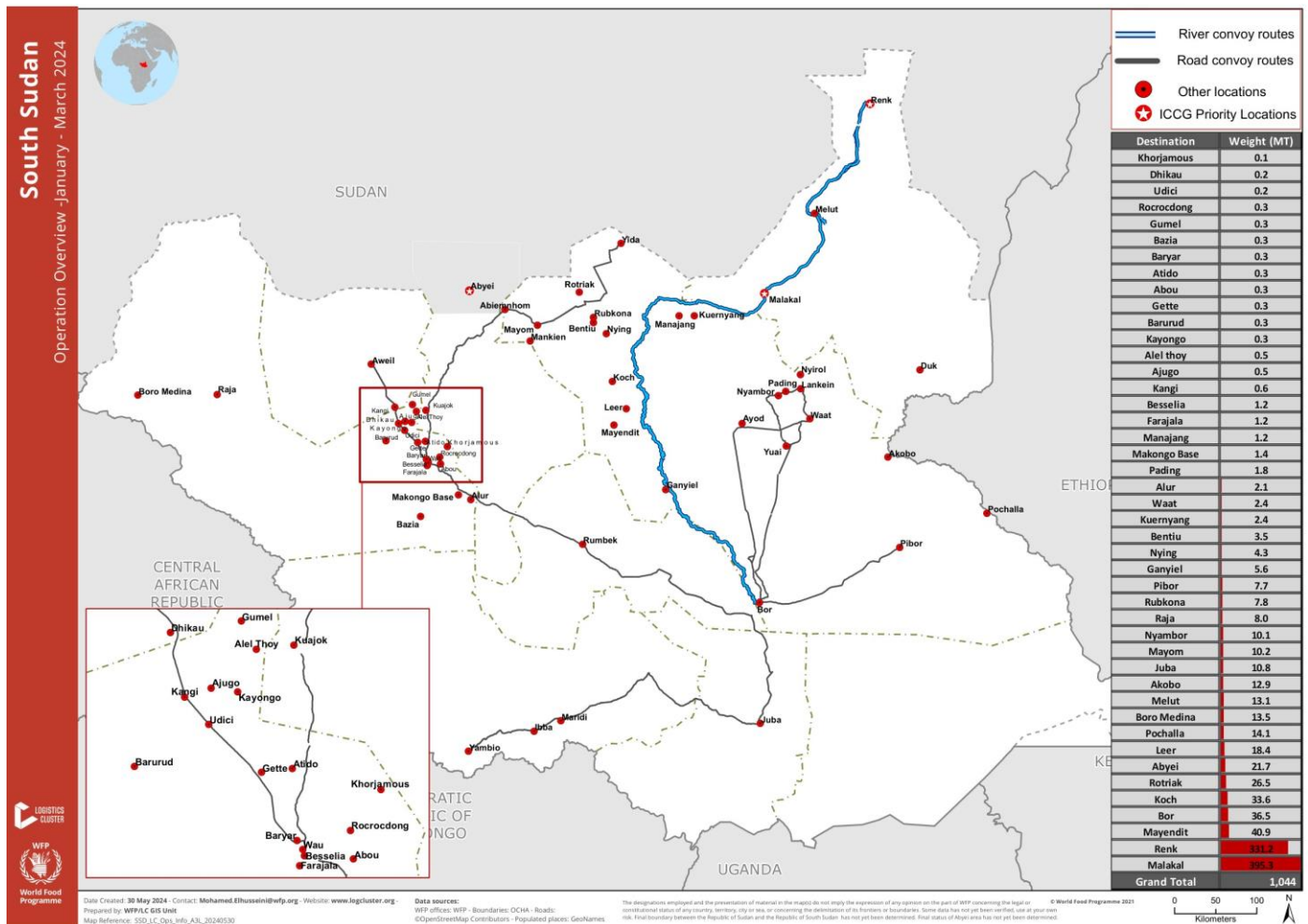
**Thirty-five information management products** were published by Logistics Cluster on its [webpage](#).

## Logistics Capacity Building

- The cluster conducted **1 training** (Online Logistics Cluster Induction equipping **53 humanitarian logisticians** from **12 partner organizations**. The training was aimed at improving understanding of the cluster approach and mandate, enabling partners' efficient and effective contribution to inter-agency logistics response.

# Operation Overview, January - March 2024

South Sudan



## Contacts

Fiona Lithgow

Logistics Cluster Coordinator

[southsudan.clustercargo@wfp.org](mailto:southsudan.clustercargo@wfp.org)

Blessing Dzambo

Deputy Logistics Cluster Coordinator - Operations

[fiona.lithgow@wfp.org](mailto:fiona.lithgow@wfp.org)

Simbi Charles

Logistics Associate

[blessing.dzambo@wfp.org](mailto:blessing.dzambo@wfp.org)

Lillian Laiki

Information Management Assistant

[simbi.charles@wfp.org](mailto:simbi.charles@wfp.org)

Mohamed Elhousseini

GIS Officer

[lilian.laiki@wfp.org](mailto:lilian.laiki@wfp.org)

[mohamed.elhousseini@wfp.org](mailto:mohamed.elhousseini@wfp.org)