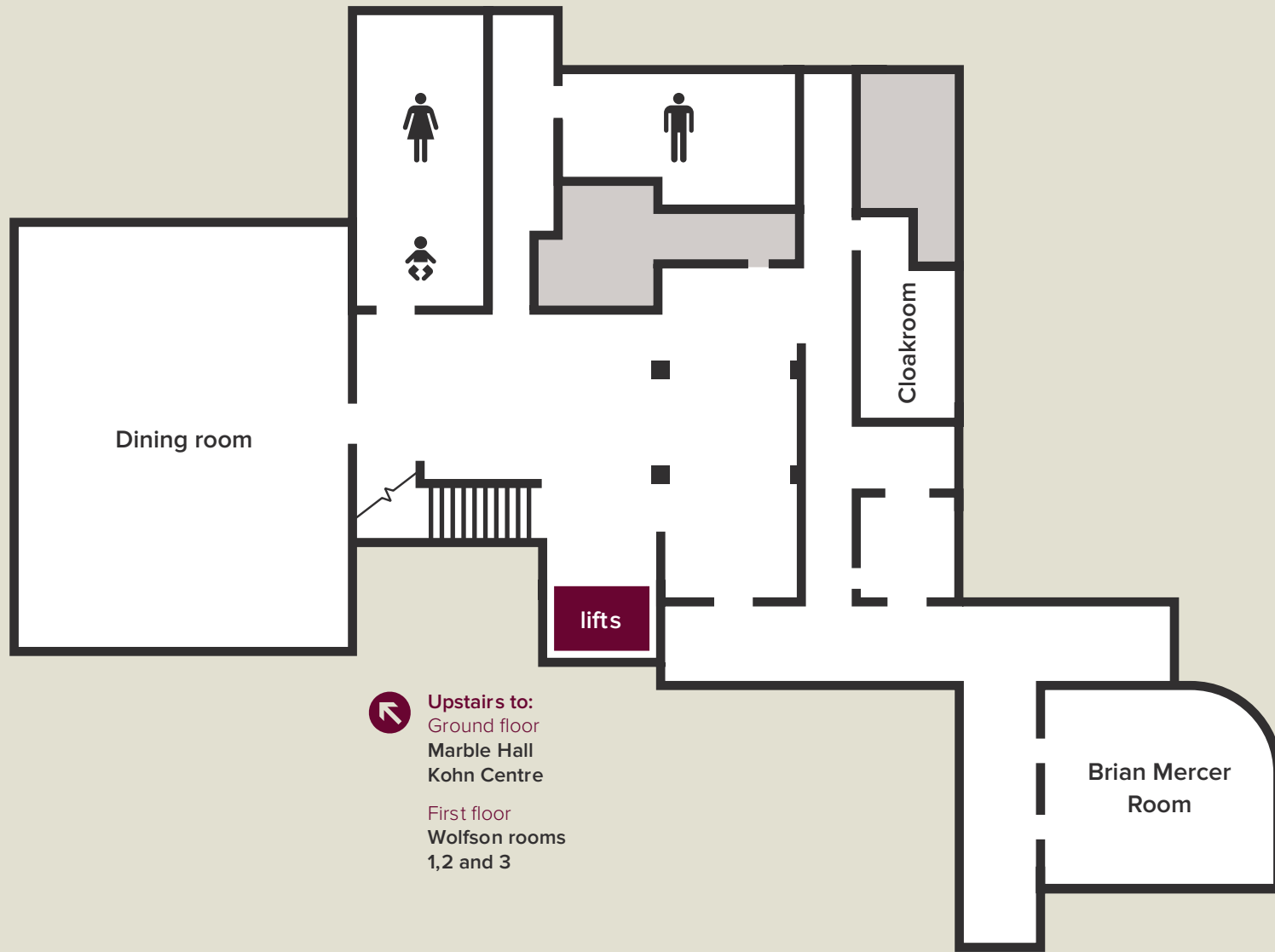
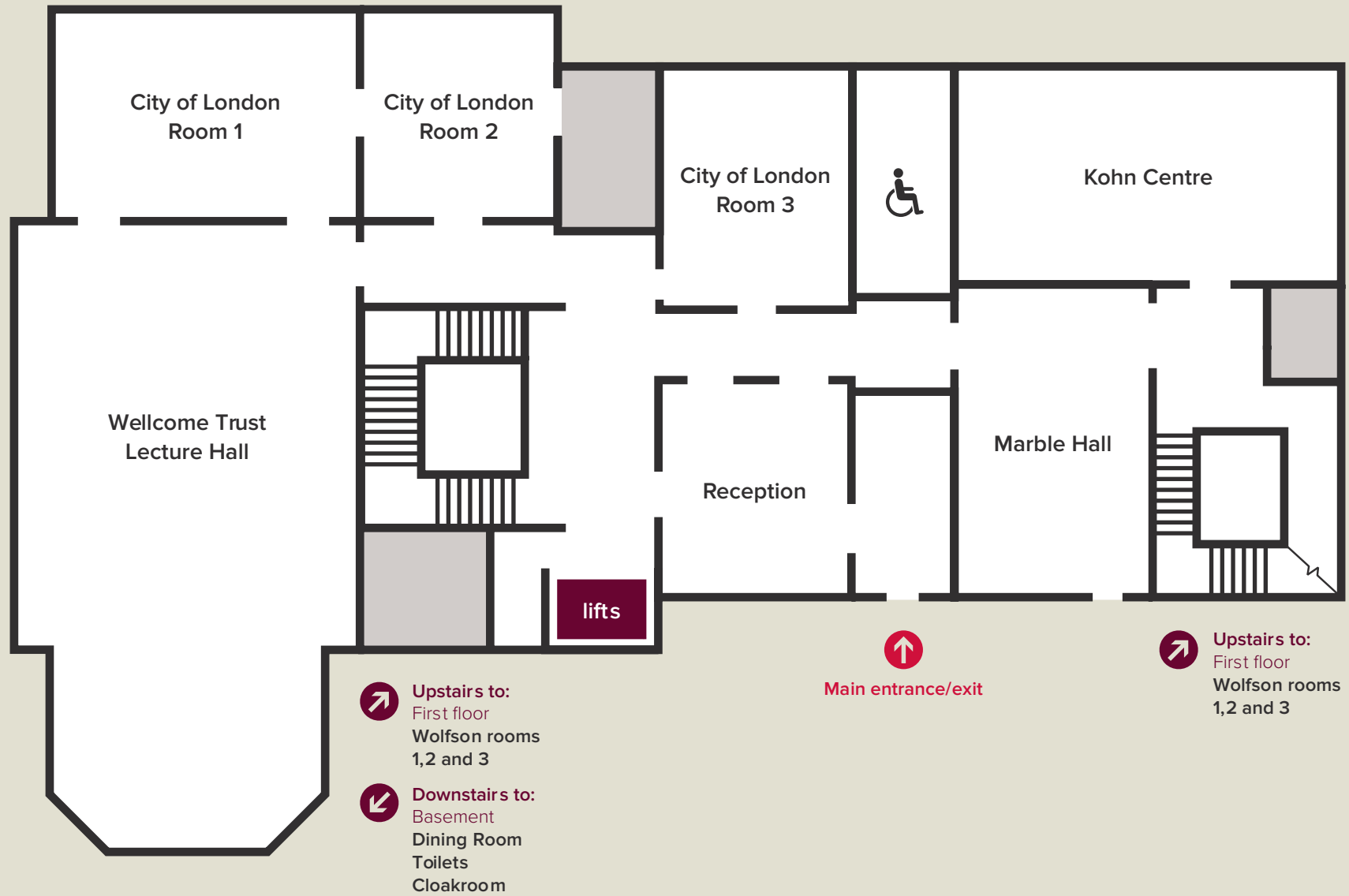


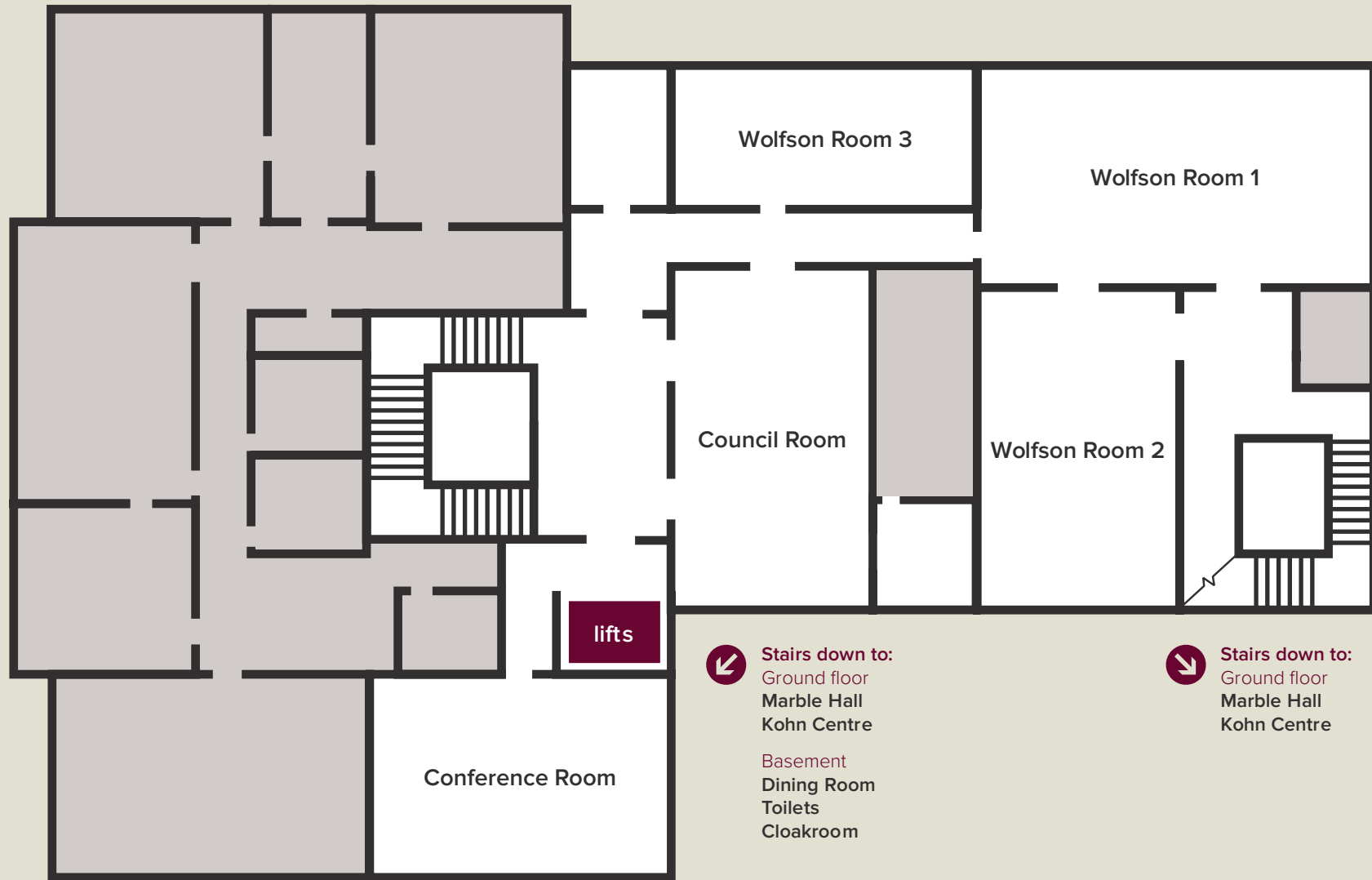
# Basement



# Ground floor



# First floor

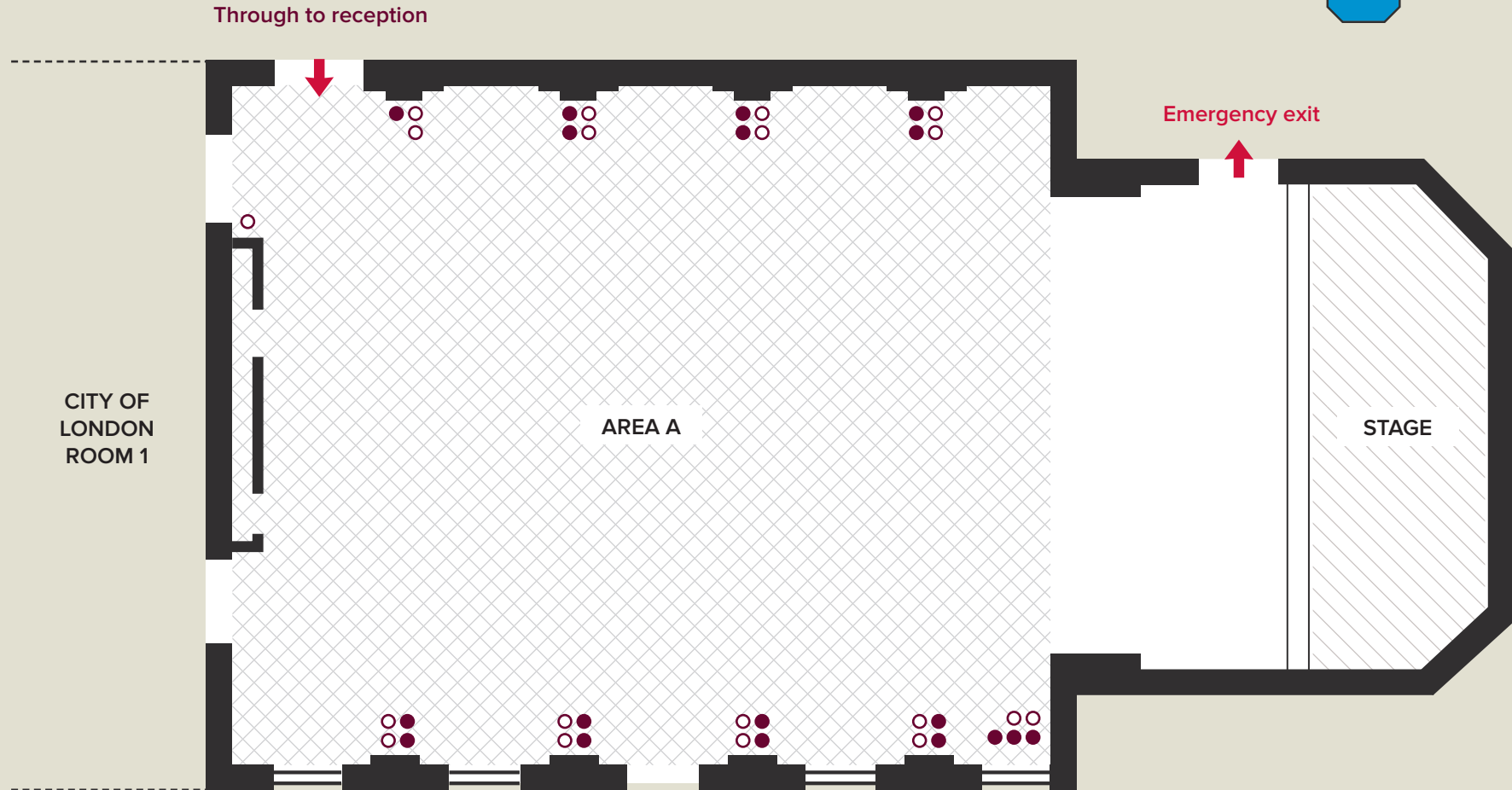


↙ Stairs down to:  
Ground floor  
Marble Hall  
Kohn Centre  
Basement  
Dining Room  
Toilets  
Cloakroom

↘ Stairs down to:  
Ground floor  
Marble Hall  
Kohn Centre

# Wellcome Trust Lecture Hall

## Ground floor



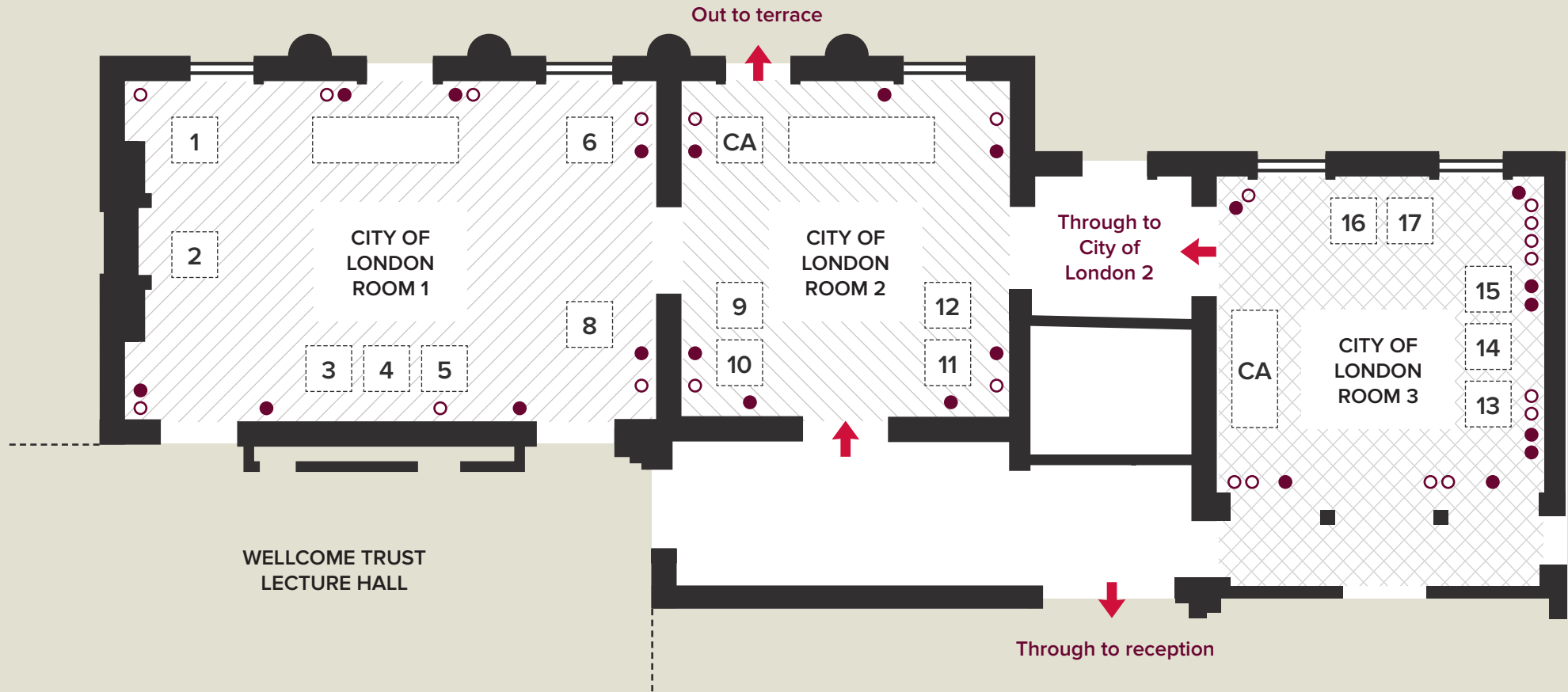
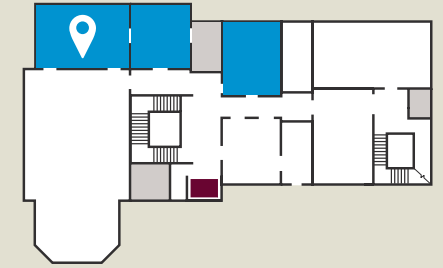
SIZE SPECIFICATIONS	LENGTH (M)	WIDTH (M)	AREA (M <sup>2</sup> )
Area A	10.9	7	–
Stage	6.8	7	–
Total	22.7	11.9	270

KEY
○ Plug socket
● Internet portal

CONTACT INFO
T: +44 20 7451 2612
E: <a href="mailto:venuehire@royalsociety.org">venuehire@royalsociety.org</a>
<a href="https://royalsociety.org/venue-hire">royalsociety.org/venue-hire</a>

# City of London Rooms

## Ground floor



SIZE SPECIFICATIONS	LENGTH (M)	WIDTH (M)	AREA (M <sup>2</sup> )
City of London Room 1	10.4	7.2	74.9
City of London Room 2	7	7.2	50.4
City of London Room 3	9	7.1	63.9

- KEY**
- Plug socket
  - Internet portal

**CONTACT INFO**

T: +44 20 7451 2612  
 E: [venuehire@royalsociety.org](mailto:venuehire@royalsociety.org)  
[royalsociety.org/venue-hire](https://royalsociety.org/venue-hire)

# Marble Hall and Kohn Centre

## Ground floor



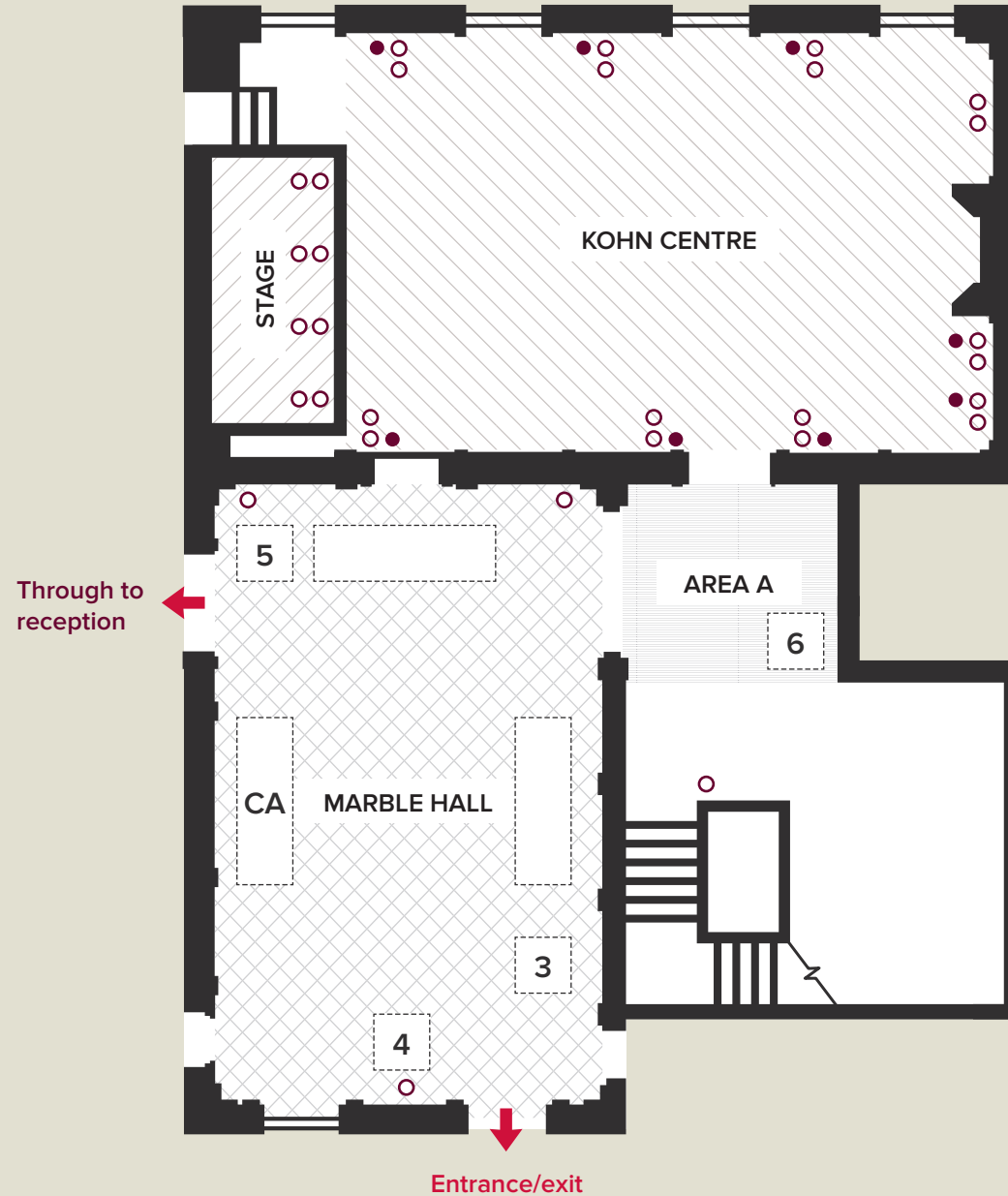
SIZE SPECIFICATIONS	LENGTH (M)	WIDTH (M)	AREA (M <sup>2</sup> )
Kohn Centre	9.1	7.6	68.25
Kohn Centre stage	5.7	1.8	–
Marble Hall total	11.6	7.2	77
Area A	4.1	3.7	–

### KEY

- Plug socket
- Internet portal

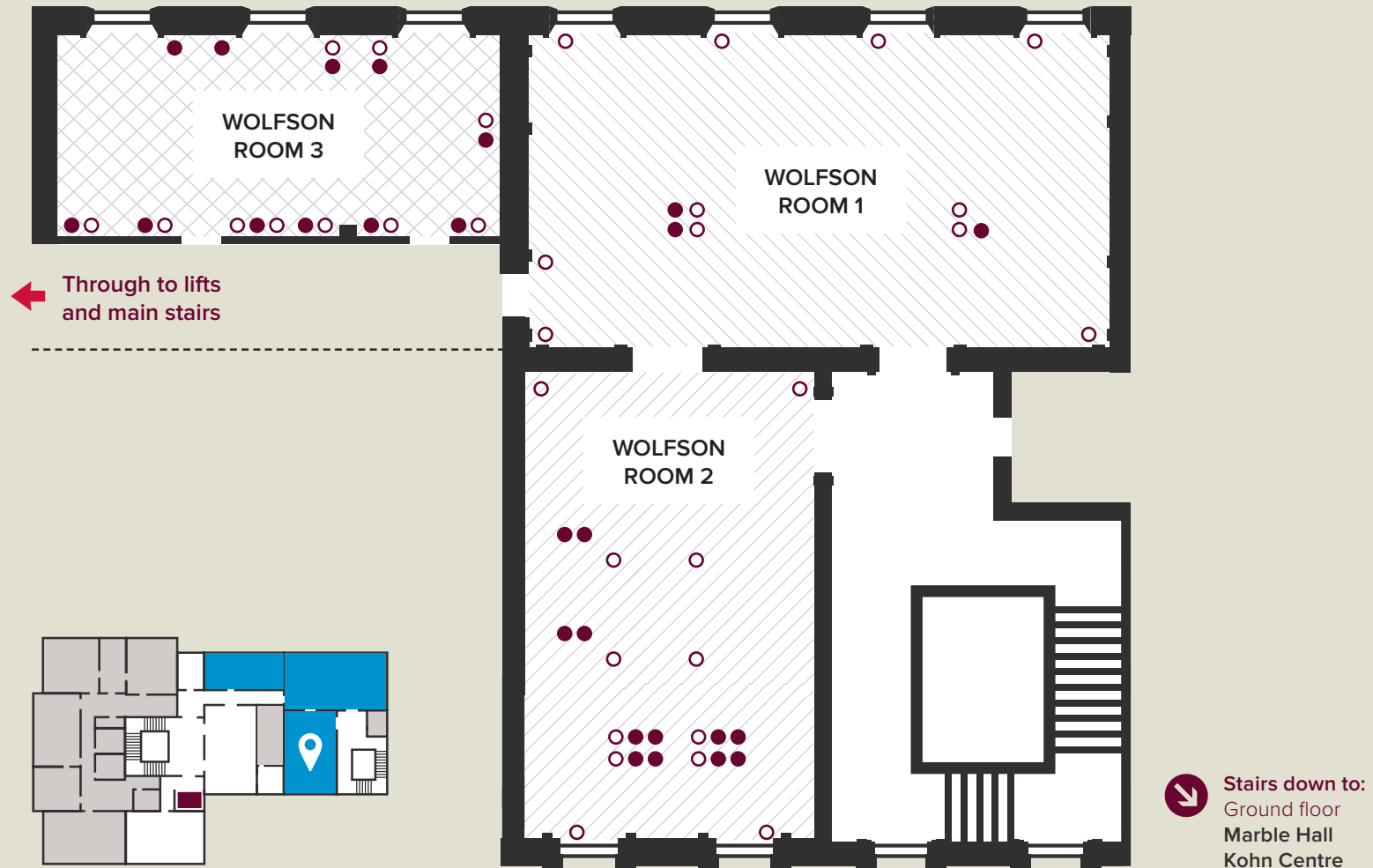
### CONTACT INFO

T: +44 20 7451 2612  
 E: [venuehire@royalsociety.org](mailto:venuehire@royalsociety.org)  
[royalsociety.org/venue-hire](http://royalsociety.org/venue-hire)



# Wolfson Library Suite

## First floor



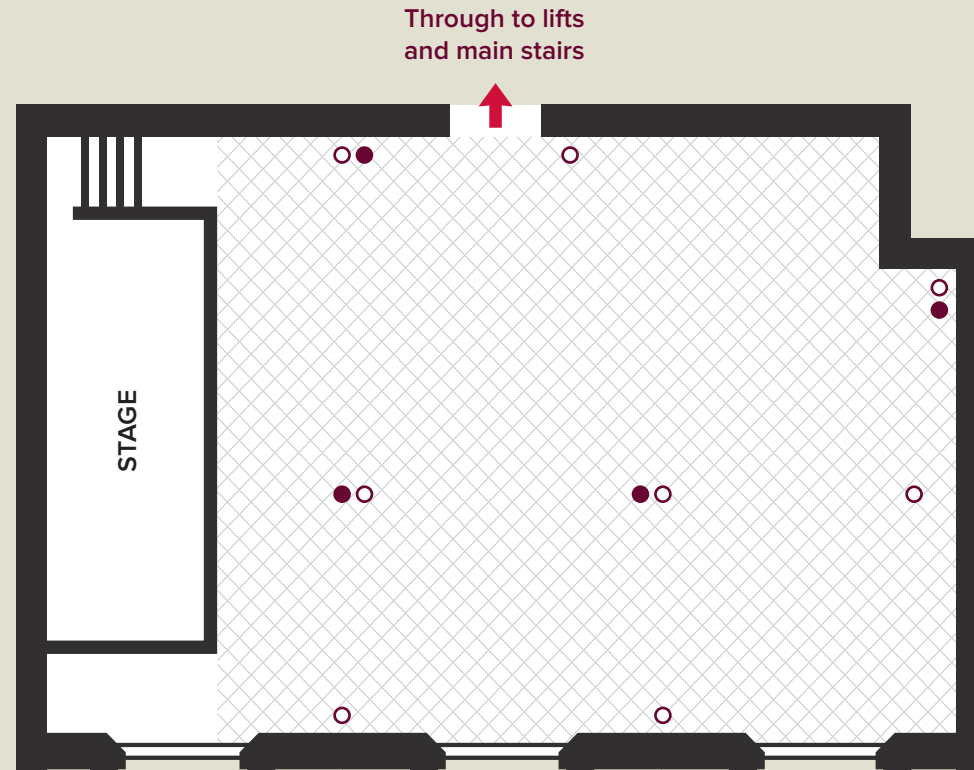
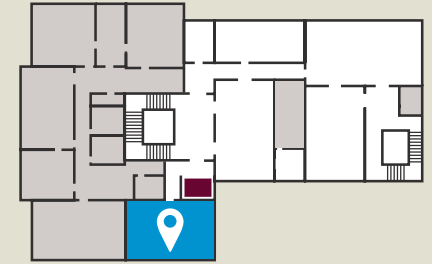
SIZE SPECIFICATIONS	LENGTH (M)	WIDTH (M)	AREA (M <sup>2</sup> )
Wolfson Room 1	13.6	7.2	–
Wolfson Room 2	11	7	77
Wolfson Room 3	10.96	5.43	–

KEY
○ Plug socket
● Internet portal

CONTACT INFO
T: +44 20 7451 2612
E: <a href="mailto:venuehire@royalsociety.org">venuehire@royalsociety.org</a>
<a href="https://royalsociety.org/venue-hire">royalsociety.org/venue-hire</a>



# Conference Room

## First floor



SIZE SPECIFICATIONS	LENGTH (M)	WIDTH (M)	AREA (M <sup>2</sup> )
Conference Room	10.7	6.8	72.7
Stage	4.4	1.8	–

### KEY

-  Plug socket
-  Internet portal

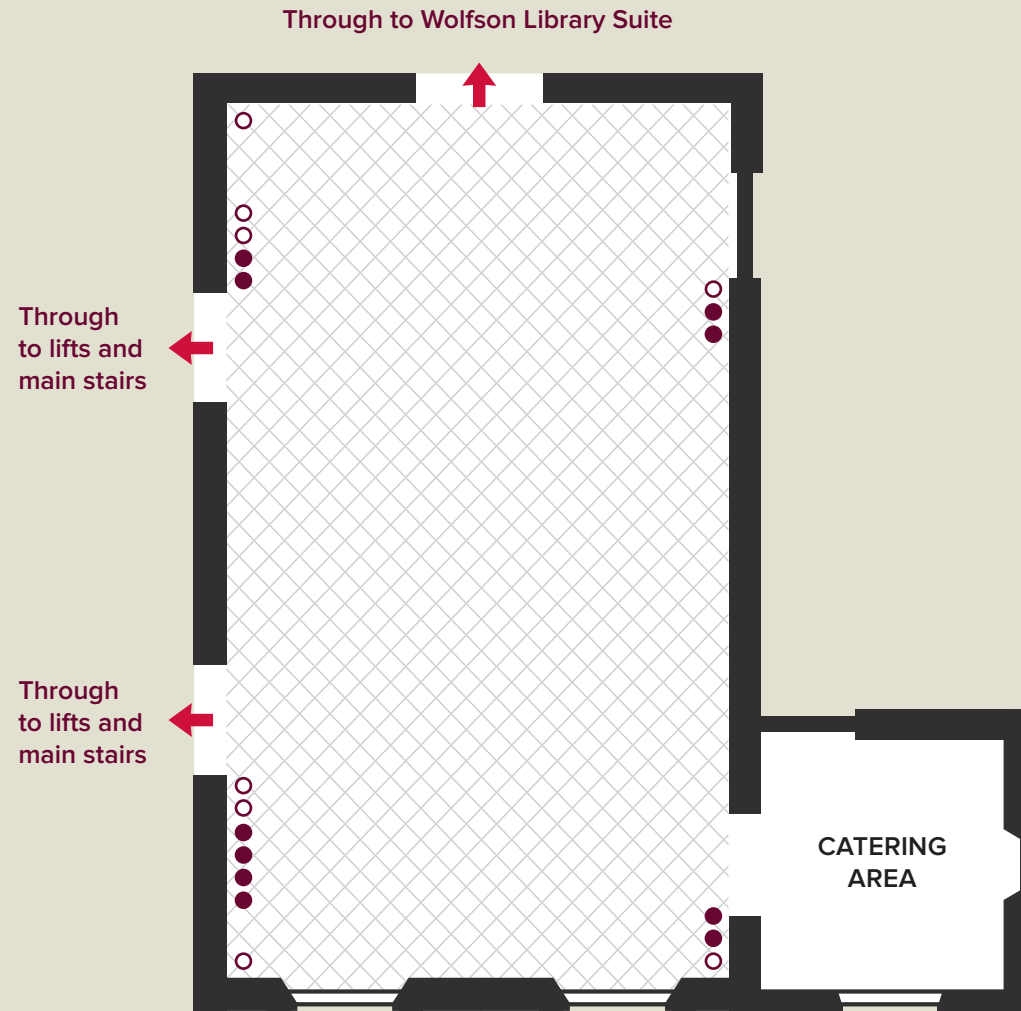
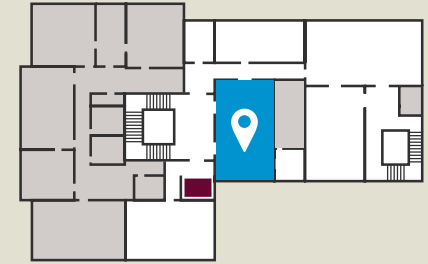
### CONTACT INFO

**T:** +44 20 7451 2612  
**E:** [venuehire@royalsociety.org](mailto:venuehire@royalsociety.org)  
[royalsociety.org/venue-hire](https://royalsociety.org/venue-hire)



# Council Room

## First floor



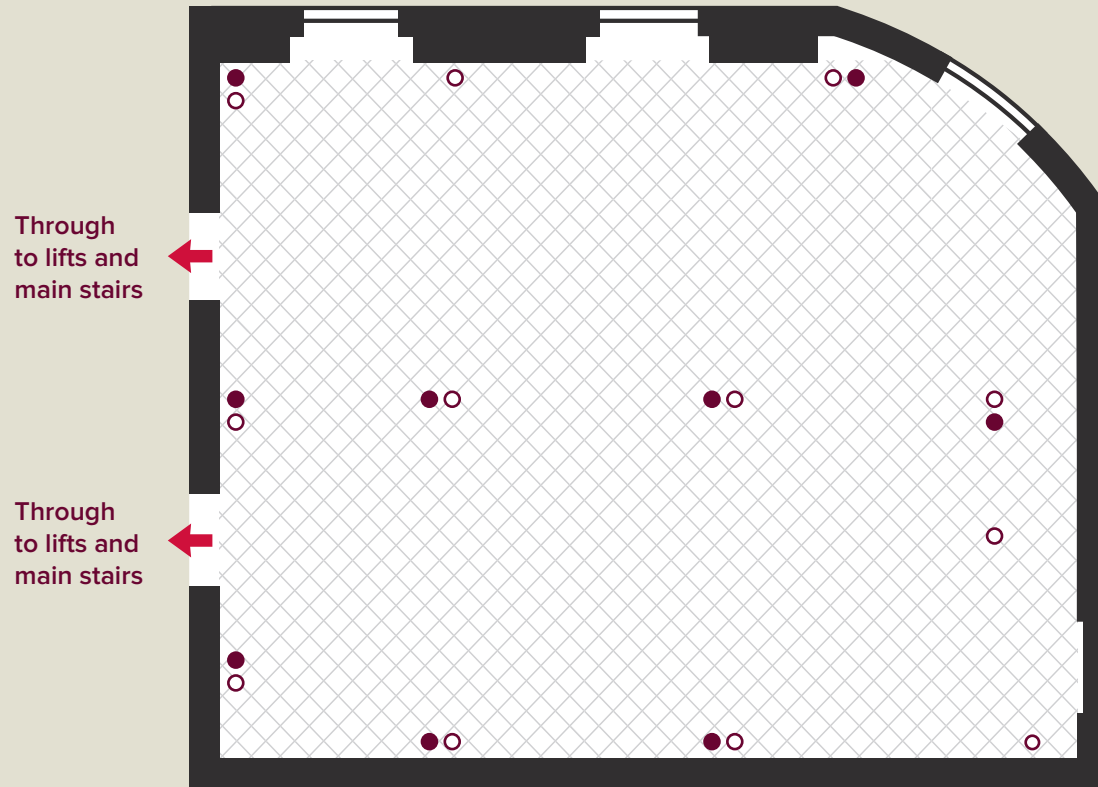
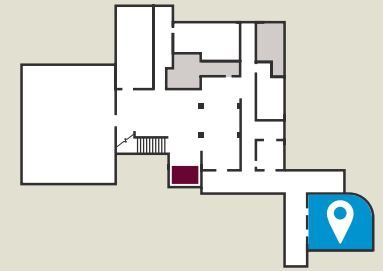
SIZE SPECIFICATIONS	LENGTH (M)	WIDTH (M)	AREA (M <sup>2</sup> )
Council Room	12.2	6.8	82.9

KEY
○ Plug socket
● Internet portal

CONTACT INFO
T: +44 20 7451 2612
E: <a href="mailto:venuehire@royalsociety.org">venuehire@royalsociety.org</a>
<a href="https://royalsociety.org/venue-hire">royalsociety.org/venue-hire</a>

# Brian Mercer Room

## Basement



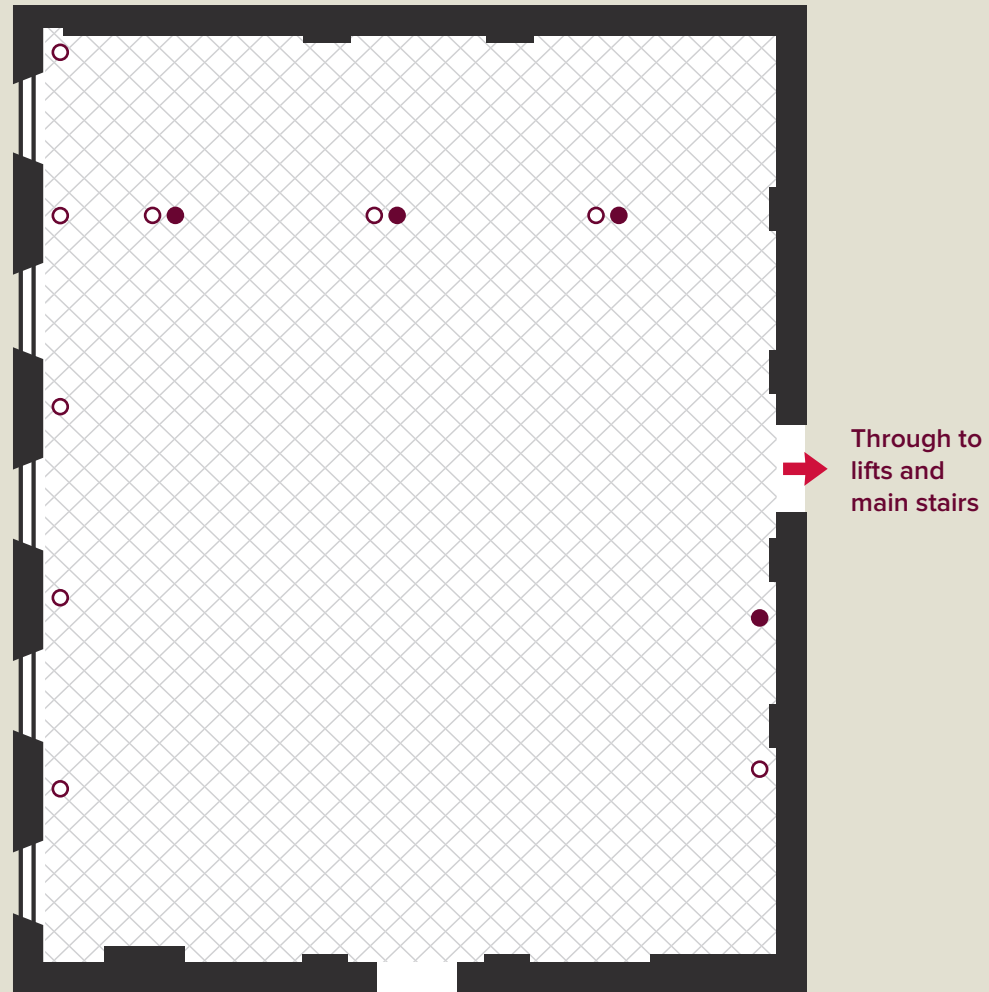
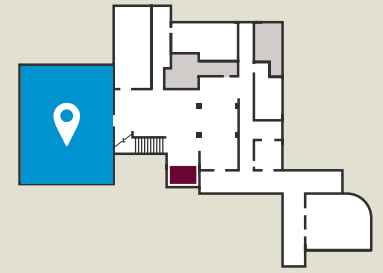
SIZE SPECIFICATIONS	LENGTH (M)	WIDTH (M)	AREA (M <sup>2</sup> )
Brian Mercer Room	9	7	63

KEY
○ Plug socket
● Internet portal

CONTACT INFO
<b>T:</b> +44 20 7451 2612
<b>E:</b> <a href="mailto:venuehire@royalsociety.org">venuehire@royalsociety.org</a>
<a href="https://royalsociety.org/venue-hire">royalsociety.org/venue-hire</a>

# Dining room

## Basement



Through to lifts and main stairs

SIZE SPECIFICATIONS	LENGTH (M)	WIDTH (M)	AREA (M <sup>2</sup> )
Dining room	15	12	180

### KEY

- Plug socket
- Internet portal

### CONTACT INFO

T: +44 20 7451 2612  
E: [venuehire@royalsociety.org](mailto:venuehire@royalsociety.org)  
[royalsociety.org/venue-hire](https://royalsociety.org/venue-hire)