



Radisson **BLU**
EDWARDIAN, GRAFTON



radissonblu-edwardian.com/meeting

RADISSON BLU EDWARDIAN, GRAFTON

There's a pleasing buzz to this hotel that reflects the energy of its location, equally good for the City, the West End or even Paris via nearby St Pancras station. 11 meeting spaces are as versatile as they are comfortable, and the conviviality of the Steak & Lobster restaurant and bar makes it perfect for lunchtime or evening entertaining.

RADISSON REWARDS

Each time you book a meeting or event at the Radisson Blu Edwardian, Grafton Hotel you can earn points with the Radisson Rewards planners programme. Sign up now at radissonrewards.com/planners and you can start earning points for Award Nights, upgrades and much more.

Visit radissonrewards.com/planners

MEETINGS AND EVENTS SHOULD ALWAYS BE THIS EASY

Complimentary WiFi available throughout the hotel on unlimited devices up to 150Mbps

Flexible spaces

Dedicated consultants

Food that's fast, fresh and healthy

Sensible pricing without the hidden extras

All-inclusive small meeting packages

Loyalty rewarded with Radisson Rewards

MEET WELL

Meeting well means treating well the things that really matter. More than just reducing your meeting's environmental impact, it's also a commitment to positively affecting the communities we are a part of. Our approach to responsible business means a clearer conscience for you – whatever the size and style of your event.

Visit radissonblu-edwardian.com/meetwell

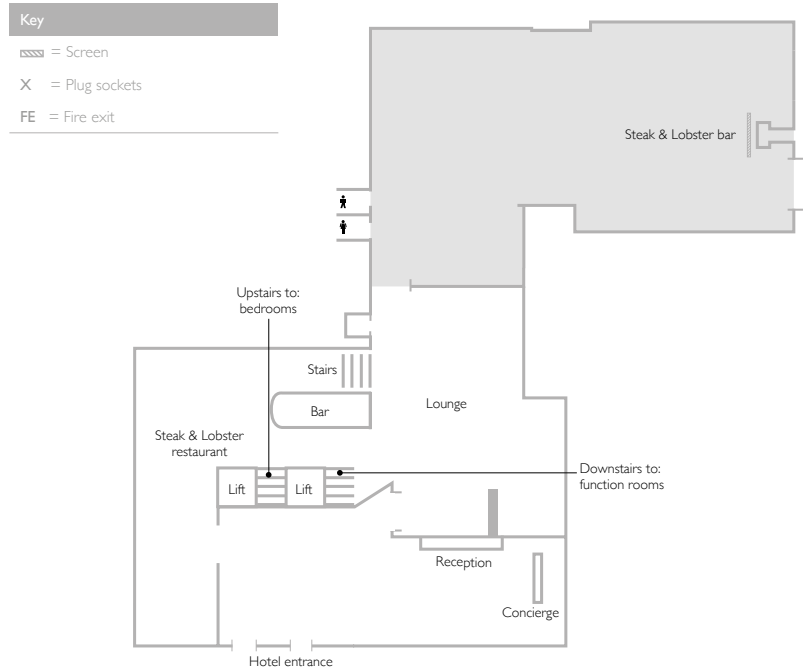
(((FREE INTERNET)))

Ground Floor

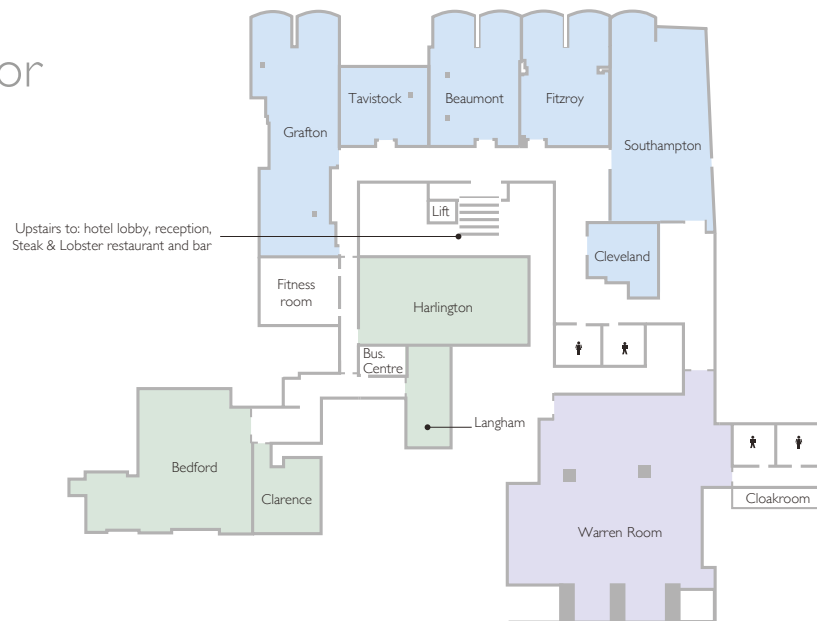
All meeting rooms are fully air conditioned and benefit from:

- Complimentary wireless
- Broadband access
- Digital event signage incorporating client branding
- Dedicated audio-visual support
- Integrated AV control panel
- CD, DVD, VHS
- LCD* projector and screen or plasma
- MP3 and PC connectivity

* All LCDs are built into ceiling



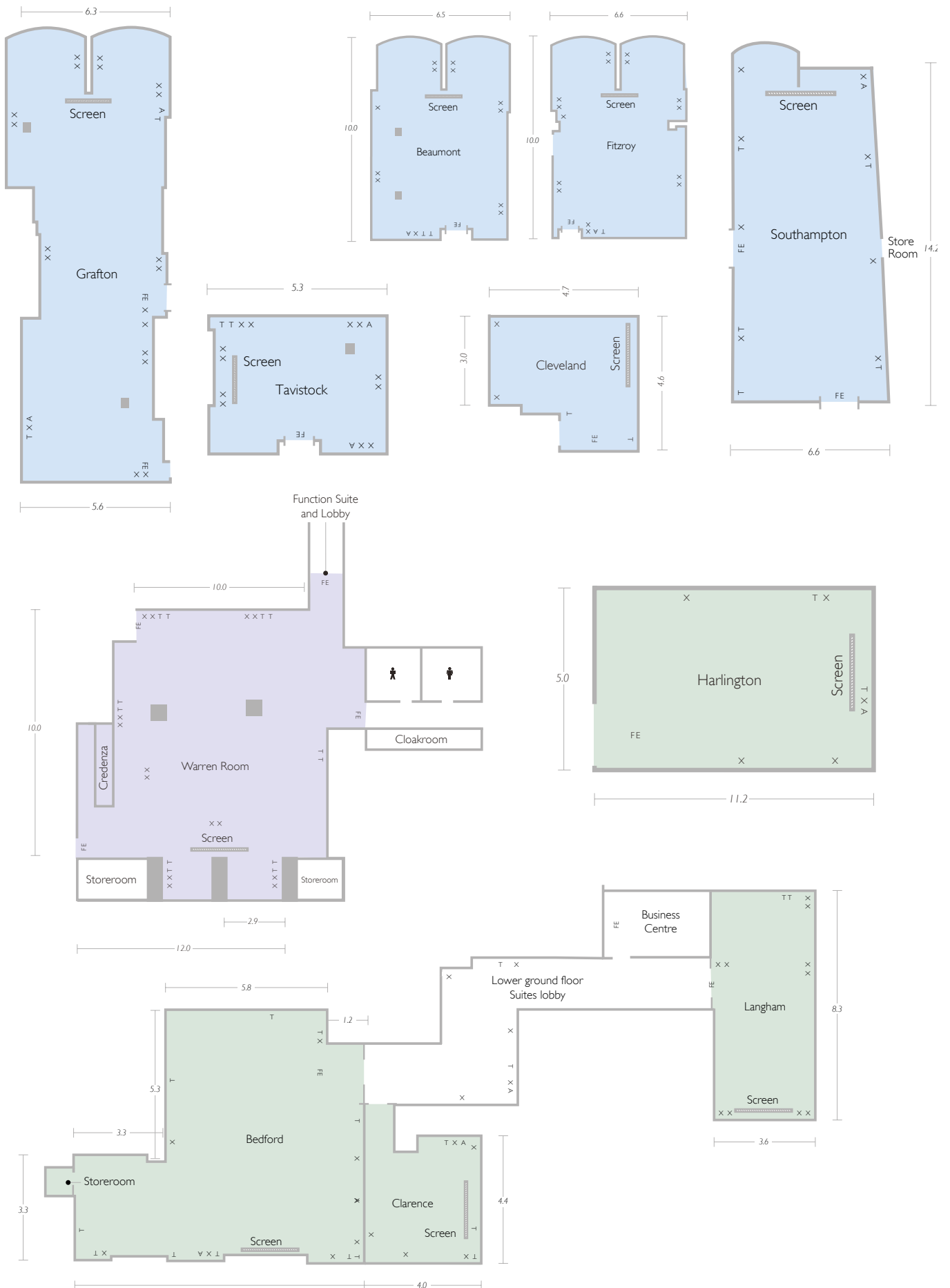
Lower Ground Floor



MEETING ROOM CAPACITIES

	Area	Dimensions m (ft)	Height m (ft)	Theatre	Class-room	Board-room	U-shape	Cabaret	Reception	Lunch /Dinner
Grafton	101.5m ² (1092.5ft ²)	17.5m x 5.8m (57.4ft x 19.1ft)	2.4m (7.8ft)	70	40	30	30	42	125	80
Southampton	108.5m ² (1168.3ft ²)	6.2m x 6.7m 53.1ft x 21.9ft)	2.2m (7.2ft)	70	40	30	30	42	125	80
Beaumont	65 m ² (699 ft ²)	10 x 6.5 m (32.8 x 21.3 ft)	2.4m (7.5ft)	30	18	16	16	20	50	30
Fitzroy	47.4m ² (510.2ft ²)	7.9m x 6m (25.9ft x 19.6ft)	2.4m (7.8ft)	30	18	16	16	20	50	30
Tavistock	22.3 m ² (240 ft ²)	5.3 x 4.2 m (17.3 x 13.7ft)	2.4m (7.5ft)	-	-	10	-	-	-	-
Cleveland	21.6m ² (232.7ft ²)	4.7m x 4.6m (15.4ft x 15.1ft)	2.5m (8.2ft)	-	-	10	-	-	-	-
Harlington	57.33m ² (617ft ²)	11.7m x 4.9m (38.4ft x 16ft)	2.2m (7.2ft)	60	24	24	25	24	60	40
Bedford	88.6 m ² (953 ft ²)	10.3 x 8.6 m (33.7 x 28.2 ft)	2.3 m (7.5 ft)	65	30	20	20	35	80	40
Clarence	17.16m ² (184.7ft ²)	4.4m x 3.9m (14.4ft x 12.7ft)	2.4m (7.8ft)	-	-	8	-	-	-	-
Langham	29.8m ² (321.6ft ²)	8.3m x 3.6m (27.2ft x 11.8ft)	2.4m (7.8ft)	-	-	12	-	-	-	-
Warren Room	158.75m ² (1708.7ft ²)	12.7m x 12.5m (41.6ft x 41ft)	2.3m (7.5ft)	110	50	30	30	64	150	100

Lower Ground Floor Detail





Cleveland Suite



Warren Suite



Warren Suite



RADISSON BLU EDWARDIAN, GRAFTON ★★★★★

130 Tottenham Court Road, London, W1T 5AY
T: +44 (0)20 7666 5477 F: +44 (0)20 8750 9299
graftcb@radisson.com
radissonblu-edwardian.com/grafton

Owned and managed by Edwardian Hotels London