



the last
DROP

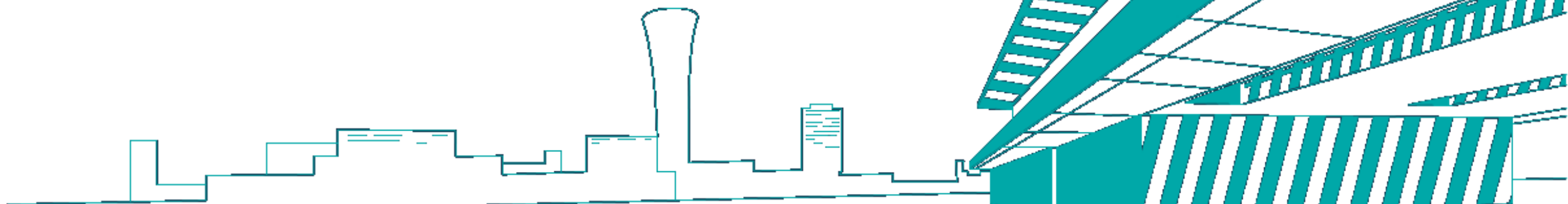
The Last Drop is a hidden gem at the heart of the iconic Queen Elizabeth Olympic Park. The Terrace at The Last Drop is set against the spectacular backdrop of the 2012 venues.

The light and airy events space and outside terrace overlooks the Stadium and the spectacular London Aquatics Centre. The Hospitality Suite and Terrace provides the ideal blank canvas for and can be configured to several different layouts. Its window blinds mean it's perfectly designed for delivering:

Conferences
Private Parties
Fine Dining
VIP Event Hospitality
Ceremonies and Receptions

Press Launches
Training
Corporate Events and Away Days
Wedding and Civil Partnership

The Meeting Room & Hospitality Suite is available to hire daily from 07.30 to 23.00 however we are very flexible and can operate outside of these times, subject to additional staffing charges.



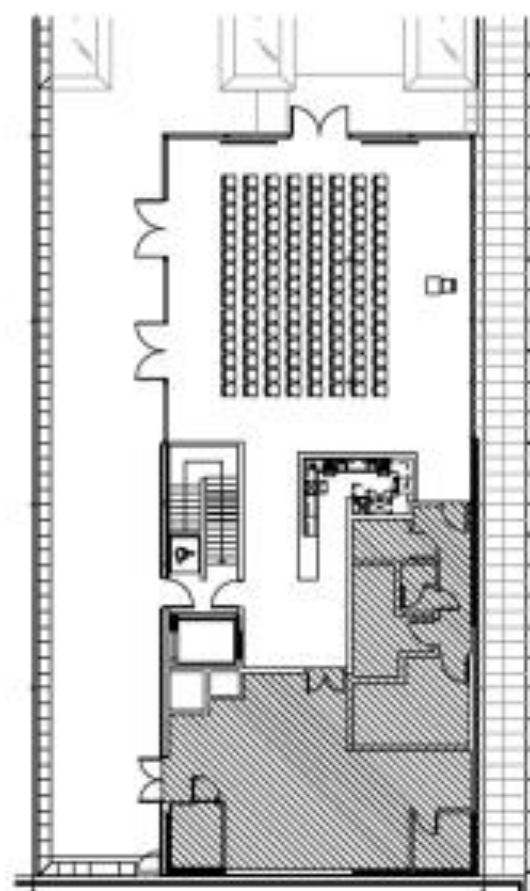
CAPACITY & LAYOUT

The Hospitality Suite can be set up in various layouts from:

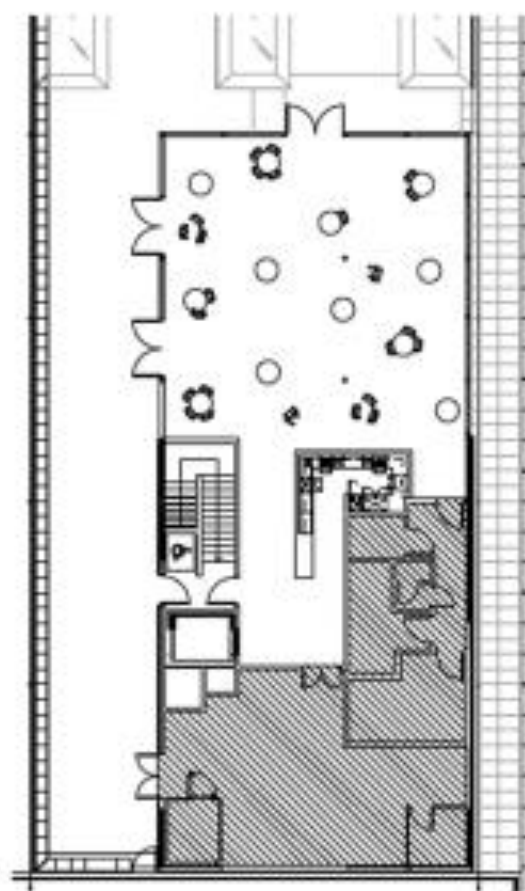
Theatre Style 120
Standing Reception 220

Standing Buffet 180
Boardroom 32

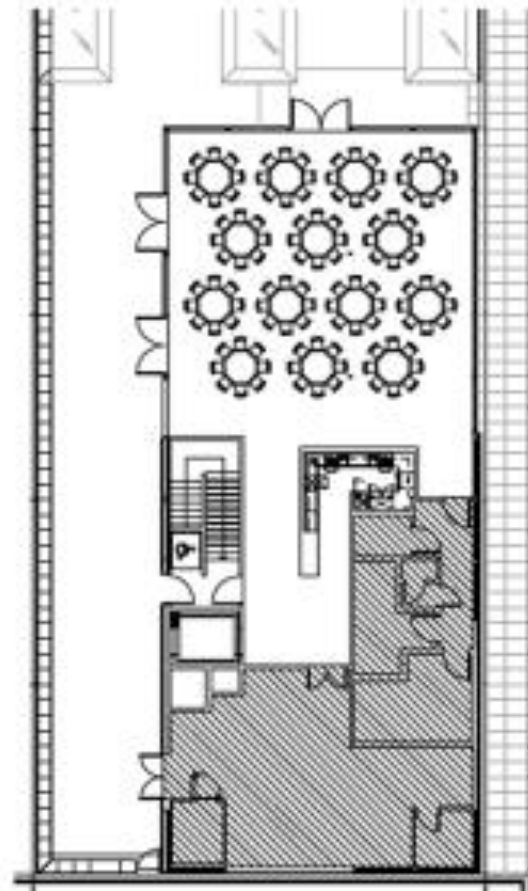
Seated Dining 104
Cabaret 60



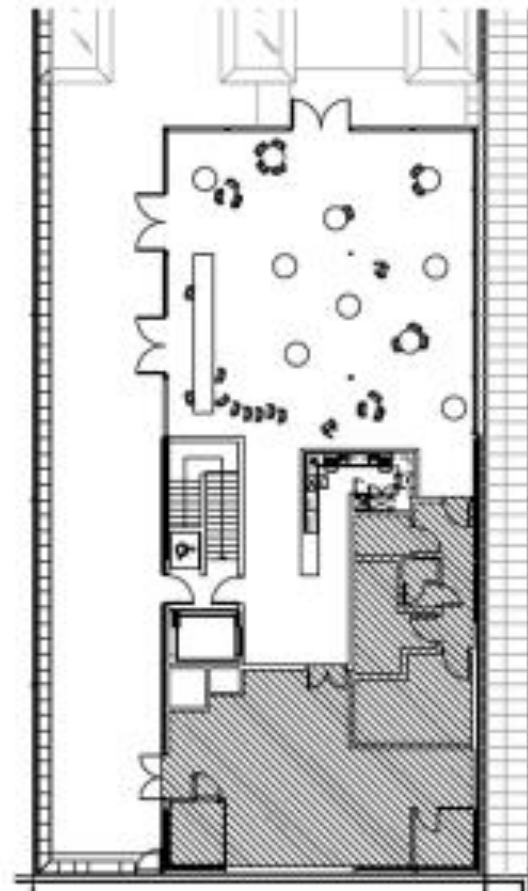
THEATRE STYLE



STANDING RECEPTION



SEATED DINING



STANDING BUFFET



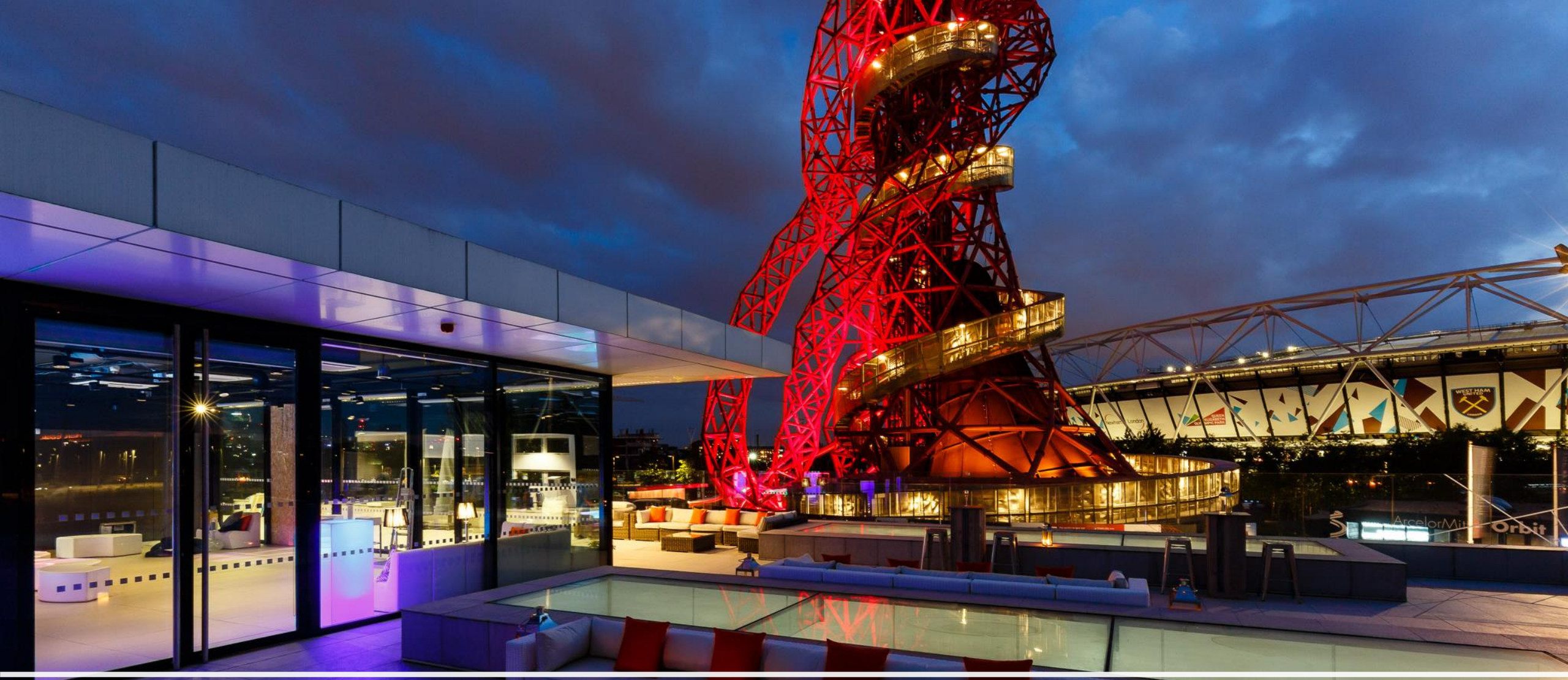
Conferences



Fine Dining



Private Parties



VIP Events





Meetings

For further information or to hire,
contact us on:

T: 020 8221 9113

E: info@thelastdrop.london

Keep updated!



[@thelastdropldn](https://www.instagram.com/thelastdropldn)

www.thelastdrop.london

