



IVEAGH

GARDEN HOTEL









## An urban oasis

A modern take on traditional luxury, the four-star Iveagh Garden Hotel is an urban oasis just steps from Grafton Street. Retreat to one of our 145 luxurious rooms, unwind with a stroll through the Iveagh Gardens, enjoy delicious casual dining, craft cocktails and the freshest local ingredients in Elle's bar and bistro.

- Europe's first sustainable hotel
- 145 rooms and suites
- Elle's Bar & Bistro
- LUAS Light rail station
- Concierge service
- Conference space for up to 270 delegates
- Banqueting space for up to 100 guests
- Terrace overlooking the Iveagh Gardens
- Classic design with contemporary finish
- Health & fitness club access
- Award winning chefs







## Elle's Bar & Bistro

### **Fresh ingredients & local produce.**

Elle's kitchen utilises the freshest local ingredients, blending a traditional bistro menu with seasonal Irish produce. The library is a cosy space, perfect for a cocktail or a quick bite, while the main room is perfect for more formal dining.

### **Craft Beers & Classic Cocktails**

From fine wines and classic cocktails to craft beers. Our cocktail menu uses only premium spirits, fresh juices and all our syrups are made in house by our highly skilled mixologists.











## Deluxe Rooms

Our Deluxe Rooms, located on floors 1-5, feature a luxurious topped mattress, down comforter & pillows, a 40" Samsung flat-screen television with luxury amenities and laptop safe. With stylish furnishings and luxurious marble bathrooms with rainfall showers, our rooms provide a serene escape with the familiarity of home.

- ROOM SIZE: APPROX 28-30 SQM
- COMPLIMENTARY WI-FI (ROOM & COMMON AREAS)
- TEA & COFFEE FACILITIES
- AROMATHERAPY ASSOCIATES BATHROOM AMENITIES
- LUXURIOUS BED LINENS
- DEDICATED WORK AREA
- STILL & SPARKLING WATER
- LAPTOP SAFE
- USB CHARGING STATIONS



## City Pods

Our City Pods are small and funky rooms with a comfortable bed to enjoy Netflix when escaping the hustle and bustle of Dublin City Centre. These queen-bedded rooms are well outfitted for the modern traveler. The flexible design includes thoughtful tech like free WiFi and bedside USB charging stations. Pegboard closets, flip-down desks, 40-inch LED TVs and glass-enclosed rain showers help you make yourself at home when you're not out exploring.

- ROOM SIZE: 10 SQM
- COMPLIMENTARY WI-FI (ROOM & COMMON AREAS)
- 40" FLAT SCREEN TV
- AROMATHERAPY ASSOCIATES BATHROOM AMENITIES
- STILL AND SPARKLING WATER
- USB CHARGING STATIONS







## Superior Rooms

Light-filled and airy, 28-30 sq m Superior Rooms feature stylish furnishings and luxurious marble bathrooms with rainfall showers. Comfortable and peaceful, they provide the perfect retreat from the hustle and bustle of Dublin's city centre.

- ROOM SIZE: APPROX 28-30 SQM
- COMPLIMENTARY WI-FI (ROOM & COMMON AREAS)
- 40" FLAT SCREEN TV
- AROMATHERAPY ASSOCIATES BATHROOM AMENITIES
- DEDICATED WORK AREA
- LAPTOP SAFE
- BATHROBE SLIPPERS
- STILL & SPARKLING WATER
- USB CHARGING STATIONS
- BARRY'S TEA WITH BISCUITS







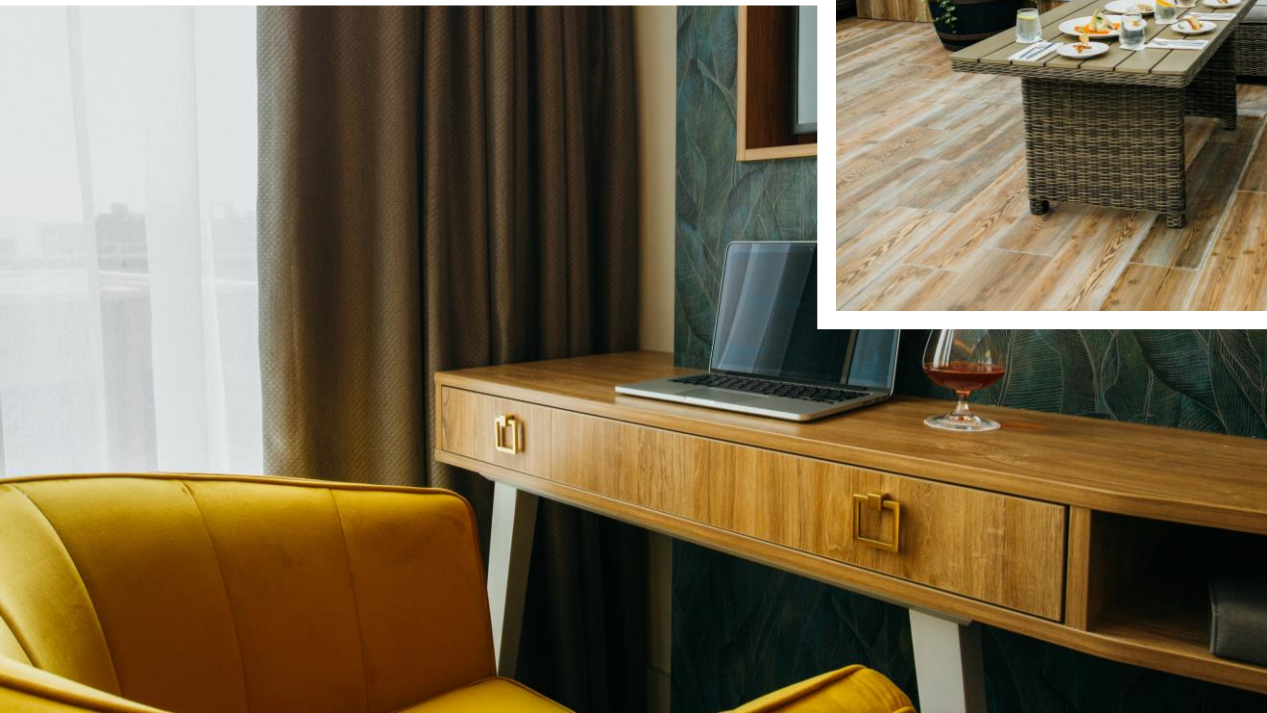
## Presidential Suite

Our majestic Presidential Suite overlooking the Iveagh Gardens, is the perfect combination of luxury and style. Boasting a floor space of 60 sq. mts. this exceptional Dublin hotel suite features; master bedroom, lounge and a private balcony overlooking the park.

- ROOM SIZE: 60 SQM WITH BALCONY
- SEPARATE LIVING SPACE
- COMPLIMENTARY WI-FI (ROOM & COMMON AREAS)
- NESPRESSO COFFEE MACHINE
- 40" FLAT SCREEN TV
- AROMATHERAPY ASSOCIATES BATHROOM AMENITIES
- USB CHARGING STATIONS
- DEDICATED WORK AREA
- BATHROBE SLIPPERS
- MINI BAR











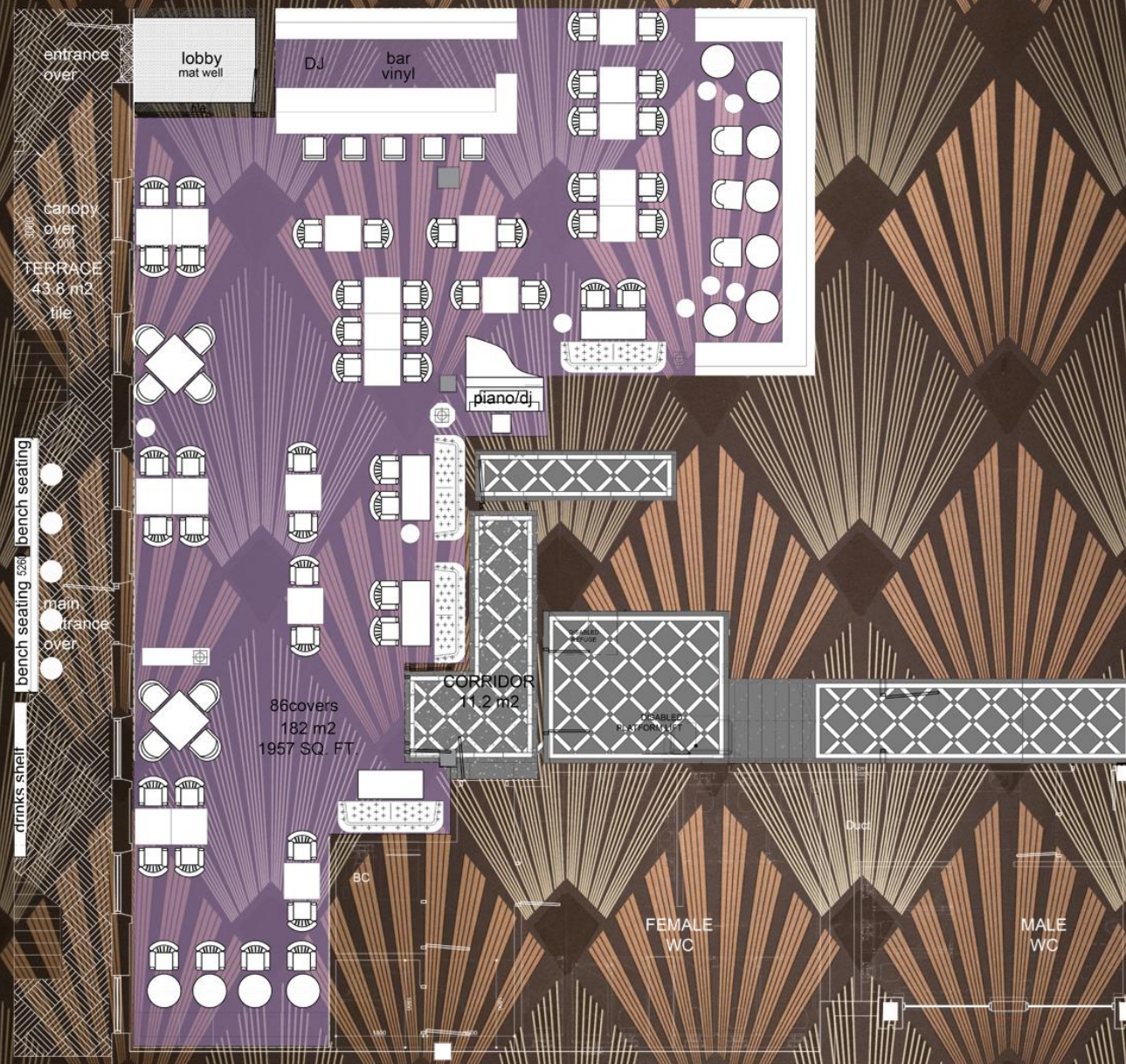
## Conference & Events

Downstairs at The Iveagh is an elegant, discrete and versatile location. The perfect space for private events, product launches or informal corporate gatherings. The room can be arranged for both conference theatre style events for 100 people or drinks receptions with up to 250.

Elle's suite can cater private dining, welcome receptions or theatre style meetings. The space can comfortably accommodate 40 people sitting or 100 standing. Contact us for sample menus and reservations.







  
**IVEAGH**  
 GARDEN HOTEL

## The Iveagh Suite

**Suite Capacities:**  
 Drinks Reception: 220  
 Banquet: 100  
 Wedding: 80  
 Dinner Dance: 80  
 Theatre Style: 100  
 Classroom Style: 60  
 Cabaret Style: 60  
 Boardroom: 30  
 U-Shape 35

**Suite Facilities:**  
 Private Entrance  
 Private Terrace  
 Audio with Roaming  
 & Lapelle Mic  
 2 x 50" Plasma Screen TVs  
 Private Bar  
 Screen  
 Projector







## Europe's First Sustainable Hotel

- Existing plumbing and heating systems that ran on fossil fuel were removed to make way for a revolutionary system which uses natural energy harvested on site.
- An underground river that flows fifty meters below the hotel acts as an energy reserve for cooling + heating hotel without burning fuel.
- Our natural energy plant room uses electricity produced on site in a gas turbine that eliminates electrical energy loss from grid power.
- The onsite gas turbine also produces hot water for hotel use which is stored on each floor close to en-suites and bathrooms.
- Waste water operates gravity with no pumping energy required
- Harmful pollution is eliminated and heating/cooling systems swap energy between areas that required higher or lower temperatures.
- LED low power lighting is in use throughout the hotel inside and outside, there are no standard bulbs to waste power, and smart control prevents lighting unoccupied areas.
- Traditional power lifts removed are replaced by smart low energy lift systems to carry you to each floor.
- Catering kitchens provide energy to the building in our instant energy exchange system, traditionally blown away to outside







**IVEAGH**

GARDEN HOTEL

72/74 Harcourt Street, Dublin 2

Tel: +353 (0)1 568 5500

[www.iveaghgardenhotel.com](http://www.iveaghgardenhotel.com)

Tristan Jacob – Director of Sales

Tel: +353 (0) 87 741 2425

Email: [tristanj@igh.ie](mailto:tristanj@igh.ie)