

WORLD FASHION CENTRE

AMSTERDAM



WFC BEURSPLAZA
EXHIBITION AND EVENT VENUE

WFC BEURSPLAZA

A UNIQUE AND DYNAMIC EVENT VENUE

For more than 40 years the World Fashion Centre has been the heart of dutch fashion, located in the lively capitol of the Netherlands. Apart from the more than 900 labels that are represented here, WFC also organises exhibitions, fashion shows and lifestyle events.

This flexible area is literally in the epicentre of fashion. A place that is constantly moving and is a melting pot for new developments, new trends and upcoming designers. In short it's an event venue with creativity and an international flair.

WFC Beursplaza can be used in many ways because the total floor area is divided into three separate halls. Events that we have organised before are: (fashion) fairs, exhibitions, fashion shows, corporate events, conferences, galas,

conventions and product launches. Of course WFC also has the capability of providing smaller areas for meetings and presentations.

Because of the international brand awareness and our experience, companies from varying fields choose to work with WFC, from small presentations up to multiday events. WFC offers to take work off your hands and to add our ideas to the creative process to make your event a success.



SERVICE

LOCATION

WFC Beursplaza is an event venue with a total floor area of 3500 square meters. The exhibition hall can be divided into two separate areas measuring 1500 square meters each (it is also possible to create smaller areas) and a central hall which measures 500 square meters. Smaller areas suitable for meetings etc. can be rented from 60 square meters.

FLEXIBILITY

It is your decision which of the three halls you would like to rent, so that you can create the perfect atmosphere or setting for your event. If even our 3500 square meters prove to be inadequate it is also possible use other areas in the WFC complex.

FACILITIES

It is possible to rent just our halls and the following things we can also facilitate for you: lighting, sound, catwalks, stages, exhibition stands, decoration, security, cleaning, catering, project management and wireless internet. Apart from this WFC also has a large network of other suppliers.

ACCESSIBILITY

WFC is very well located on the beltway of Amsterdam (A10) and is therefore easily accessible by car. It has it's own carpark with more than 900 lots. Also for public transport, the Lelylaan station is just 400 meters away, the metro stations Heemstedestraat and Lelylaan on the circular line 50 are located within 5 minutes walking distance. The connection to the Amsterdam city centre is excellent: Trams 1, 2 and 17 are just a few minutes away on foot. Schiphol Airport is 15 minutes away either by car or train.

ELECTRICITY

- The East and the West hall both have 3 power outlets of 32 amps each.
 - The Central hall has 2 power outlets with 32 amps each.
 - There is also a 125 amp outlet available.
- WFC can provide a detailed electricity plan.

DIMENSIONS

- East hall 1500 square meters: 57,9 m x 26,2 m.
The highest point is 4,97 m.
- West hall 1500 square meters: 57,9 m x 26,2 m.
The highest point is 5,10 m.
- Centre hall 500 square meters: 45,0 m x 14,2 m.
The highest point is 5,10 m.

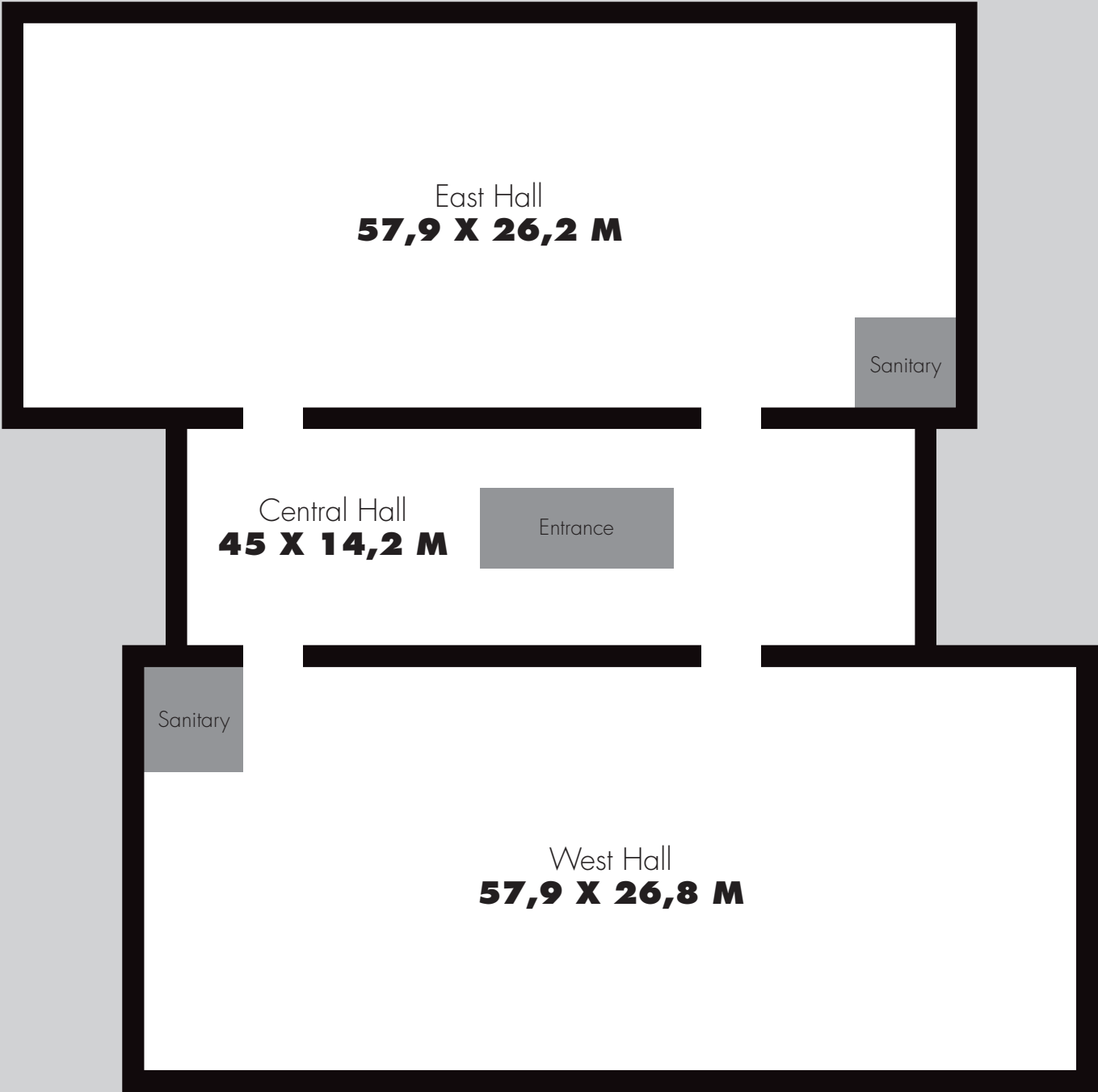
If desired WFC can supply a detailed map with height differences and a scaled drawing for the layout for your event.

LOADING AND UNLOADING

Regular cars and small vans can use the car park entrance to drive straight into our halls. Trucks are able to load and unload on the Terheideweg and then use the lift to access the halls. If you have any questions or would like more information concerning loading and unloading the WFC management will be pleased to help you.

**WORLD
FASHION
CENTRE**
AMSTERDAM

MAP





WORLD FASHION CENTRE AMSTERDAM

Correspondence address:

P.O. Box 69000

1060 CC Amsterdam

The Netherlands

T +31 (0)20 511 0173

F +31 (0)20 511 0180

Visiting address:

Koningin Wilhelminaplein 13

1062 HH Amsterdam

The Netherlands

events@worldfashioncentre.nl

www.worldfashioncentre.com

